

REQ. PER UNIT	USED ON			JJ-300
	MODEL	ASS'Y. NO.	DATE	
	JPP-AX5500B8		9-26-63	

SPECIFICATIONS:

Series - HN
 No. of Contacts - ONE (1)
 Type of Contact - FEMALE
 Dielectric - TEFLON

ELECTRICAL DATA:

Max. Peak Opr. Volt - 1500 V
 Freq. Limit - 10,000 MCS
 Nominal Impedance - 50 OHMS

CABLE ACCOMMODATIONS:

Type - FOAMFLEX HELIAX 1/2"

MATING ACCOMMODATIONS:

Type - HN

MATERIAL:

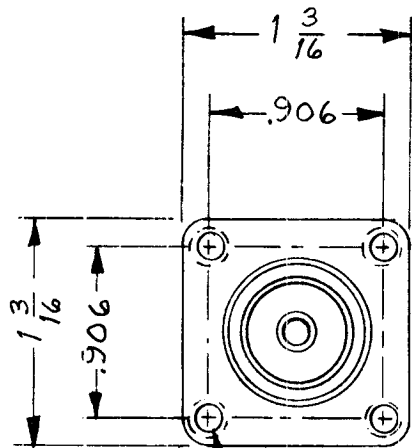
External Parts - COPPER
 Contact - COPPER
 Gasket - SILICONE

FINISH:

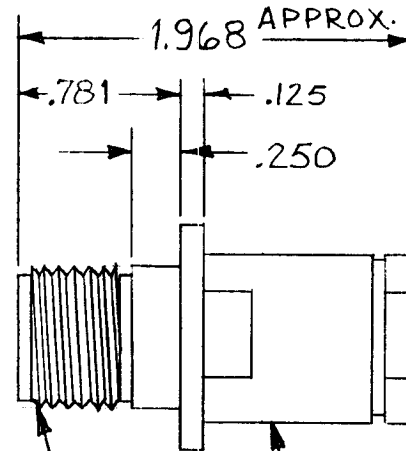
External Parts - COPPER.
 Contact - COPPER

PANEL:

Max. Thickness 3/16



DRILL & TAP FOR 6-32 (4 REQ.)



STAMP TM PART No. JJ-300

3/4 - 20 THD

REQ.	ITEM	PART NO.	MARTINENGO	DESCRIPTION	SYMBOL							
				THE TECHNICAL MATERIEL CORP. MAMARONECK, NEW YORK								
				RECEPTACLE PANEL MOUNT								
				HN TO 1/2" FOAM HELIAX								
SYM	DESCRIPTION	DATE	CH. NO.	DRAFTS	CHECKER	ENG. APP.	MATERIAL					
UNLESS OTHERWISE SPECIFIED DIMENSIONS ARE IN INCHES AND INCLUDE CHEMICALLY APPLIED OR PLATED FINISHES		SCALE						M.TANTILLO	9-26-63			
DECIMALS .X ± .05 .XX ± .01 .XXX ± .005		FRACTIONS ± 1/64 ANGLES ± 0° 30'		TOLERANCES		CODE		TYPE & TEMPER	HEAT TREAT. SPEC.	DRAWN	CHECKED	FINAL APPROVAL
												JJ-300
								FINISH & SPEC. NO.	ELEC. DES. APP.	MECH. DES. APP.		

REQ. PER UNIT	USED ON			JJ-306
	MODEL	ASS'Y. NO.	DATE	
			12-27-63	

SPECIFICATIONS:
 SERIES - QDS
 NO. OF CONTACTS - 1
 TYPE OF CONTACT - FEMALE
 DIELECTRIC - TEFLON

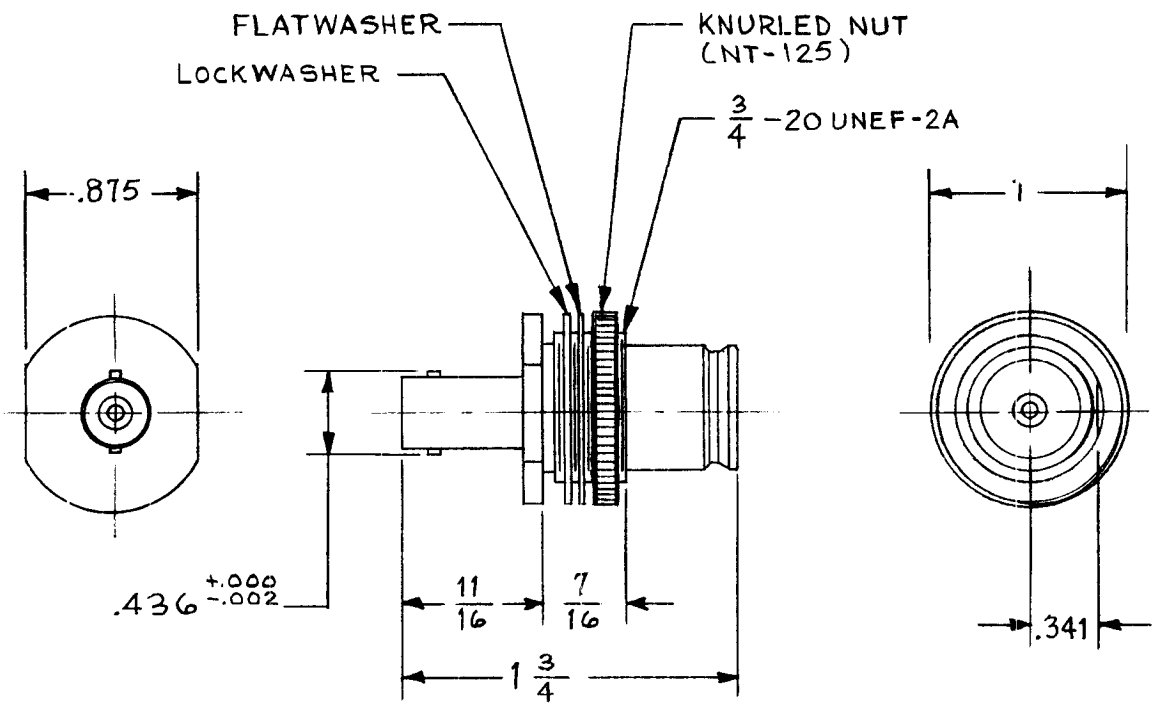
ELECTRICAL DATA:
 MAX. PEAK OPR. VOLT - 500 V
 FREQ. LIMIT - 10,000 MC
 NOMINAL IMPEDANCE - 50 OHMS

MATING ACCOMMODATIONS:
 TYPE - QDS(F) TO BNC(F)

MATERIAL:
 EXTERNAL PARTS - BRASS
 CONTACT - BERYLLIUM COPPER

FINISH:
 EXTERNAL PARTS - SILVER PLATE
 RHODIUM FLASH
 CONTACT - SILVER PLATE
 GOLD FLASH

PANEL:
 MAX. THICKNESS - 3/16



SYM	DESCRIPTION	DATE	CH. NO.	DRAFTS	CHECKER	ENG. APP.	REQ. ITEM	PART NO.	MATERIAL	MAERTINENGO	DESCRIPTION	SYMBOL
											THE TECHNICAL MATERIEL CORP. MAMARONECK, NEW YORK	
											ADAPTER, CONNECTOR, RECEPTACLE	
											QDS TO BNC	
										M. TANTILLO 12-27-63	12/27/63	BP
										CHECKED		
										FINAL APPROVAL		
										SEE NOTE		JJ-306
										FINISH & SPEC. NO.		
										ELEC. DES. APP.		
										MECH. DES. APP.		

UNLESS OTHERWISE SPECIFIED
 DIMENSIONS ARE IN INCHES AND INCLUDE
 CHEMICALLY APPLIED OR PLATED FINISHES

SCALE
 FULL SCALE

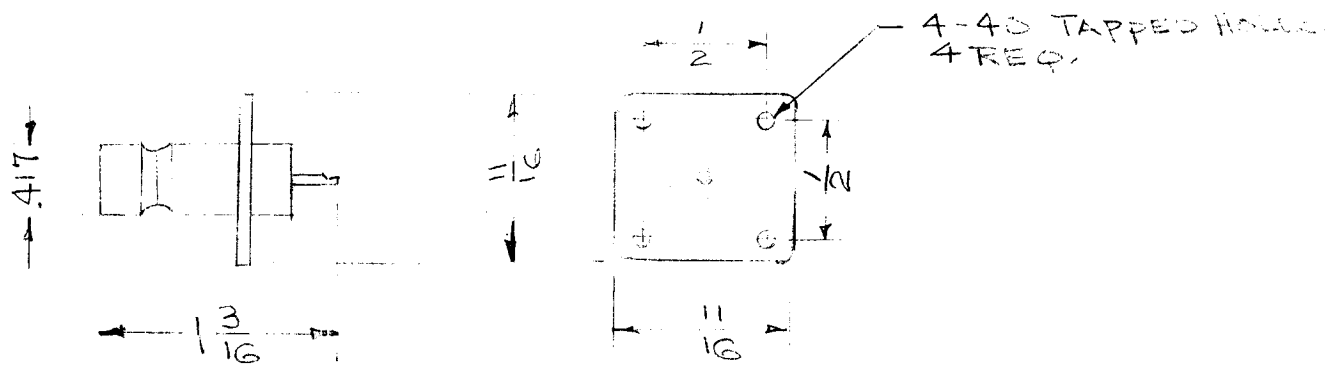
DECIMALS
 .X ± .05
 .XX ± .01
 .XXX ± .005

FRACTIONS
 ± 1/64
 ANGLES
 ± 0° 30'

TOLERANCES

CODE
 S401-70(2970)

REQ. PER UNIT	USED ON			JJ 30	Ø
	MODEL	ASS'Y. NO.	DATE		
			1-28-63		



REF: TRD CONNECTOR PROD.

REQ.	ITEM	PART NO.	DESCRIPTION				SYMBOL
			THE TECHNICAL MATERIEL CORP. MAMARONECK. NEW YORK				
			QDM TO SOLDER CUP PANEL MOUNT				
ISSUE	ITEM	CHANGED FROM	DATE	CH. NO.	DRAFTS	CHECKER	ENG. APP.
TOLERANCES			SCALE: 5/16"				
DEC. DIM. ± FRAC. DIM. ± ANGULAR DIM. ±			MAXIMUM ALLOWABLE TOLERANCES HAVE BEEN DETERMINED AND ANY DEVIATIONS WILL BE CAUSE FOR REJECTION. REMOVE ALL BURRS AND SHARP EDGES				
TYPE & TEMPER		HEAT TREAT. SPEC.		DRAWN		CHECKED	
FINISH & SPEC. NO.		ELEC. DES. APP.		MECH. DES. APP.		JJ 30	

TMC PART NUMBER	MFGR. PART NUMBER	REQ. PER UNIT	MODEL	USED ON ASSY. NO.	DATE	JJ 315 - ∅
JJ315-1	13A		STR SMR		9-24-64	

SPECIFICATIONS

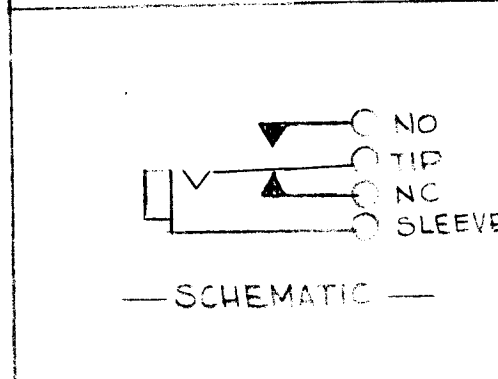
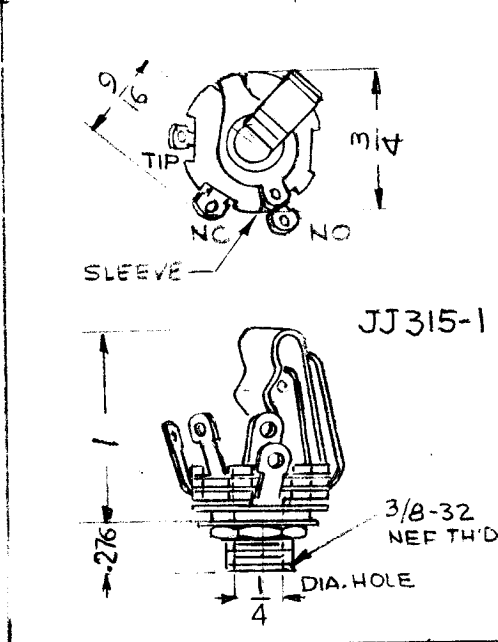
MOUNTING BUSHING: BRASS, NICKEL PLATED. MOUNTS IN SINGLE 3/8" DIAMETER HOLE.

INSULATION: TYPE XXP PAPER BASE PHENOLIC. TYPE XXXP PAPER BASE PHENOLIC SPACERS (TYPE PBE-P, PER MIL-P-3115A) IN MIL TYPES.

SPRINGS; SPECIAL ALLOY OF SPRING TEMPERED NICKEL SILVER.

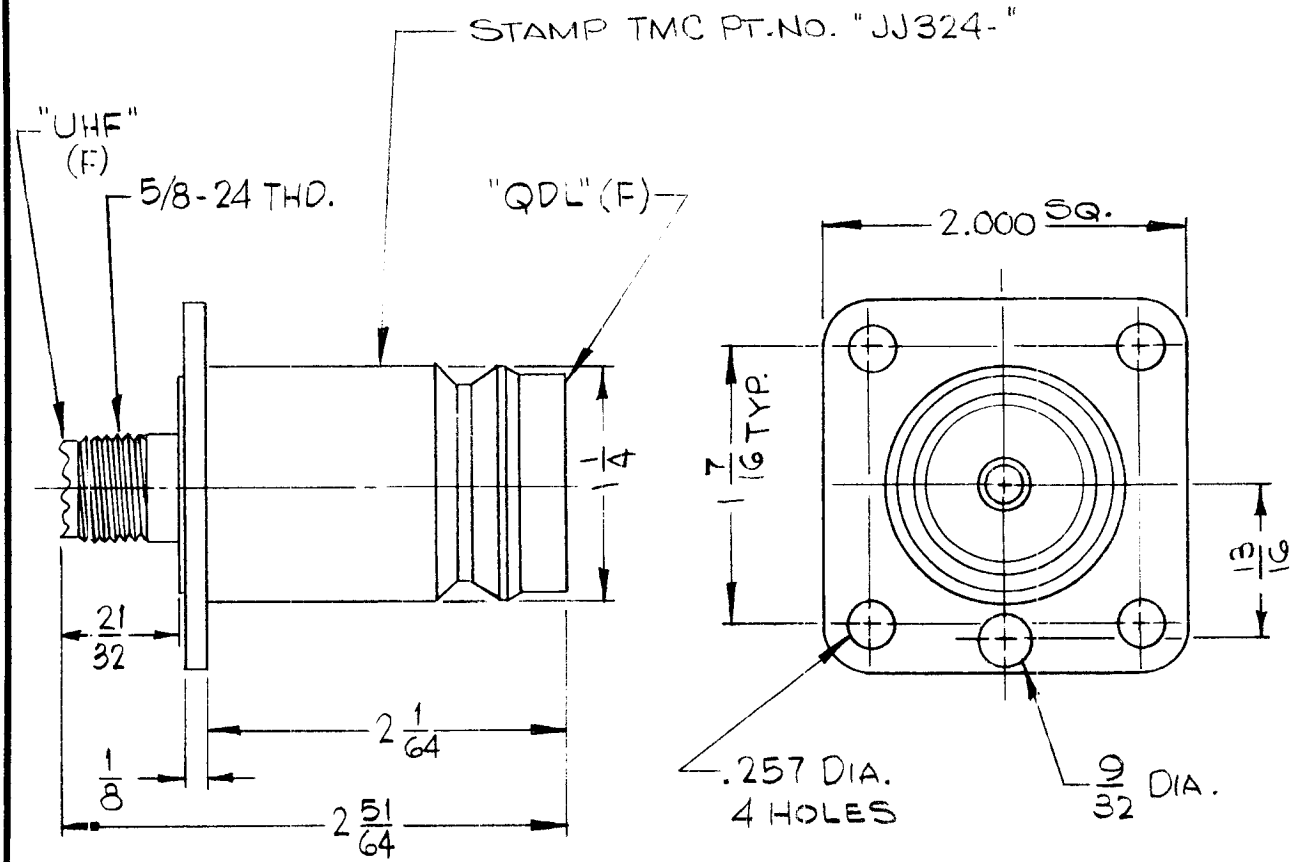
SLEEVE TERMINAL: BRASS PLATED, HOT TINNED.

HARDWARE; SUPPLIED WITH ONE BRASS NICKEL PLATED LOCKNUT AND ONE STEEL NICKEL PLATED WASHER.



REQ.	ITEM	PART NO.	AALTONEN	DESCRIPTION	SYMBOL		
∅	NORMAL RELEASE FOR PRODUCTION	9-28-64	⊙	THE TECHNICAL MATERIEL CORP. MAMARONECK, NEW YORK			
X	EXP. RELEASE	9-24-64	G.D.L.	JACK, PHONE			
SYM	DESCRIPTION	DATE	CH. NO.	DRAFTS	CHECKER	ENG. APP.	
UNLESS OTHERWISE SPECIFIED DIMENSIONS ARE IN INCHES AND INCLUDE CHEMICALLY APPLIED OR PLATED FINISHES		SCALE	DO NOT SCALE				
DECIMALS X ± .05 .XX ± .01 .XXX ± .005	TOLERANCES	FRACTIONS ± 1/64 ANGLES ± 0° 30'	CODE C	5401-154			
			TYPE & TEMPER	HEAT TREAT. SPEC.	DRAWN	CHECKED	FINAL APPROVAL
					G.D.L. 9/28/64	⊙ 9-28-64	RAC
					JAC	JC 9/28/64	JJ315-∅
			FINISH & SPEC. NO.	ELEC. DES. APP.	MECH. DES. APP.		

REQ. PER UNIT	USED ON			JJ324	Ø
	MODEL	ASS'Y. NO.	DATE		



SPECIFICATIONS

SERIES: QDL TO UHF
 NO. OF CONTACTS: ONE (1)
 TYPE OF CONTACT: FEMALE
 DIELECTRIC: TEFLON

ELECTRICAL DATA:
 MAX. PEAK VOLTAGE: 500
 FREQ. LIMIT: 200-500 MHz
 NOMINAL IMPEDANCE: 50 OHMS

MATERIAL:
 EXTERNAL PARTS: BRASS
 CONTACT: BERYLLIUM COPPER

FINISH:
 EXTERNAL PARTS: SILVER PLATE & RHODIUM FLASH
 CONTACT: SILVER PLATE & GOLD FLASH
 CABLE ACCOMODATIONS: NONE
 MATING CONNECTOR: PL 136, P 259

							REQ. ITEM	PART NO.	MARTINENGO DESCRIPTION	SYMBOL			
ORIGINAL RELEASE									THE TECHNICAL MATERIEL CORP. MAMARONECK. NEW YORK				
X2 MATING CONN. ADDED							9-20-67	ENJ	ADAPTER				
X1 PT/NOs REVISED ELEC. SPECS REVISED							2.20.67	UHL	QDL (F) TO UHF (F)				
SYM	DESCRIPTION	DATE	CH. NO.	DRAFTS	CHECKER	ENG. APP.	MATERIAL						
UNLESS OTHERWISE SPECIFIED DIMENSIONS ARE IN INCHES AND INCLUDE CHEMICALLY APPLIED OR PLATED FINISHES							SCALE		3 22-66 H. Austin				
							TYPE & TEMPER		HEAT TREAT. SPEC.	DRAWN	CHECKED	FINAL APPROVAL	
DECIMALS .X ± .05 .XX ± .01 .XXX ± .005							TOLERANCES						
FRACTIONS ± 1/64 ANGLES ± 0° 30'							CODE	S401-70(2984)					
							SEE SPECS.		FINISH & SPEC. NO.				
							ELEC. DES. APP.		MECH. DES. APP.		JJ324	Ø	

REQ. PER UNIT	USED ON			JJ 330	Ø
	MODEL	ASS'Y. NO.	DATE		
	JDP-7B4X11		1/24/66		

SPECIFICATIONS

SERIES - UHF (F) TO BNC (F)
 NO. OF CONTACTS - ONE EACH END
 TYPE OF CONTACT - FEMALE
 DIELECTRIC - TEFLON

ELECTRICAL DATA

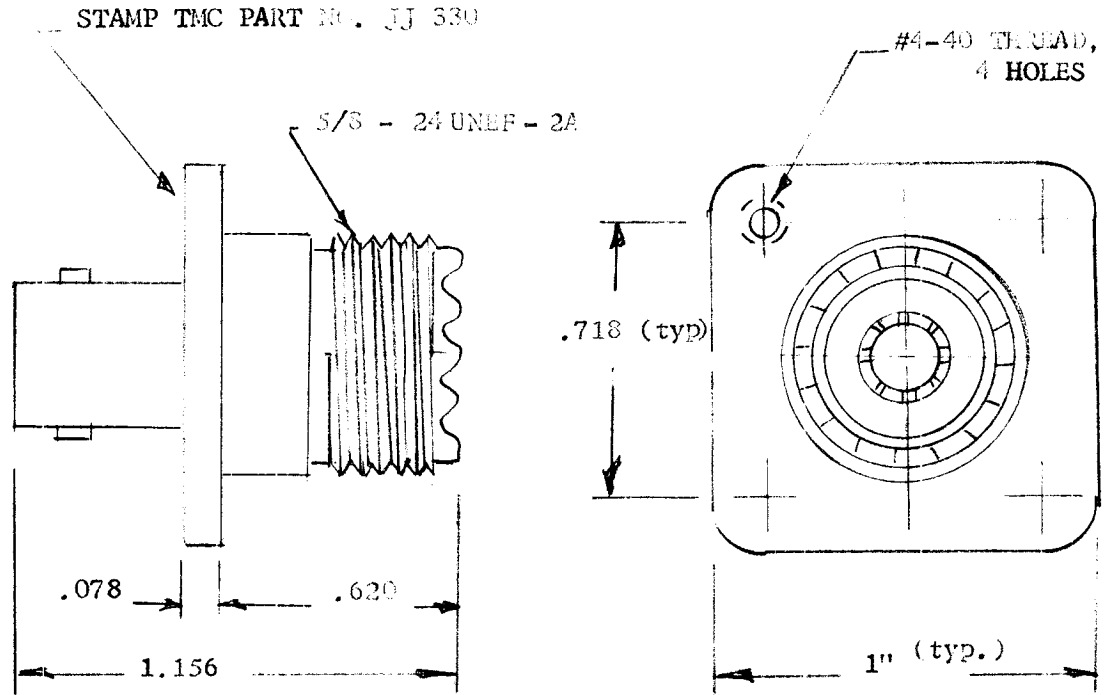
MAX. PEAK VOLT. - 500 VOLTS
 NOM. IMPEDANCE - 50 OHMS

MATERIALS

EXTERNAL PARTS - BRASS
 CONTACT - BERYLLIUM COPPER
 DIELECTRIC - TEFLON

FINISHES

EXTERNAL PART - SILVER PLATED & RHODIUM FLASHED
 CONTACT - SILVER PLATED & GOLD FLASHED



REQ.	ITEM	PART NO.	DESCRIPTION				SYMBOL
			THE TECHNICAL MATERIEL CORP. MAMARONECK. NEW YORK				
			CONNECTOR, ADAPTER, BNC TO UHF				
Ø	ORIGINAL RELEASE FOR PRODUCTION	1/25/66	HKA				
SYM	DESCRIPTION	DATE	CH. NO.	DRAFTS	CHECKER	ENG. APP.	
UNLESS OTHERWISE SPECIFIED DIMENSIONS ARE IN INCHES AND INCLUDE CHEMICALLY APPLIED OR PLATED FINISHES		SCALE	None				
DECIMALS .X ± .05 .XX ± .01 .XXX ± .005	TOLERANCES	FRACTIONS ± 1/64 ANGLES ± 0° 30'	CODE	S 401-70-3920			
FINISH & SPEC. NO.		ELEC. DES. APP.	MECH. DES. APP.		OCTAVIO		
		JJ 330				Ø	

1/29/66

APPLICATION			REVISIONS						
QTY	MODEL USED ON	ASSY NO.	LTR	DESCRIPTION	DATE	E.M.N.NO	DRAFT	CHKD	APPD
3	SBT-1KPA1		X	EXPERIMENTAL RELEASE	7-10-67				
			Z	ORIG RELEASE FOR PROD	4-6-67				
			A	CONN. WAS 250V	7-10-67	18388	LAK		JH EH

MFR PART NUMBER 2127GA

MECHANICAL: 2 31/32" LONG
MATING RACEWAY PO-160

INSULATION: PLASTIC, COLOR BLACK

REFERENCE : CATALOG #42 PAGE 21

VENDOR MUST SUPPLY INFORMATION WITH THIS ITEM

INFORMATION TO CONTAIN SUFFICIENT DATA TO IDENTIFY THE PART AND ESTABLISH ITS ELECTRICAL AND MECHANICAL CHARACTERISTICS AS DESCRIBED IN HIS CATALOG FOR QUALITY ASSURANCE

DIMENSION TOLERANCES WILL BE AS DESCRIBED IN MANUFACTURES LITERATURE COMPONENT WILL BE MARKED WITH TMC PART NUMBER i.e (TMC XXXXX) WHENEVER PRACTICAL

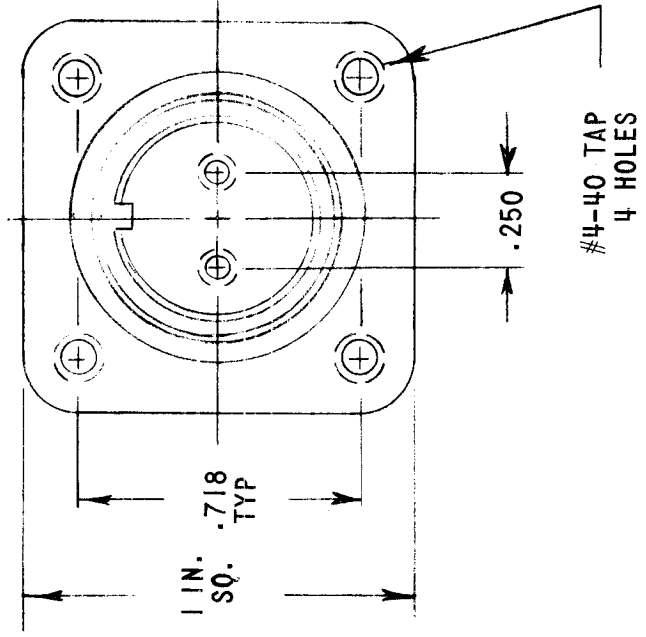
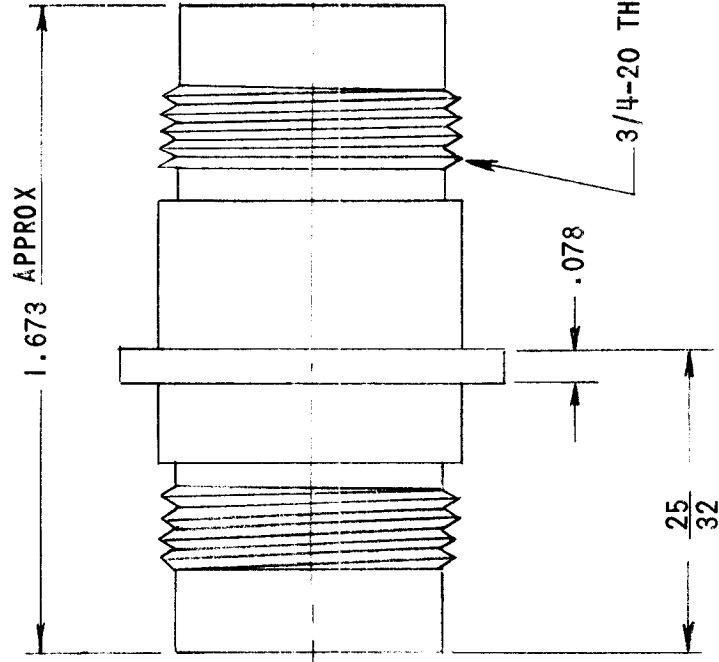
S401-237

UNLESS OTHERWISE SPECIFIED DIMENSIONS ARE IN INCHES AND INCLUDE CHEMICALLY APPLIED OR PLATED FINISHES	REQ'D	ITEM	PART NUMBER	DESCRIPTION	SYM.
DECIMALS .X ± .05 .XX ± .01 .XXX ± .005				LIST OF MATERIAL	
FRACTIONS 1/64 ANGLES 0° .30'				THE TECHNICAL MATERIEL CORP. MAMARONECK, NEW YORK	
MATERIAL	FINAL APPR			CONNECTOR, RECEPTACLE, ELECTRICAL (15 AMP, 125 V, 3 WIRE GROUNDING)	
FINISH	MECH. DES.	DATE			
	ELECT. DES.	DATE			
	CHECKED	DATE			
	DRAWN	DATE			
NOTICE TO PERSONS RECEIVING THIS DRAWING THE TECHNICAL MATERIEL CORPORATION claims proprietary right in the material disclosed hereon. This drawing is issued in confidence for engineering information only and may not be reproduced or used to manufacture anything shown hereon without permission from THE TECHNICAL MATERIEL CORPORATION to the user. This drawing is loaned for mutual assistance and is subject to recall at any time.	SIZE A	CODE IDENT. NO. 82679	DWG NO.	JJ 337	ISSUE A
	SCALE		SHEET	OF	

APPLICATION			REVISIONS						
QTY	MODEL USED ON	ASS'Y NO.	LTR	DESCRIPTION	DATE	E.M.N.NO	DRAFT	CHKD	APPD
	STANDARD		X	EXP. RELEASE	1.17.68	-	NS		<i>NS</i>
			Ø	ORIG. RELEASE FOR PROD.	1/23/68	0	C.V.		<i>NS</i>

MATERIALS: CONTACTS, FEMALE (2) BERYLLIUM COPPER
 ALL OTHER METAL PARTS: BRASS
 DIELECTRIC: REXOLITE

FINISH: ALL METAL PARTS 0.0002" - 0.0003" SILVER PLATING



UNLESS OTHERWISE SPECIFIED DIMENSIONS ARE IN INCHES AND INCLUDE CHEMICALLY APPLIED OR PLATED FINISHES	REQ'D ITEM	PART NUMBER	DESCRIPTION	SYM.
DECIMALS - FRACTIONS	A. MARTINENGO LIST OF MATERIAL			
.X ± .05 TOLS. 1/64	FINAL APPROVAL	DATE	THE TECHNICAL MATERIEL CORP.	
.XX ± .01 ANGLES	MECH. DES. <i>OPM</i>	1.23.68	MAMARONECK, NEW YORK	
.XXX ± .005	ELECT. DES.	DATE	CONNECTOR, RECEPTACLE	
MATERIAL AS NOTED	CHECKED	1.24.68		
FINISH AS NOTED	DRAWN <i>ABJ.</i>	1.17.68		
S401-70-(3940)				

NOTICE TO PERSONS RECEIVING THIS DRAWING		SIZE	CODE IDENT. NO.	DWG NO.	ISSUE
THE TECHNICAL MATERIEL CORPORATION claims proprietary right in the material disclosed hereon. This drawing is issued in confidence for engineering information only and may not be reproduced or used to manufacture anything shown hereon without permission from THE TECHNICAL MATERIEL CORPORATION to the user. This drawing is loaned for mutual assistance and is subject to recall at any time.		A	82679	JJ 339	1
		SCALE	SHEET	OF	

APPLICATION			REVISIONS						
QTY	MODEL USED ON	ASSY NO	LTR	DESCRIPTION	DATE	E.M.N.NO	DRAFT	CHKD	APPD
2	MSAR-4		X	EXPERIMENTAL REL	10/17/63	X	R.G.		
			Ø	ORIG. RELEASE FOR PROD.	10-22-65	Ø			



2.31 REF

1.770 REF

REMOVE SHADED AREA

.137

2.045

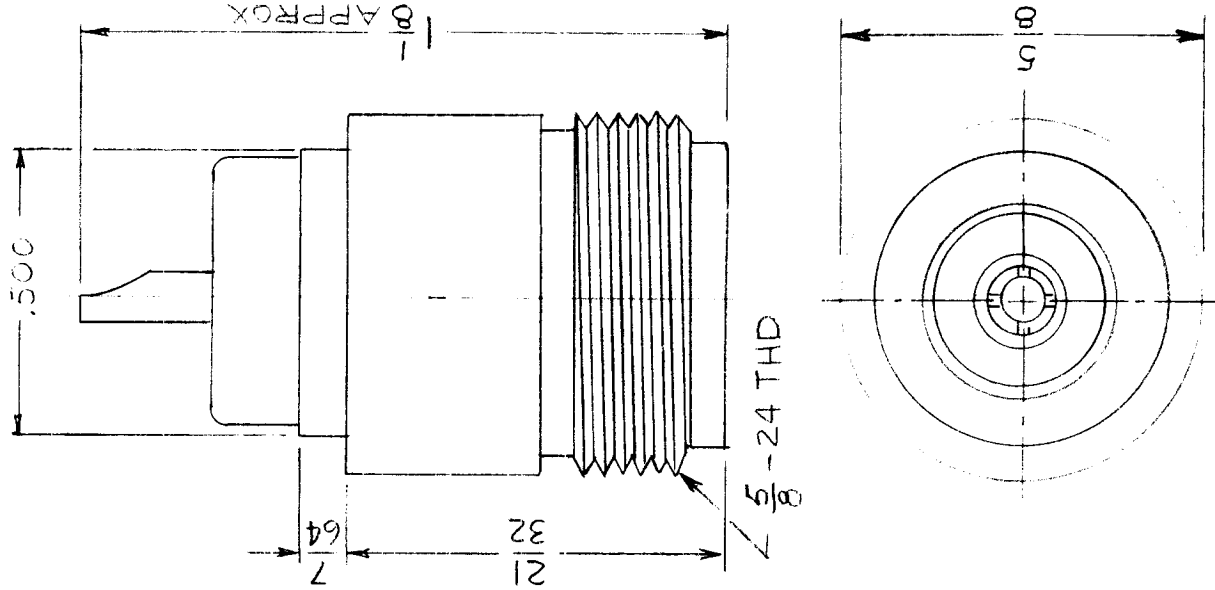
MATERIAL NOTE:
 USE TMC PART NO JJ336-1
 AND CUT TO DIMENSIONS
 SHOWN BY REMOVING SHADED
 AREAS.

REQUIREMENT	REQ'D	ITEM	PART NUMBER	DESCRIPTION	SYMBOL
UNLESS OTHERWISE SPECIFIED DIMENSIONS ARE IN INCHES AND INCLUDE CHEMICALLY APPLIED OR PLATED FINISHES				LIST OF MATERIAL SK3252-005-21	
DECIMALS					
.X ± .05					
.XX ± .01					
.XXX ± .005					
FRACTIONS					
1/64					
ANGLES					
0°-30'					
MATERIAL				THE TECHNICAL MATERIEL CORP.	
SEE NOTE				MAMARONECK, NEW YORK	
FINISH				CONNECTOR RECEPTACLE	
				ELECTRICAL, T/C F.V.D.	

SIZE	CODE IDENT. NO.	DWG NO.	ISSUE
A	82679	JJ340	Ø
SCALE	SHEET	OF	

NOTICE TO PERSONS RECEIVING THIS DRAWING
 THE TECHNICAL MATERIEL CORPORATION claims proprietary right in the material disclosed hereon. This drawing is issued in confidence for engineering information only and may not be reproduced or used to manufacture anything shown hereon without permission from THE TECHNICAL MATERIEL CORPORATION to the user. This drawing is loaned for mutual assistance and is subject to recall at any time.

APPLICATION			REVISIONS						
QTY	MODEL USED ON	ASSY NO.	LTR	DESCRIPTION	DATE	F M N NO	DRAFT	CHKD	APPD
2	SW458		X	EXPERIMENTAL RELEASE			C.V.		<i>JJA</i>
			Ø	ORIGINAL RELEASE			CV		<i>JJA</i>



SPECIFICATIONS

SERIES: N
 NO. OF CONTACTS: ONE
 TYPE OF CONTACTS: FEMALE
 DIELECTRIC: TEFLON

ELECTRICAL DATA
 MAX PEAK OPR VOLT: 1500 VOLTS
 FREQ. LIMIT: 10,000 Mcs
 NOMINAL IMPEDANCE: 70 OHMS

CABLE ACCOMMODATIONS
 TYPE: NONE

MATING ACCOMMODATIONS
 TYPE: N UG94A U

MATERIAL
 EXTERNAL PARTS: BRASS
 CONTACT: BERYLLIUM COPPER
 GASKET: NONE

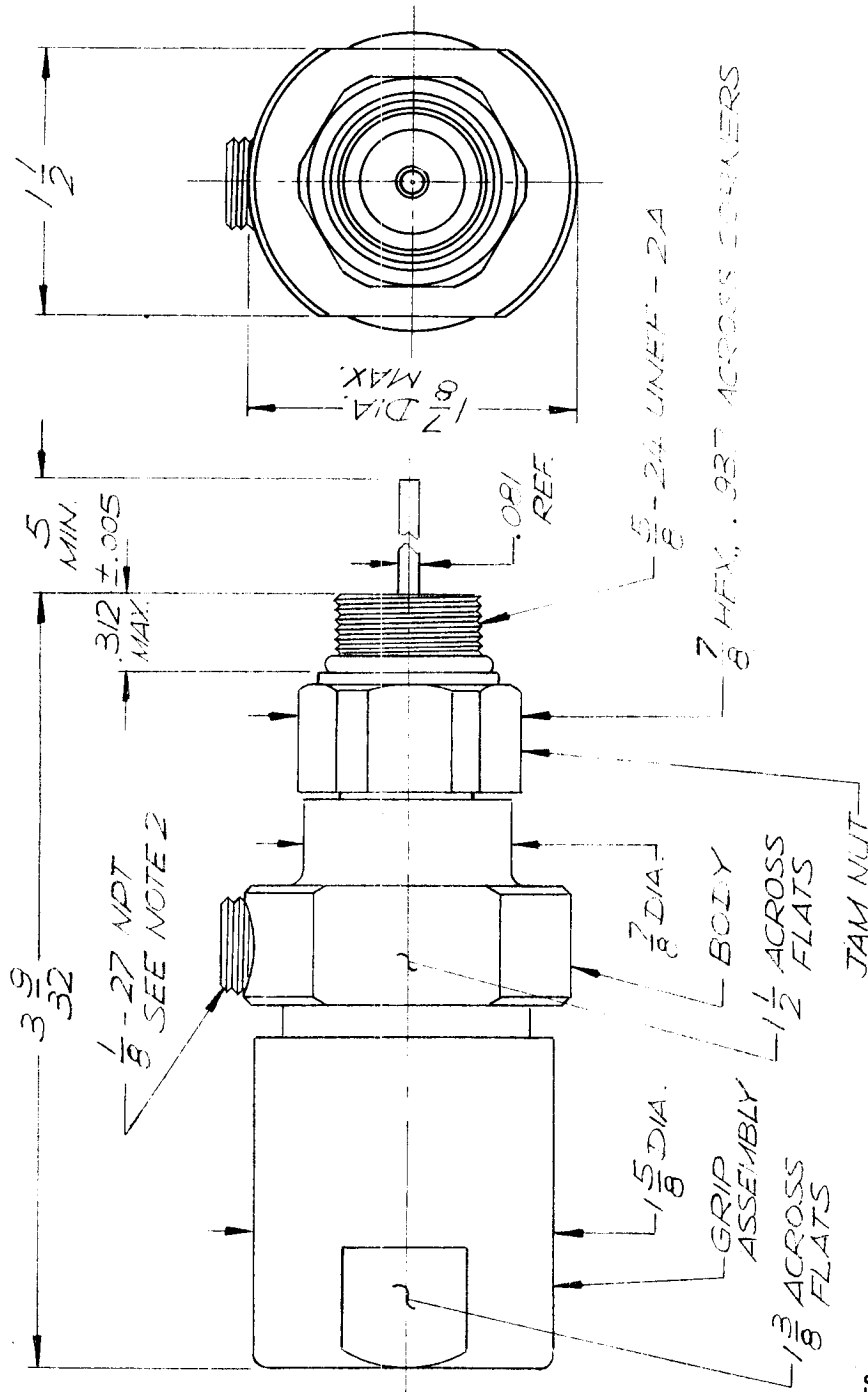
FINISH:
 EXTERNAL PARTS: SILVER PLATE,
 RHODIUM FLASH
 CONTACT: SILVER PLATE, GOLD FLASH
 PANEL
 MAX THICKNESS: NONE

UNLESS OTHERWISE SPECIFIED DIMENSIONS ARE IN INCHES AND INCLUDE CHEMICALLY APPLIED OR PLATED FINISHES	REQ'D	ITEM	PART NUMBER	DESCRIPTION	SYM.
DECIMALS				LIST OF MATERIAL	
FRACTIONS				THE TECHNICAL MATERIEL CORP.	
.X ± .05 TOLS. 1/64				MAMARONECK, NEW YORK	
.XX ± .01 ANGLES 0°-30'				CONNECTOR, RECEPTACLE	
.XXX ± .005				N TO SOLDER CUP (SPECIAL)	
MATERIAL SEE NOTE					
FINISH SEE NOTE					
S401-70 (3944)					

SIZE	CODE IDENT. NO.	DWG NO.	ISSUE
A	82679	JJ 341	Ø
SCALE	SHEET	OF	

NOTICE TO PERSONS RECEIVING THIS DRAWING
 THE TECHNICAL MATERIEL CORPORATION claims proprietary right in the material disclosed hereon. This drawing is issued in confidence for engineering information only and may not be reproduced or used to manufacture anything shown hereon without permission from THE TECHNICAL MATERIEL CORPORATION to the user. This drawing is loaned for mutual assistance and is subject to recall at any time.

APPLICATION			REVISIONS						
QTY	MODEL USED ON	ASSY NO.	LTR	DESCRIPTION	DATE	F M N NO	DRAFT	CHKD	APPD
	AX701		X	EXPERIMENTAL RELEASE	11/5/68		C.V.		<i>[Signature]</i>
			Ø	ORIG. RELEASE FOR PROD.	12/2/68		RS		<i>[Signature]</i>



NOTES:

- CONNECTOR DESIGNED FOR USE ON 1" 75 OHN SPIRAFIL II. MANUFACTURED BY PHELPS DODGE CORP., NEW YORK, N.Y. PHELPS DODGE PART NUMBER SL 100 75H.
- WHEN PROPERLY ASSEMBLED ON CABLE, CONNECTOR IS GUARANTEED TO MAINTAIN 30 P.S.I AIR.
- WHEN PROPERLY ASSEMBLED ON CABLE, THE CENTER CONDUCTOR CAPTURE IS INDEPENDENT OF THE AMPLIFIER HOUSING OR ITS TIE DOWN SCREW.
- INSTRUCTIONS AS PER TMC SPEC S1235.

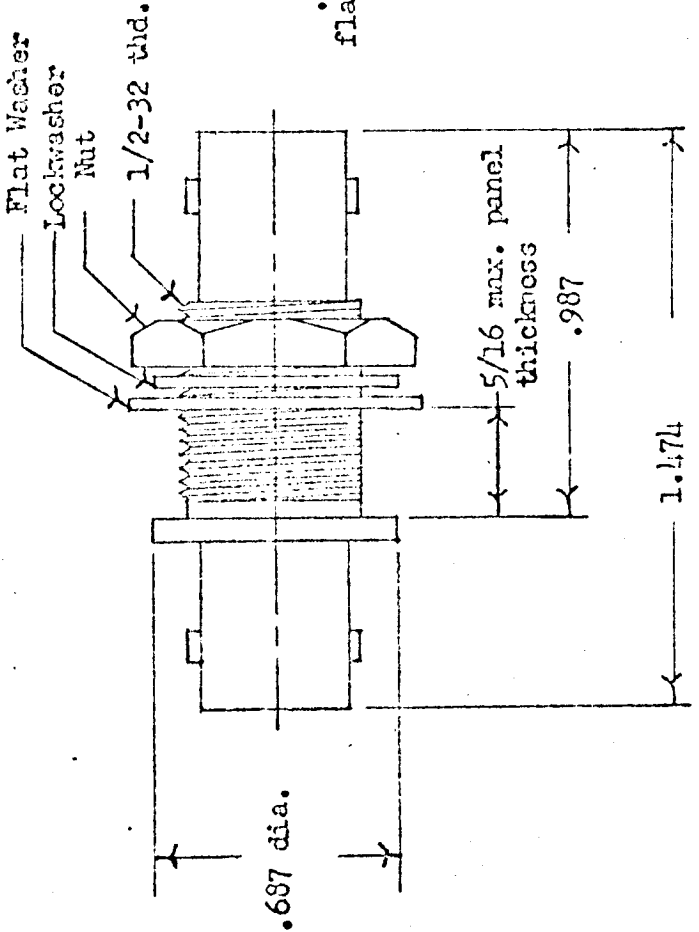
REQ'D ITEM	PART NUMBER	DESCRIPTION	SYM.
LIST OF MATERIAL			
THE TECHNICAL MATERIEL CORP. MAMARONECK, NEW YORK			
FINAL APPROVAL	DATE		
<i>[Signature]</i>	11/11/68		
MECH. DES.	DATE		
ELECT. DES.	DATE		
CHECKED	DATE		
<i>[Signature]</i>	11/5/68		
DRAWN	DATE		
<i>[Signature]</i>	11.5.68		
FINISH		CONNECTOR, END FITTING	
S401-477			
C755SLA100 E.F			

NOTICE TO PERSONS RECEIVING THIS DRAWING		SIZE	CODE IDENT. NO.	DWG NO.	ISSUE
THE TECHNICAL MATERIEL CORPORATION claims proprietary right in the material disclosed hereon. This drawing is issued in confidence for engineering information only and may not be reproduced or used to manufacture anything shown hereon without permission from THE TECHNICAL MATERIEL CORPORATION to the user. This drawing is loaned for mutual assistance and is subject to recall at any time.		A	82679	JJ - 344	Ø
		SCALE		SHEET	OF

APPLICATION

REVISIONS

QTY	MODEL USED ON	ASSY NO.	LTR	DESCRIPTION	DATE	E.M.N.NO	DRAFT	CHKD	APPD
A/S	JPP		Ø	ORIGINAL RELEASE	6/19/69		J.D.		J.D.



Specifications
 Series - BNC-70 (F-F)
 No. of contacts - one (1)
 Type of contact - female
 Dielectric - Teflon

Electrical data
 Max. peak volt. - 500v
 Freq. limit - 10,000MHz
 Nom. impedance - 70 ohms

Material
 External parts - brass
 Contact - beryllium copper
 Lockwasher - phosphor bronze

Finish
 External parts - silver plate & rhodium flash
 Contact - silver plate & gold flash

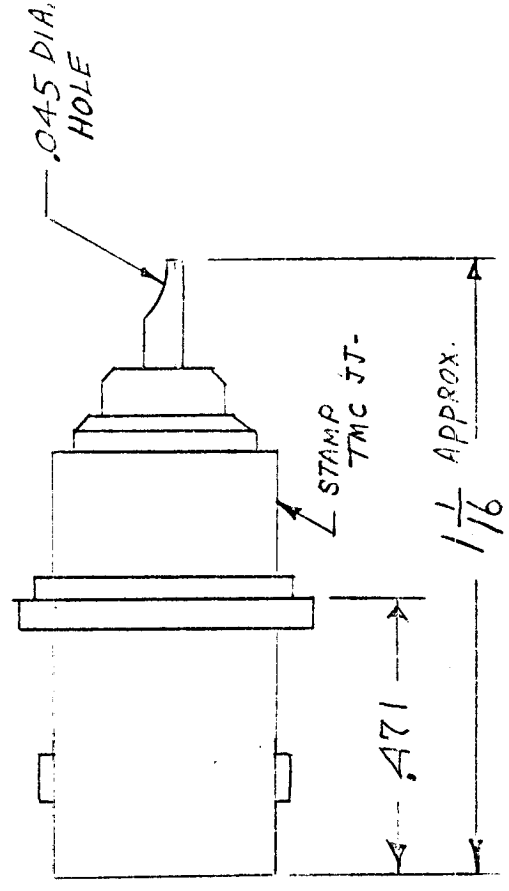
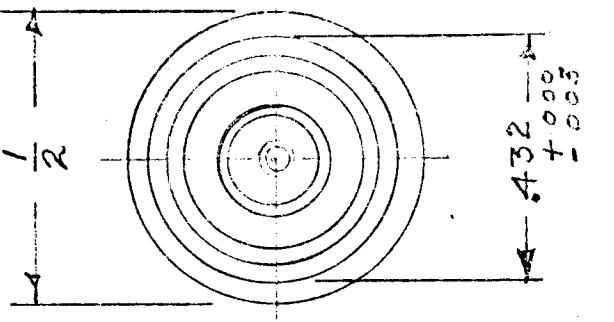
NOTE CAUTION:
 USE BNC MATING SERIES
 70 OHM CONNECTER

UNLESS OTHERWISE SPECIFIED DIMENSIONS ARE IN INCHES AND INCLUDE CHEMICALLY APPLIED OR PLATED FINISHES	REQ'D	ITEM	PART NUMBER	DESCRIPTION	SYM.
DECIMALS				LIST OF MATERIAL	
X ± .05					
XX ± .01				THE TECHNICAL MATERIEL CORP.	
XXX ± .005				MAMARONECK, NEW YORK	
MATERIAL SEE NOTE				ADAPTER, BULKHEAD MTD.	
FINISH SEE NOTE					
FINAL APPROVAL					
MECH. DES.					
ELECT. DES.					
CHECKED					
DRAWN					

NOTICE TO PERSONS RECEIVING THIS DRAWING
 THE TECHNICAL MATERIEL CORPORATION claims proprietary right in the material disclosed hereon. This drawing is issued in confidence for engineering information only and may not be reproduced or used to manufacture anything shown hereon without permission from THE TECHNICAL MATERIEL CORPORATION to the user. This drawing is loaned for mutual assistance and is subject to recall at any time.

SIZE	CODE IDENT. NO.	DWG NO.	ISSUE
A	82679	JT 345	1
SCALE		S401-70 3743	SHEET
			OF

APPLICATION		REVISIONS							
QTY	MODEL USED ON	ASSY NO.	LTR	DESCRIPTION	DATE	E.M.N.NO	DRAFT	CHKD	APPD
2	Sw 477		Ø	ORIGINAL RELEASE	6/19/69		40		
2	Sw 483								
2	Sw 484								
2	Sw 489								



Specifications
 Series - BNC-70 (F)
 No. of contacts - one (1)
 Type of contact - female
 Dielectric - Teflon.

Electrical data
 Max. peak volt. - 500v
 Freq. limit - 10,000MHz
 Nom. impedance - 70 ohms

Material
 External parts - brass
 Contact - beryllium copper
 Lockwasher - phosphor bronze

Finish
 External parts - silver plate & rhodium flash
 Contact - silver plate & gold flash

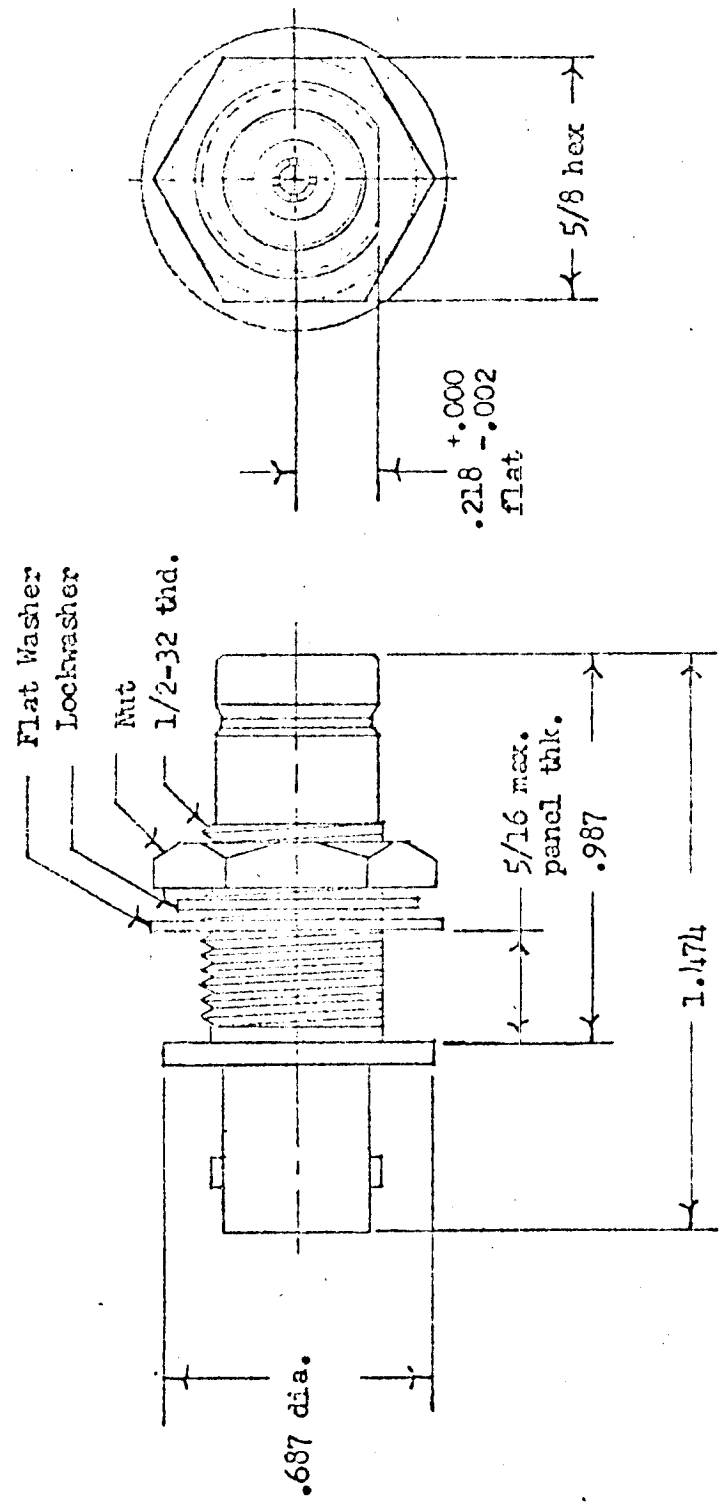
Note CAUTION: Use BNC MATING TO OHM SERIES ONLY.

UNLESS OTHERWISE SPECIFIED DIMENSIONS ARE IN INCHES AND INCLUDE CHEMICALLY APPLIED OR PLATED FINISHES		REQ'D	ITEM	PART NUMBER	DESCRIPTION	SYM.
DECIMALS	FRACTIONS	LIST OF MATERIAL				
.X ± .05	1/64	THE TECHNICAL MATERIEL CORP.				
.XX ± .01	ANGLES	MAMARONECK, NEW YORK				
.XXX ± .005	90°-30'	RECEPTACLE, BNC, P/O SW-SERIES				
MATERIAL	FINISH	FINAL APPROVAL	MECH. DES.	ELECT. DES.	CHECKED	DRAWN
		DATE	DATE	DATE	DATE	DATE
		6/19/69			6/19/69	6/19/69
S401-70-3947		NOTICE TO PERSONS RECEIVING THIS DRAWING				
		THE TECHNICAL MATERIEL CORPORATION claims proprietary right in the material disclosed hereon. This drawing is issued in confidence for engineering information only and may not be reproduced or used to manufacture anything shown hereon without permission from THE TECHNICAL MATERIEL CORPORATION to the user. This drawing is loaned for mutual assistance and is subject to recall at any time.				
SIZE	CODE IDENT. NO.	DWG NO.	ISSUE			
A	82679	JJ 346	1			
SCALE	SHEET		OF			
			4			

APPLICATION

REVISIONS

QTY	MODEL USED ON	ASSY NO.	LTR	DESCRIPTION	DATE	E.M.N.NO	DRAFT	CHKD	APPD
A/R	QDP		Ø	ORIGINAL RELEASE	6/10/67	Ø	J-D		J-D



Specifications
 Series - BNC-70 to QDM-70

No. of contacts - one (1)
 Type of contact - female
 Dielectric - Teflon

Electrical Data
 Max. peak volt. - 500v
 Freq. limit - 10,000MHz
 Nom. impedance - 70 ohms

Material
 External parts - brass
 Contact - beryllium copper
 Lockwasher - phosphor bronze

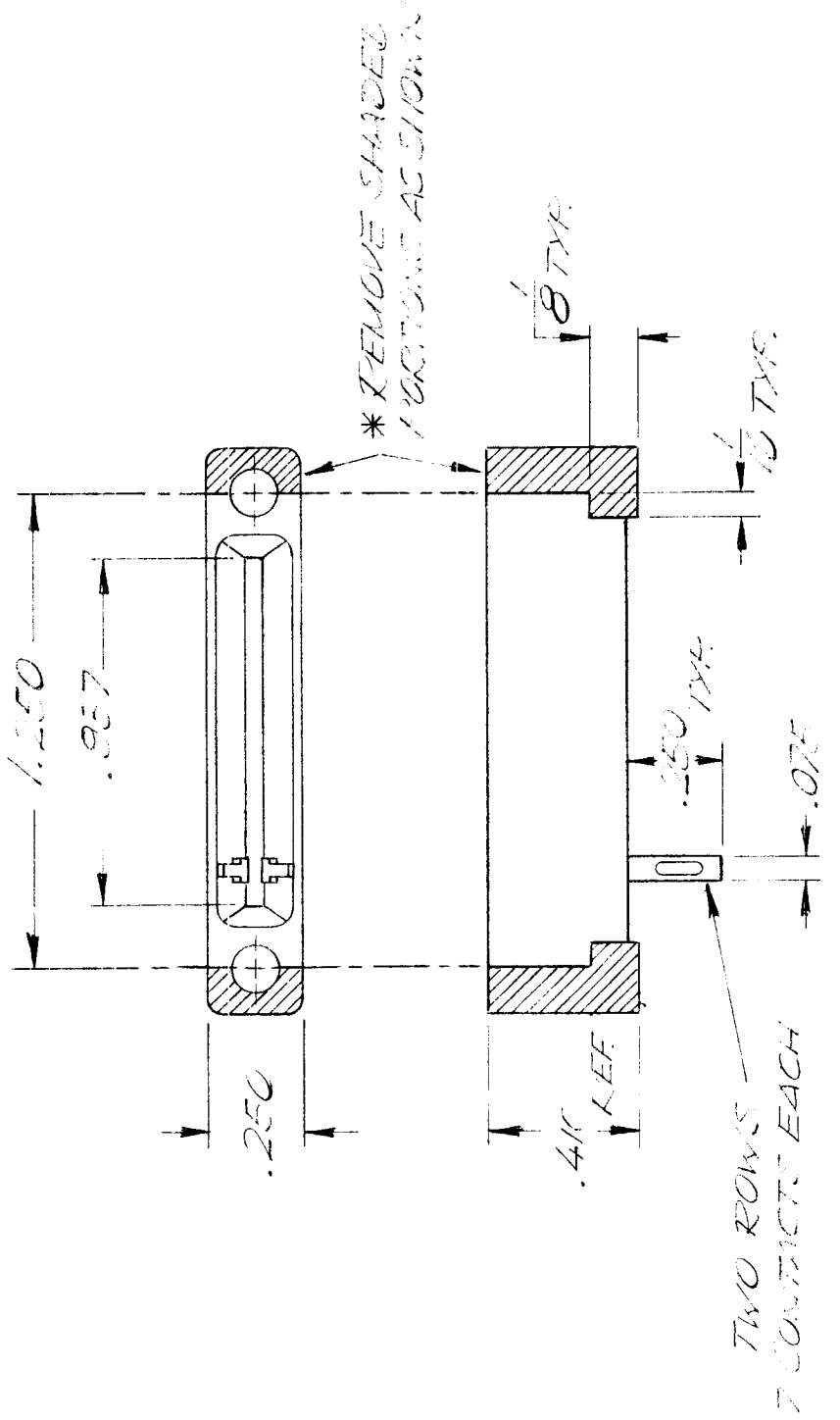
Finish
 External parts - silver plate & rhodium flash
 Contact - silver plate & gold flash

NOTE. CAUTION; USE MATING SERIES TO OHM CONNECTERS.

UNLESS OTHERWISE SPECIFIED DIMENSIONS ARE IN INCHES AND INCLUDE CHEMICALLY APPLIED OR PLATED FINISHES	REQ'D ITEM	PART NUMBER	DESCRIPTION	SYM.
DECIMALS X ± .05 TOLS. 1/64 .XX ± .01 ANGLES 0°-30' .XXX ± .005			LIST OF MATERIAL	
MATERIAL SEE NOTE			THE TECHNICAL MATERIEL CORP. MAMARONECK, NEW YORK	
FINISH SEE NOTE			ADAPTER, BULKHEAD MTD.	
FINAL APPROVAL				
MECH. DES.				
ELECT. DES.				
CHECKED				
DRAWN				

NOTICE TO PERSONS RECEIVING THIS DRAWING THE TECHNICAL MATERIEL CORPORATION claims proprietary right in the material disclosed herein. This drawing is issued in confidence for engineering information only and may not be reproduced or used to manufacture anything shown hereon without permission from THE TECHNICAL MATERIEL CORPORATION to the user. This drawing is loaned for mutual assistance and is subject to recall at any time.		SIZE A	CODE IDENT. NO. 82679	DWG NO. JJ347	ISSUE Ø
		SCALE	6401-70-3961	SHEET	OF

APPLICATION				REVISIONS					
QTY	MODEL USED ON	ASS'Y NO.	LTR	DESCRIPTION	DATE	E.M.N.NO	DRAFT	CHKD	APPD
9	RT114-3		X	EXP RELEASE	6/17/70		CH	WAB	
0			0	ORIG RELEASE FOR PROD	6/17/70		CV		



UNLESS OTHERWISE SPECIFIED DIMENSIONS ARE IN INCHES AND INCLUDE CHEMICALLY APPLIED OR PLATED FINISHES	REQ'D	ITEM	PART NUMBER	DESCRIPTION	SYM.
DECIMALS .X ± .05 .XX ± .01 .XXX ± .005				LIST OF MATERIAL	
FRACTIONS 1/64 ANGLES 0° .30'				THE TECHNICAL MATERIEL CORP. MAMARONECK, NEW YORK	
MATERIAL				CONNECTOR PLACES FLAME	
FINISH					
FINAL APPROVAL M. J. Marano MECH DES. 6-5-70					
ELECT. DES.					
CHECKED J. J. Marano					
DRAWN J. J. Marano					
DATE 6-5-70					
DATE 6-5-70					
DATE 6-5-70					
DATE 6-5-70					

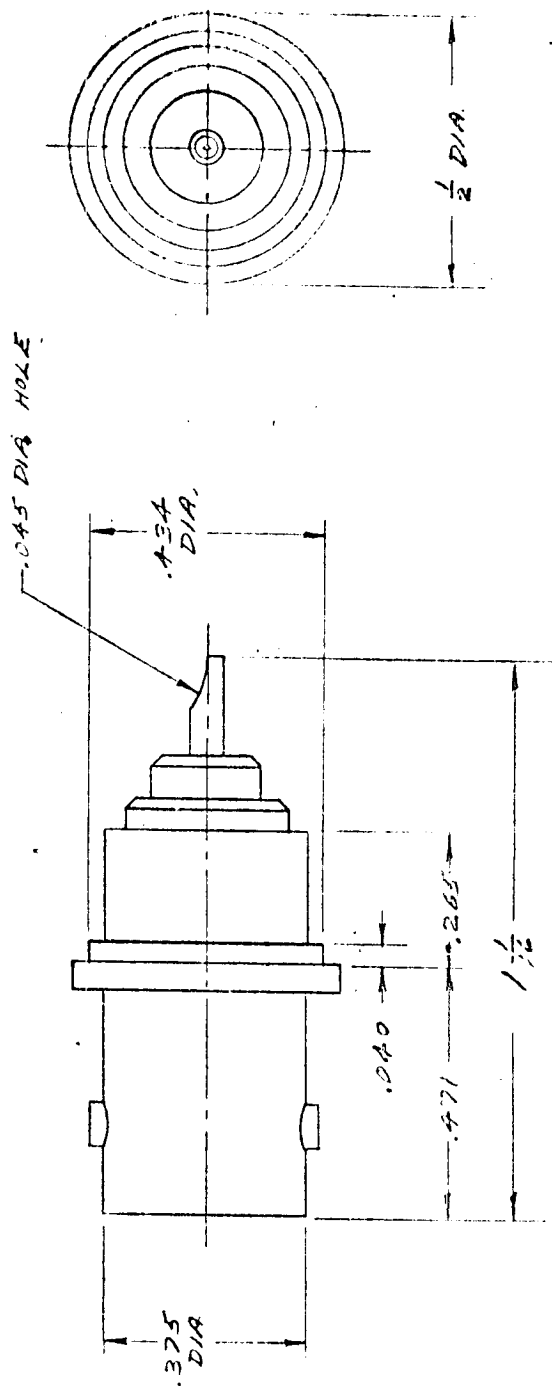
SIZE	CODE IDENT. NO.	DWG NO.	ISSUE
A	82679	117350	0
SCALE 2:1		SHEET	OF

NOTICE TO PERSONS RECEIVING THIS DRAWING
 THE TECHNICAL MATERIEL CORPORATION claims proprietary right in the material disclosed hereon. This drawing is issued in confidence for engineering information only and may not be reproduced or used to manufacture anything shown hereon without permission from THE TECHNICAL MATERIEL CORPORATION to the user. This drawing is loaned for mutual assistance and is subject to recall at any time.

APPLICATION			REVISIONS						
QTY	MODEL USED ON	ASSY NO.	LTR	DESCRIPTION	DATE	E.M.N. NO	DRAFT	CHKD	APPD
	SW477	A5600	Ø		6/20/64		✓		

Series: BNC-70
 Material: Brass, silver plated and rhodium flash
 No. of Contacts: one
 Shell: Beryllium cooper, silver plated and gold flashed
 Type of Contacts: female
 Contact: Beryllium cooper, silver plated and gold flashed
 Dielectric: Teflon
 Insulator: Teflon
 Max. Peak Opr. Voltage: 500 volts
 Nominal Impedance: 70 ohms

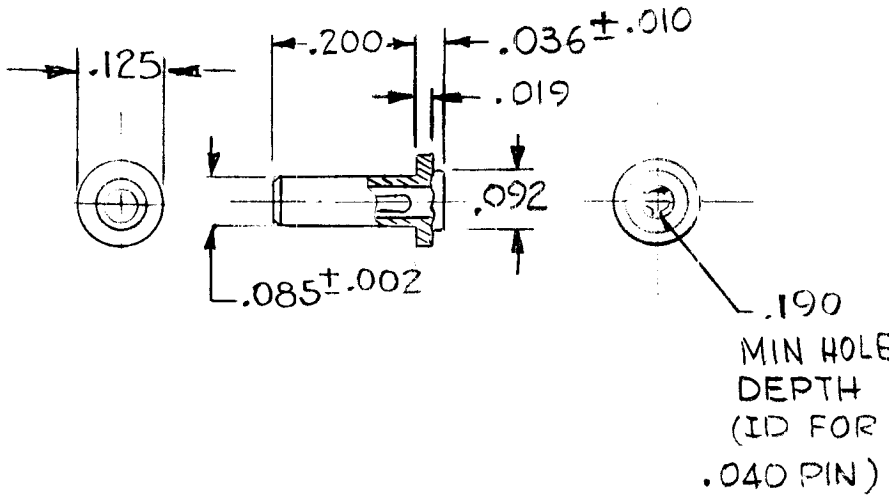
MATES WITH PL289



UNLESS OTHERWISE SPECIFIED DIMENSIONS ARE IN INCHES AND INCLUDE CHEMICALLY APPLIED OR PLATED FINISHES	REQ'D	ITEM	PART NUMBER	DESCRIPTION	SYM.
DECIMALS .X ± .05 .XX ± .01 .XXX ± .005				LIST OF MATERIAL	
FRACTIONS 1/64 ANGLES 0°-30°				THE TECHNICAL MATERIEL CORP. MAMARONECK, NEW YORK	
MATERIAL	FINAL APPROVAL	DATE		RECEPTACLE, BNC 70 OHM	
FINISH	MECH. DES.	DATE			
	ELECT. DES.	DATE			
	CHECKED	DATE			
	DRAWN	DATE			
S401-70 (#3947)					

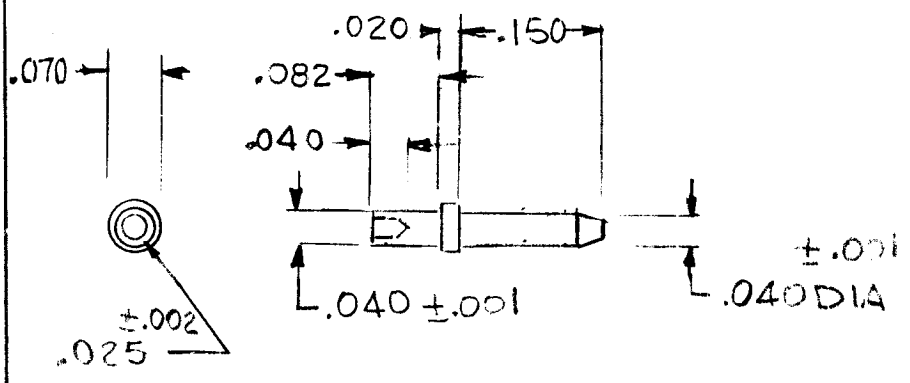
NOTICE TO PERSONS RECEIVING THIS DRAWING THE TECHNICAL MATERIEL CORPORATION claims proprietary right in the material disclosed hereon. This drawing is issued in confidence for engineering information only and may not be reproduced or used to manufacture anything shown hereon without permission from THE TECHNICAL MATERIEL CORPORATION to the user. This drawing is loaned for mutual assistance and is subject to recall at any time.		SIZE A	CODE IDENT. NO. 82679	DWG NO. JJ 354	ISSUE
SCALE		SHEET		OF	

REQ. PER UNIT	USED ON			JJ 357	X
	MODEL	ASS'Y. NO.	DATE		
	GPR-110	45645/46	1-4-77		
			1-9-77		



JJ 357-2

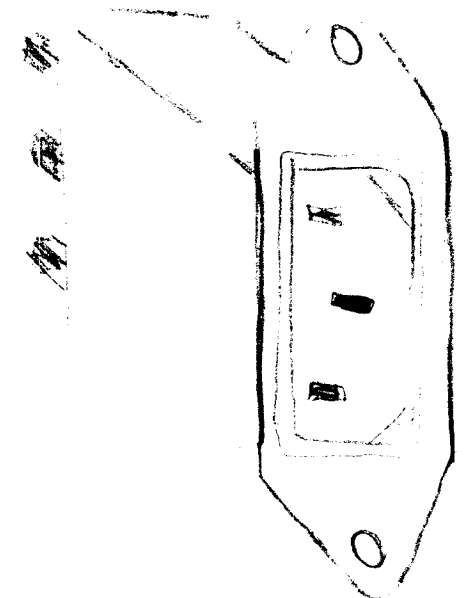
MFG. P/NO. 450-3388-01-03



JJ 357-1

MFG. P/NO. 460-2971-02

REQ. ITEM	PART NO.	DESCRIPTION	SYMBOL
		TMC INDUSTRIAL CORP. MAMARONECK, NEW YORK	
		CONNECTORS PIN & JACK	
ISSUE	ITEM	CHANGED FROM	DATE
TOLERANCES		SCALE: S401-CAMBION	
DEC. DIM. ±		MAXIMUM ALLOWABLE TOLERANCES HAVE BEEN DETERMINED AND ANY DEVIATIONS WILL BE CAUSE FOR REJECTION.	
FRAC. DIM. ±		REMOVE ALL BURRS AND SHARP EDGES	
ANGULAR DIM. ±			
TYPE & TEMPER		HEAT TREAT. SPEC.	DRAWN
FINISH & SPEC. NO.		ELEC. DES. APP.	MECH. DES. APP.
		GDL	OR
			FINAL APPROVAL
			JJ 357

APPLICATION		REVISIONS							
QTY	MODIFIED ON	ASSY NO.	LTR	DESCRIPTION	DATE	E.M.N.O	DRAFT	CHKD	APPD
 <p style="text-align: center; font-size: 2em; font-family: cursive;">SWITCHBOARD EAG-301</p>									
LIST OF MATERIAL									
UNLESS OTHERWISE SPECIFIED DIMENSIONS ARE IN INCHES AND INCLUDE CHEMICALLY APPLIED OR PLATED FINISHES		REQ'D	ITEM	PART NUMBER	DESCRIPTION	SYM.			
DECIMALS FRACTIONS .X ± .05 TOLS. 1/64 .XX ± .01 ANGLES .XXX ± .005 0° - 30'		FINAL APPROVAL		DATE	THE TECHNICAL MATERIEL CORP. MAMARONECK, NEW YORK Connector Recp, Power(AC)				
MATERIAL		MECH. DES.		DATE					
FINISH		ELECT. DES.		DATE					
		CHECKED		DATE					
		DRAWN		DATE					
NOTICE TO PERSONS RECEIVING THIS DRAWING THE TECHNICAL MATERIEL CORPORATION claims proprietary right in the material disclosed hereon. This drawing is issued in confidence for engineering information only and may not be reproduced or used to manufacture anything shown hereon without permission from THE TECHNICAL MATERIEL CORPORATION to the user. This drawing is loaned for mutual assistance and is subject to recall at any time.		SIZE	CODE IDENT. NO.	DWG NO.	ISSUE				
		A	82679	JJ	359				
		SCALE			SHEET	OF			

APPLICATION

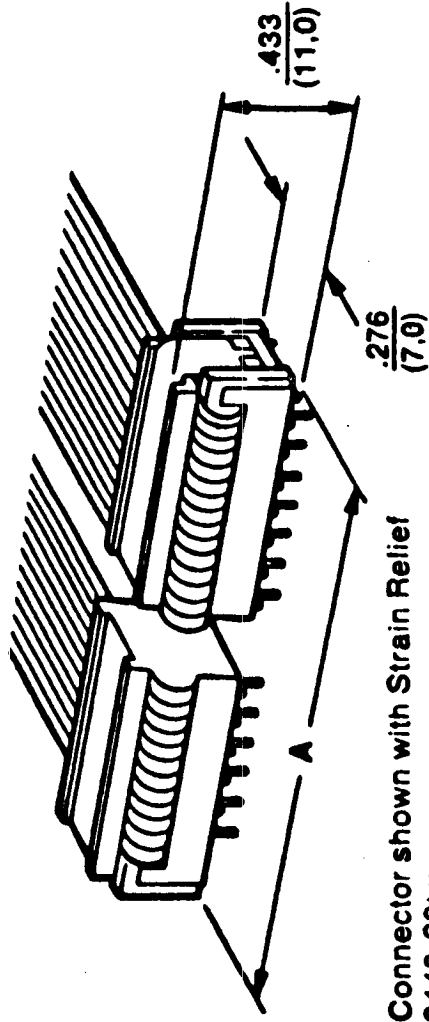
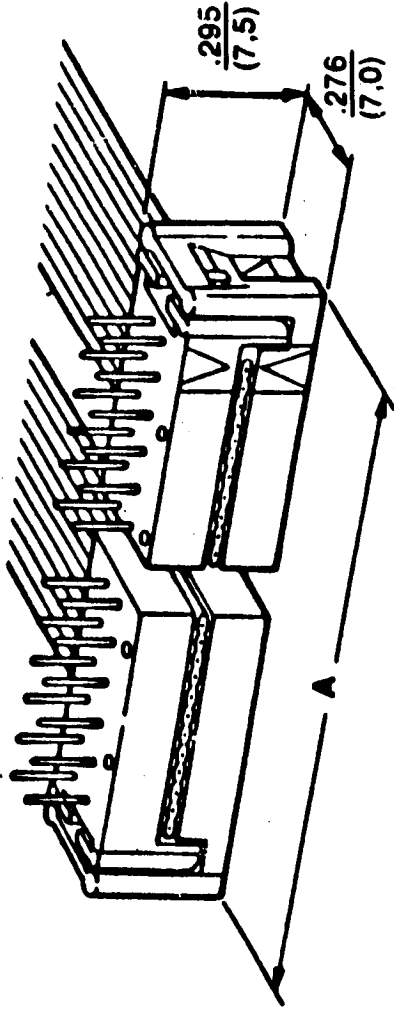
REVISIONS

QTY	MODEL USED ON	ASS'Y NO.	LTR	DESCRIPTION	DATE	E.M.N.NO	DRAFT	CHKC	APPD
2	MMX-4	A5845							

2-Row Version

.100" X .100" (2,54 mm X 2,54 mm)

(For flat cable with .050" [1,27 mm] conductor centers)



Connector shown with Strain Relief
3448-39xx

Contact Quantity	MFG Part Number*	Dimension A
26	3926-000T	1.60 (40.8)

REF 5401-535

UNLESS OTHERWISE SPECIFIED
DIMENSIONS ARE IN INCHES
AND INCLUDE CHEMICALLY APPLIED
OR PLATED FINISHES

DECIMALS FRACTIONS
.X ± .05 TOLS. 1/64
.XX ± .01 ANGLES
.XXX ± .005 ° 30'

MATERIAL

FINISH

REQ'D ITEM	PART NUMBER	DESCRIPTION	SYM.
LIST OF MATERIAL			
THE TECHNICAL MATERIEL CORP. MAMARONECK, NEW YORK			

FINAL APPROVAL DATE

MECH. DES.

ELECT. DES.

CHECKED

DRAWN RAW

DATE 2-5-85

NOTICE TO PERSONS RECEIVING THIS DRAWING
THE TECHNICAL MATERIEL CORPORATION claims proprietary right in the material disclosed hereon. This drawing is issued in confidence for engineering information only and may not be reproduced or used to manufacture anything shown hereon without permission from THE TECHNICAL MATERIEL CORPORATION to the user. This drawing is loaned for mutual assistance and is subject to recall at any time.

SIZE CODE IDENT. NO. DWG NO.

A 82679 JJ362

ISSUE

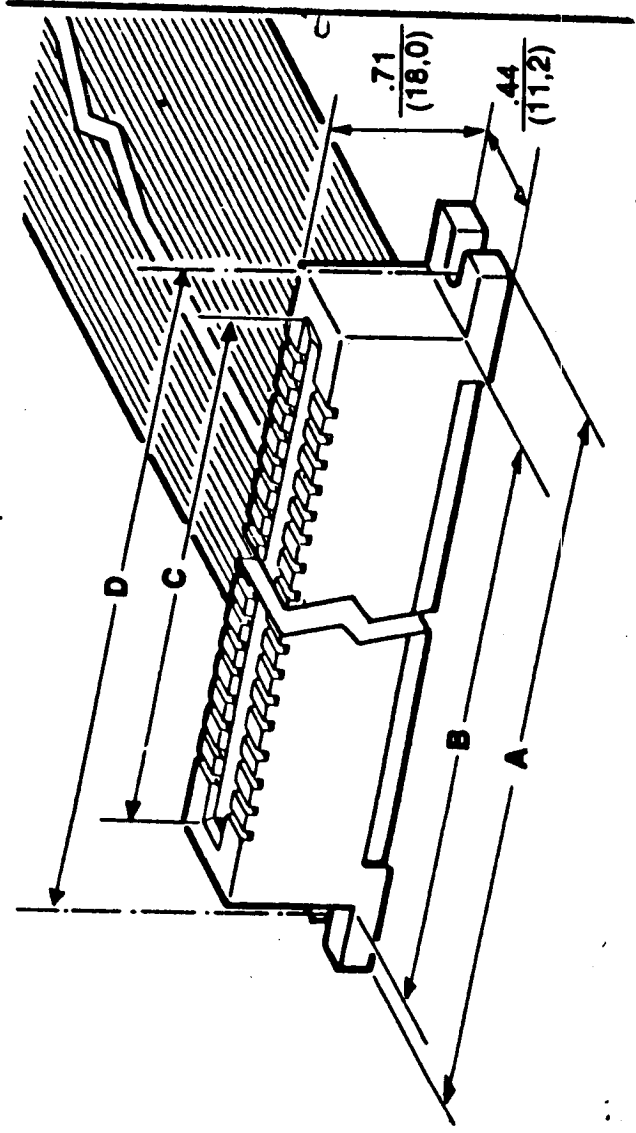
φ

SCALE

SHEET

OF

APPLICATION		REVISIONS	
QTY	MODEL USED ON	ASS'Y NO	LTR
1	MMX4	A5845	
	DESCRIPTION	DATE	E.M.N.NO
			CHKD
			APPD



Contact Qty	MFG Part Number	Mounting Style	Dimensions			
			A	B	C	D
26	3462-	Without Mounting	-	1.76 (44.7)	1.404 (35.66)	-
	0001	Flanges				

REF 5401-535

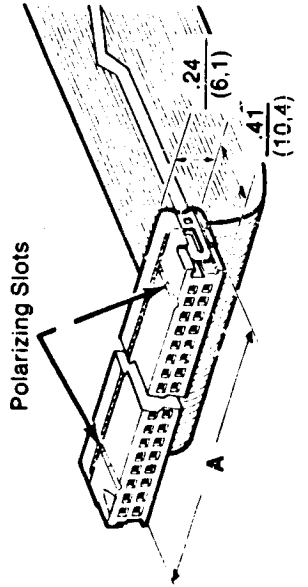
UNLESS OTHERWISE SPECIFIED DIMENSIONS ARE IN INCHES AND INCLUDE CHEMICALLY APPLIED OR PLATED FINISHES		REQ'D ITEM		PART NUMBER		DESCRIPTION		SYM.	
DECIMALS		FRACTIONS		LIST OF MATERIAL		THE TECHNICAL MATERIEL CORP.			
.X ± .05		1/64		FINAL APPROVAL		MAMARONECK, NEW YORK			
.XX ± .01		ANGLES		MECH. DES.		P.C.B. EDGE CONNECTOR			
.XXX ± .005		90°-30°		ELECT. DES.					
MATERIAL		CHECKED		DATE					
FINISH		DRAWN		DATE					
		PRLW		4-15-68					

NOTICE TO PERSONS RECEIVING THIS DRAWING		SIZE		CODE IDENT. NO.		DWG NO.		ISSUE	
THE TECHNICAL MATERIEL CORPORATION claims proprietary right in the material disclosed hereon. This drawing is issued in confidence for engineering information only and may not be reproduced or used to manufacture anything shown hereon without permission from THE TECHNICAL MATERIEL CORPORATION to the user. This drawing is loaned for mutual assistance and is subject to recall at any time.		A		82679		JJ 363		0	
		SCALE		SHEET		OF			

APPLICATION		REVISIONS							
QTY	MODEL USED ON	ASS'Y NO.	LTR	DESCRIPTION	DATE	E.M.N.NO	DRAFT	CHKD	APPD

1 MMX-4 A 5845

**Socket Connector
Without Strain Relief**



Contact Quantity	MFG Part Number*+	Military Part No.	Description	Dimension
26	3399-7000	M83503/	Closed end Cover w/o Strain Relief	A 1.48 (37.6)

REF: S401-535

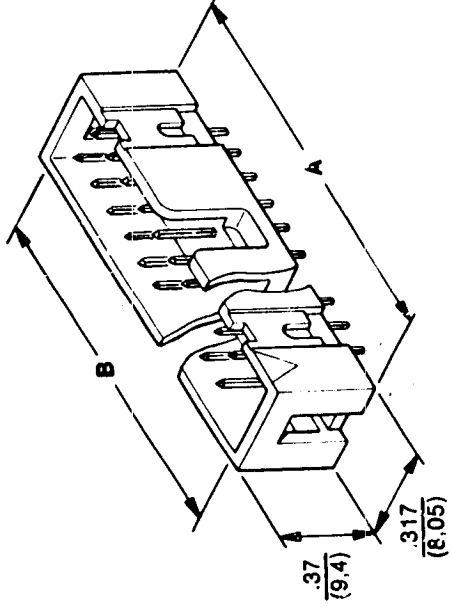
UNLESS OTHERWISE SPECIFIED DIMENSIONS ARE IN INCHES AND INCLUDE CHEMICALLY APPLIED OR PLATED FINISHES		REQ'D ITEM		PART NUMBER		DESCRIPTION		SYM.	
DECIMALS		FRACTIONS		LIST OF MATERIAL		THE TECHNICAL MATERIEL CORP.			
.X ± .05	1/64	FINAL APPROVAL		DATE		MAMARONECK, NEW YORK			
.XX ± .01	ANGLES	MECH. DES.		DATE		CONNECTOR, SOCKET			
.XXX ± .005	0°-30'	ELECT. DES.		DATE					
MATERIAL		CHECKED		DATE					
FINISH		DRAWN		DATE					

NOTICE TO PERSONS RECEIVING THIS DRAWING		SIZE		CODE IDENT. NO.		DWG NO.		ISSUE	
THE TECHNICAL MATERIEL CORPORATION claims proprietary right in the material disclosed hereon. This drawing is issued in confidence for engineering information only and may not be reproduced or used to manufacture anything shown hereon without permission from THE TECHNICAL MATERIEL CORPORATION to the user. This drawing is loaned for mutual assistance and is subject to recall at any time.		A		82679		JJ 364		Q	
		SCALE		SHEET		OF			

APPLICATION		REVISIONS							
QTY	MODEL USED ON	ASSY NO.	ITR	DESCRIPTION	DATE	F M N NO	DRAFT	CHKD	APPD

1 MAM X-4 A 5836

Header 4-Wall Low Profile Straight Solder Pin .100" X .100"



Contact Quantity	Straight Solder Pin MFG Part No.	Dimensions		
		A	B	C
26	35AB-6003	1.61 (40.9)	1.51 (38.4)	.155 (3.94)

REF: 401-535

REQ'D	ITEM	PART NUMBER	DESCRIPTION	SYM.
LIST OF MATERIAL				
THE TECHNICAL MATERIEL CORP. MAMARONECK, NEW YORK				
CONNECTOR HEADERS				
FINAL APPROVAL	DATE	MATERIAL		
MECH. DES.	DATE	FINISH		
ELECT. DES.	DATE	FINISH		
CHECKED	DATE	FINISH		
DRAWN	DATE	FINISH		

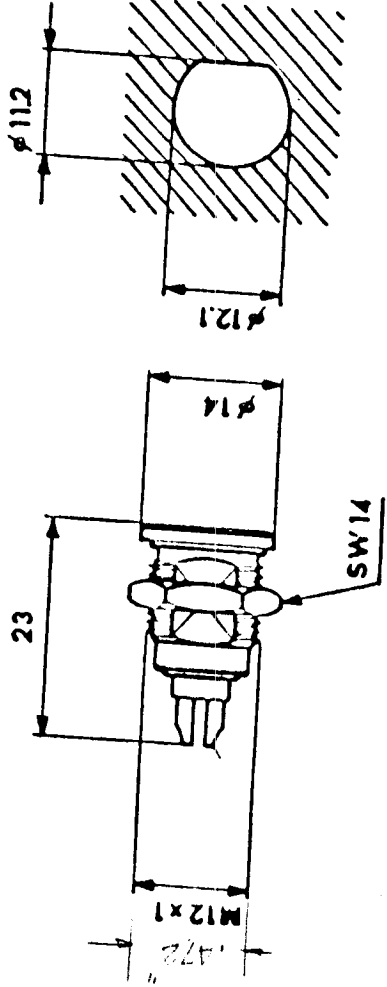
NOTICE TO PERSONS RECEIVING THIS DRAWING THE TECHNICAL MATERIEL CORPORATION claims proprietary right in the material disclosed hereon. This drawing is issued in confidence for engineering information only and may not be reproduced or used to manufacture anything shown hereon without permission from THE TECHNICAL MATERIEL CORPORATION to the user. This drawing is loaned for mutual assistance and is subject to recall at any time.		SIZE	CODE IDENT. NO.	DWG NO.	ISSUE
A	82679	JJ365		XO	
SCALE		SHEET	OF		

REVISIONS

APPLICATION

QTY	MODEL USED ON	ASS'Y NO.	LTR	DESCRIPTION	DATE	E.M.N.NO	DRAFT	CHKD	APPD
-----	---------------	-----------	-----	-------------	------	----------	-------	------	------

REVISIONS
 17L 296
 103,000



MFG PN DIC 530-530

REQ'D	ITEM	PART NUMBER	DESCRIPTION	SYMBOL
LIST OF MATERIAL				
THE TECHNICAL MATERIEL CORP. MAMARONECK, NEW YORK				
FINAL APPROVAL	DATE			
MECH. DES.	DATE			
ELECT. DES.	DATE			
CHECKED	DATE			
DRAWN	DATE			

NOTICE TO PERSONS RECEIVING THIS DRAWING		SIZE	CODE IDENT. NO.	DWG NO.	ISSUE
THE TECHNICAL MATERIEL CORPORATION claims proprietary right in the material disclosed hereon. This drawing is issued in confidence for engineering information only and may not be reproduced or used to manufacture anything shown hereon without permission from THE TECHNICAL MATERIEL CORPORATION to the user. This drawing is loaned for mutual assistance and is subject to recall at any time.		A	82679		JT 0000

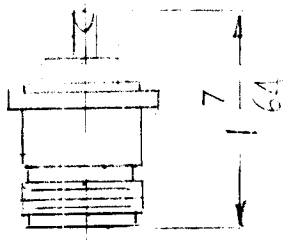
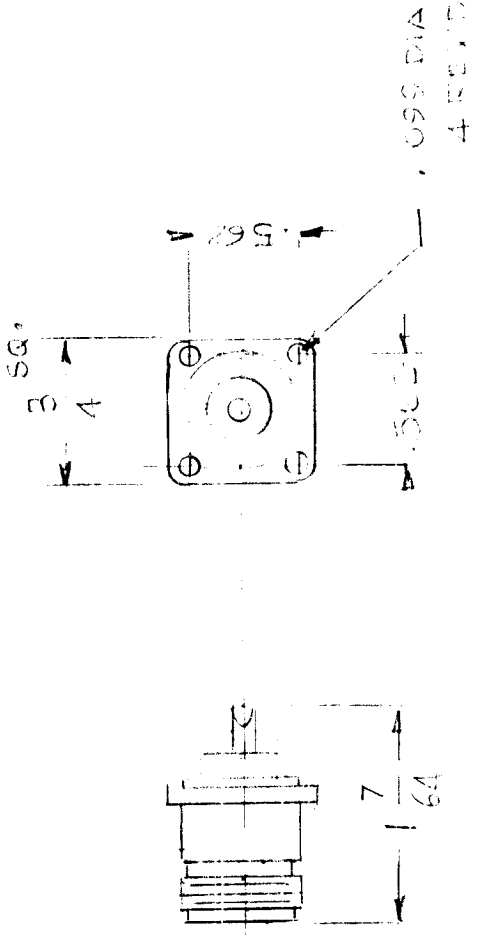
SCALE	SHEET	OF
-------	-------	----

APPLICATION

REVISIONS

QTY	MODEL USED ON	ASSY NO	ITR	DESCRIPTION	DATE	E.M.N. NO	DRAFT	CHKD	APPD
-----	---------------	---------	-----	-------------	------	-----------	-------	------	------

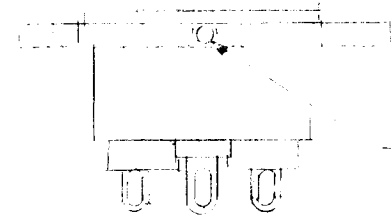
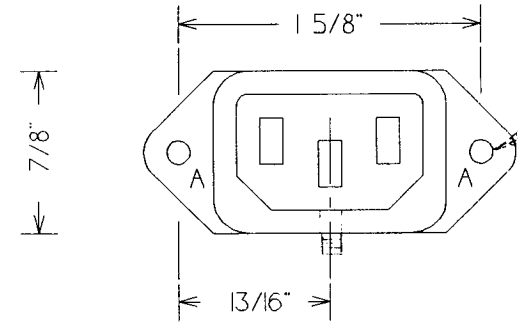
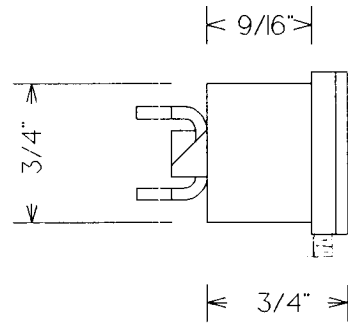
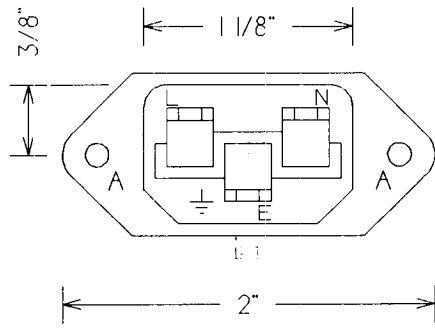
8 AM-10-10-10



AM-10-10-10

UNLESS OTHERWISE SPECIFIED DIMENSIONS ARE IN INCHES AND INCLUDE CHEMICALLY APPLIED OR PLATED FINISHES		REQ'D	ITEM	PART NUMBER	DESCRIPTION	SYM.
DECIMALS		LIST OF MATERIAL				
FRACTIONS		THE TECHNICAL MATERIEL CORP.				
.X ± .05 TOLS. 1/64		MAMARONECK, NEW YORK				
.XX ± .01 ANGLES 0°-30'		RF CONNECTOR (FEMALE)				
.XXX ± .005		SIZE CODE IDENT. NO. DWG NO.				
MATERIAL		A		82679		ISSUE
FINISH		SCALE 1:1		SHEET		OF
DRAWN G.D.L		DATE		DATE		DATE
CHECKED		DATE		DATE		DATE
ELECT. DES.		DATE		DATE		DATE
MECH. DES.		DATE		DATE		DATE
FINAL APPROVAL		DATE		DATE		DATE

NOTICE TO PERSONS RECEIVING THIS DRAWING
 THE TECHNICAL MATERIEL CORPORATION claims proprietary right in the material disclosed hereon. This drawing is issued in confidence for engineering information only and may not be reproduced or used to manufacture anything shown hereon without permission from THE TECHNICAL MATERIEL CORPORATION to the user. This drawing is loaned for mutual assistance and is subject to recall at any time.



1

DRILL

THE TECHNICAL MATERIEL CORPORATION MAMARONECK, NEW YORK 10543			
DATE	8 SEP 1992	DRAWN BY	APPROVED BY
SCALE	1.0 : 1.0	N dePASQUALE	F BUDETTI
CONNECTOR, RECEPT, AC			
USED ON	SPECIFICATION	DRAWING	REV
BSP-3		JJ-370	A

DRAFT