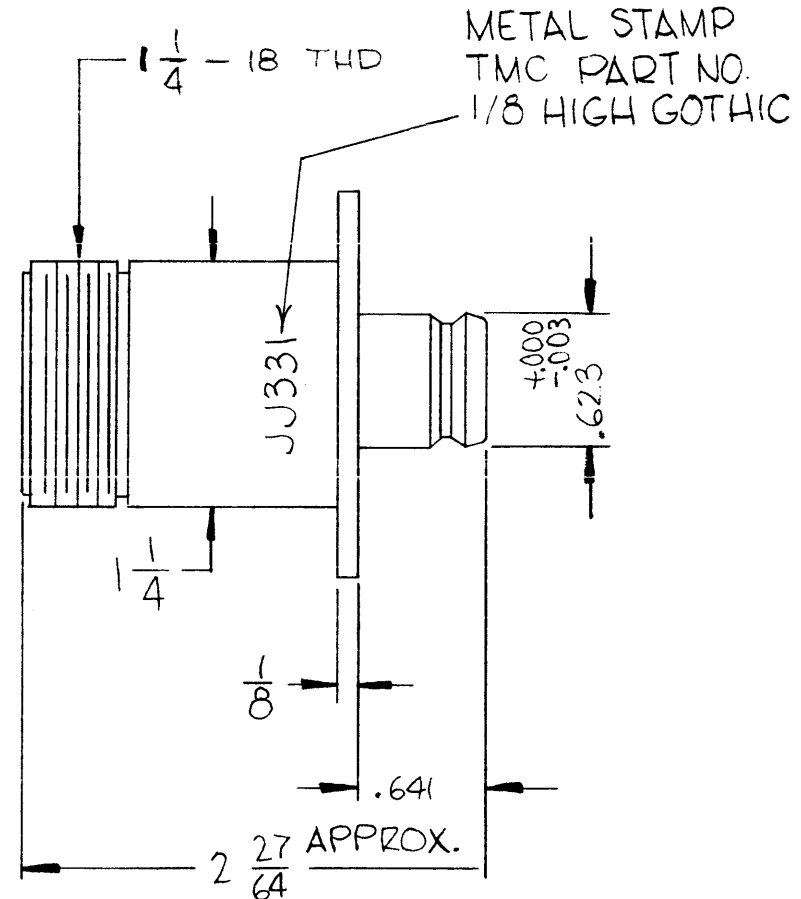
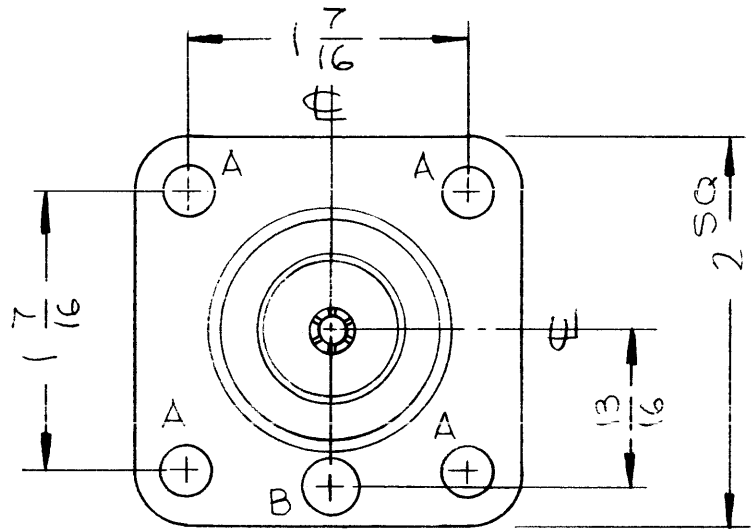


SYM	DESCRIPTION	DATE	E.M.N. NO.	DRAFT	CHKD	APPD
φ	ORIGINAL RELEASE FOR PRODUCTION	10/17/66	φ	CV		

JJ331



SPECIFICATIONS

SERIES: LC TO QDS  
 No OF CONTACTS: 1  
 TYPE OF CONTACT: FEMALE  
 DIELECTRIC: TEFLON

MATERIAL

EXTERNAL PARTS: BRASS  
 CONTACTS: BERYLLIUM COPPER

FINISH

EXTERNAL PARTS: SILVER PLATE & RHODIUM FLASH  
 CONTACTS: SILVER PLATE & GOLD FLASH

HOLE	DESCRIPTION	REQ
A	.257 DIA	4
B	9/32 DIA	1

QDP9C254		
Q'TY./UNIT	MODEL USED ON	ASS'Y. NO.
SCALE	CODE	S401-70(3931)
THE CONTENTS OF THIS DRAWING ARE THE EXCLUSIVE PROPERTY OF THE TECHNICAL MATERIEL CORP. ITS UNAUTHORIZED USE OR REPRODUCTION IN WHOLE OR IN PART IS STRICTLY FORBIDDEN.		

REQ'D.	ITEM	PART NUMBER	DESCRIPTION	SYMBOL
<b>LIST OF MATERIAL</b>				
MATERIAL		<b>THE TECHNICAL MATERIEL CORP. MAMARONECK, NEW YORK</b>		
FINISH		TITLE ADAPTOR, CONNECTOR "LC" (F) TO "QDS" (F)		
UNLESS OTHERWISE SPECIFIED DIMENSIONS ARE IN INCHES AND INCLUDE CHEMICALLY APPLIED OR PLATED FINISHES		DRAWN <i>WHL</i>	DATE 9.29.66	FINAL APPROVAL <i>[Signature]</i>
DECIMALS .X ± .05 .XX ± .01 .XXX ± .005		CHECKED <i>[Signature]</i>	DATE	DATE 10/17/66
FRACTIONS ± 1/64 ANGLES ± 0° 30'		ELECT. DES. <i>[Signature]</i>	DATE 10-19-66	
TOLERANCES		MECH. DES. <i>[Signature]</i>	DATE 10-17-66	
		W/L <i>[Signature]</i>	DATE 10-17-66	

**NOTES**