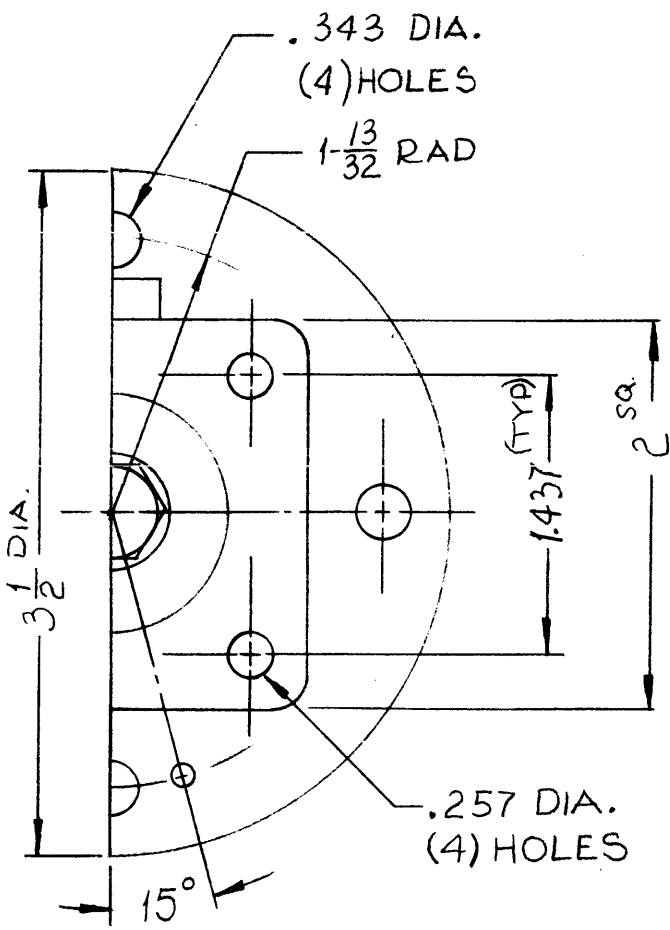
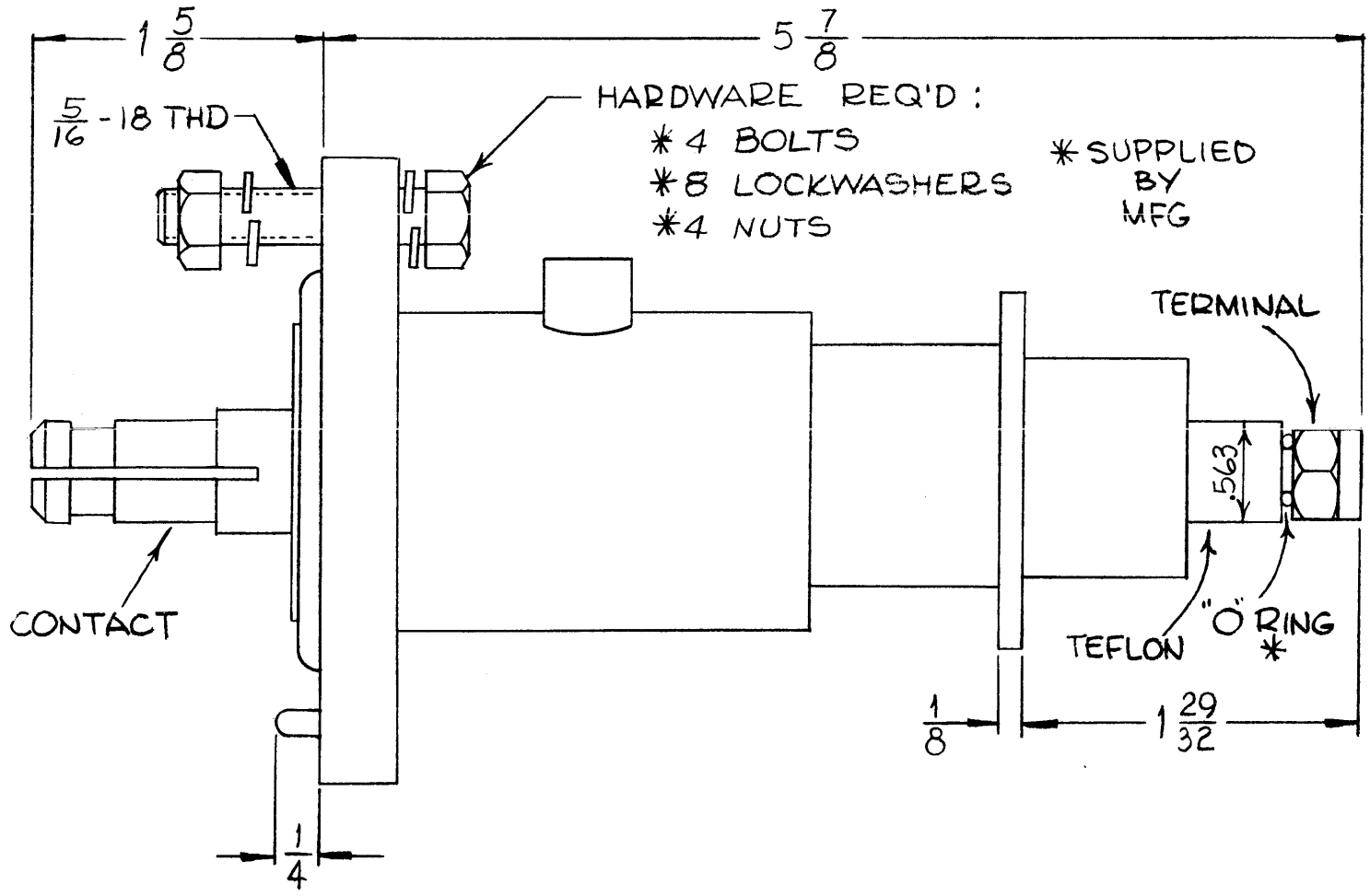


JJ329

REVISIONS

SYM	DESCRIPTION	DATE	E.M.N. NO.	DRAFT	CHKD	APPD
Ø	ORIGINAL RELEASE FOR PRODUCTION	1-9-67		W40		



SPECIFICATIONS

SERIES: E1A
 NO. OF CONTACTS: 1
 TYPE OF CONTACT: MALE
 DIELECTRIC: TEFLON

ELECTRICAL DATA

MAX PEAK VOLTAGE: 10,000
 FREQ. LIMIT: 1,000 MCS
 NOM IMPEDANCE: 50 Ω ONLY

MATING ACCOMMODATIONS

TYPE: E1A 51625

MATERIAL

EXTERNAL PARTS: BRASS
 TERMINAL: BRASS
 CONTACT: PHOSPHOR, BRONZE

FINISH

EXTERNAL PARTS: SILVER PLATE & RHODIUM
 CONTACT: NICKEL PLATE
 TERMINAL: SILVER PLATE & GOLD FLASH

*SUPPLIED BY MFGR

SCREW MACHINE-	SCH3118NR24	4 REQ
WASHER, LOCK, SPLIT-	LWS 31MR	8 REQ
NUT, HEXAGON-	NTH-3118NR16	4 REQ

REQ'D.	ITEM	PART NUMBER	DESCRIPTION	SYMBOL
--------	------	-------------	-------------	--------

OCTAVIO (CON. PROD) LIST OF MATERIAL

MATERIAL THE TECHNICAL MATERIEL CORP.
 MAMARONECK, NEW YORK

FINISH TITLE ADAPTOR CONNECTOR
 1 5/8" 50R EIA (END SEAL)

UNLESS OTHERWISE SPECIFIED DIMENSIONS ARE IN INCHES AND INCLUDE CHEMICALLY APPLIED OR PLATED FINISHES		DRAWN W40	DATE 4-18-66	FINAL APPROVAL	DATE 1/9/67
DECIMALS .X ± .05 .XX ± .01 .XXX ± .005	FRACTIONS ± 1/64 ANGLES ± 0° 30'	CHECKED JCB	DATE 12/5/66	JJ329	Ø
TOLERANCES		ELECT. DES. JC	DATE	SHEET	REV. LTR.

NOTES

THE CONTENTS OF THIS DRAWING ARE THE EXCLUSIVE PROPERTY OF THE TECHNICAL MATERIEL CORP. ITS UNAUTHORIZED USE OR REPRODUCTION IN WHOLE OR IN PART IS STRICTLY FORBIDDEN.