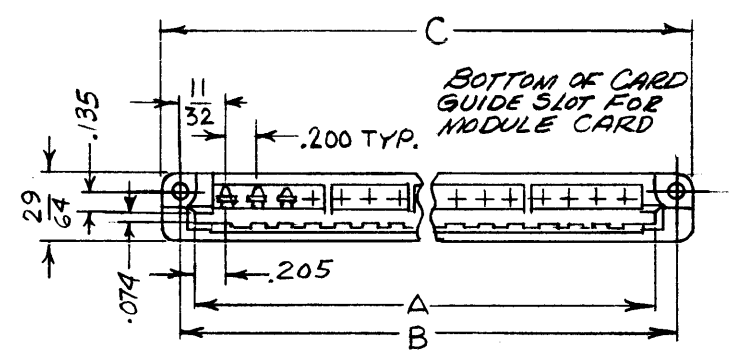


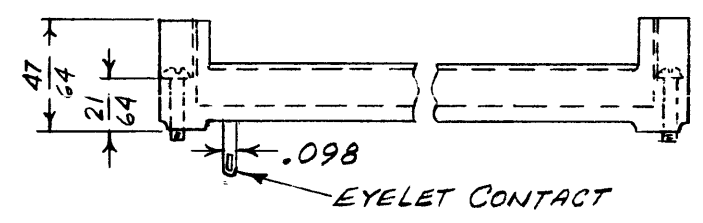
TMC PART No.	NO. OF CONTACTS	A ± .005	B ± .015	C MAX.	D	G*	N*
JJ323-12	12	2.610	2.880	3.150	2.440	C=.296 NC=.171	C=.125 NC=.062

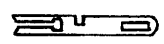
REVISIONS						
SYM	DESCRIPTION	DATE	E.M.N. NO.	DRAFT	CHKD	APPD
Ø	ORIGINAL RELEASE FOR PRODUCTION	6-15-65		JC		

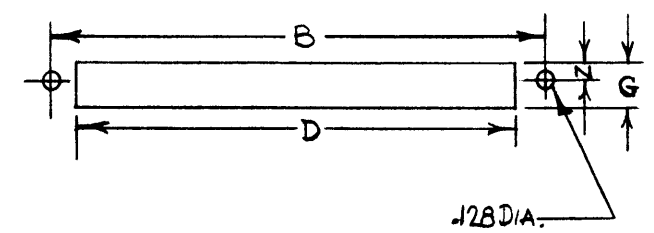
JJ 323



*** NOTE:**
C = CONDUCTIVE CHASSIS
 (.125 CLEARANCE AROUND CONTACTS)
NC = NON-CONDUCTIVE CHASSIS
 (.062 CLEARANCE AROUND CONTACTS)



TYPE OF CONTACT:
 .098 BASE TAPER TAB W/WIRE HOLE

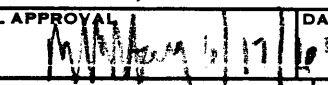
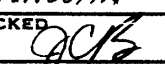
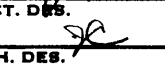


CHASSIS LAYOUT

SPECIFICATIONS

CURRENT RATING: 10 AMPERES
 CONTACT RESISTANCE: 0.005 OHM, MAXIMUM
 CONTACT MATERIAL AND PLATING: PHOSPHOR BRONZE PER QQ-B-750, COMPOSITION A. + NICKEL PLATED, 30 TO 150 MICROINCHES, FOLLOWED BY GOLD FLASH, 10 TO 20 MICROINCHES.
 INSULATOR MATERIAL: DIALYL PHTHALATE, GLASS FILLED, PER MIL-M-14F, TYPE SDG.
 INSULATION RESISTANCE: 25,000 MEGOHMS, MINIMUM.
 DIELECTRIC WITHSTANDING VOLTAGE (AT 52% RELATIVE HUMIDITY):
 SEA LEVEL: 2500 VOLTS RMS
 3.4" HG: 675 VOLTS RMS
 WITHDRAWAL FORCE: 8 OUNCES PER CONTACT, AVERAGE
 MILITARY SPECIFICATION:
 MIL-C-21097 (BU. SHIPS) APPLICABLE PORTIONS
 MIL-E-19600 (BU. WEPS) PARAGRAPH 3.5.5
 † TERMINALS: EYELET

STANDARD DRAWING

REQ'D.	ITEM	PART NUMBER	DESCRIPTION	SYMBOL
LIST OF MATERIAL				
MATERIAL		THE TECHNICAL MATERIEL CORP. MAMARONECK, NEW YORK		
FINISH		TITLE CONNECTOR, RECEPTACLE PRINTED CKT BOARD 1/16		
UNLESS OTHERWISE SPECIFIED DIMENSIONS ARE IN INCHES AND INCLUDE CHEMICALLY APPLIED OR PLATED FINISHES		DRAWN H. AUSTIN	DATE 6-14-65	FINAL APPROVAL 
DECIMALS .X ± .05 .XX ± .01 .XXX ± .005		CHECKED 	DATE 6-15-65	DATE 6-16-65
FRACTIONS ± 1/64 ANGLES ± 0° 30'		ELECT. DES. 	DATE 6-16-65	DATE
TOLERANCES		MECH. DES.	DATE	DATE
THE CONTENTS OF THIS DRAWING ARE THE EXCLUSIVE PROPERTY OF THE TECHNICAL MATERIEL CORP. ITS UNAUTHORIZED USE OR REPRODUCTION IN WHOLE OR IN PART IS STRICTLY FORBIDDEN.		JJ 323		Ø
NOTES		SHEET		REV. LTR.

Q'TY./UNIT	MODEL USED ON	ASS'Y. NO.
SCALE	CODE C	S401-379 (5007 SERIES)