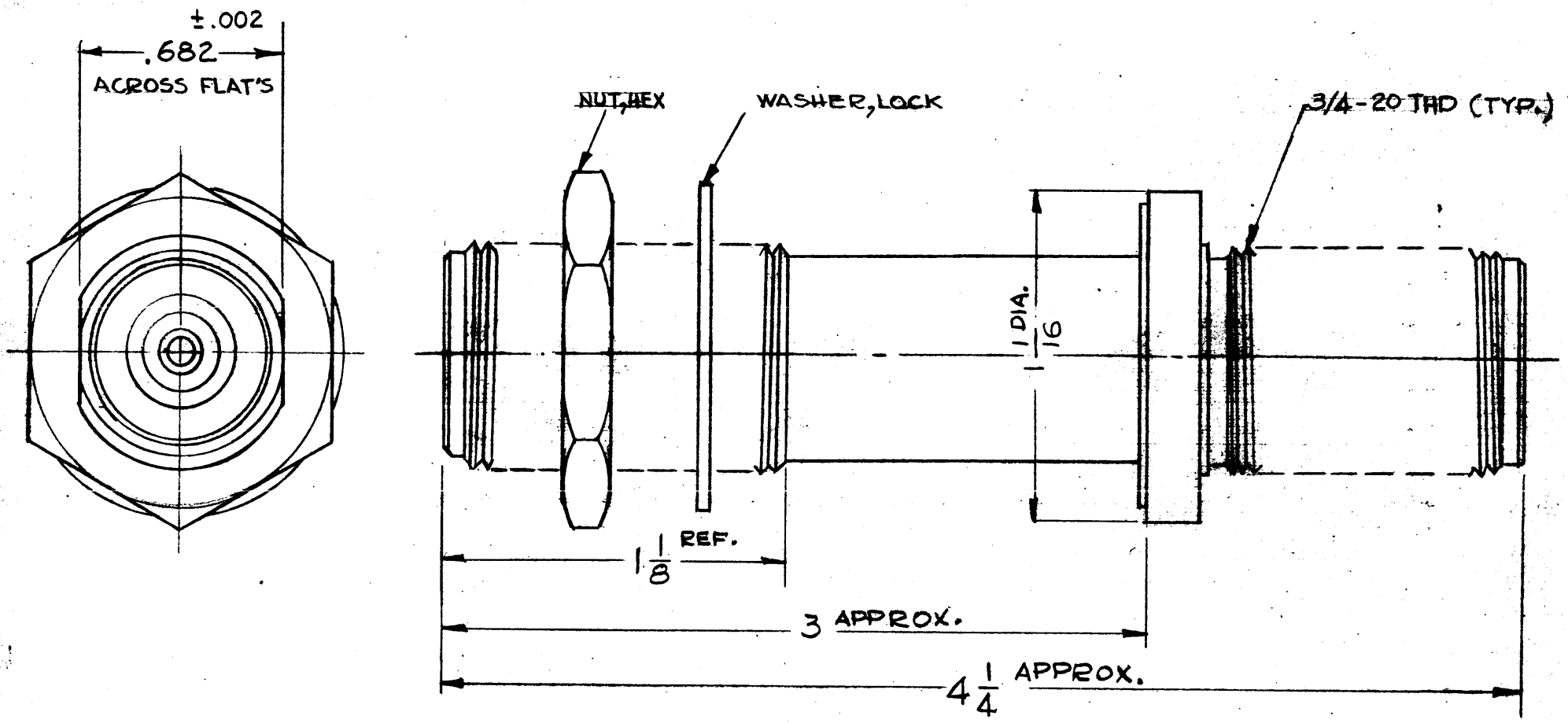


# STANDARD DRAWING

JJ320

REVISIONS						
SYM	DESCRIPTION	DATE	E.M.N. NO.	DRAFT	CHKD	APPD
X	EXP. RELEASE	10-8-64		G.D.L		
Ø	ORIGINAL RELEASE FOR PRODUCTION	11-2-64	Ø	JZ		



## SPECIFICATIONS

QUANTITY OF CONTACTS: 1 EACH END  
 MATING ENDS: 2

CONTACT DATA:  
 QUANTITY OF IDENTICAL CONTACTS: 2-ONE EACH END  
 TYPE: FEMALE/FEMALE  
 STYLE: ROUND  
 VOLTAGE RATING: 5KV PK  
 IMPEDANCE: 50 OHMS  
 MATERIAL & FINISH: BERYLLIUM COPPER, SILVER PLATE GOLD FLASH.  
 DIELECTRIC: TEFLON  
 BODY MAT'L & FINISH: BRASS SILVER PLATE RODIUM FLASH.  
 TYPE LOCKING: SCREW  
 TYPE THREAD: EXTERNAL  
 THREAD SIZE: 3/4-20

# STANDARD DRAWING

REQ'D.	ITEM	PART NUMBER	DESCRIPTION	SYMBOL
LIST OF MATERIAL				
MATERIAL		SEE SPECS.	THE TECHNICAL MATERIEL CORP. MAMARONECK, NEW YORK	
FINISH		SEE SPECS.	TITLE ADAPTER, BULKHEAD HN	
UNLESS OTHERWISE SPECIFIED DIMENSIONS ARE IN INCHES AND INCLUDE CHEMICALLY APPLIED OR PLATED FINISHES			DRAWN G.D.L	DATE 10-8-64
			CHECKED @	DATE 10-12-64
			ELECT. DES. JZ	DATE 11/2/64
			MECH. DES.	DATE
			FINAL APPROVAL JJ320	
			SHEET	
			REV. LTR.	

STANDARD		
QTY./UNIT	MODEL USED ON	ASSY. NO.
DO NOT SCALE	C	5401-70 (2989)

THE CONTENTS OF THIS DRAWING ARE THE EXCLUSIVE PROPERTY OF THE TECHNICAL MATERIEL CORP. ITS UNAUTHORIZED USE OR REPRODUCTION IN WHOLE OR IN PART IS STRICTLY FORBIDDEN.

DECIMALS	TOLERANCES	FRACTIONS
.X ± .05		± 1/64
.XX ± .01		ANGLES
.XXX ± .005		± 0° 30'

## NOTES