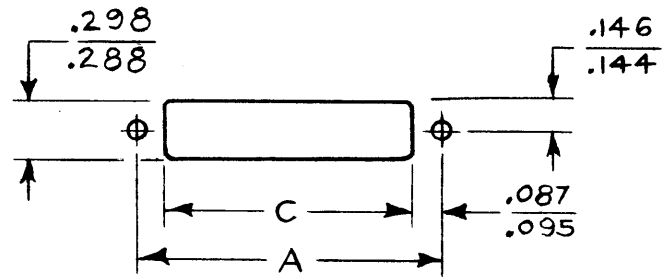
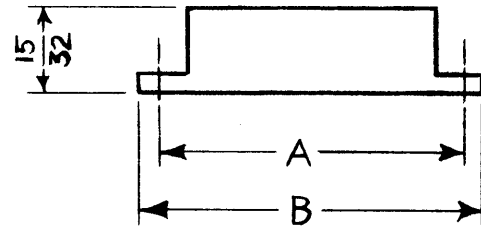
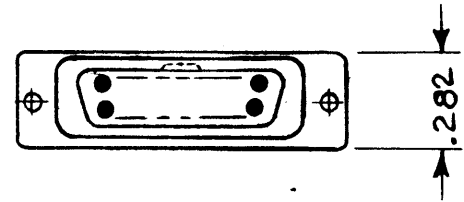


| TMC P/N | MFG P/N | MFG P/N CABLE CLAMP | A | B | C | MATES WITH | NO. OF CONTACTS |
|----------|---------|------------------------|-------|-------|-------|------------|-----------------|
| JJ-308-1 | 223-2 | NONE | .593 | .843 | .410 | PL-241-1 | 5 |
| JJ-308-2 | 223-6 | NONE | 1.193 | 1.443 | 1.015 | PL-241-2 | 17 |

JJ-308 A

| REVISIONS | | | | | |
|-----------|---|----------|------------|-------|-----------|
| SYM | DESCRIPTION | DATE | E.M.N. NO. | DRAFT | CHKD APPD |
| 0 | ORIGINAL RELEASE FOR PRODUCTION | 8.3.64 | + | WB | |
| A | ON CHART IT-2 & NO. OF CONTACTS COLMN. ADDED. | 10.22.64 | 12687 | SP | @ JX |

- SPECS:
- Quantity of Contacts: See Chart
 - Quantity of Mating ends: 1
 - Contact data
 - Quantity of identical Contacts: SEE CHART
 - type: male
 - style: Round pin
 - Current Rating: 3 AMP
 - Voltage Rating: 375 V RMS
 - Contact Connected to shell: No
 - Contact Wired for ext. Grd: No
 - Material: Copper
 - Finish: Gold Plate
 - Dielectric Material: L exam
 - Shell data
 - type: Inclosed
 - Material: L exam
 - Corrosion Resistant: yes
 - Polorization
 - type: Shell shape
 - Locking type: Snap lock
 - Cable accomodation data
 - Max.cable size: 3/16"
 - Wire size: #22
 - Clamp: yes



CUTOUT OF MOUNTING

STANDARD DRAWING

| | | |
|------------|---------------|------------|
| LFSA-1 | | |
| Q'TY./UNIT | MODEL USED ON | ASS'Y. NO. |
| SCALE | CODE | S401-71 |

NOTES

THE CONTENTS OF THIS DRAWING ARE THE EXCLUSIVE PROPERTY OF THE TECHNICAL MATERIEL CORP. ITS UNAUTHORIZED USE OR REPRODUCTION IN WHOLE OR IN PART IS STRICTLY FORBIDDEN.

| REQ'D. | ITEM | PART NUMBER | DESCRIPTION | SYMBOL |
|---|--|--|---|---|
| LIST OF MATERIAL | | | | |
| MATERIAL | | THE TECHNICAL MATERIEL CORP. MAMARONECK, NEW YORK | | |
| FINISH | | TITLE CONNECTOR, MICRO-MINIATURE FEMALE | | |
| UNLESS OTHERWISE SPECIFIED DIMENSIONS ARE IN INCHES AND INCLUDE CHEMICALLY APPLIED OR PLATED FINISHES | | DRAWN <i>N. Peters</i> CHECKED <i>@</i> | DATE 7-9-69 DATE 7-9-64 DATE 7-8-64 | FINAL APPROVAL <i>RT</i> JJ-308 SHEET |
| DECIMALS .X ± .05 .XX ± .01 .XXX ± .005 | TOLERANCES ± 1/64 ANGLES ± 0° 30' | ELECT/DES MECH/DES | DATE 7-9-64 DATE 7-8-64 | REV. LTR. A |