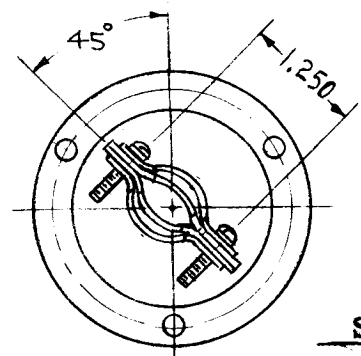
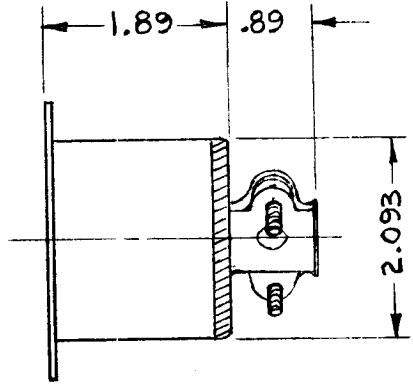
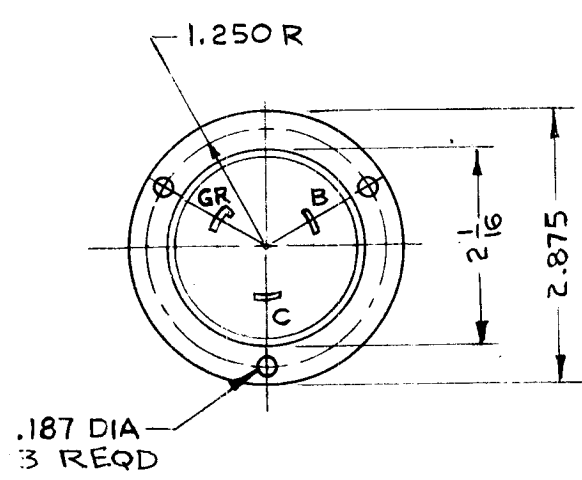


TMC PART NO.	MFRS PART NO.	GROUND SHUNT
JJ-297-1	3336	NONE
JJ-297-2	3336 G	WITH GROUND SHUNT

REQ. PER UNIT	USED ON		
	MODEL	ASS'Y. NO.	DATE
1	RAK-31A		10-9-63

JJ 297  $\emptyset$



SPECIFICATIONS

1. QUANT. OF CONTACTS: 3
2. QUANT. OF MATING ENDS: 1
3. CONTACT DATA:
  - a) QUAN. OF IDENTICAL CONTACTS: 2
  - b) TYPE: MALE
  - c) STYLE: BLADE
  - d) CURRENT RATING: 30A
  - e) VOLTAGE RATING: 250 VAC/DC
  - f) GROUNDING OF CONTACT: GROUND CONTACT MAY BE CONNECTED TO SHELL
  - g) MATERIAL: BRASS
4. DIELECTRIC MATERIAL: BAKELITE
5. SHELL: a) MATERIAL: BRASS & STEEL  
b) FINISH: SHELL: CAD. FACE: NICKEL
6. POLARIZATION: CONTACT SHAPE
7. LOCKING: TWIST
8. CABLE ACCOMMODATION: MAX. SIZE: .625-1.000
9. MATES WITH: PL-190

SYM	DESCRIPTION	DATE	CH. NO.	DRAFTS	CHECKER	ENG. APP.	REQ. ITEM	PART NO.	I. JOHNSON	DESCRIPTION	SYMBOL	
$\emptyset$	ORIGINAL RELEASE FOR PRODUCTION	12-9-64	$\emptyset$	92						THE TECHNICAL MATERIEL CORP. MAMARONECK. NEW YORK		
X <sub>1</sub>	JJ-297-2 WAS JJ-297-WG	12/29/63								RECEPTACLE, CONNECTOR,		
	JJ-297-1 WAS JJ-297-NG									30 A, POLARIZED		
	UNLESS OTHERWISE SPECIFIED DIMENSIONS ARE IN INCHES AND INCLUDE CHEMICALLY APPLIED OR PLATED FINISHES	SCALE	1/2									
	DECIMALS .X $\pm$ .05 .XX $\pm$ .01 .XXX $\pm$ .005	FRACTIONS $\pm$ 1/64 ANGLES $\pm$ 0° 30'	CODE	S-401-43								
	TOLERANCES						SEE SPEC					
							FINISH & SPEC. NO.				JJ 297 $\emptyset$	
									DRAWN	CHECKED	FINAL APPROVAL	