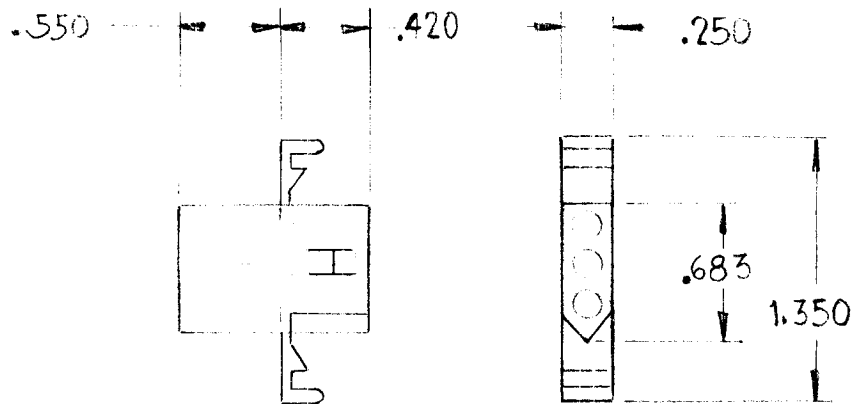


ISSUE	ITEM	CHANGED FROM	DATE	CH. NO.	DRAFTS	CHECKER	ENG. APP.	REQ.	ITEM	PART NO.	DESCRIPTION	SYMBOL
-------	------	--------------	------	---------	--------	---------	-----------	------	------	----------	-------------	--------

0 PROP RELEASE 3 DEC 73



MANUFACTURER:

CONN MOLEY # 1396-P E/W
 (3) PINS MOLEY # 1434TL

Stock No.
250066

STANDARD		—		3 DEC 73		TMC (Canada) LIMITED		OTTAWA ONTARIO			
MODEL	PROJECT NO.	ASSY. NO.	DATE	STOCK SIZE		CONNECTOR					
USED ON				MATERIAL	WEIGHT PER PC.	3 PIN PLUG					
MAXIMUM ALLOWABLE TOLERANCES HAVE BEEN DETERMINED AND DEVIATIONS WILL BE CAUSE FOR REJECTION REMOVE ALL BURRS AND SHARP EDGES		IF IT IS FOUND DESIRABLE TO CHANGE ANY TOLERANCE OR OTHER DETAIL SPECIFIED ON THIS DRAWING NOTIFY THE PURCHASER PROMPTLY.				TYPE & TEMPER		DRAWN		ELEC. DES. APP.	MECH. DES. APP.
TOLERANCES		SCALE 1:1		HEAT TREAT. SPEC.		CHECKED		FINAL APPROVAL			
ALL OTHERS	DEC. DIM. ± .X = .06 FRAC. DIM. ± 1/64 .XX = .01 ANGULAR DIM. ± 0° 30' .XXX = .005	DIMENSIONS IN INCHES UNLESS OTHERWISE SPECIFIED		FINISH & SPEC. NO.		JJ10030		0			
		DRILL: PUNCH. COMMERCIAL STOCK SIZES AND MANUFACTURERS TOLERANCES ARE NOT INCLUDED.									