

IF IT IS FOUND DESIRABLE TO CHANGE ANY TOLERANCE OR OTHER DETAIL SPECIFIED ON THIS DRAWING NOTIFY THE PURCHASER PROMPTLY.

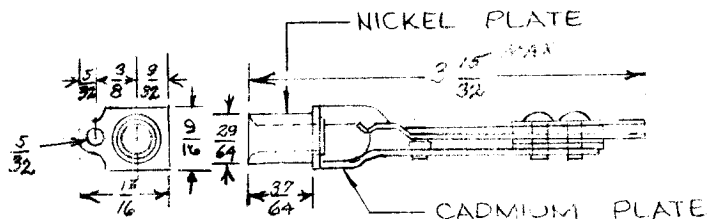
STANDARD DRAWING

JJ 116 C

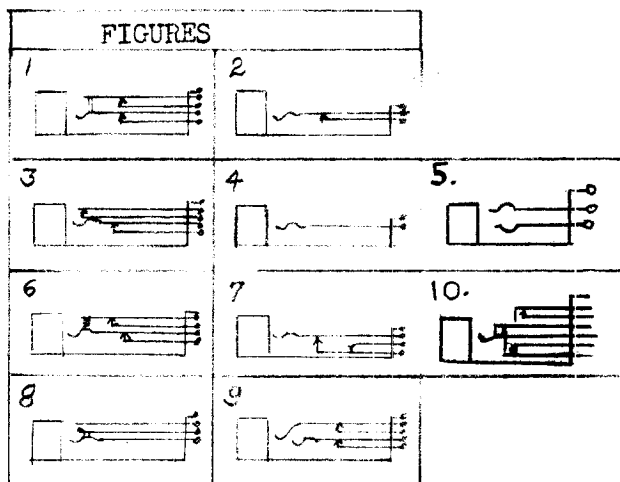
MAXIMUM ALLOWABLE TOLERANCES HAVE BEEN DETERMINED AND DEVIATIONS WILL BE CAUSE FOR REJECTION. REMOVE ALL BURRS AND SHARP EDGES

USED ON

MODEL PROJECT NO. ASS'Y. NO. DATE



TMC #	ADC #	FIGURE
JJ-116-1	PJ-116	1
JJ-116-2	PJ-318	2
JJ-116-3	PJ-125	3
JJ-116-4	PJ-123	4
JJ-116-5	PJ-238	5
JJ-116-6	PJ-117	6
JJ-116-7	PJ-203	7
JJ-116-8	PJ-115	8
JJ-116-9	PJ-638	9 Sleeve & Tip.
JJ-116-10	PJ-339	9 Sleeve, Tip & Ring.
JJ-116-11	PJ-338	10



Specifications:
 Frame; Steel,
 Springs; Nickel Silver.
 Contacts; Silver Alloy.
 Terminals; Tinned.

Dim. for Ref. Only
 Ref. Audio Development Co.

REQ.	ITEM	PART NO.	DESCRIPTION	SYMBOL
			THE TECHNICAL MATERIEL CORP. MAMARONECK. NEW YORK	
		STOCK SIZE		
			JACK-TELEPHONE, TYPE	
		MATERIAL	WEIGHT PER PC.	
		TYPE & TEMPER		
		HEAT TREAT. SPEC.		
		FINISH & SPEC. NO.		
			DRAWN	ELEC. DES. APP.
			CHECKED	FINAL APPROVAL
				JJ 116 C

ISSUE	ITEM	CHANGED FROM	DATE	CN. NO.	DRAFTS	CHECKER	ENG. APP.
C		JJ116-11 & FIG 10 ADD	7-9-75	21232	G.D.L.		
B		NICKEL & CADMIUM PL ADD	6.20.66	16431	WHD		
A	1	JJ116-5 & FIG. 5 Added	3-27-61	4493	MAF		

TOLERANCES		SCALE
ALL OTHERS	DEC. DIM. ± FRAC. DIM. ± ANGULAR DIM. ±	DRILL, PUNCH, COMMERCIAL STOCK SIZES AND MANUFACTURERS TOLERANCES ARE NOT INCLUDED.