

THE CONTENTS OF THIS DRAWING ARE THE EXCLUSIVE PROPERTY OF THE TECHNICAL MATERIEL CORP. ITS UNAUTHORIZED USE FOR REPRODUCTION IN WHOLE OR IN PART IS STRICTLY FORBIDDEN.

REQ. PER UNIT

1

USED ON

ASSY. NO.

MODEL

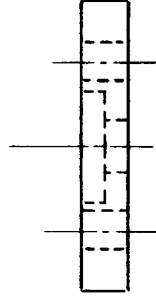
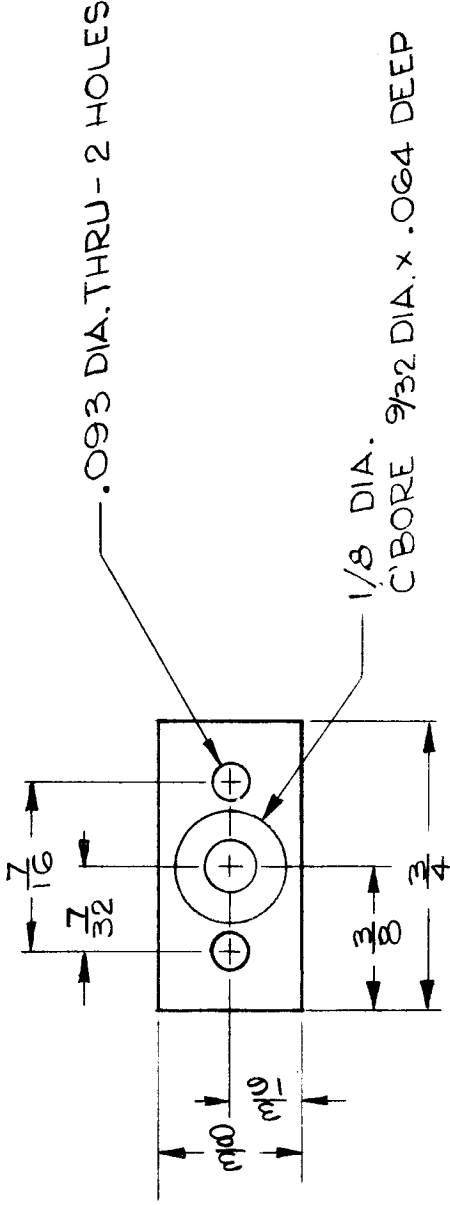
GPR-92

DATE

6-18-63

AX-428

IM-216



UNLESS OTHERWISE SPECIFIED DIMENSIONS ARE IN INCHES AND INCLUDE CHEMICALLY APPLIED OR PLATED FINISHES

FRACTIONS ± 1/64 ANGLES ± 0° 30'

DECIMALS .X ± .05 .XX ± .01 .XXX ± .005

TOLERANCES

SCALE 2:1

DATE

CH. NO.

DRAFTS

CHECKER

ENG. APP.

SYM	DESCRIPTION	DATE	CH. NO.	DRAFTS	CHECKER	ENG. APP.

REQ. ITEM	PART NO.	DESCRIPTION	SYMBOL
1/8		THE TECHNICAL MATERIEL CORP. MAMARONECK. NEW YORK	
		INSULATOR	
		PHENOLIC	
		MATERIAL	
		XXP	
		NATURAL	
		FINISH & SPEC. NO.	

DRAWN: JMA
CHECKED: JMA
DATE: 7/8/63
FINAL APPROVAL: JFH 7.8.63