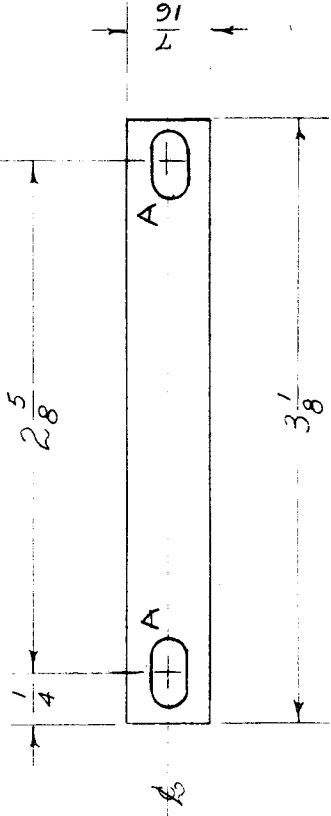


IF IT IS FOUND DESIRABLE TO CHANGE ANY TOLERANCE OR OTHER DETAIL SPECIFIED ON THIS DRAWING NOTIFY THE PURCHASER PROMPTLY.

MAXIMUM ALLOWABLE TOLERANCES HAVE BEEN DETERMINED AND DEVIATIONS WILL BE CAUSE FOR REJECTION. REMOVE ALL BURRS AND SHARP EDGES



A ~ 11/64 X 11/32 SLOTS 2 REQ.

IM-154 A

USED ON	
REQ. PER UNIT	PROJECT NO.
2	
MODEL	ASSY. NO.
CFA	
	DATE
	1-25-53

ISSUE ITEM	CHANGED FROM	DATE	CN. NO.	DRAFTS CHECKER	ENG. APP.
A 1	SLOTS WERE 1/64 P. HOLES	9-14-60	2941	WS	

TOLERANCES SCALE  
 DEC. DIM. ±  
 FRAC. DIM. ±  
 OTHERS ANGULAR DIM. ±  
 DRILL, PUNCH, COMMERCIAL STOCK SIZES AND MANUFACTURERS TOLERANCES ARE NOT INCLUDED.

REQ. ITEM	PART NO.	DESCRIPTION	SYMBOL
	.015	THE TECHNICAL MATERIEL CORP.	
		MAMARONECK, NEW YORK	
		TERMINAL BOARD #5	
		FISH PAPER - CFA	
		P.B.	
		DRAWN	ELEC. DES. APP.
		CHECKED	MECH. DES. APP.
			FINAL APPROVAL
			IM-154
			A