

IF IT IS FOUND DESIRABLE TO CHANGE ANY TOLERANCE OR OTHER DETAIL SPECIFIED ON THIS DRAWING NOTIFY THE PURCHASER PROMPTLY.

MAXIMUM ALLOWABLE TOLERANCES HAVE BEEN DETERMINED AND DEVIATIONS WILL BE CAUSE FOR REJECTION. REMOVE ALL BURRS AND SHARP EDGES

USED ON

REQ. PER UNIT
1

MODEL
CFA

PROJECT NO.

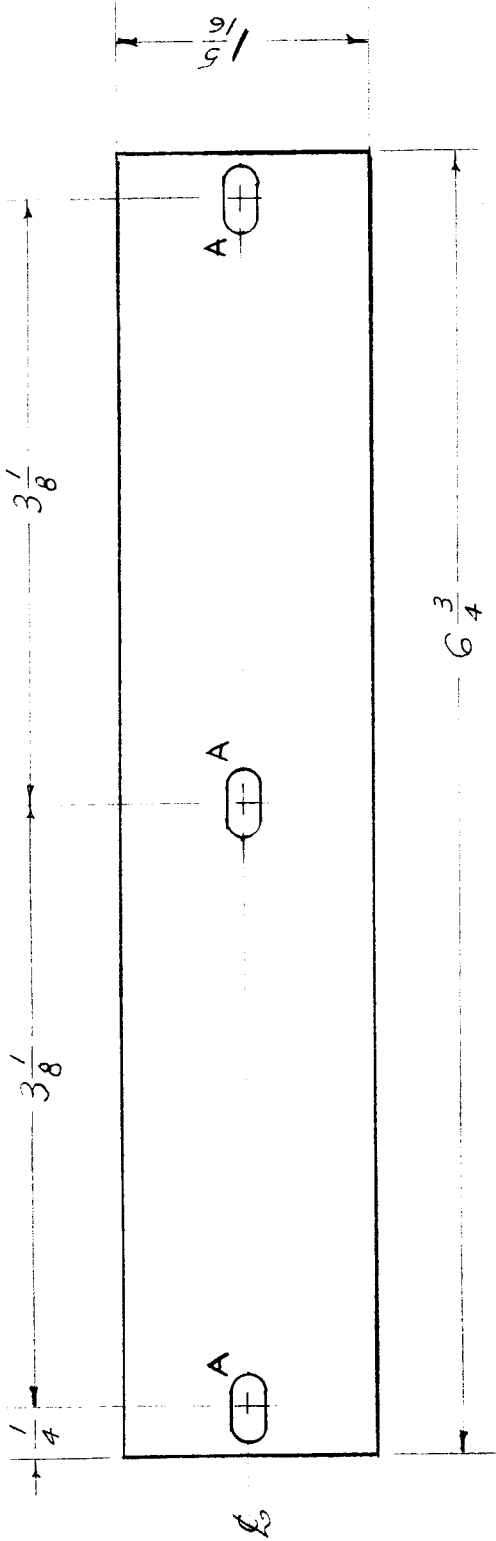
ASSY. NO.

DATE
4-22-55

IM-152

A

A $\sim \frac{11}{64} \times \frac{11}{32}$ SLOTS 3 REQ.



ISSUE	ITEM	CHANGED FROM	DATE	CN. NO.	DRAFTSCHECKER	ENG. APP.
A	1	"A" SLOTS WERE $\frac{11}{64}$ D HOLES	9-14-60	2941	CS	<i>[Signature]</i>
TOLERANCES						
SCALE						
DRILL, PUNCH, COMMERCIAL STOCK SIZES AND MANUFACTURERS TOLERANCES ARE NOT INCLUDED.						
DEC. DIM. \pm						
ALL OTHERS FRAC. DIM. $\pm \frac{1}{64}$						
ANGULAR DIM. \pm						

REQ. ITEM	PART NO.	DESCRIPTION	SYMBOL
.015		THE TECHNICAL MATERIEL CORP.	
STOCK SIZE		MAMARONECK. NEW YORK	
FISH PAPER	#	TERMINAL BOARD #8	
MATERIAL	WEIGHT PER PC.	FISH PAPER - CFA	
TYPE & TEMPER		PP 4-26-55	
		DRAWN	MECH. DES. APP. <i>[Signature]</i>
		CHECKED	MECH. DES. APP. <i>[Signature]</i>
HEAT TREAT. SPEC.			FINAL APPROVAL
			IM-152
FINISH & SPEC. NO.			A