

RELEASED

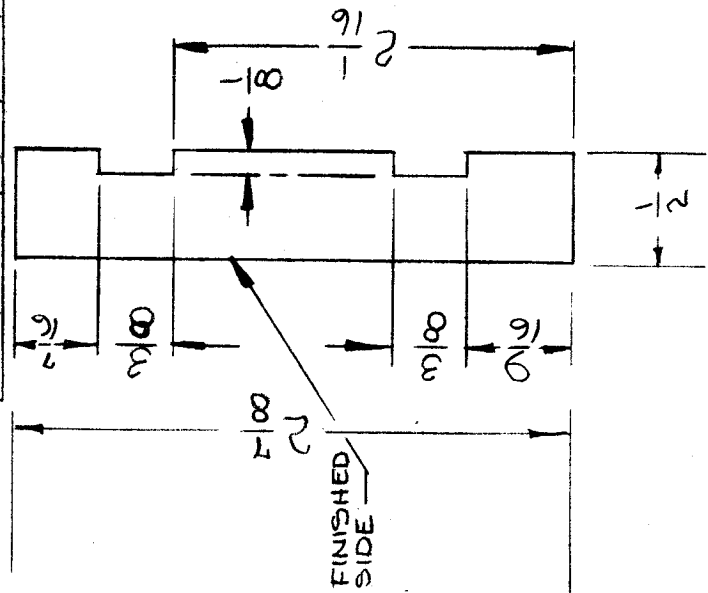
IF IT IS FOUND DESIRABLE TO CHANGE ANY TOLERANCE OR OTHER DETAIL SPECIFIED ON THIS DRAWING NOTIFY THE PURCHASER PROMPTLY.

MAXIMUM ALLOWABLE TOLERANCES HAVE BEEN DETERMINED AND DEVIATIONS WILL BE CAUSE FOR REJECTION. REMOVE ALL BURRS AND SHARP EDGES

IM-103 B

USED ON	
AMT. PER UNIT	PROJECT NO.
2	
1	109

MODEL	ASS'Y. NO.	DATE
XFK	A-600 A-627	7-3-51
LFA	A-147	9-20-52
FSS GPE-1		8-4-56 6-7-61



* 2 7/8

REF. JOHNS MANVILLE CO.

REQ. ITEM	PART NO.	DESCRIPTION	SYMBOL
1/2 THICK		THE TECHNICAL MATERIEL CORP. MAMARONECK, NEW YORK	
BUILDING BOARD		INSULATION, XTAL OVEN SIDE	
MATERIAL		LEFT	
STOCK SIZE			
WEIGHT PER PC.			
TYPE & TEMPER			
HEAT TREAT. SPEC.			
FINISH & SPEC. NO.			

ISSUE ITEM	CHANGED FROM	DATE	CN. NO.	DRAFTS CHECKER	ENG. APP.
B	2 GROOVES ADDED	7/11/66	16524	W40	[Signature]
A	2 7/8 * WAS	2/5/56	1	JAN	[Signature]

SCALE FULL

TOLERANCES

DEC. DIM. ± 1/64
 FRAC. DIM. ± 1/64
 ANGULAR DIM. ±

DRILL, PUNCH, COMMERCIAL STOCK SIZES AND MANUFACTURERS TOLERANCES ARE NOT INCLUDED.

DRAWN	ELEC. DES. APP.	MECH. DES. APP.
C.D.O. 9-12-52	A.T.J.	[Signature]
10/20 WCC		
CHECKED		
SUPERCEDES		
AMS-148-A		
FINAL APPROVAL		
IM-103		