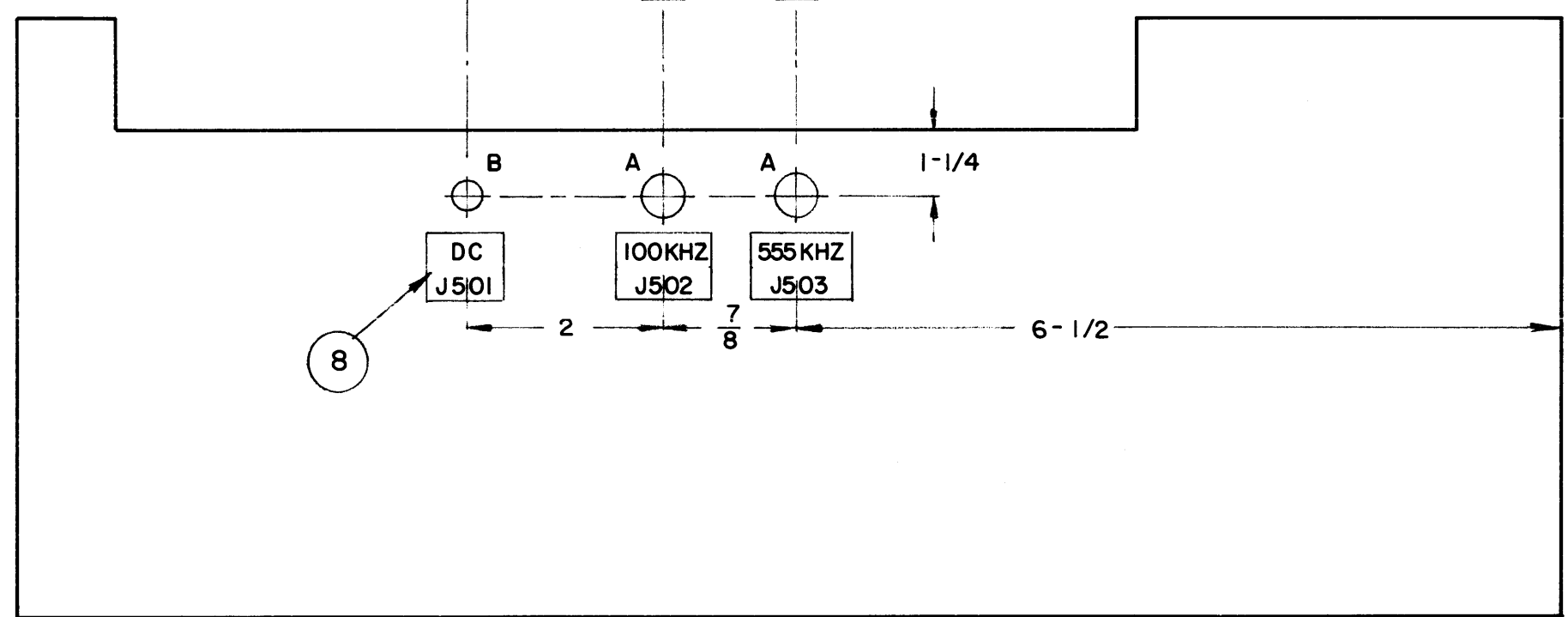
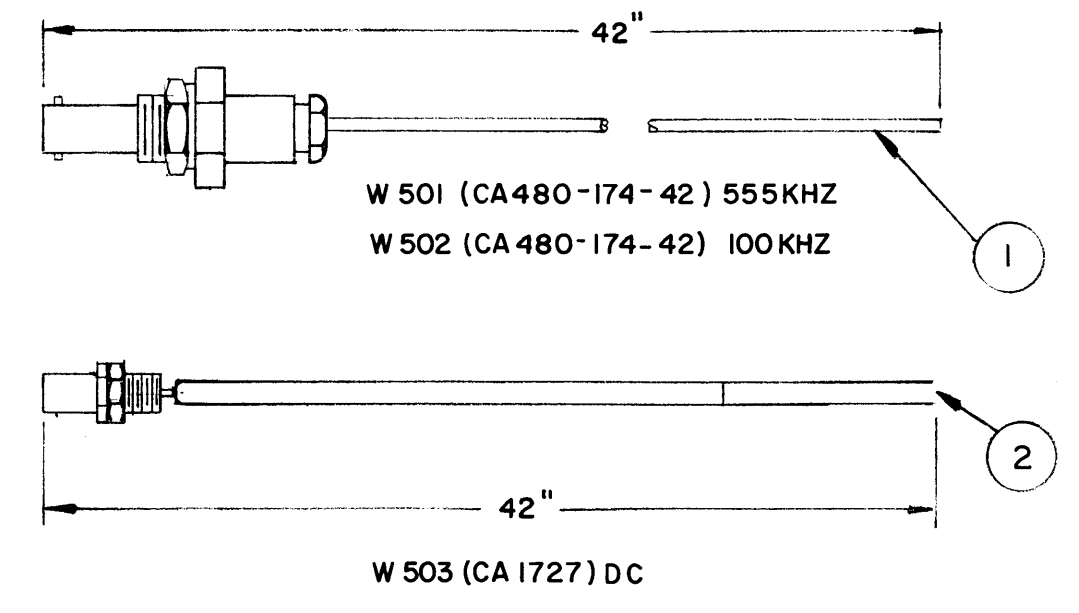
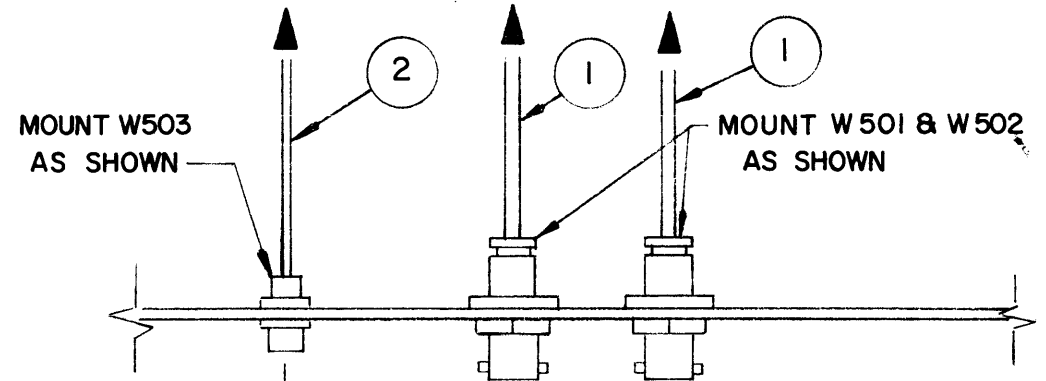


REVISIONS							
E.M.N. NO.	DRAFT	CHKD	ZONE	LTR	DESCRIPTION	DATE	APPROVED
	CL			Ø	ORIGINAL RELEASE FOR PROD	3/23/73	



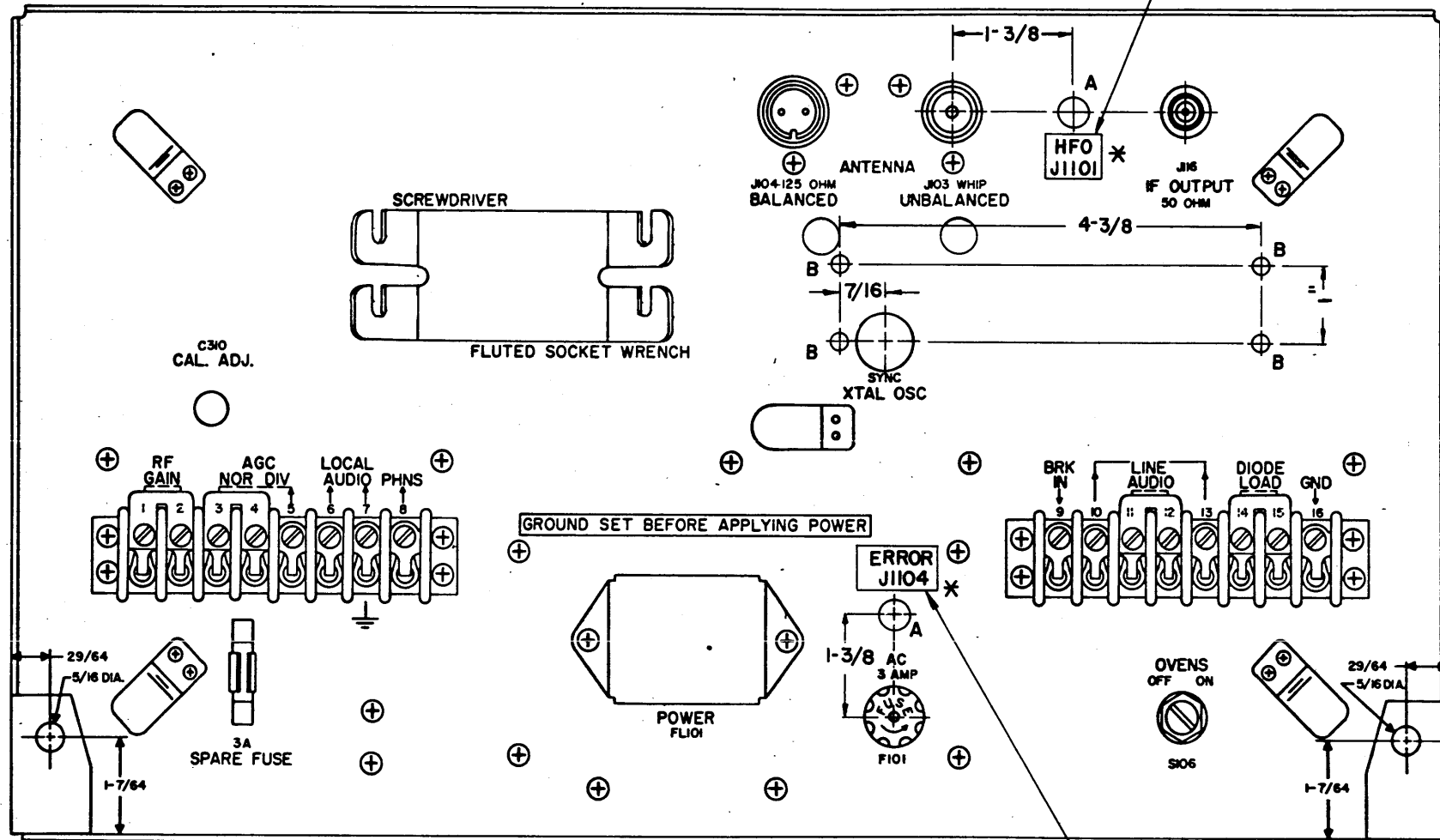
DRILLING PLAN REAR VIEW CV 157

HOLE A-1/2- 2 REQ
HOLE B-1/4- 1 REQ

REQ'D	ITEM	PART NUMBER	DESCRIPTION	SYM.
LIST OF MATERIAL				
THE TECHNICAL MATERIEL CORP. MAMARONECK, NEW YORK				
INSTALLATION DRAWING DRILLING PLAN, REAR CV 157/URR				
SIZE	CODE IDENT. NO.	DWG NO.	ISSUE	
B	82679	ID 407	Ø	
SCALE	SHEET		OF	

KIT 375		CV 157/URR
QTY / UNIT	MODEL USED ON	ASS'Y NO.
APPLICATION		
	CODE	
NOTICE TO PERSONS RECEIVING THIS DRAWING THE TECHNICAL MATERIEL CORPORATION claims proprietary right in the material disclosed hereon. This drawing is issued in confidence for engineering information only and may not be reproduced or used to manufacture anything shown hereon without permission from THE TECHNICAL MATERIEL CORPORATION to the user. This drawing is loaned for mutual assistance and is subject to recall at any time.		
UNLESS OTHERWISE SPECIFIED DIMENSIONS ARE IN INCHES AND INCLUDE CHEMICALLY APPLIED OR PLATED FINISHES		FINAL APPROVAL <i>[Signature]</i>
DECIMALS .X ± .05 .XX ± .01 .XXX ± .005		DATE 19 MAR 73
FRACTIONS 1/64 ANGLES 0°-30'		MECH. DES.
MATERIAL		ELECT. DES. <i>[Signature]</i>
FINISH		CHECKED
		DRAWN <i>GE</i>
		DATE 3/14/73

REVISIONS							
E.M.N. NO.	DRAFT	CHKD	ZONE	LTR	DESCRIPTION	DATE	APPROVED
	U			0	ORIG. RELEASE FOR PROD	9-29-79	



HOLE A - 1/2 DIA - 2 REQ
HOLE B - #40 DRILL - 4 REQ

NOTE
* DENOTES LABELS TO CLEAR CONNECTOR MTG HARDWARE

REFER TO FIG 12 TM11-856A

KIT 375		
QTY / UNIT	MODEL USED ON	ASS'Y NO.
APPLICATION		
CODE		

NOTICE TO PERSONS RECEIVING THIS DRAWING
THE TECHNICAL MATERIEL CORPORATION claims proprietary right in the material disclosed hereon. This drawing is issued in confidence for engineering information only and may not be reproduced or used to manufacture anything shown hereon without permission from **THE TECHNICAL MATERIEL CORPORATION** to the user. This drawing is loaned for mutual assistance and is subject to recall at any time.

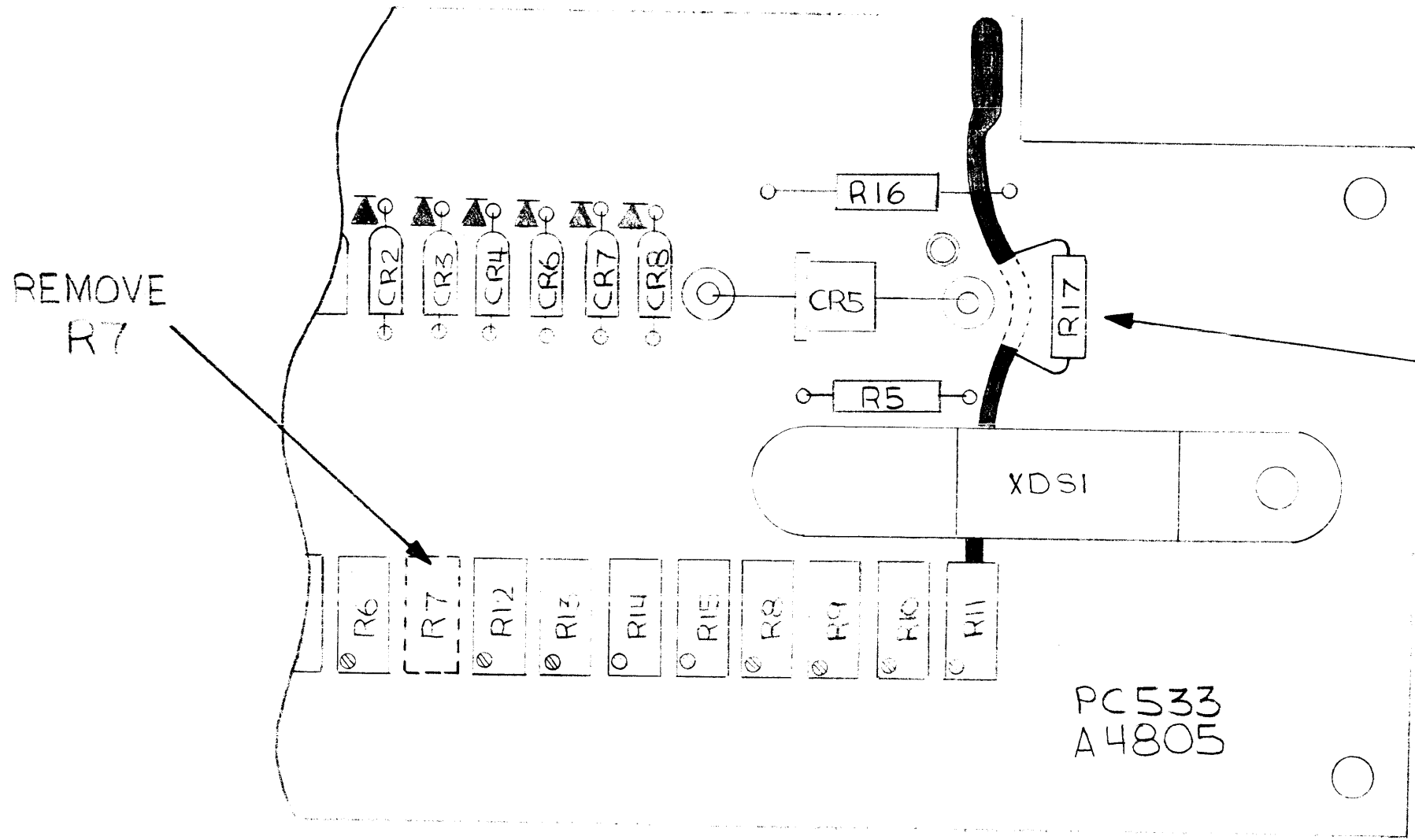
UNLESS OTHERWISE SPECIFIED DIMENSIONS ARE IN INCHES AND INCLUDE CHEMICALLY APPLIED OR PLATED FINISHES

DECIMALS	FRACTIONS
.X ± .05	1/64
.XX ± .01	TOLS. ANGLES
.XXX ± .005	0° - 30'

MATERIAL	FINISH

REQ'D	ITEM	PART NUMBER	DESCRIPTION	SYM.
F B LIST OF MATERIAL				
FINAL APPROVAL		DATE	THE TECHNICAL MATERIEL CORP.	
MECH. DES.		DATE	MAMARONECK, NEW YORK	
ELECT. DES.		DATE	INSTALLATION DRAWING	
CHECKED		DATE	REAR PANEL MODIFICATION	
DRAWN		DATE	R390A/URR	
SIZE	CODE IDENT. NO.	DWG NO.	ISSUE	
B	82679	ID 420		
SCALE		SHEET OF		

REVISIONS							
E.M.N. NO.	DRAFT	CHKD	ZONE	LTR	DESCRIPTION	DATE	APPROVED
	4/1			X	EXP. RELEASE	5-1-75	
	4/1			Ø	ORIGINAL	5-20-75	



CUT LAND AS ILLUSTRATED AND ADD RESISTOR R17 (SUPPLIED) ACROSS CUT SECTION OF LAND

REQ'D ITEM	PART NUMBER	DESCRIPTION	SYM.
LIST OF MATERIAL			
THE TECHNICAL MATERIEL CORP. MAMARONECK, NEW YORK INSTALLATION, KIT406 ASSEMBLY			
SIZE	CODE IDENT. NO.	DWG NO.	ISSUE
B	82679	ID428	Ø
SCALE 2:1		SHEET OF	

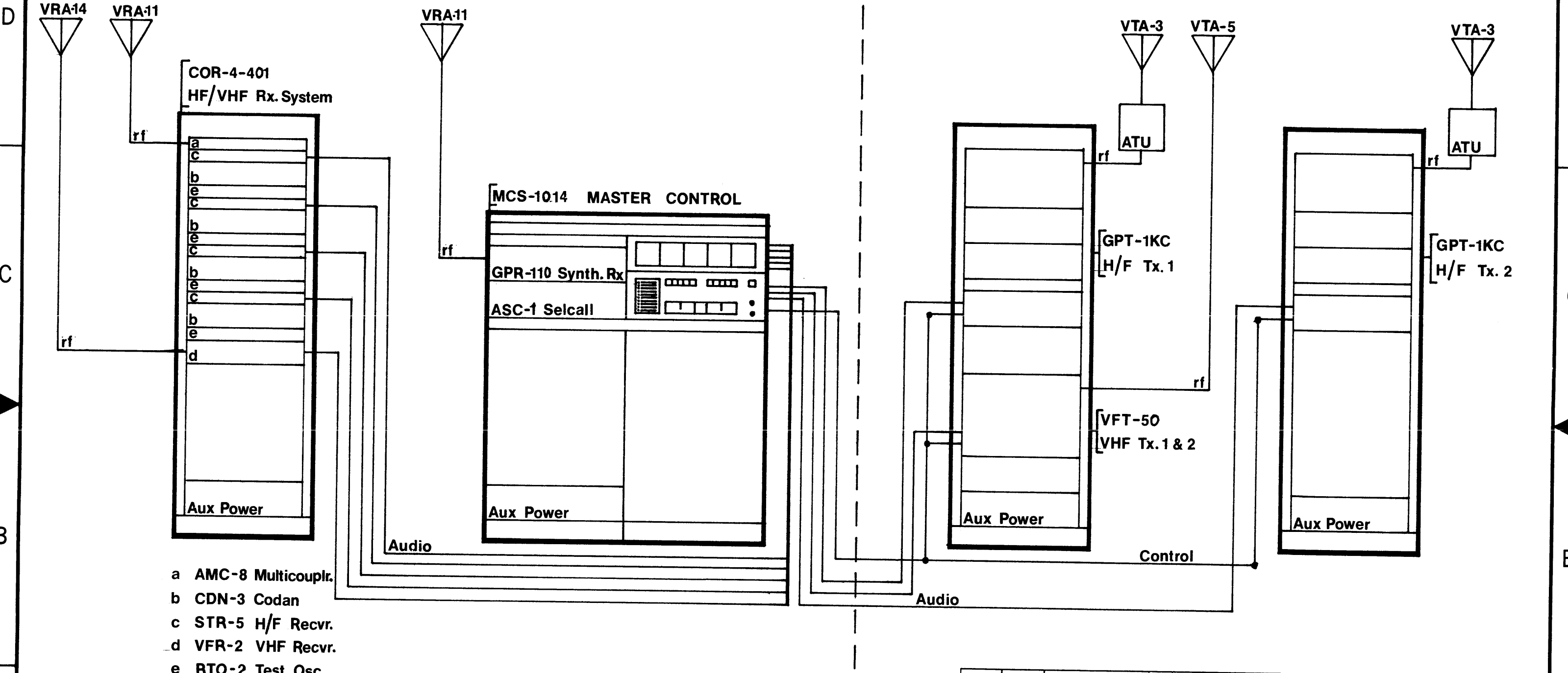
1	KIT406	
QTY / UNIT	MODEL USED ON	ASS'Y NO.
APPLICATION		
	CODE	
NOTICE TO PERSONS RECEIVING THIS DRAWING THE TECHNICAL MATERIEL CORPORATION claims proprietary right in the material disclosed hereon. This drawing is issued in confidence for engineering information only and may not be reproduced or used to manufacture anything shown hereon without permission from THE TECHNICAL MATERIEL CORPORATION to the user. This drawing is loaned for mutual assistance and is subject to recall at any time.		

UNLESS OTHERWISE SPECIFIED DIMENSIONS ARE IN INCHES AND INCLUDE CHEMICALLY APPLIED OR PLATED FINISHES		FINAL APPROVAL	DATE
		<i>[Signature]</i>	5-1-75
DECIMALS	FRACTIONS	ELECT. DES.	DATE
.X ± .05	1/64		
.XX ± .01	TOLS. ANGLES	CHECKED	DATE
.XXX ± .005	0° - 30'		
MATERIAL		DRAWN	DATE
		<i>[Signature]</i>	5-1-75
FINISH			

ENGINEERING SKETCH

NOT FOR PRODUCTION

REVISIONS							
ZONE	LTR	DESCRIPTION	DATE	E.M.N.NO	DRAFT	CHKD	APPD



QTY / UNIT	MODEL USED ON	ASS'Y NO.
APPLICATION		
NOTICE TO PERSONS RECEIVING THIS DRAWING		
THE TECHNICAL MATERIEL CORPORATION claims proprietary right in the material disclosed hereon. This drawing is issued in confidence for engineering information only and may not be reproduced or used to manufacture anything shown hereon without permission from THE TECHNICAL MATERIEL CORPORATION to the user. This drawing is loaned for mutual assistance and is subject to recall at any time.		

UNLESS OTHERWISE SPECIFIED DIMENSIONS ARE IN INCHES AND INCLUDE CHEMICALLY APPLIED OR PLATED FINISHES	
DECIMALS .X ± .05 .XX ± .01 .XXX ± .005	FRACTIONS 1/64 ANGLES 0° -30'
MATERIAL	FINISH

REQ'D	ITEM	PART NUMBER	DESCRIPTION	SYM.
LIST OF MATERIAL				
THE TECHNICAL MATERIEL CORP.				
MAMARONECK, NEW YORK				
GENERAL PURPOSE AIR/GROUND RADIOTELEPHONE				
SIMPLIFIED SYSTEM BLOCK DIAGRAM				
SIZE	CODE IDENT. NO.	DWG NO.	ISSUE	
B	82679	ID442		
SCALE	SHEET		OF	

5

4

3

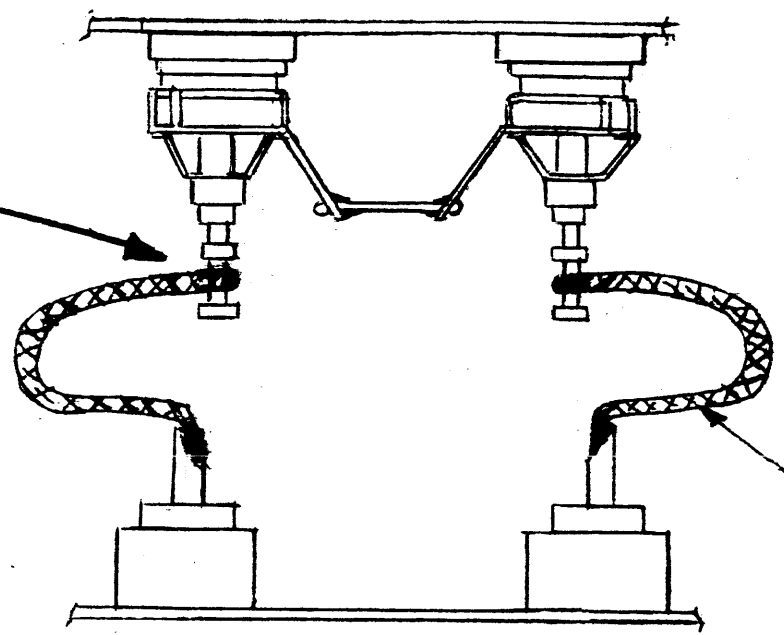
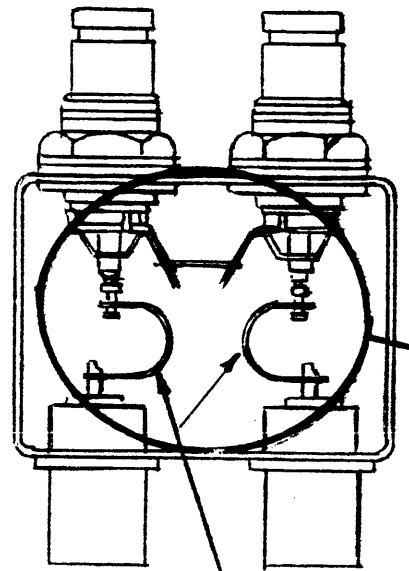
2

1

REVISIONS							
EMN NO.	DRAFT	CHKD	ZONE	LTR	DESCRIPTION	DATE	APPROVED
					ORIGINAL Release	9-15-80	

BEFORE MODIFICATION

AFTER MODIFICATION



ORIGINAL MS-2983-6 REMOVED AND REPLACED WITH BRAID WL-103-1

WL 103-1

PURPOSE OF THIS MODIFICATION IS TO INCREASE RELIABILITY OF NORMAL SWITCH CLOSURE BY RELEASING SPRING TENSION CREATED BY ORIGINAL BERYLLIUM CONNECTIONS.

MECHANICAL AND ELECTRICAL TEST ARE TO BE PERFORMED AS PER ORIGINAL SPECIFICATIONS.

NOTE: SOFT SOLDER ENDS ONLY. HEAT SINK MUST BE USED TO PREVENT SOLDER WICKING AND TRAVELING TO UNWANTED AREAS OF BRAID.

PAINT TO BE DONE TO EXACT SPECIFICATION
S114- ZINCCOHROMATE PRIMER
S115- TMC SMOOTH GREY ENAMEL

RF CONN SERIES		
QTY / UNIT	MODEL USED ON	ASS'Y NO.
APPLICATION		
CODE		
<p>NOTICE TO PERSONS RECEIVING THIS DRAWING THE TECHNICAL MATERIEL CORPORATION claims proprietary right in the material disclosed hereon. This drawing is issued in confidence for engineering information only and may not be reproduced or used to manufacture anything shown hereon without permission from THE TECHNICAL MATERIEL CORPORATION to the user. This drawing is loaned for mutual assistance and is subject to recall at any time.</p>		

UNLESS OTHERWISE SPECIFIED DIMENSIONS ARE IN INCHES AND INCLUDE CHEMICALLY APPLIED OR PLATED FINISHES	
DECIMALS .X ± .05 .XX ± .01 .XXX ± .005	FRACTIONS TOLS. 1/64 ANGLES 0°-30'
MATERIAL	
FINISH	

REQ'D	ITEM	PART NUMBER	DESCRIPTION	SYM.
LIST OF MATERIAL				
<p>FINAL APPROVAL: [Signature] DATE: 9-15-80</p> <p>MECH. DES. DATE</p> <p>ELECT. DES. DATE</p> <p>CHECKED DATE</p> <p>DRAWN: [Signature] DATE: 9-15-80</p>				
<p>THE TECHNICAL MATERIEL CORP. MAMARONECK, NEW YORK</p> <p>ENGR. MODIFICATION SW 310</p>				
SIZE	CODE IDENT. NO.	DWG NO.	ISSUE	
B	82679	ID 446	[Signature]	
SCALE	SHEET			OF

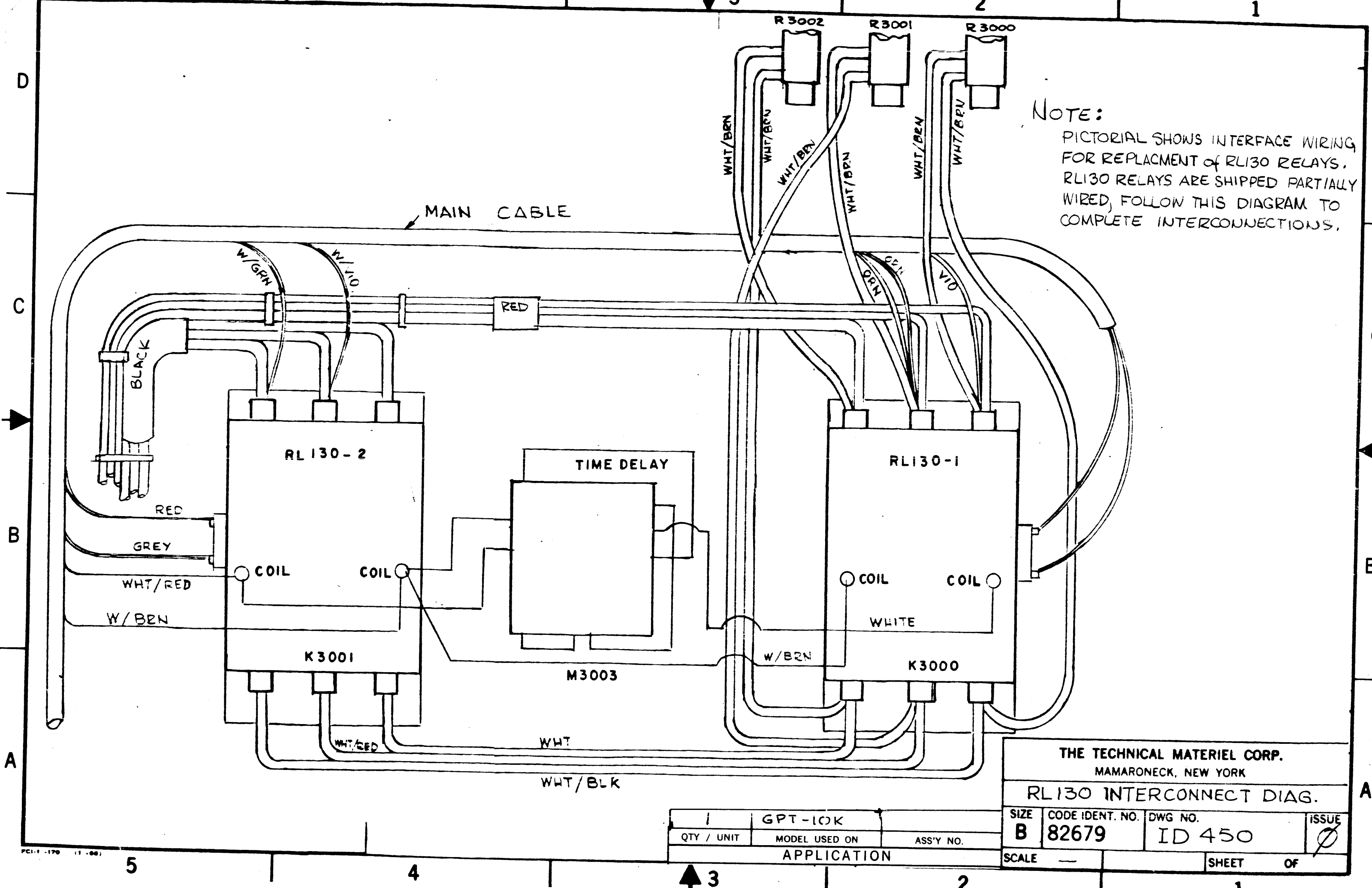
5

4

3

2

1



NOTE:
 PICTORIAL SHOWS INTERFACE WIRING FOR REPLACEMENT OF RL130 RELAYS. RL130 RELAYS ARE SHIPPED PARTIALLY WIRED, FOLLOW THIS DIAGRAM TO COMPLETE INTERCONNECTIONS.

THE TECHNICAL MATERIEL CORP. MAMARONECK, NEW YORK			
RL130 INTERCONNECT DIAG.			
SIZE	CODE IDENT. NO.	DWG NO.	ISSUE
B	82679	ID 450	1
SCALE	SHEET		OF
—	1		1

1	GPT-10K	
QTY / UNIT	MODEL USED ON	ASS'Y NO.
	APPLICATION	

5

4

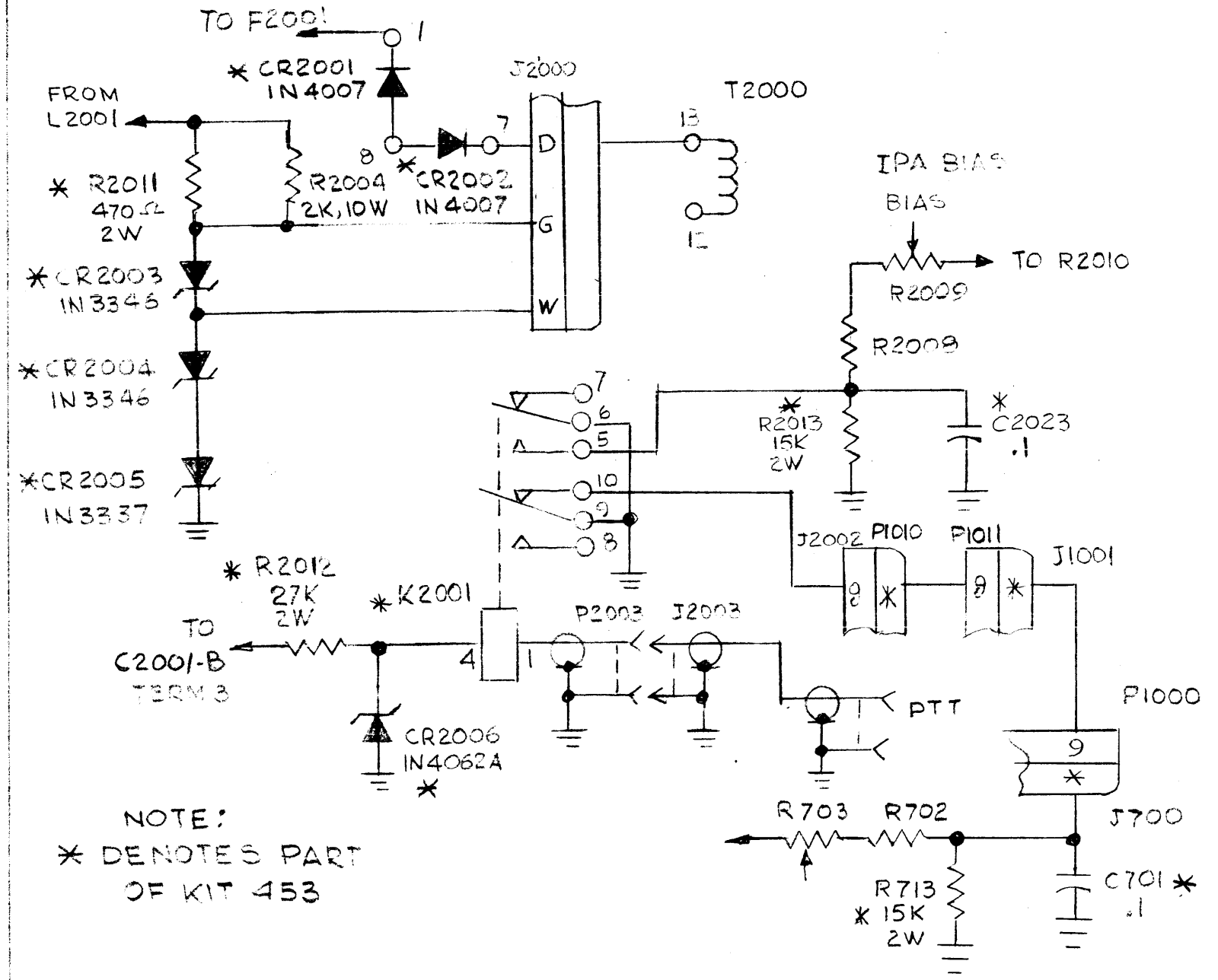
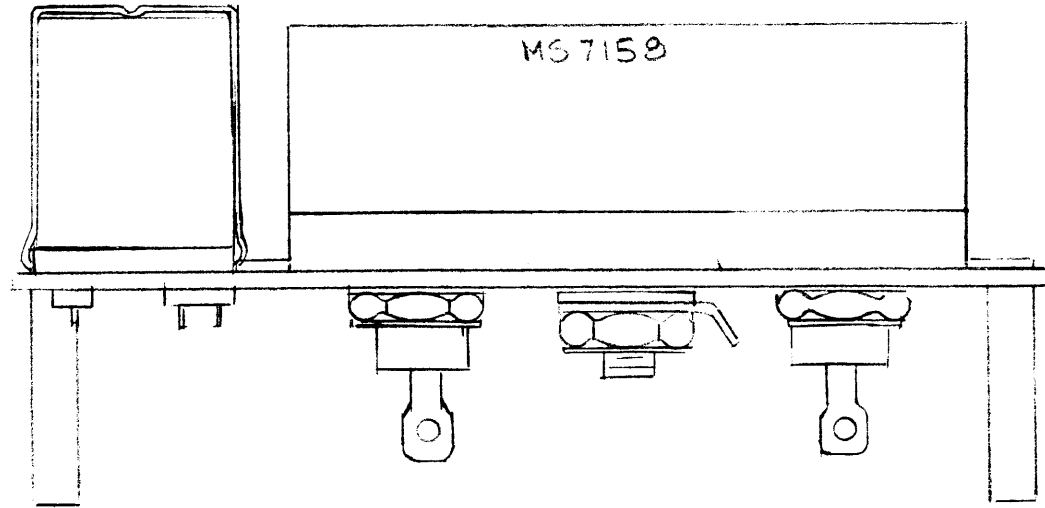
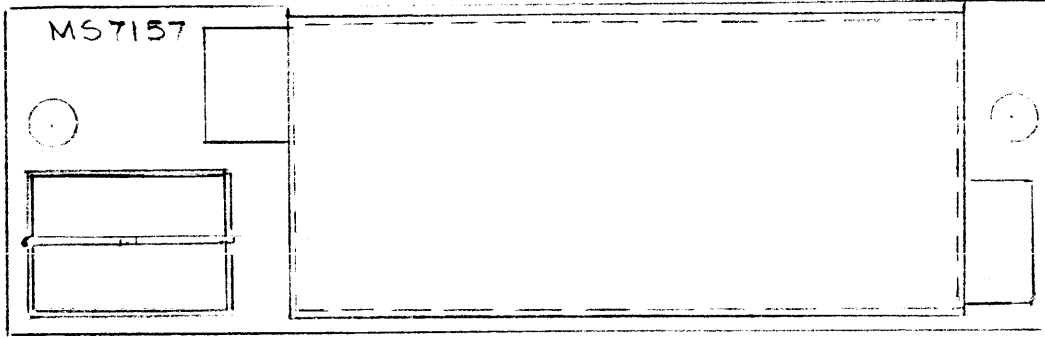
3

2

1

REVISIONS

E.M.N. NO.	DRAFT	CHKD	ZONE	LTR	DESCRIPTION	DATE	APPROVED
------------	-------	------	------	-----	-------------	------	----------



NOTE:
* DENOTES PART OF KIT 453

REQ'D	ITEM	PART NUMBER	DESCRIPTION	SYM.
-------	------	-------------	-------------	------

LIST OF MATERIAL

THE TECHNICAL MATERIEL CORP. MAMARONECK, NEW YORK			
KIT 453 (BIAS OFF) GPT-10K (AN/FRT-39)			
SIZE	CODE IDENT. NO.	DWG NO.	ISSUE
B	82679	ID464	X
SCALE	SHEET		OF

AX 104

QTY / UNIT	MODEL USED ON	ASS'Y NO.
APPLICATION		
CODE		
MATERIAL		
FINISH		

NOTICE TO PERSONS RECEIVING THIS DRAWING
THE TECHNICAL MATERIEL CORPORATION claims proprietary right in the material disclosed hereon. This drawing is issued in confidence for engineering information only and may not be reproduced or used to manufacture anything shown hereon without permission from THE TECHNICAL MATERIEL CORPORATION to the user. This drawing is loaned for mutual assistance and is subject to recall at any time.

UNLESS OTHERWISE SPECIFIED DIMENSIONS ARE IN INCHES AND INCLUDE CHEMICALLY APPLIED OR PLATED FINISHES	FINAL APPROVAL	DATE
DECIMALS .X ± .05 .XX ± .01 .XXX ± .005	MECH. DES.	DATE
	ELECT. DES.	DATE
	CHECKED	DATE
FRACTIONS 1/64 ANGLES 0°-30'	DRAWN	DATE
	GDL	3-1991

5

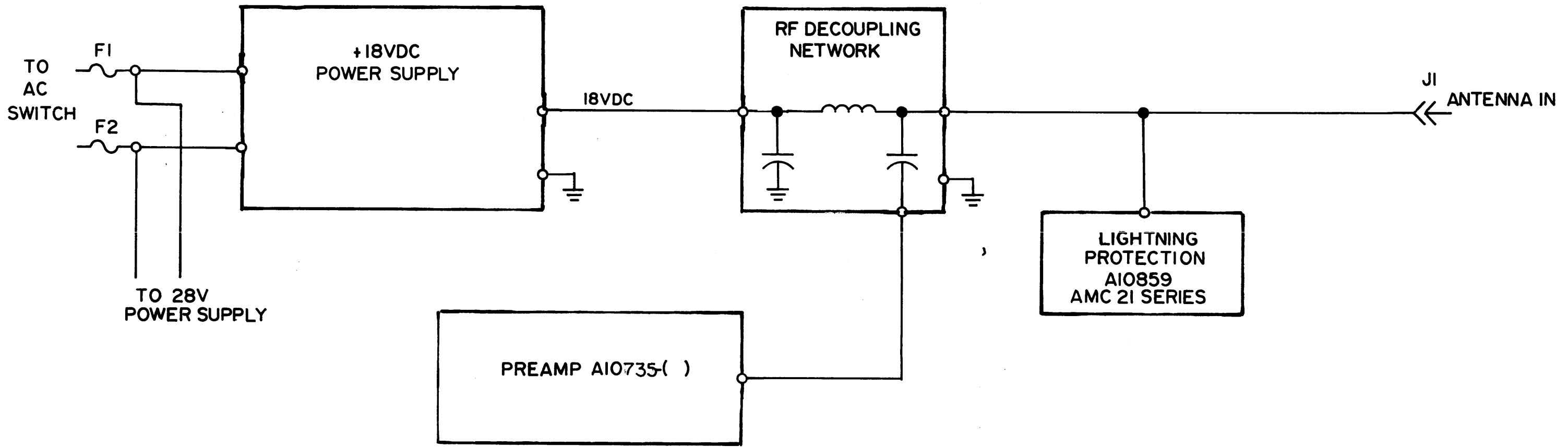
4

3

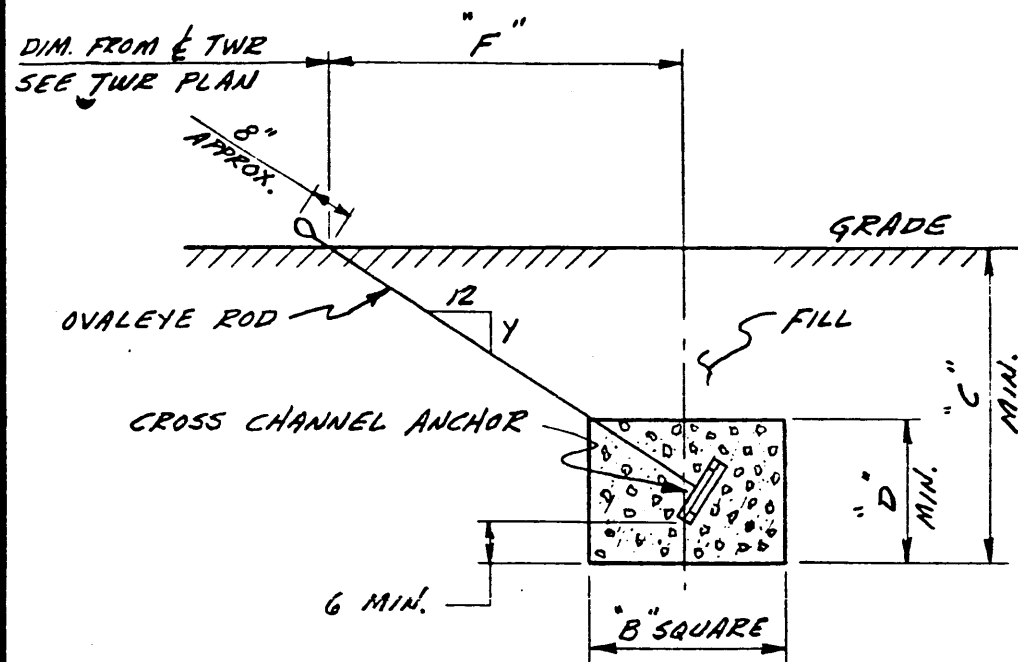
2

1

REVISIONS							
E.M.N. NO.	DRAFT	CHKD	ZONE	LTR	DESCRIPTION	DATE	APPROVED



QTY / UNIT	MODEL USED ON	ASS'Y NO.	REQ'D	ITEM	PART NUMBER	DESCRIPTION	SYM.
LIST OF MATERIAL							
AMC			UNLESS OTHERWISE SPECIFIED DIMENSIONS ARE IN INCHES AND INCLUDE CHEMICALLY APPLIED OR PLATED FINISHES		FINAL APPROVAL	DATE	THE TECHNICAL MATERIEL CORP. MAMARONECK, NEW YORK
APPLICATION			DECIMALS .X ± .05 FRACTIONS 1/64 TOLS. ANGLES 0° -30'		<i>DD.B</i>	3/13/86	
CODE			ELECT. DES.		<i>E.F.M</i>	DATE	DIA., INTERCONNECT AMC()
MATERIAL			CHECKED			DATE	
FINISH			DRAWN		<i>RAW</i>	DATE	SIZE B CODE IDENT. NO. 82679 DWG NO. ID465
NOTICE TO PERSONS RECEIVING THIS DRAWING THE TECHNICAL MATERIEL CORPORATION claims proprietary right in the material disclosed hereon. This drawing is issued in confidence for engineering information only and may not be reproduced or used to manufacture anything shown hereon without permission from THE TECHNICAL MATERIEL CORPORATION to the user. This drawing is loaned for mutual assistance and is subject to recall at any time.			SCALE			DATE 3-86	
			SHEET			OF	ISSUE

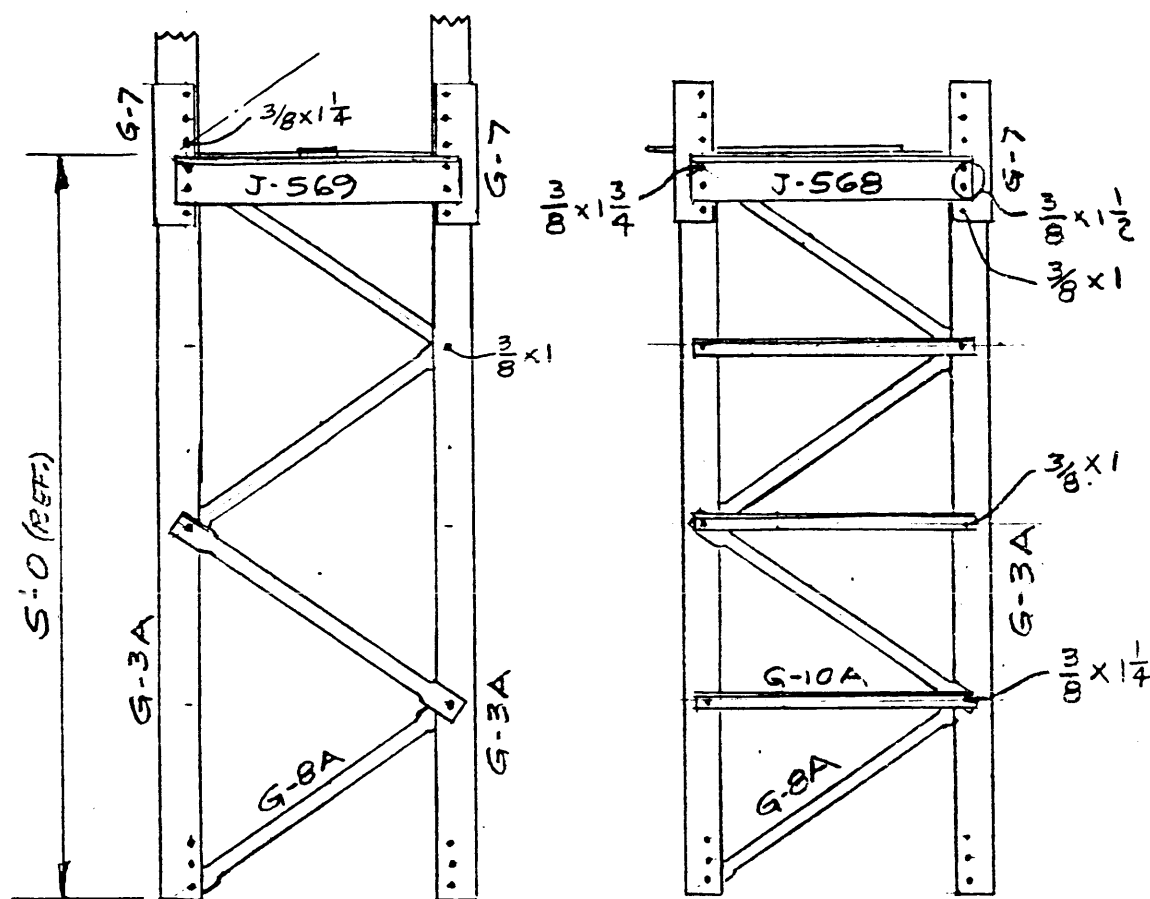
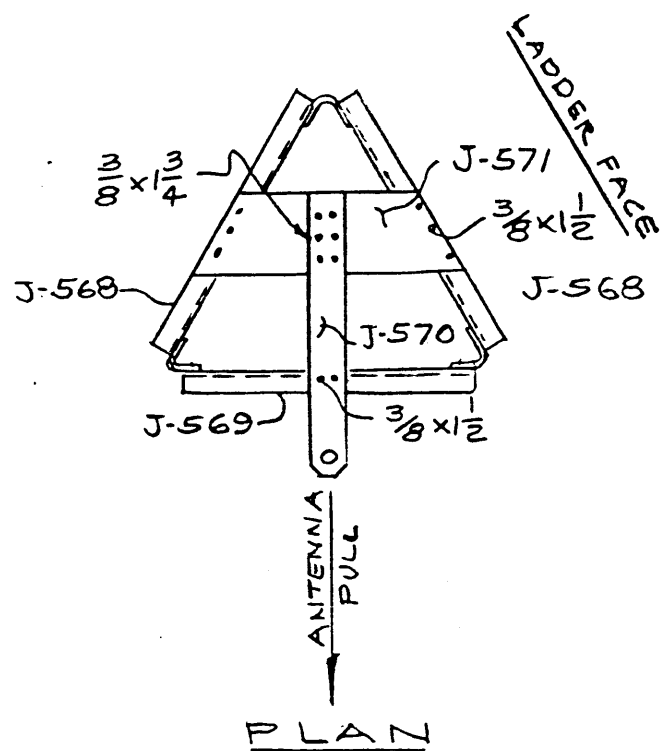


NOTES:

1. ALL CONCRETE TO HAVE AN ULTIMATE COMPRESSIVE STRENGTH OF 2500 P.S.I. @ 28 DAYS
2. ANCHORS DESIGNED FOR NORMAL SOIL (4000 LBS/SQ. FT. BEARING)
3. CONCRETE MIX 1:2:4
4. WATER CEMENT RATIO 6.5:1

7.45	1 1/4	1087-2	8 15/16	3/4 x 9'-0"	6'-4"	3'-0"	6'-0"	4'-0"	21-7
7.45	1 1/4	1087-2	8 15/16	3/4 x 10'-0"	7'-0"	3'-0"	6'-7"	4'-0"	21-6
4.0	1	1087-1	7 1/4	5/8 x 7'-0"	5'-4 9/16"	2'-6"	4'-6"	3'-6"	21-5
1.75	1	1147-1	6 15/16	1/2 x 7'-0"	5'-6 3/16"	2'-0"	4'-2 1/4"	3'-0"	21-4
10.0	1 1/4	1087-3	9 3/4	1" x 10'-0"	7'-0"	3'-0"	6'-6"	4'-0"	21-3
5.2	1	1087-1	9	5/8 x 7'-0"	8'-0"	2'-6"	5'-0"	3'-0"	21-2
8.85	1 1/4	1087-3	12	1" x 10'-0"	6'-7"	3'-0"	8'-0"	4'-0"	21-1
MAX. RESULT. LD. KIPS	CONC. VOL. CU. YD.	CROSS CHANNEL NO.	Y	SIZE	F	D	C	B	ANCHOR NO.

QTY / UNIT		MODEL USED ON	ASS'Y NO.	UNLESS OTHERWISE SPECIFIED DIMENSIONS ARE IN INCHES AND INCLUDE CHEMICALLY APPLIED OR PLATED FINISHES		FINAL APPROVAL	DATE	THE TECHNICAL MATERIEL CORP. MAMARONECK, NEW YORK			
APPLICATION				DECIMALS .X ± .05 .XX ± .01 .XXX ± .005	FRACTIONS 1/64 TOLS. ANGLES 0°-30'	MECH. DES.	DATE	GUY ANCHORAGE FOR OVALEYE ANCHOR ROD			
CODE B1018-21				MATERIAL		ELECT. DES.	DATE	DRAWN G.DL			
NOTICE TO PERSONS RECEIVING THIS DRAWING THE TECHNICAL MATERIEL CORPORATION claims proprietary right in the material disclosed hereon. This drawing is issued in confidence for engineering information only and may not be reproduced or used to manufacture anything shown hereon without permission from THE TECHNICAL MATERIEL CORPORATION to the user. This drawing is loaned for mutual assistance and is subject to recall at any time.				FINISH		CHECKED EFM	DATE 11/7/81	SIZE B	CODE IDENT. NO. 82679	DWG NO. ID-469	ISSUE
						SCALE		SHEET OF			



BILL OF MAT'L. SECTION J-5 SBTST	
ITEM	QUANTITY
G-3A	3
G-10A	6
G-8A	12
J-568	2
J-569	1
J-570	1
J-571	1
G-7	3
3/8 x 1	30
3/8 x 1/4	9
3/8 x 1/2	9
3/8 x 1 3/4	3
3/8 PALNUT	51

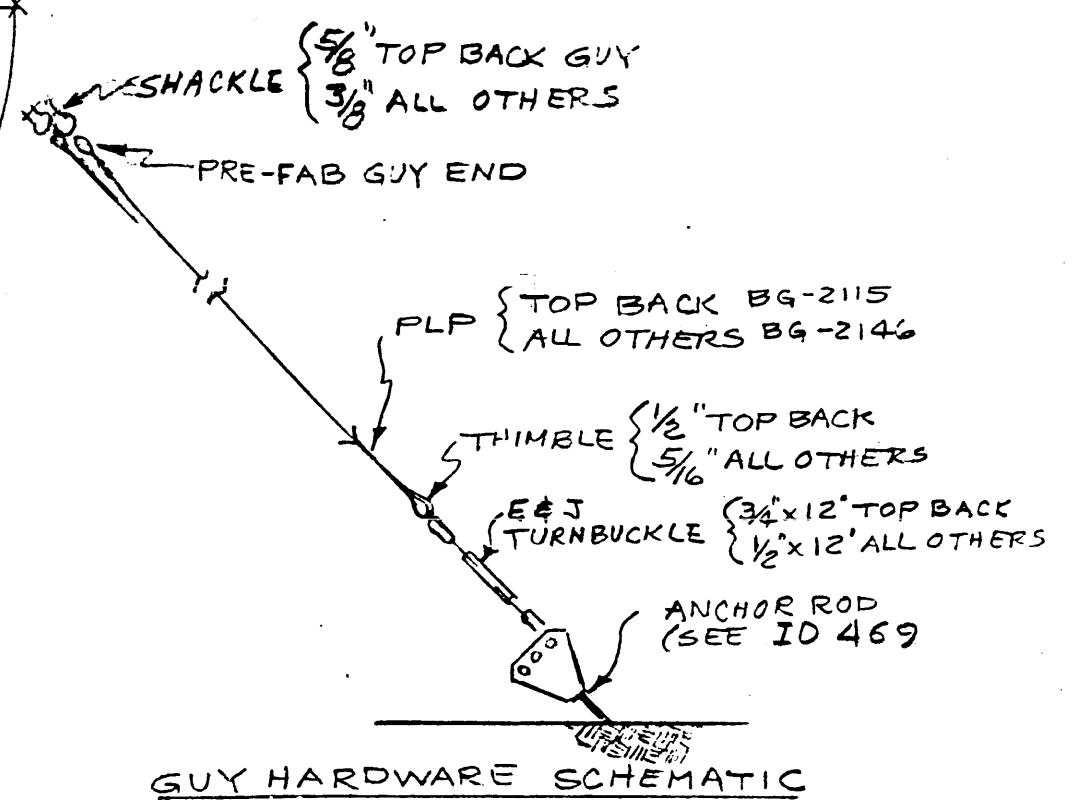
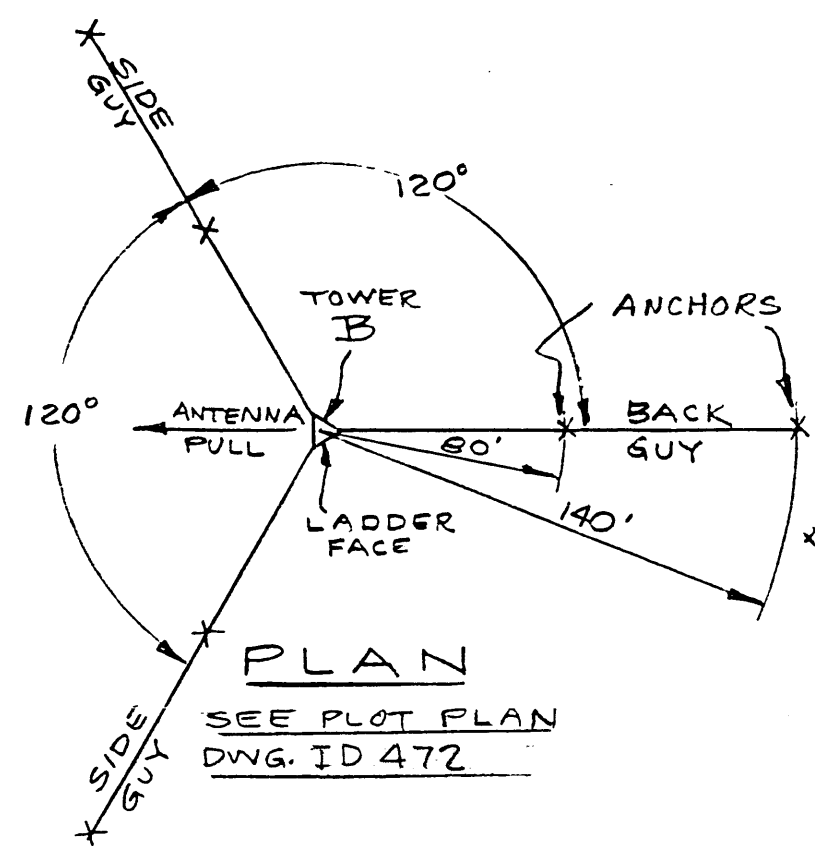
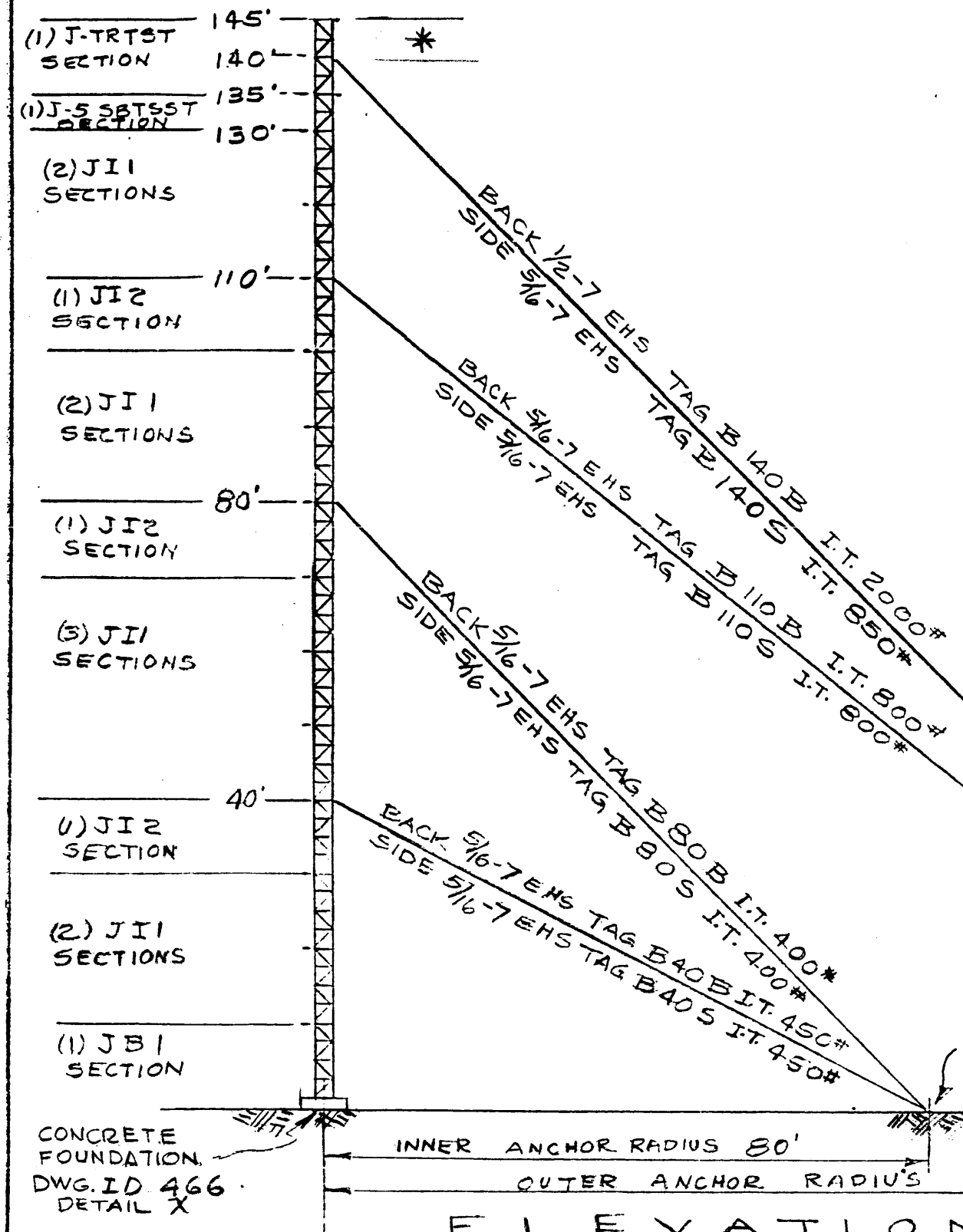
ELEVATION

5'-0 SECTION
J-5 SBTST

HORIZONTAL ANTENNA ATTACHMENT
FOR SIDE TOWER. BELOW TOP SECTION
J-TRTST (REF. DWGS. ID 466 & ID 471)

CODE B-32-644

THE TECHNICAL MATERIEL CORP. MAMARONECK, NEW YORK			
HORIZONTAL ANTENNA ATTACHMENT S' SECTION TYPE 2400 RHOMBIC			
FINAL APPROVAL <i>[Signature]</i>	DATE 9/21/81	SIZE A	CODE IDENT. NO. 82679
CHECKED E.F.M.	DATE 9/22/81	DWG NO. ID-470	ISSUE
DRAWN G.D.L.	DATE 9/7/81	SCALE	SHEET OF



- NOTES:**
- 1-FOR ERECTION OF TOWER SECTIONS SEE DWG. D-32-411
 - * 2-FOR ERECTION OF S' SECTION (J-5 SBTSSST) SEE DWG. ID 470 (WHEN REQD)
 - 3-ALL GUYSS ARE PRE-FABRICATED ONE END WITH THIMBLE & SQUEEZES FITTING OTHER END LOOSE. ALL BACK GUYS ARE NON-INSULATED, SIDE GUYS ARE INSULATED PRE-FAB. ONE END WITH THIMBLE, SQUEEZE FITTING & INSULATORS SPACED EVERY 25'.
 - 4-INITIAL TENSION IS WITH ANTENNA IN POSITION.

THE TECHNICAL MATERIEL CORP. MAMARONECK, NEW YORK			
ERECTION DIAGRAM RHOMBIC 2400 140' END TOWER			
FINAL APPROVAL	DATE	SIZE	CODE IDENT. NO.
CHECKED <i>EEM</i>	DATE	A	82679
DRAWN <i>G.D.L.</i>	DATE	SCALE	DWG NO.
	7/7/81		ID 471
CODE B-EDR-24S			SHEET OF

ANTENNA & TOWER DATA

ANGLE θ	LEG LENGTH	L	$\frac{L}{2}$	W	$\frac{W}{2}$
70°	500'	949.69'	474.84'	352.02'	176.01'
(SEE NOTE) *					

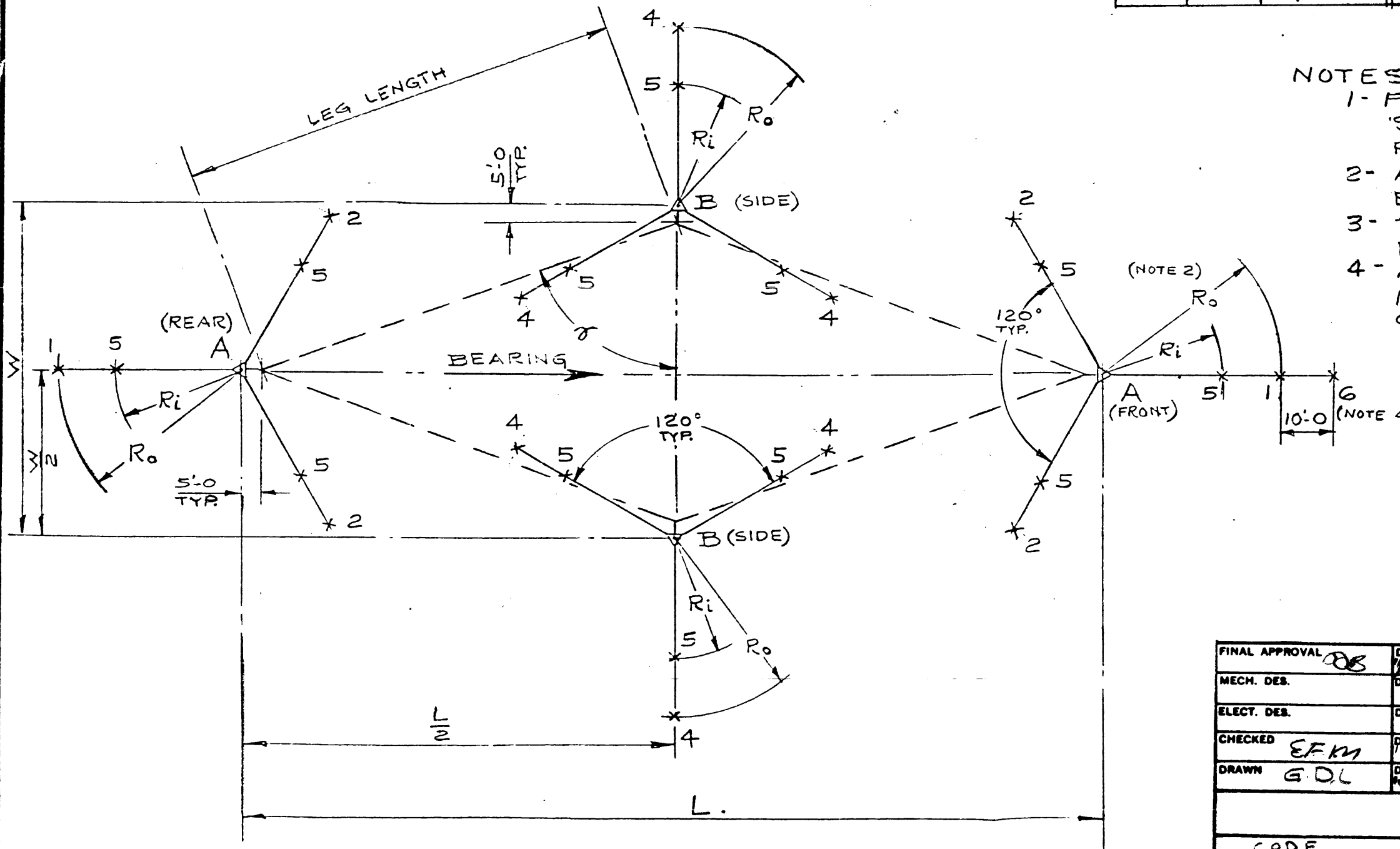
NOTE: *

THE 70° ANGLE SHOWN ON THIS DRAWING IS FOR REFERENCE ONLY.

CUSTOMER'S RADIATION CHARACTERISTICS REQD. ARE TO DETERMINE THIS ANGLE BETWEEN THE PRINCIPLE AXIS & SIDE; IN DEGREES.

ANCHOR DATA

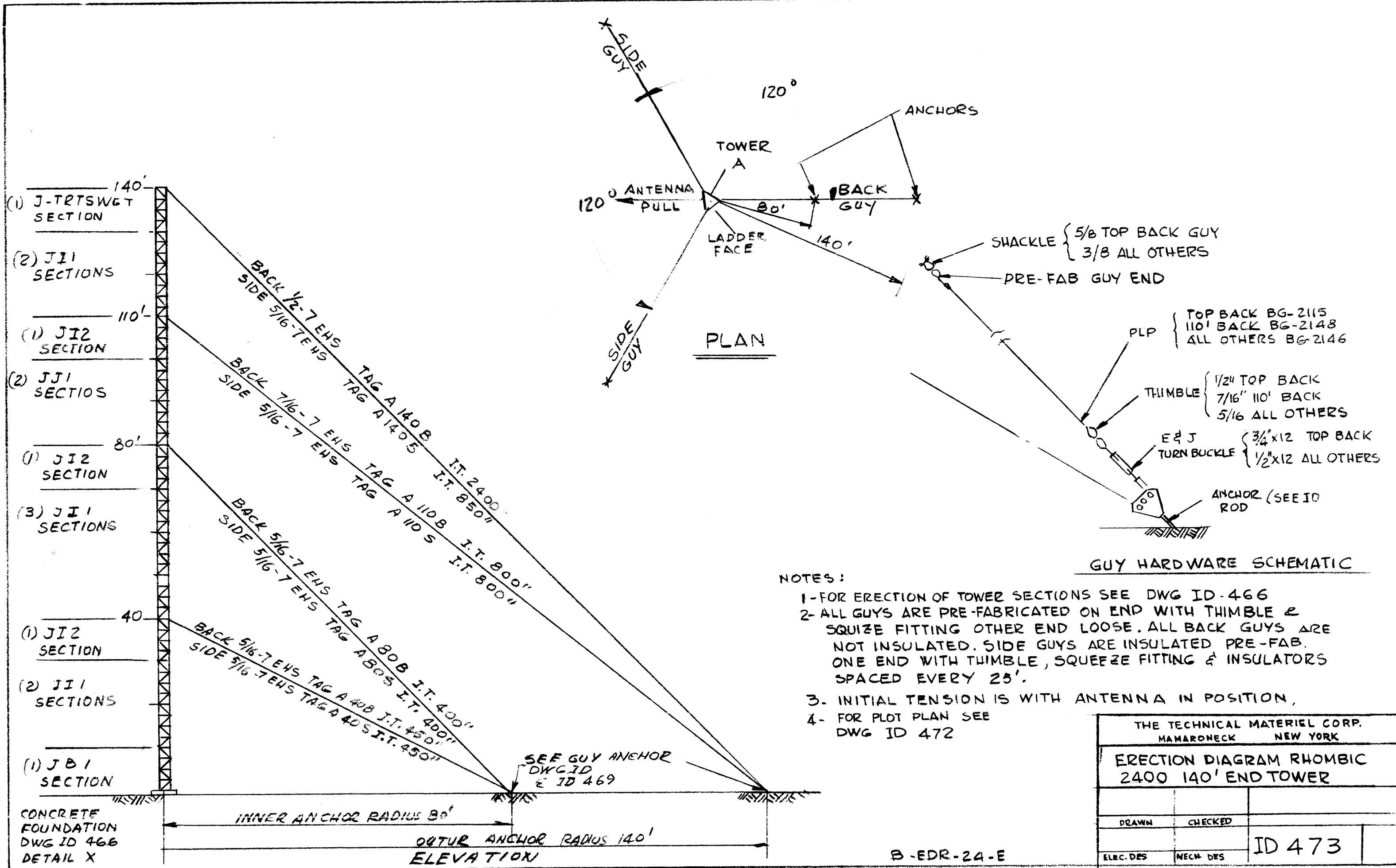
ANCHOR DWG. B-1018-21		OVALEYE ANCHOR ROD SIZE	CROSS CHANNEL ANCHOR
LOCATION	ANC. NO.		
1	21-3	1" x 10'-0	1087-3
2	21-5	5/8" x 7'-0	1087-1
3	21-7	3/4" x 9'-0	1087-2
4	21-7	3/4" x 9'-0	1087-2
5	21-5	5/8" x 7'-0	1087-1
6	21-7	3/4" x 9'-0	1087-2



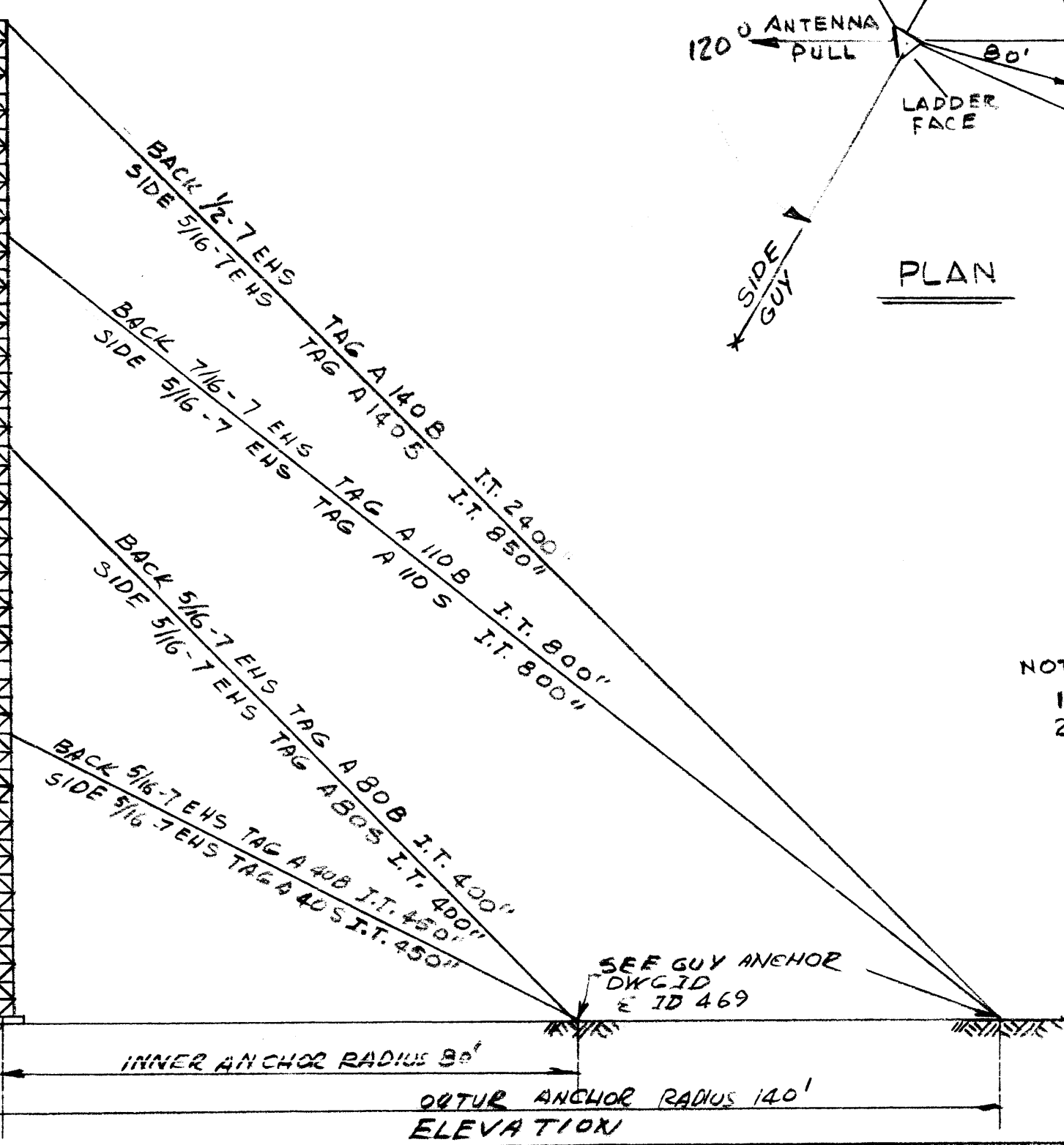
NOTES -

- 1- FOR ERECTION DIAGRAM OF TOWERS 'SEE ELEVATION DRAWINGS FOR PARTICULAR JOB
- 2- ANCHOR RADIUS 'R_o' SAME AS TOP GUY ELEV. - SEE ERECTION DIAGRAM
- 3- TOWER ERECTION DETAILS & TOWER FOUNDATION - SEE DWG. ID 466
- 4- ANCHOR 6 IS USED IF ANTENNA IS RAISED WITH SHEAVE MOUNTING (DWG. ID 466) ON FRONT END TOWER. OMIT ANCHOR INSTALLATION IF ANTENNA IS RAISED OTHERWISE.

FINAL APPROVAL <i>[Signature]</i>	DATE <i>11/2/81</i>	THE TECHNICAL MATERIEL CORP. MAMARONECK, NEW YORK			
MECH. DES.	DATE				
ELECT. DES.	DATE	BASE & ANCHOR PLAN RHOMBIC ANTENNA - DOUBLE ANCHOR RAD.			
CHECKED <i>EFM</i>	DATE <i>11/12/81</i>				
DRAWN <i>GDL</i>	DATE <i>10/81</i>	SIZE	CODE IDENT. NO.	DWG NO.	ISSUE
		B	82679	ID 472	
CODE B-32-1000-4	SCALE	SHEET		OF	



(1) J-TRTSWGT SECTION
 (2) JI1 SECTIONS
 (1) JI2 SECTION
 (2) JI1 SECTIONS
 (1) JI2 SECTION
 (3) JI1 SECTIONS
 (1) JI2 SECTION
 (2) JI1 SECTIONS
 (1) JBI SECTION



GUY HARDWARE SCHEMATIC

NOTES:

- 1-FOR ERECTION OF TOWER SECTIONS SEE DWG ID-466
- 2- ALL GUYS ARE PRE-FABRICATED ON END WITH THIMBLE & SQUEEZE FITTING OTHER END LOOSE. ALL BACK GUYS ARE NOT INSULATED. SIDE GUYS ARE INSULATED PRE-FAB. ONE END WITH THIMBLE, SQUEEZE FITTING & INSULATORS SPACED EVERY 25'.
3. INITIAL TENSION IS WITH ANTENNA IN POSITION,
- 4- FOR PLOT PLAN SEE DWG ID 472

THE TECHNICAL MATERIEL CORP. MAMARONECK NEW YORK	
ERECTION DIAGRAM RHOMBIC 2400 140' END TOWER	
DRAWN	CHECKED
ELEC. DES	MECH. DES
ID 473	

B-EDR-24-E

5

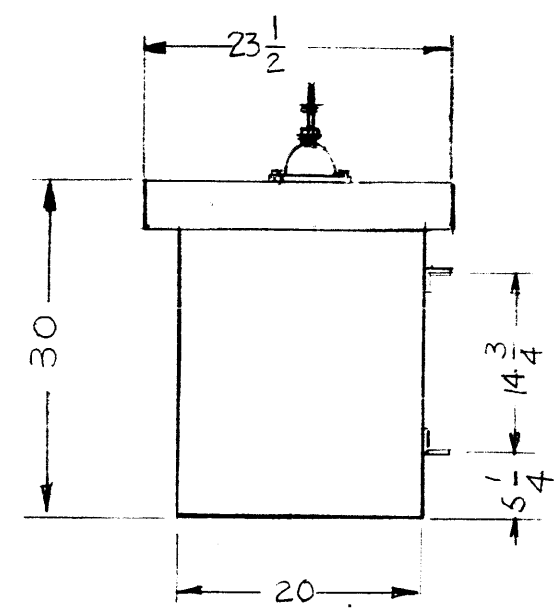
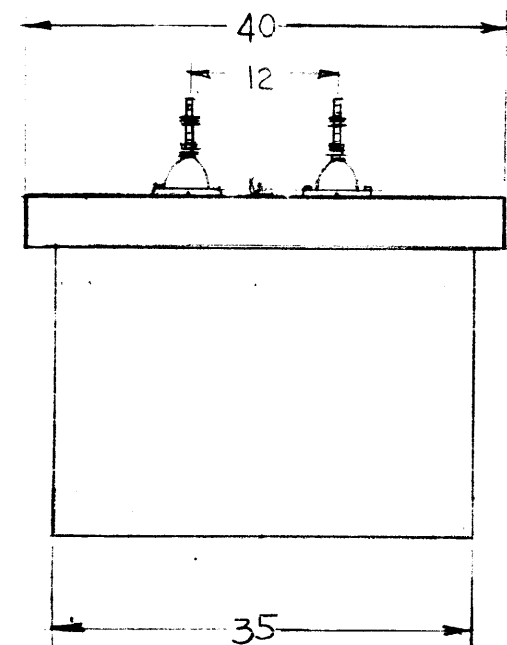
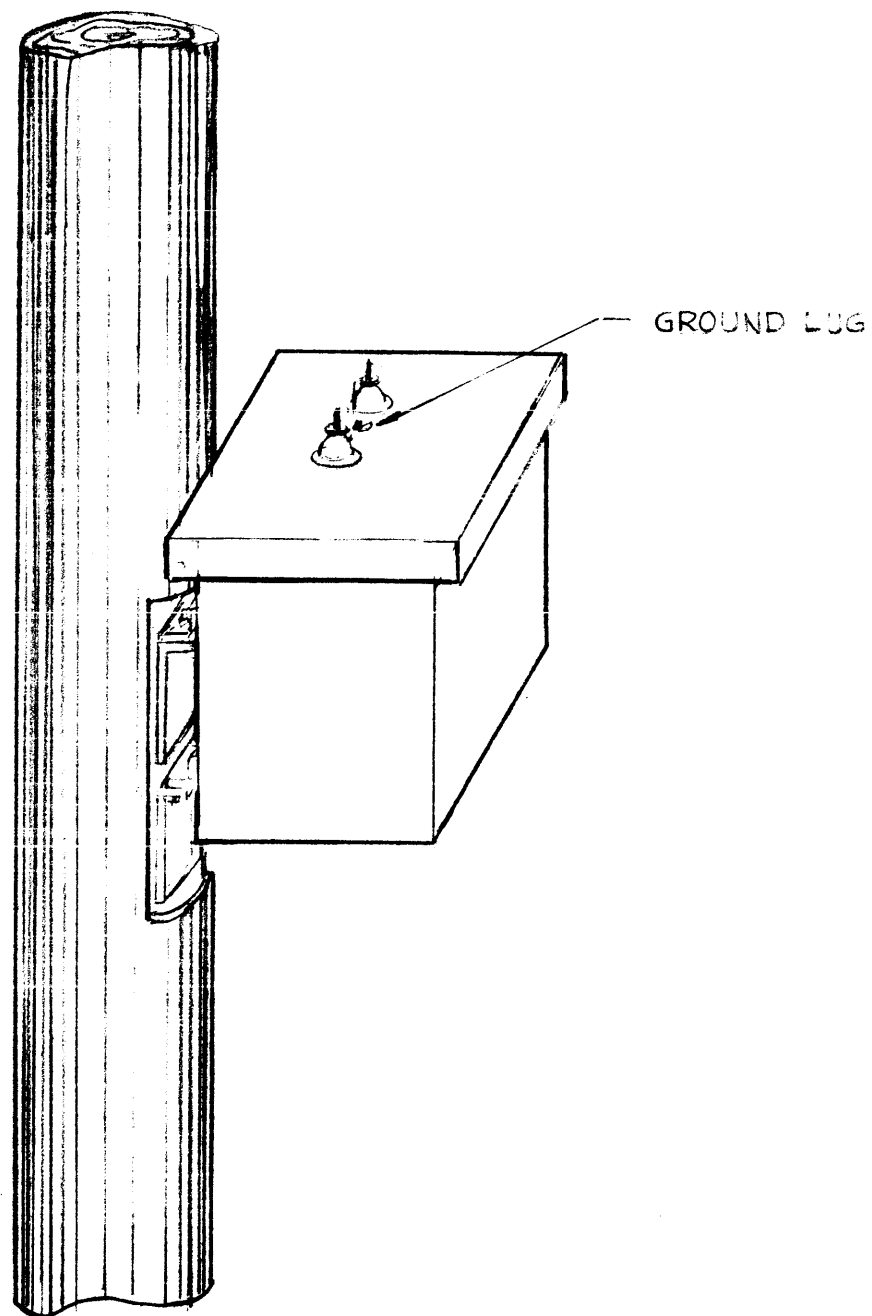
4

3

2

1

REVISIONS							
E.M.N. NO.	DRAFT	CHKD	ZONE	LTR	DESCRIPTION	DATE	APPROVED



TYPICAL POLE MOUNTING

QTY / UNIT	MODEL USED ON	ASS'Y NO.
	TER-4K	
APPLICATION		
	CODE	

NOTICE TO PERSONS RECEIVING THIS DRAWING
 THE TECHNICAL MATERIEL CORPORATION claims proprietary right in the material disclosed hereon. This drawing is issued in confidence for engineering information only and may not be reproduced or used to manufacture anything shown hereon without permission from THE TECHNICAL MATERIEL CORPORATION to the user. This drawing is loaned for mutual assistance and is subject to recall at any time.

UNLESS OTHERWISE SPECIFIED DIMENSIONS ARE IN INCHES AND INCLUDE CHEMICALLY APPLIED OR PLATED FINISHES	
DECIMALS	FRACTIONS
.X ± .05	1/64
.XX ± .01	TOLS. ANGLES
.XXX ± .005	0° - 30'
MATERIAL	
FINISH	

REQ'D	ITEM	PART NUMBER	DESCRIPTION	SYM.
LIST OF MATERIAL				
THE TECHNICAL MATERIEL CORP. MAMARONECK, NEW YORK				
INSTALLATION TER-4K				
SIZE	CODE IDENT. NO.	DWG NO.	ISSUE	
B	82679	ID 476		
SCALE	SHEET		OF	

5

4

3

2

1

5

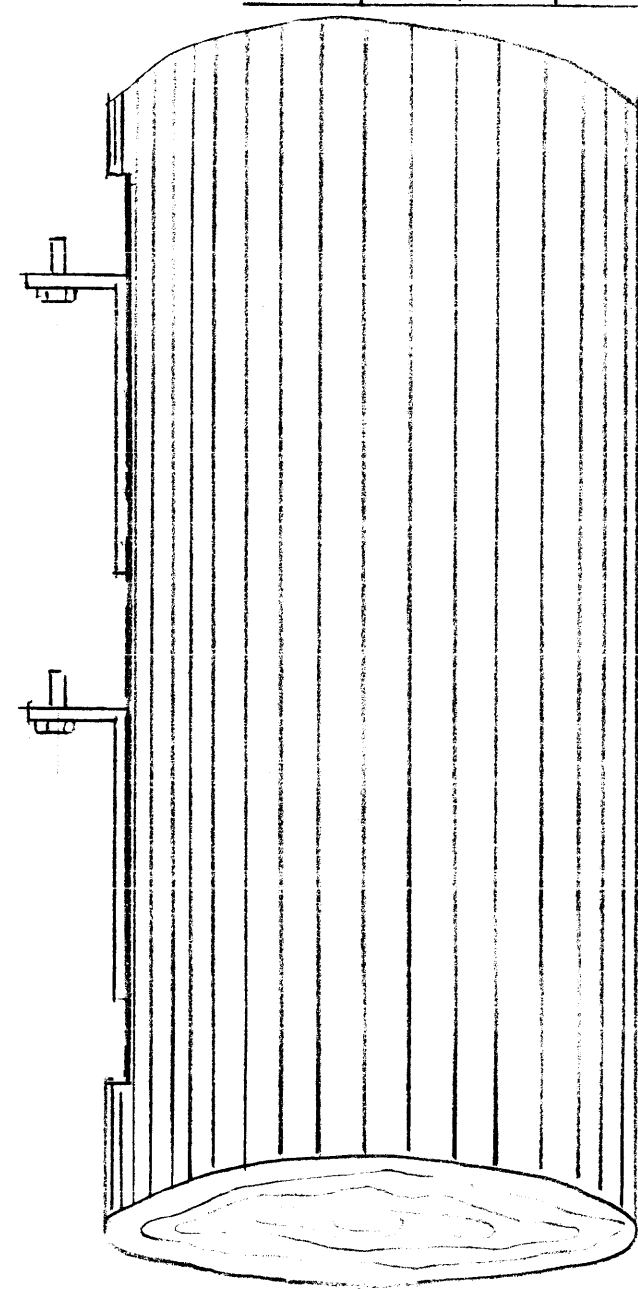
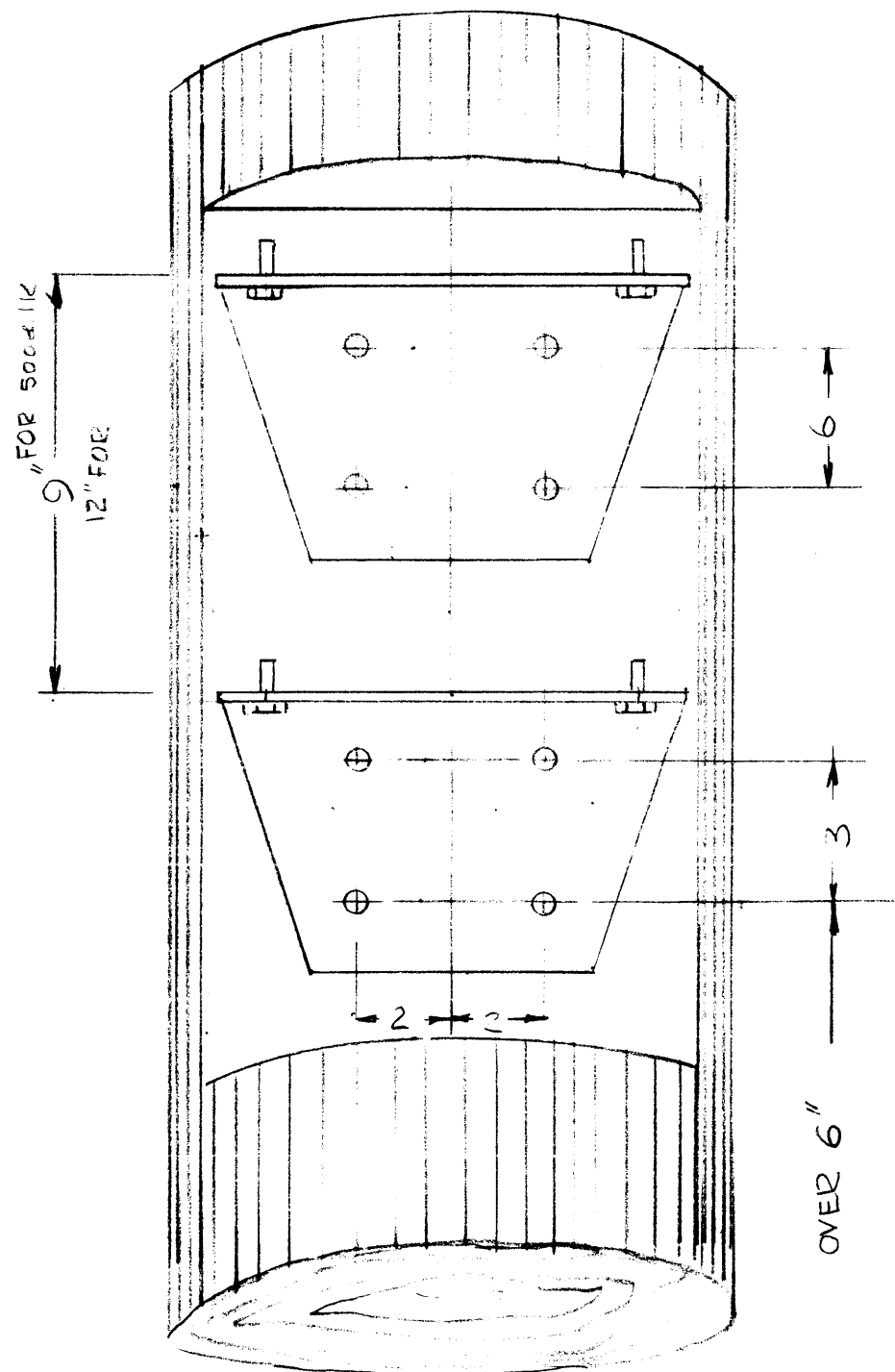
4

3

2

1

REVISIONS							
E.M.N. NO.	DRAFT	CHKD	ZONE	LTR	DESCRIPTION	DATE	APPROVED
	G.D.L.			Ø	ORIG. RELEASE FOR PRODUCT.	3-20-91	<i>RE</i>



OVER 6"

REQ'D	ITEM	PART NUMBER	DESCRIPTION	SYM.
LIST OF MATERIAL				
THE TECHNICAL MATERIEL CORP. MAMARONECK, NEW YORK				
POLE MTG. TER 500 & 1K				
FINAL APPROVAL <i>G.D.L.</i>		DATE	DATE	
MECH. DES.		DATE	DATE	
ELECT. DES.		DATE	DATE	
CHECKED		DATE	DATE	
DRAWN G.D.L.		DATE	DATE	
SIZE	CODE IDENT. NO.	DWG NO.	ISSUE	
B	82679	ID 475	Ø	
SCALE	SHEET		OF	

QTY / UNIT.	MODEL USED ON	ASS'Y NO.
1	TER-520-1K	
APPLICATION		
CODE		

NOTICE TO PERSONS RECEIVING THIS DRAWING
 THE TECHNICAL MATERIEL CORPORATION claims proprietary right in the material disclosed hereon. This drawing is issued in confidence for engineering information only and may not be reproduced or used to manufacture anything shown hereon without permission from THE TECHNICAL MATERIEL CORPORATION to the user. This drawing is loaned for mutual assistance and is subject to recall at any time.

UNLESS OTHERWISE SPECIFIED DIMENSIONS ARE IN INCHES AND INCLUDE CHEMICALLY APPLIED OR PLATED FINISHES

DECIMALS: .X ± .05, .XX ± .01, .XXX ± .005
 FRACTIONS: 1/64
 TOLS. ANGLES: 0° - 30'

MATERIAL

FINISH

5

4

3

2

1

5

4

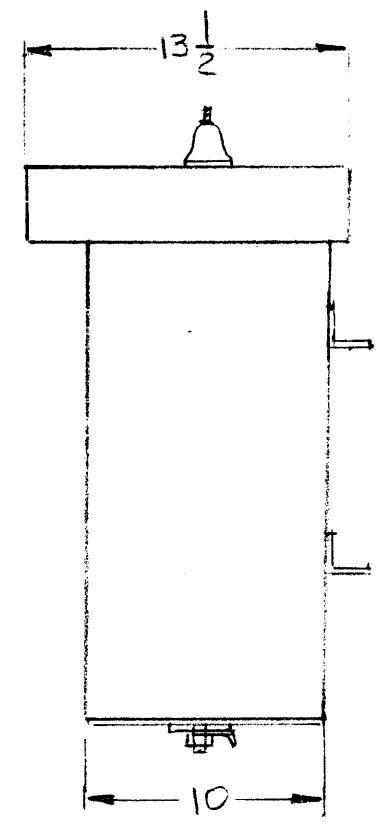
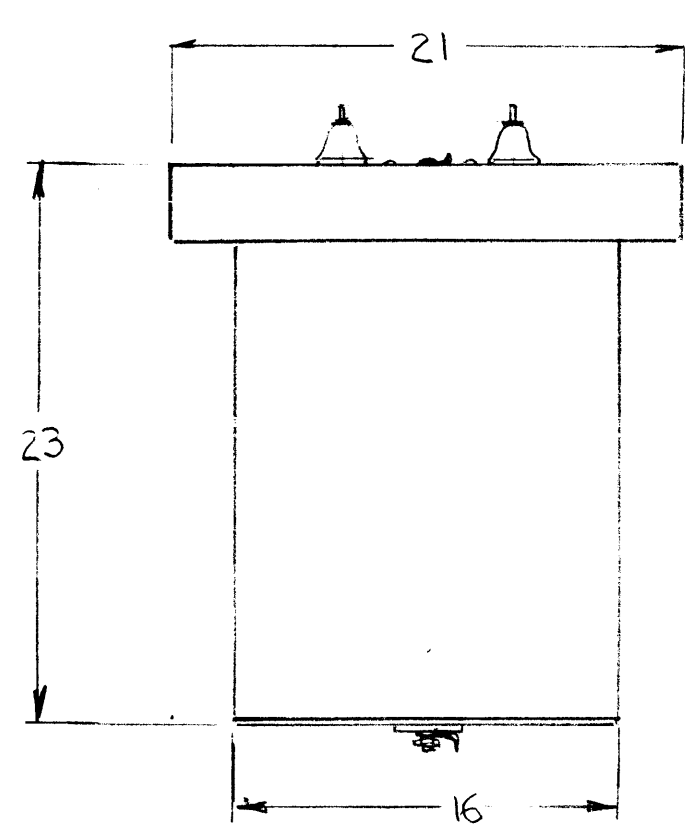
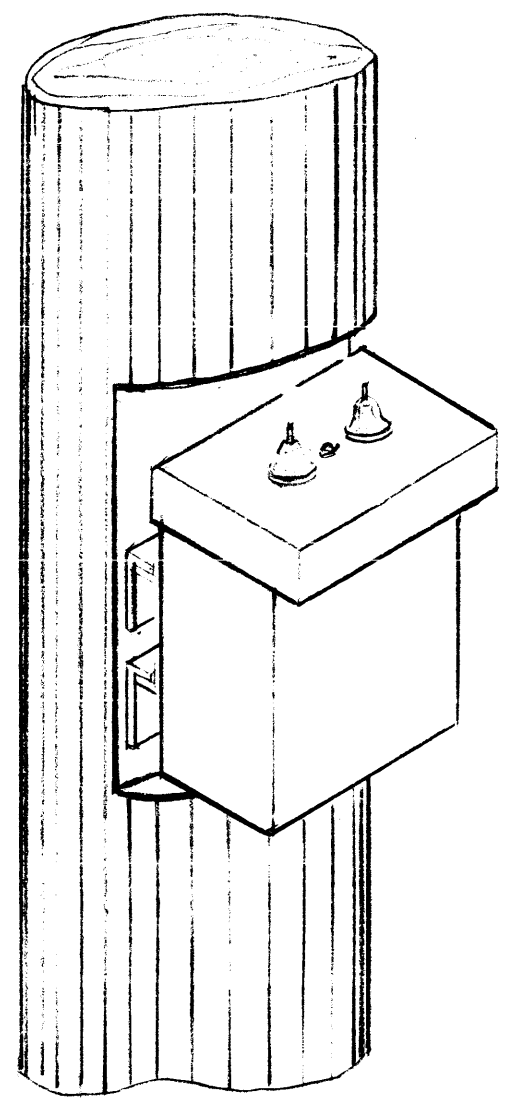
3

2

1

REVISIONS							
E.M.N. NO.	DRAFT	CHKD	ZONE	LTR	DESCRIPTION	DATE	APPROVED

26 *Ø* *DESIGN AS REFERRED FOR 10-1-68* *4-18-70*



REQ'D	ITEM	PART NUMBER	DESCRIPTION	SYM.
-------	------	-------------	-------------	------

LIST OF MATERIAL

FINAL APPROVAL	DATE
MECH. DES.	DATE
ELECT. DES.	DATE
CHECKED	DATE
DRAWN	DATE

THE TECHNICAL MATERIEL CORP.
MAMARONECK, NEW YORK

INSTALLATION TER-500-21K

QTY / UNIT	MODEL USED ON	ASS'Y NO.
APPLICATION		
	CODE	

UNLESS OTHERWISE SPECIFIED DIMENSIONS ARE IN INCHES AND INCLUDE CHEMICALLY APPLIED OR PLATED FINISHES

DECIMALS	FRACTIONS
.X ± .05	TOLS. 1/64
.XX ± .01	ANGLES 0°-30'
.XXX ± .005	

MATERIAL

FINISH

NOTICE TO PERSONS RECEIVING THIS DRAWING
THE TECHNICAL MATERIEL CORPORATION claims proprietary right in the material disclosed hereon. This drawing is issued in confidence for engineering information only and may not be reproduced or used to manufacture anything shown hereon without permission from THE TECHNICAL MATERIEL CORPORATION to the user. This drawing is loaned for mutual assistance and is subject to recall at any time.

SIZE	CODE IDENT. NO.	DWG NO.	ISSUE
B	82679	ID 479	Ø
SCALE	SHEET		OF

5

4

3

2

1

5

4

3

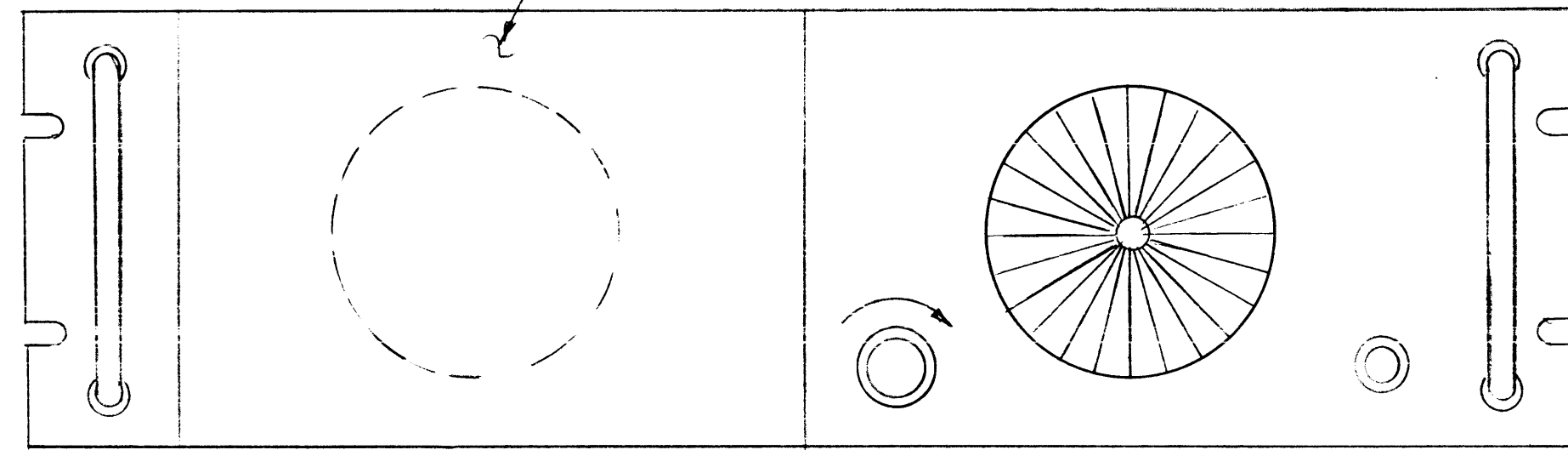
2

1

REVISIONS

E.M.N. NO.	DRAFT	CHKD	ZONE	LTR	DESCRIPTION	DATE	APPROVED
	GDL			Ø	ORIG. RELEASE FOR PRODUCTION	3-21-91	

COVER PLATE
PROVIDE BY THE COSTUMER



REQ'D	ITEM	PART NUMBER	DESCRIPTION	SYM.
LIST OF MATERIAL				
THE TECHNICAL MATERIEL CORP. MAMARONECK, NEW YORK				
BSP-152 IDENTIFICATION DWG				
SIZE	CODE IDENT. NO.	DWG NO.	ISSUE	
B	82679	ID 48		
SCALE			SHEET	OF

QTY / UNIT	MODEL USED ON	ASS'Y NO.
1	BSP-152	
APPLICATION		
	CODE	
<p>NOTICE TO PERSONS RECEIVING THIS DRAWING THE TECHNICAL MATERIEL CORPORATION claims proprietary right in the material disclosed hereon. This drawing is issued in confidence for engineering information only and may not be reproduced or used to manufacture anything shown hereon without permission from THE TECHNICAL MATERIEL CORPORATION to the user. This drawing is loaned for mutual assistance and is subject to recall at any time.</p>		

UNLESS OTHERWISE SPECIFIED DIMENSIONS ARE IN INCHES AND INCLUDE CHEMICALLY APPLIED OR PLATED FINISHES	
DECIMALS	FRACTIONS
.X ± .05	1/64
.XX ± .01	TOLS. ANGLES
.XXX ± .005	0° -30'
MATERIAL	
FINISH	

FINAL APPROVAL	DATE
<i>GDL</i>	3-21-91
MECH. DES.	DATE
ELECT. DES.	DATE
CHECKED	DATE
DRAWN	DATE
<i>GDL</i>	8-7-90

D

D

C

C

B

B

A

A

5

4

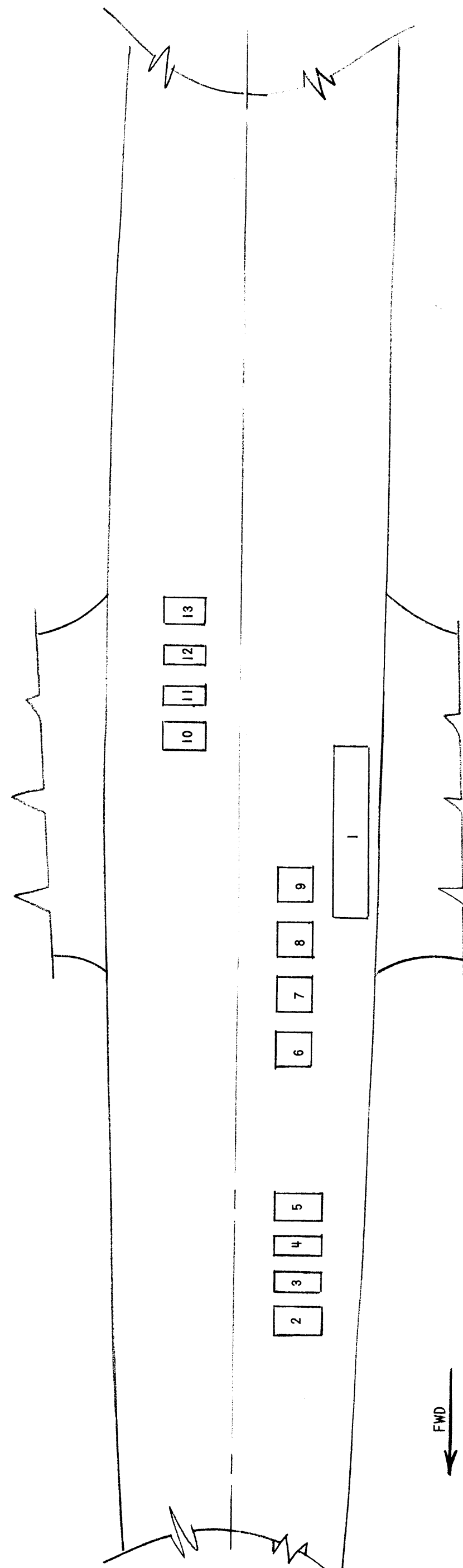
3

2

1

- 2. API39 BIAS MODULATOR SUPPLY - CHANNEL 1
- 3. API40 SCREEN SUPPLY - CHANNEL 1.
- 4. API40 SCREEN SUPPLY - CHANNEL 2
- 5. API39 BIAS MODULATOR SUPPLY - CHANNEL 2
- 6. AVI080 PLATE SUPPLY - CHANNEL 1.
- 7. AVI080 PLATE SUPPLY - CHANNEL 2.
- 8. AVI080 PLATE SUPPLY - CHANNEL 3.
- 9. AVI080 PLATE SUPPLY - CHANNEL 4.
- 10. API39 BIAS MODULATOR SUPPLY - CHANNEL 3.
- 11. API40 SCREEN SUPPLY - CHANNEL 3.
- 12. API40 SCREEN SUPPLY - CHANNEL 4.
- 13. API39 BIAS MODULATOR SUPPLY - CHANNEL 4.

NOTE: UNITS 2/13 LOCATED IN LOWER COMPARTMENT



ZONE	LTR	DESCRIPTION	DATE	E.M.N.N.
	X	EXPERIMENTAL RELEASE	11/26/68	X
	X1	UPDATED W/REV	5/10/69	X1
	Ø	ORIG RELEASE	3/11/69	Ø

REVISIONS

REQ'D ITEM	PART NUMBER	DESCRIPTION	SYM.
LIST OF MATERIAL			
THE TECHNICAL MATERIEL CORP. MAMARONECK, NEW YORK			
SPT-3KVHF UNIT LOCATIONS			
SIZE	CODE IDENT. NO.	DWG NO.	ISSU
B	82679	ID 8056	Ø
SCALE			SHEET OF
			1

UNLESS OTHERWISE SPECIFIED DIMENSIONS ARE IN INCHES AND INCLUDE CHEMICALLY APPLIED OR PLATED FINISHES	FINAL APPROVAL	DATE
	<i>[Signature]</i>	11/13/67
MECH. DES.	DATE	
ELECT. DES.	DATE	
CHECKED	DATE	
<i>[Signature]</i>	11/24/68	
DRAWN	DATE	

QTY / UNIT	MODEL USED ON	ASSY NO.
	APPLICATION	
	CODE	

NOTICE TO PERSONS RECEIVING THIS DRAWING
 THE TECHNICAL MATERIEL CORPORATION claims proprietary right in the material disclosed hereon. This drawing is issued in confidence for engineering information only and may not be reproduced or used to manufacture anything shown hereon without permission from THE TECHNICAL MATERIEL CORPORATION to the user. This drawing is loaned for mutual assistance and is subject to recall at any time.