

ID 300

| REVISIONS | | | | | | |
|-----------|---------------------------------|---------|------------|-------|------|------|
| SYM | DESCRIPTION | DATE | E.M.N. NO. | DRAFT | CHKD | APPD |
| Ø | ORIGINAL RELEASE FOR PRODUCTION | 3-15-66 | -A- | Jc | | |

| 1 | 12 | LWI50MRN | WASHER, LOCK, INT. TOOTH | |
|--------|------|--------------|--------------------------------|--------|
| 2 | 11 | NTH6218BN24 | NUT, HEXAGON, DOUBLE CHAMFER | |
| 1 | 10 | NTH5020BN24J | NUT, HEXAGON, DOUBLE CHAMFER | |
| 1 | 9 | BB106-3 | WASHER, THRUST | |
| 1 | 8 | BB122-2 | BUSHING, MACHINE, THREAD | |
| 1 | 7 | BB121-1 | BUSHING, MACHINE, THREAD | |
| 1 | 6 | PM572 | BUSHING, WORM GEAR STOP | |
| 1 | 5 | PM549 | MAIN SHAFT ANTENNA TUNER | |
| 1 | 4 | PM547 | VERTICAL SHAFT | |
| 1 | 3 | GR145 | GEAR, BEVEL | |
| 1 | 2 | GR141-2 | GEAR, BEVEL | |
| 1 | 1 | MS1538 | BRACKET SUPPORT, RT. ANGLE DR. | |
| REQ'D. | ITEM | PART NUMBER | DESCRIPTION | SYMBOL |

LIST OF MATERIAL

| | | | | |
|---|--|---|--------------------------------------|-----------------|
| MATERIAL | THE TECHNICAL MATERIEL CORP. MAMARONECK, NEW YORK | | | |
| FINISH | TITLE INSTALLATION DETAIL, ANTENNA TUNER GEARS | | | |
| UNLESS OTHERWISE SPECIFIED DIMENSIONS ARE IN INCHES AND INCLUDE CHEMICALLY APPLIED OR PLATED FINISHES | DRAWN J. LESHINSKI | DATE 3/14/66 | FINAL APPROVAL <i>[Signature]</i> | DATE 3/15/66 |
| | CHECKED <i>[Signature]</i> | DATE 3-14-66 | | |
| DECIMALS .X ± .05 .XX ± .01 .XXX ± .005 | TOLERANCES | FRACTIONS ± 1/64 ANGLES ± 0° 30' | ELECT. DES. <i>[Signature]</i> | |
| | | MECH. DES. <i>[Signature]</i> | | DATE 3-14-66 |
| | | | DATE | REV. LTR. |
| | | | SHEET | Ø |

| | | |
|---|---------------|------------|
| 1 | GPT-10K()8 | AX 509 |
| Q'TY./UNIT | MODEL USED ON | ASS'Y. NO. |
| SCALE | CODE | |
| THE CONTENTS OF THIS DRAWING ARE THE EXCLUSIVE PROPERTY OF THE TECHNICAL MATERIEL CORP. ITS UNAUTHORIZED USE OR REPRODUCTION IN WHOLE OR IN PART IS STRICTLY FORBIDDEN. | | |

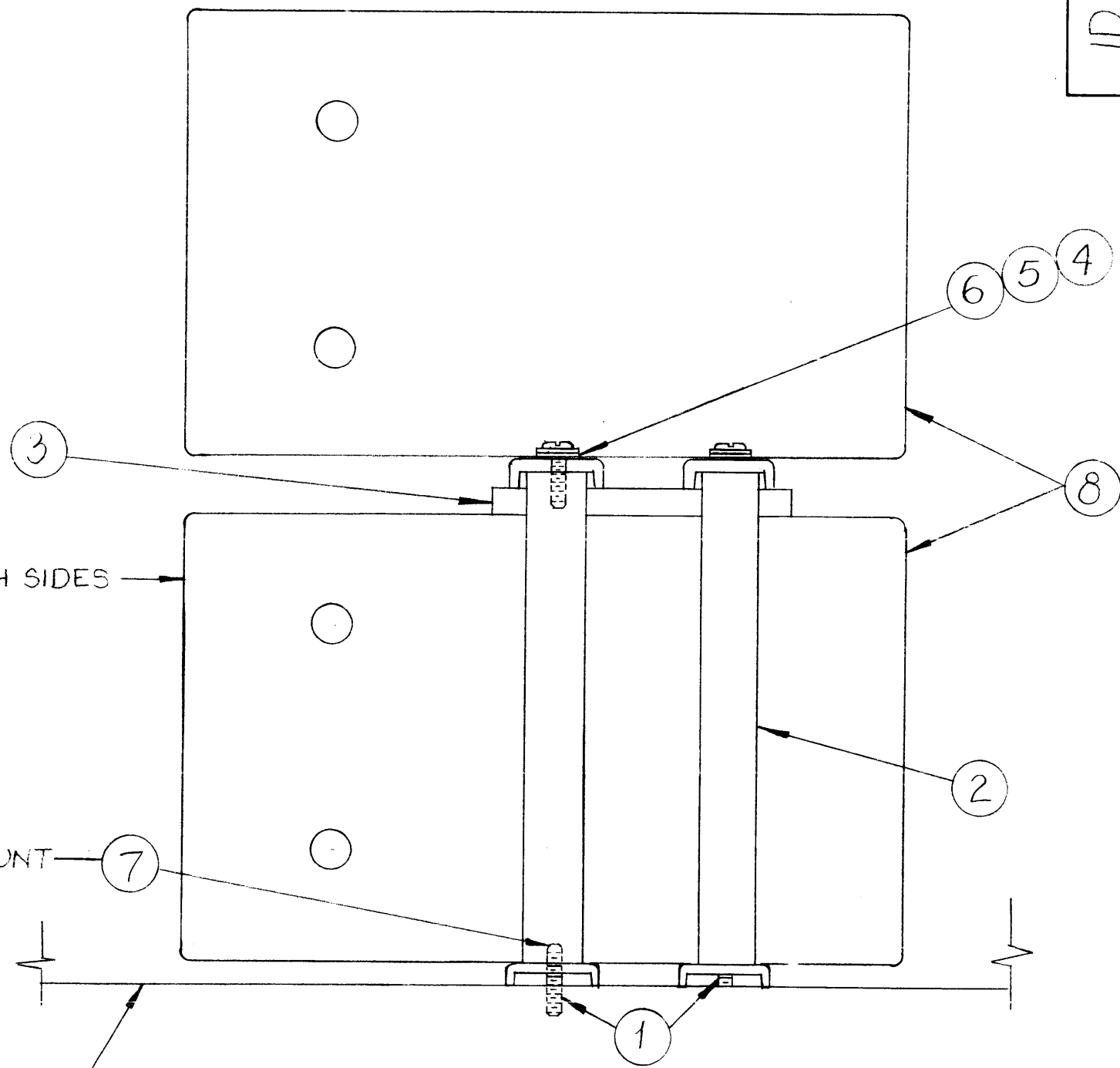
NOTES

ML 25 3/15/66

ID 301

REVISIONS

| SYM | DESCRIPTION | DATE | E.M.N. NO. | DRAFT | CHKD | APPD |
|-----|---------------------------------|---------|------------|-------|------|------|
| Ø | ORIGINAL RELEASE FOR PRODUCTION | 4-12-66 | Ø | GDL | | JL |



TYP BOTH SIDES

APPLY & MOUNT

Ø AUXILIARY FRAME

| REQ'D. | ITEM | PART NUMBER | DESCRIPTION | SYMBOL |
|--------|------|---------------|-----------------------------|--------|
| 2 | 8 | TF275 | XFMR, PWR, FWD AUTO | |
| 4 | 7 | GL105 | LACQUER, VARN, OIL | |
| 4 | 6 | FW25HBN | WASHER, FLAT | |
| 4 | 5 | LWS25MRN | LOCKWASHER, SPLIT | |
| 4 | 4 | SCHH2520BN16 | SCREW, HEX HEAD | |
| 1 | 3 | RY157-1 | 3/16 NEOPRENE, 4 X 6 | |
| 4 | 2 | TE 2520 AE90R | STANDOFF, VOLTAGE REGULATOR | |
| 4 | 1 | SM2520SN2.500 | 1/4-20X THD ROD 2 1/2 | |

| BUDETTI | | LIST OF MATERIAL | | | |
|---|--|--|-----------------|--------------------------------------|----------------|
| MATERIAL | | THE TECHNICAL MATERIEL CORP. MAMARONECK, NEW YORK | | | |
| FINISH | | TITLE TF 275 INSTALLATION | | | |
| UNLESS OTHERWISE SPECIFIED DIMENSIONS ARE IN INCHES AND INCLUDE CHEMICALLY APPLIED OR PLATED FINISHES | | DRAWN wtw | DATE 3/29/66 | FINAL APPROVAL <i>[Signature]</i> | DATE 4/7/66 |
| DECIMALS .X ± .05 .XX ± .01 .XXX ± .005 | | CHECKED JLB | DATE 4-7-66 | ID 301 | Ø |
| FRACTIONS ± 1/64 ANGLES ± 0° 30' | | ELECT. DES QA | DATE | | |
| TOLERANCES | | MECH. DES QR | DATE | | |
| | | SHEET | | | REV. LTR. |

| Q'TY./UNIT | MODEL USED ON | ASS'Y. NO. |
|-------------|---------------|------------|
| 1 | GPT10KAV7 | |
| SCALE | CODE | |
| NO TO SCALE | | |

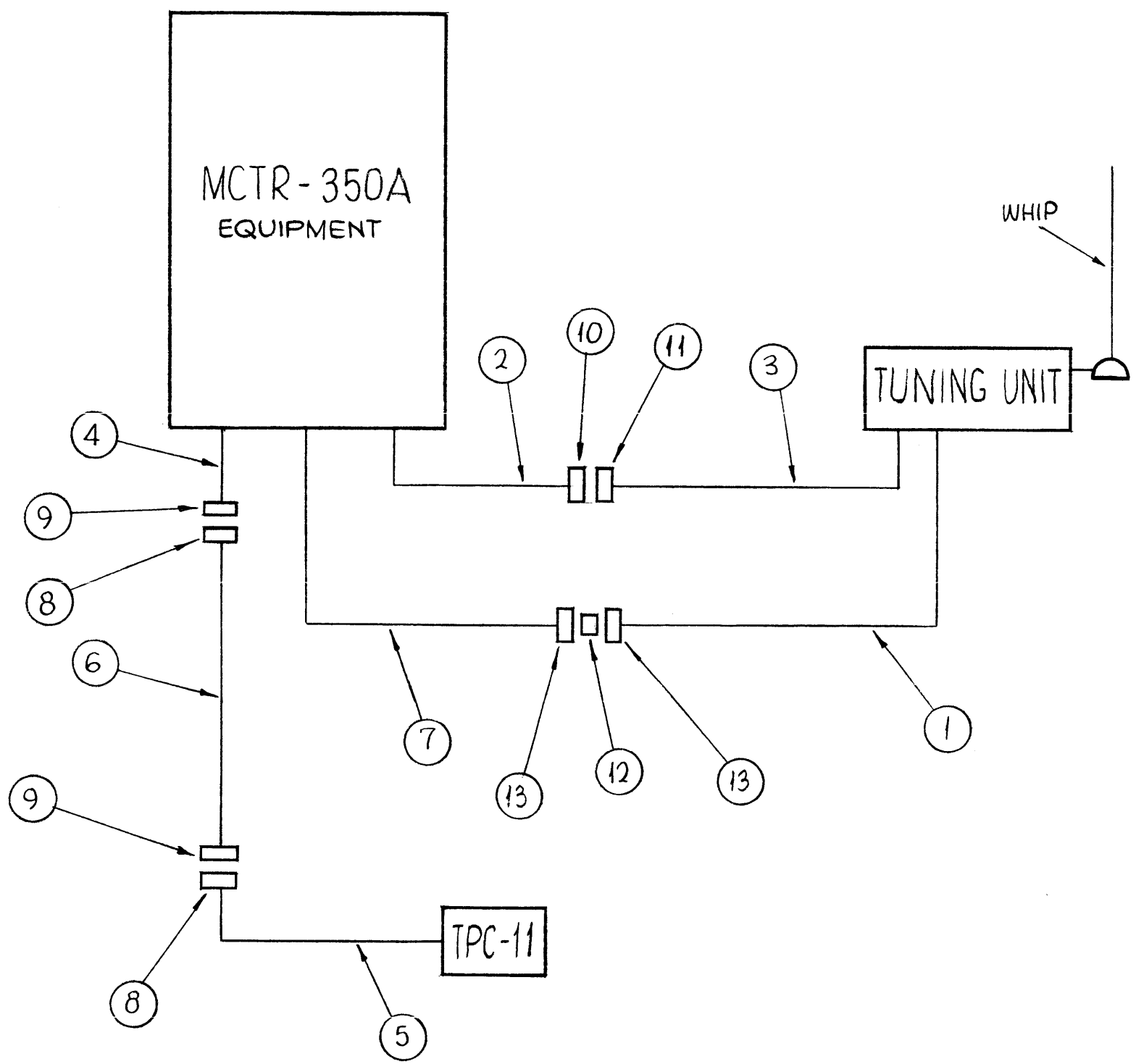
THE CONTENTS OF THIS DRAWING ARE THE EXCLUSIVE PROPERTY OF THE TECHNICAL MATERIEL CORP. ITS UNAUTHORIZED USE OR REPRODUCTION IN WHOLE OR IN PART IS STRICTLY FORBIDDEN.

NOTES

ID 302

REVISIONS

| SYM | DESCRIPTION | DATE | E.M.N. NO. | DRAFT | CHKD | APPD |
|-----|---------------------------------|----------|------------|-------|------|------|
| X | EXP. RELEASE | 12-28-64 | X | SRG | | |
| Ø | ORIGINAL RELEASE FOR PRODUCTION | 1.6.65 | Ø | SRB | | |



| REQ'D. | ITEM | PART NUMBER | DESCRIPTION | SYMBOL |
|--------|------|------------------|------------------------------|--------|
| 2 | 13 | UG 59C | PLUG, CONNECTOR SERIES HN | |
| 1 | 12 | JJ 320 | ADAPTER, BULKHEAD HN | |
| 1 | 11 | MS 3106 A 20-27P | CONNECTOR, PLUG, MALE | |
| 1 | 10 | MS 3102 A 20-27S | CONNECTOR, RECEPTACLE FEMALE | |
| 2 | 9 | PL 248 | CONNECTOR, PLUG, FEMALE | |
| 2 | 8 | PL 212-3 | CONNECTOR, PLUG, MALE | |
| 1 | 7 | CA 480-120-12F | CABLE, RF | |
| 1 | 6 | CA 965 | CABLE, INTERCONNECT | |
| 1 | 5 | CA 963 | HARNESS, WIRING | |
| 1 | 4 | CA 960 | HARNESS, WIRING, MAIN | |
| 1 | 3 | CA 541-100F | CABLE, ASS'Y | |
| 1 | 2 | CA 978-144 | CABLE ASS'Y, SPECIAL PURPOSE | |
| 1 | 1 | CA 480-125-100F | CABLE ASS'Y RF | |

F. BUDETTI

LIST OF MATERIAL

MATERIAL _____

FINISH _____

TITLE: THE TECHNICAL MATERIEL CORP. MAMARONECK, NEW YORK

INSTALLATION INSTRUCTIONS

UNLESS OTHERWISE SPECIFIED DIMENSIONS ARE IN INCHES AND INCLUDE CHEMICALLY APPLIED OR PLATED FINISHES

DECIMALS: .X ± .05, .XX ± .01, .XXX ± .005

FRACTIONS: ± 1/64, ANGLES: ± 0° 30'

TOLERANCES

DRAWN: SRG, DATE: 12-29-64

CHECKED: @, DATE: 1/6/65

ELECT. DES.: R.J., DATE: 1/6/65

MECH. DES.: DATE: _____

FINAL APPROVAL: [Signature], DATE: _____

ID 302

SHEET: _____

REV. LTR.: Ø

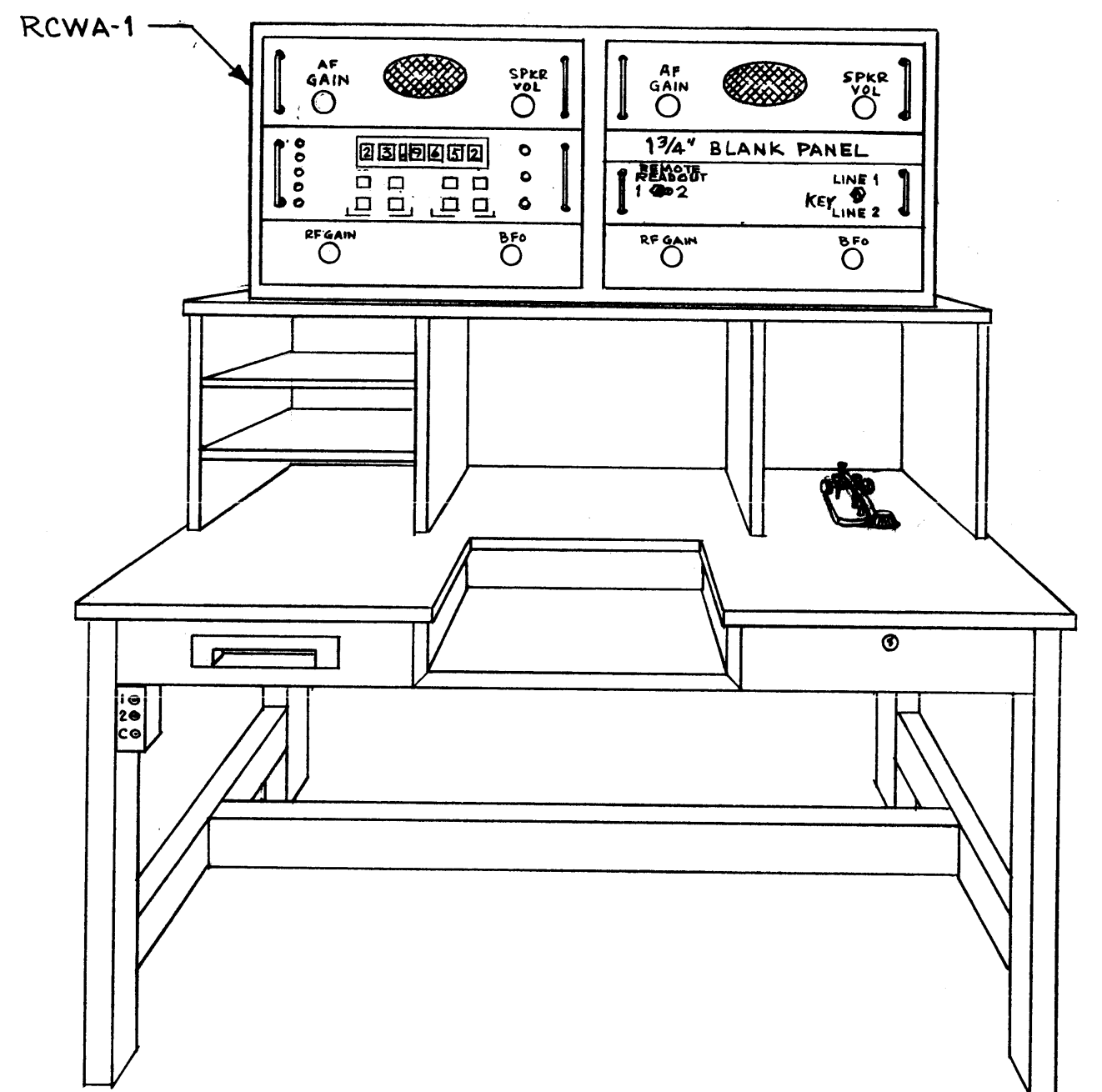
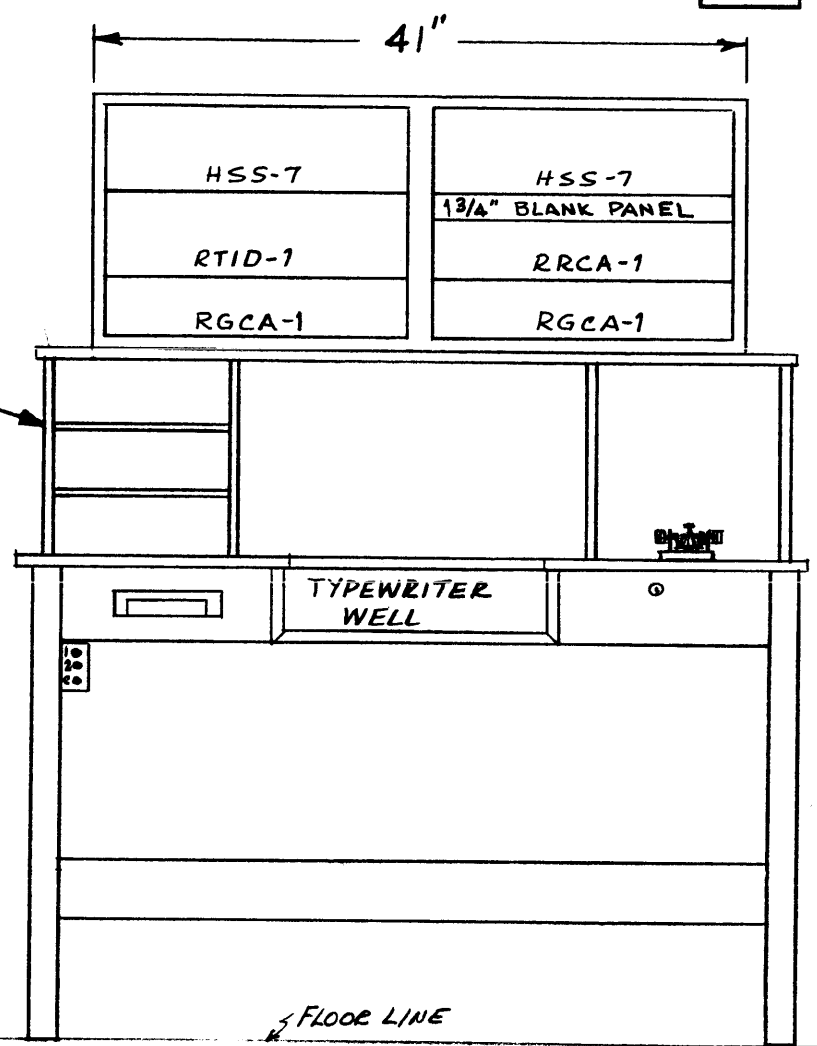
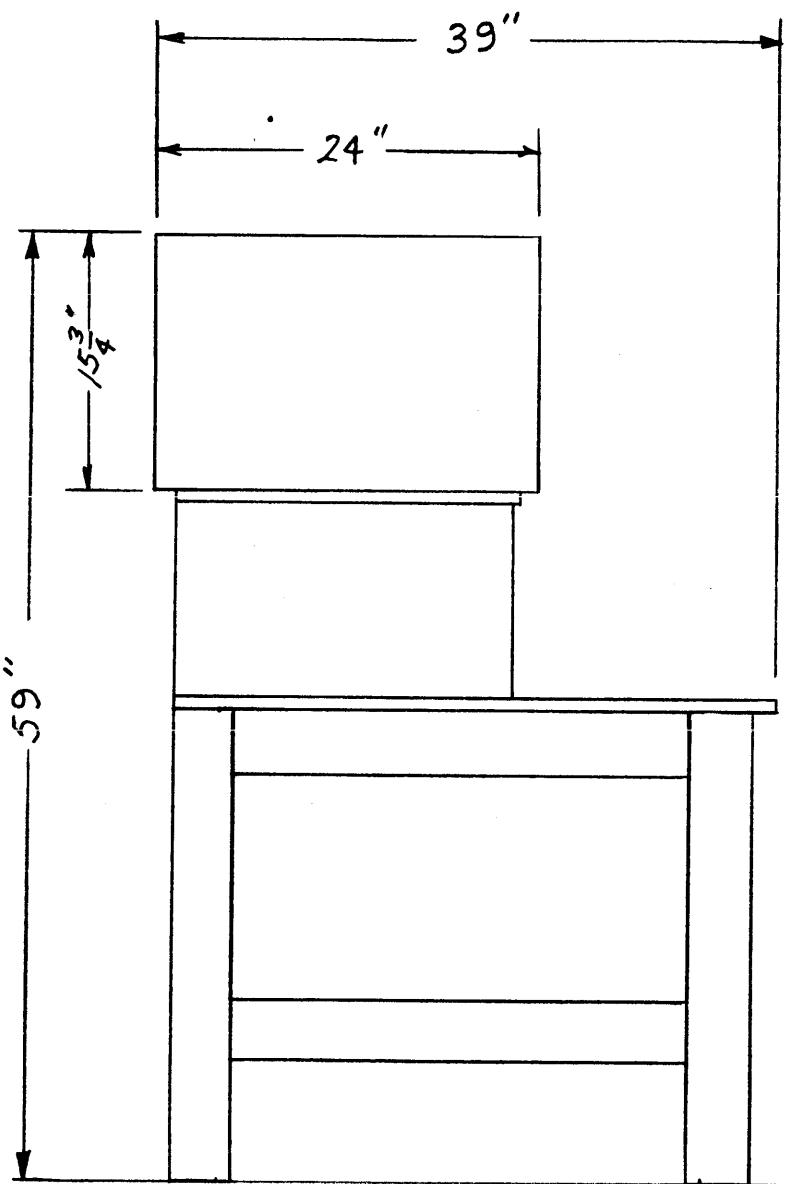
| Q'TY./UNIT | MODEL USED ON | ASS'Y. NO. |
|------------|---------------|------------|
| --- | --- | --- |

THE CONTENTS OF THIS DRAWING ARE THE EXCLUSIVE PROPERTY OF THE TECHNICAL MATERIEL CORP. ITS UNAUTHORIZED USE OR REPRODUCTION IN WHOLE OR IN PART IS STRICTLY FORBIDDEN.

NOTES

ID 308

| REVISIONS | | | | | |
|-----------|---------------------------------|---------|------------|-------|-----------|
| SYM | DESCRIPTION | DATE | E.M.N. NO. | DRAFT | CHKD APPD |
| Ø | ORIGINAL RELEASE FOR PRODUCTION | 7-24-65 | Ø | 2f | |



NOTE:
DESK FURNISHED BY CUSTOMER

| REQ'D. | ITEM | PART NUMBER | DESCRIPTION | SYMBOL |
|---|------|-------------|---|------------------------|
| LIST OF MATERIAL | | | | |
| | | | | 4012-4 |
| MATERIAL | | | THE TECHNICAL MATERIEL CORP. MAMARONECK, NEW YORK | |
| FINISH | | | TITLE PROPOSED OPERATING POSITION MODEL RCWA-1 | |
| UNLESS OTHERWISE SPECIFIED DIMENSIONS ARE IN INCHES AND INCLUDE CHEMICALLY APPLIED OR PLATED FINISHES | | | DRAWN M. TANTILLO | DATE 6-22-64 |
| | | | CHECKED | DATE |
| DECIMALS .X ± .05 .XX ± .01 .XXX ± .005 | | | ELECT. DES. | DATE |
| | | | MECH. DES. | DATE |
| TOLERANCES ± 1/64 ANGLES ± 0° 30' | | | ID 308 | |
| | | | SHEET | |

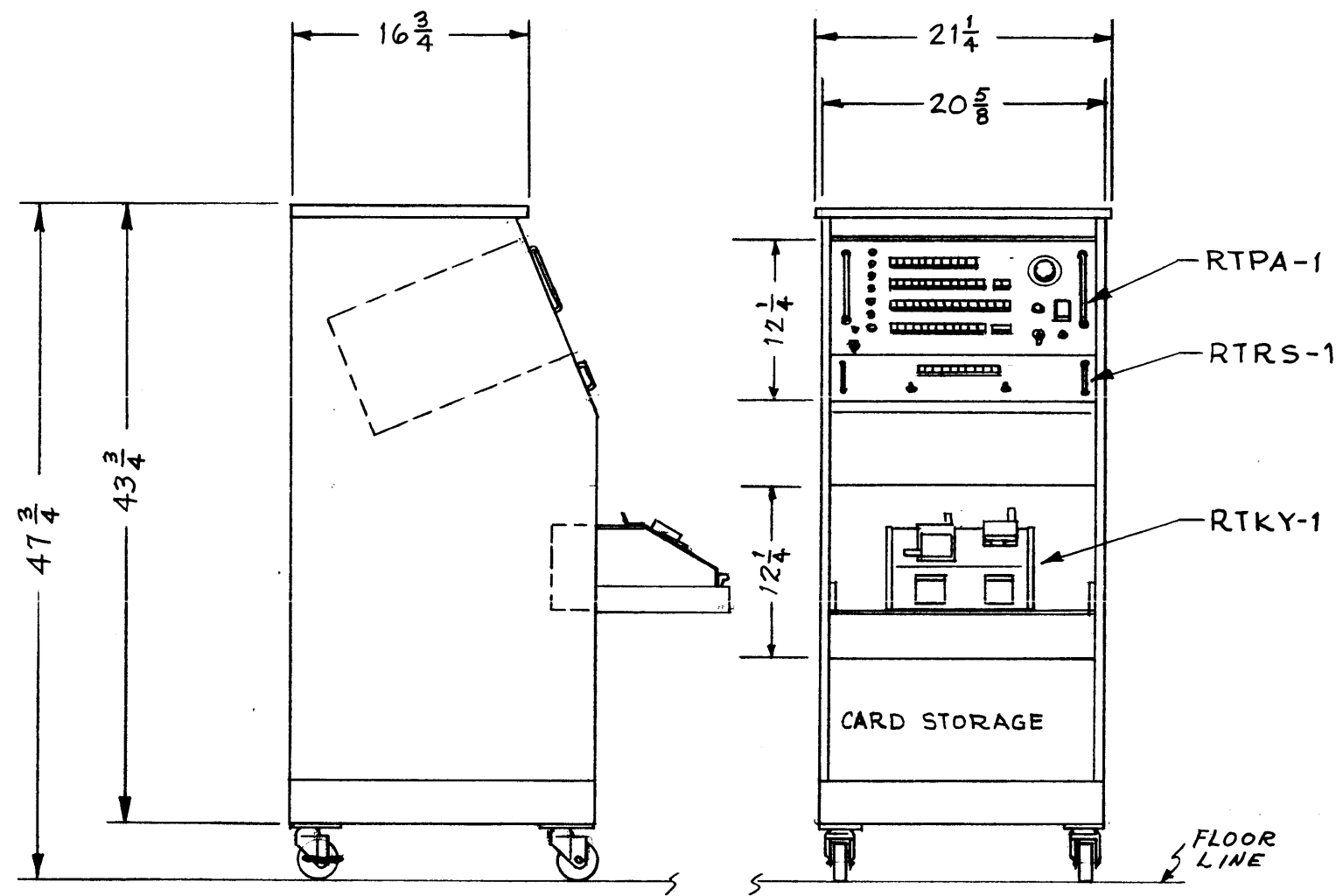
| RCWA-1 | | |
|---|---------------|------------|
| Q'TY./UNIT | MODEL USED ON | ASS'Y. NO. |
| SCALE | CODE | |
| THE CONTENTS OF THIS DRAWING ARE THE EXCLUSIVE PROPERTY OF THE TECHNICAL MATERIEL CORP. ITS UNAUTHORIZED USE OR REPRODUCTION IN WHOLE OR IN PART IS STRICTLY FORBIDDEN. | | |

NOTES

ID 309

REVISIONS

| SYM | DESCRIPTION | DATE | E.M.N. NO. | DRAFT | CHKD | APPD |
|-----|---------------------------------|---------|------------|-------|------|------|
| Ø | ORIGINAL RELEASE FOR PRODUCTION | 3-24-65 | Ø | Ø | | |



WIRING INFORMATION
 AC POWER AND DC 60 MA SIGNAL CORD SHOULD BE FLEXIBLE AND SHOULD NOT EXCEED 25 FEET. CABLE END FITTINGS TO CONNECT TO PTCA-1 PROVIDED.

POWER: APPROX. 100 WATTS

| REQ'D. | ITEM | PART NUMBER | DESCRIPTION | SYMBOL |
|---|------|-------------|--|--------------|
| LIST OF MATERIAL 4012-5 | | | | |
| MATERIAL | | | THE TECHNICAL MATERIEL CORP. MAMARONECK, NEW YORK | |
| FINISH | | | TITLE PTCA-1, PORTABLE PROGRAMMER FACILITY | |
| UNLESS OTHERWISE SPECIFIED DIMENSIONS ARE IN INCHES AND INCLUDE CHEMICALLY APPLIED OR PLATED FINISHES | | | DRAWN M TANTILLO | DATE 6-24-64 |
| | | | CHECKED | DATE |
| DECIMALS .X ± .05 .XX ± .01 .XXX ± .05 | | | ELECT. DES. | DATE |
| | | | MECH. DES. | DATE |
| TOLERANCES | | | ID 309 | |
| FRACTIONS ± 1/64 ANGLES ± 0° 30' | | | REV. LTR. Ø | |

| PTCA-1 | | ASS'Y. NO. |
|---|---------------|------------|
| Q'TY./UNIT | MODEL USED ON | |
| SCALE | CODE | |
| THE CONTENTS OF THIS DRAWING ARE THE EXCLUSIVE PROPERTY OF THE TECHNICAL MATERIEL CORP. ITS UNAUTHORIZED USE OR REPRODUCTION IN WHOLE OR IN PART IS STRICTLY FORBIDDEN. | | |

NOTES

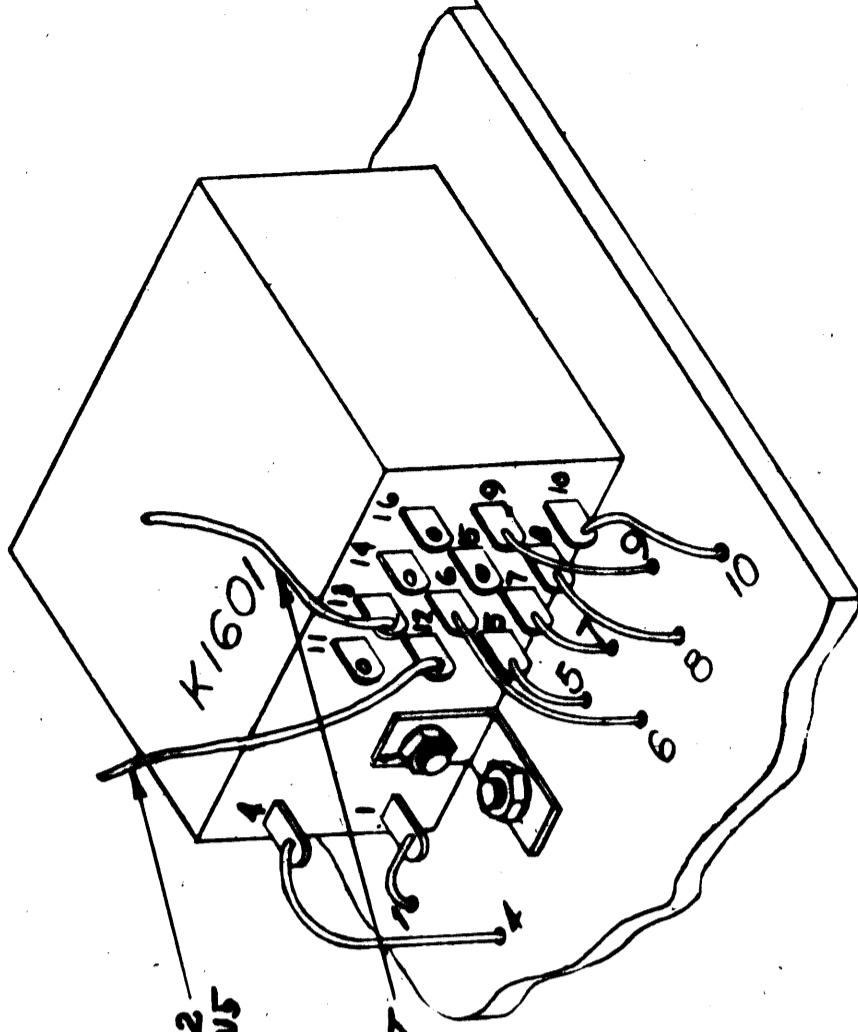
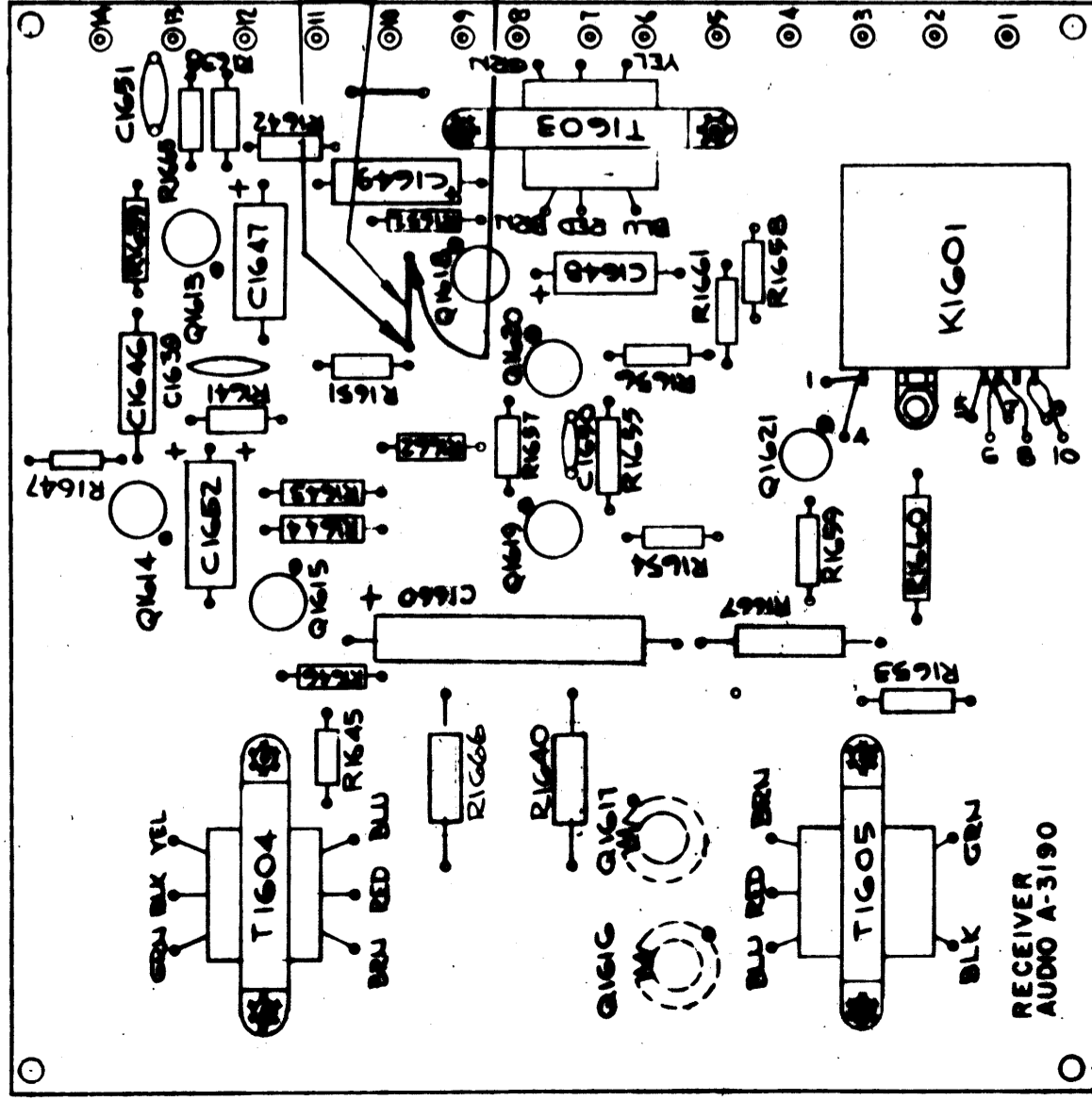
ENGINEERING SKETCH

NOT FOR PRODUCTION

REVISIONS

| REV | DESCRIPTION | DATE | BY | CHKD | APPD |
|-----|---------------------------------|---------|-----|------|------|
| X | EXPERIMENTAL RELEASE | 2/17/45 | ALC | | |
| Z | ORIGINAL RELEASE FOR PRODUCTION | | | | |

ID 318



CONNECT THIS END TO CONTACT #12 OF K1601 BY 4" LENGTH AWC22(7)U5 REMOVE JUMPER

CONNECT THIS END TO CONTACT #13 OF K1601 BY 4" LENGTH OF AWC22(7)U7

| QTY | ITEM | PART NUMBER | DESCRIPTION | SYMBOL |
|-----|------|-------------|-----------------|--------|
| 4" | 3 | AWC 22(7)U7 | WIRE, INSULATED | WIRE |
| 4" | 2 | AWC 22(7)U5 | WIRE, INSULATED | WIRE |
| 1 | 1 | A3190-5 | CIRCUIT BOARD | BOARD |

LIST OF MATERIAL

MATERIAL THE TECHNICAL MATERIEL CORP. BAHAMONCK, NEW YORK

TITLE SQUELCH MODIFICATION INSTRUCTIONS - A3190

DATE 2-17-65

DATE 8/17/67

DATE ID 318

SCALE 1/8" = 1"

DATE 2-17-65

BY S.M.

CHKD S.M.

APPD S.M.

UNLESS OTHERWISE SPECIFIED DIMENSIONS ARE IN INCHES AND INCLUDE CHEMICALLY APPLIED OR PLATED FINISHES

TOLERANCES ± 1/64 ANGLES ± 0.50

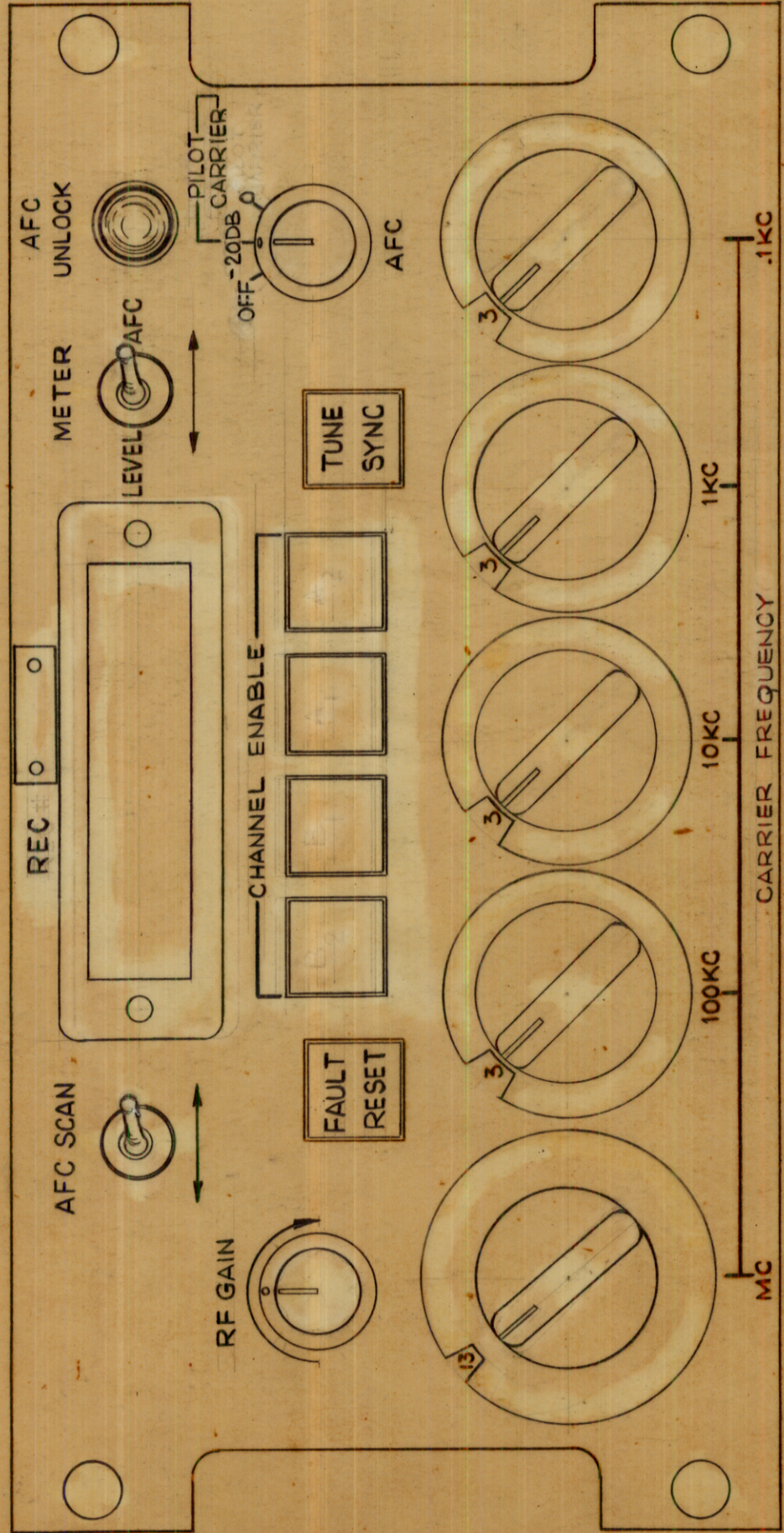
NOTES

THE CONTENTS OF THIS DRAWING ARE THE EXCLUSIVE PROPERTY OF THE TECHNICAL MATERIEL CORP. ITS UNAUTHORIZED USE OR REPRODUCTION IN WHOLE OR IN PART IS STRICTLY FORBIDDEN.

REVISIONS
 DESCRIPTION
 ORIGINAL RELEASE FOR PRODUCTION

| | | | | |
|---------|------------|-------|------|------|
| DATE | E.M.N. NO. | DRAFT | CHKD | APPD |
| 4/26/65 | | ALA | | |

8 ID 319



| | | | | |
|--|------|-----------------|-------------------------------|-----------------|
| REQ'D. | ITEM | PART NUMBER | DESCRIPTION | SYMBOL |
| ZETENA | | | LIST OF MATERIAL | |
| THE TECHNICAL MATERIEL CORP. MAMARONECK, NEW YORK | | | | |
| CONTROL PANEL, RECEIVER | | | | |
| DRAWN H. AUSTIN | | DATE 3-10-65 | FINAL APPROVAL J.E. Easton | DATE 4/27/65 |
| CHECKED J.B. | | DATE 4/27/65 | ID 319 | |
| ELECT. DES. | | DATE | SHEET | |
| MECH. DES. | | DATE | REV. LTR. | |

| | |
|---|---|
| UNLESS OTHERWISE SPECIFIED DIMENSIONS ARE IN INCHES AND INCLUDE CHEMICALLY APPLIED OR PLATED FINISHES | FRACTIONS ± 1/64 ANGLES ± 0° 30' |
| DECIMALS .X ± .05 .XX ± .01 .XXX ± .005 | TOLERANCES |

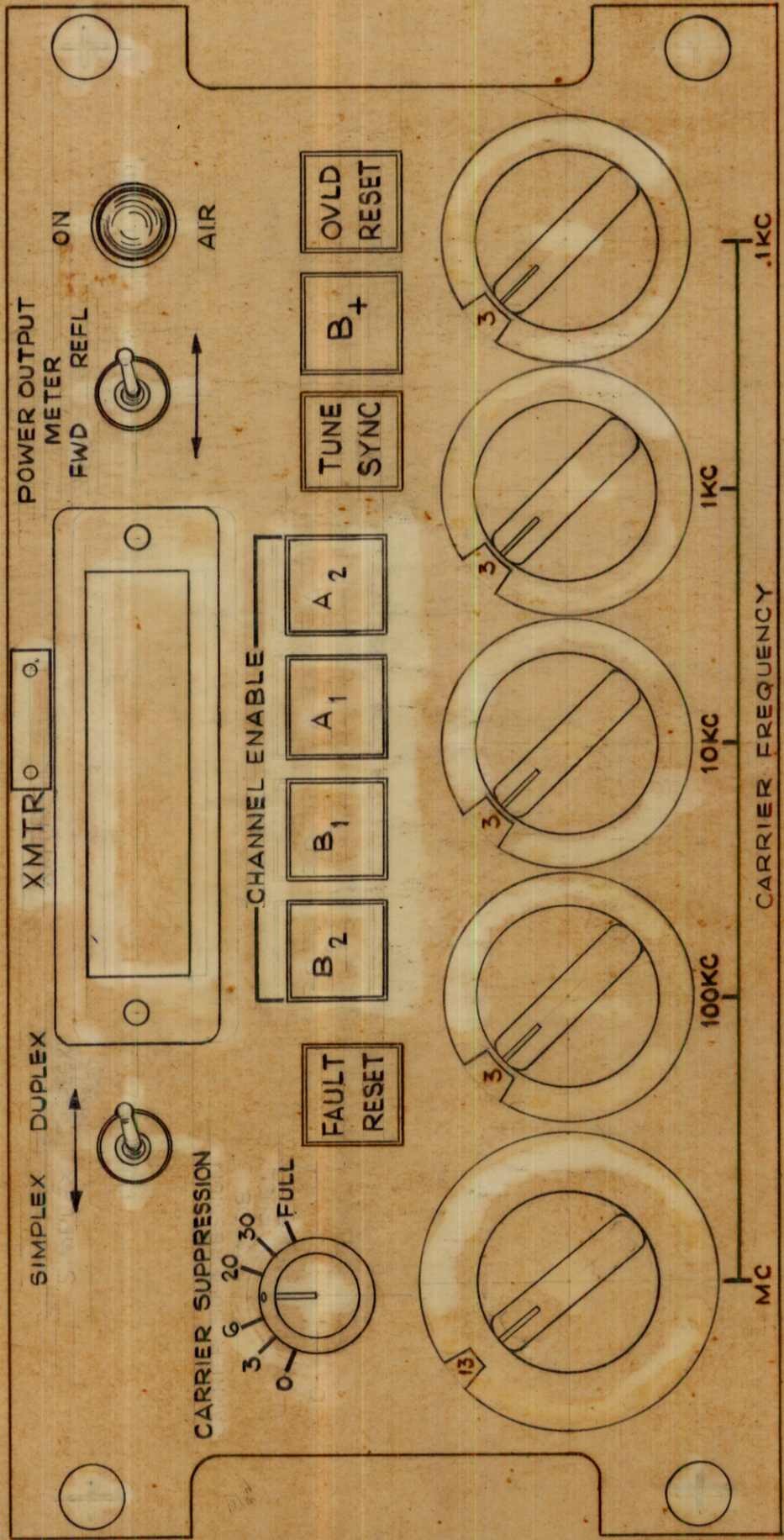
| | | |
|---|---------------|-----------|
| QTY./UNIT SCALE | MODEL USED ON | ASSY. NO. |
| 8 | LRCC-1 | |
| THE CONTENTS OF THIS DRAWING ARE THE EXCLUSIVE PROPERTY OF THE TECHNICAL MATERIEL CORP. ITS UNAUTHORIZED USE OR REPRODUCTION IN WHOLE OR IN PART IS STRICTLY FORBIDDEN. | | |

NOTES

REVISIONS

| SYM | DESCRIPTION | DATE | E.M.N. NO. | DRAFT | CHKD | APPD |
|-----|---------------------------------|---------|------------|-------|------|------|
| Ø | ORIGINAL RELEASE FOR PRODUCTION | 4/26/65 | | HHA | | |

ID 320

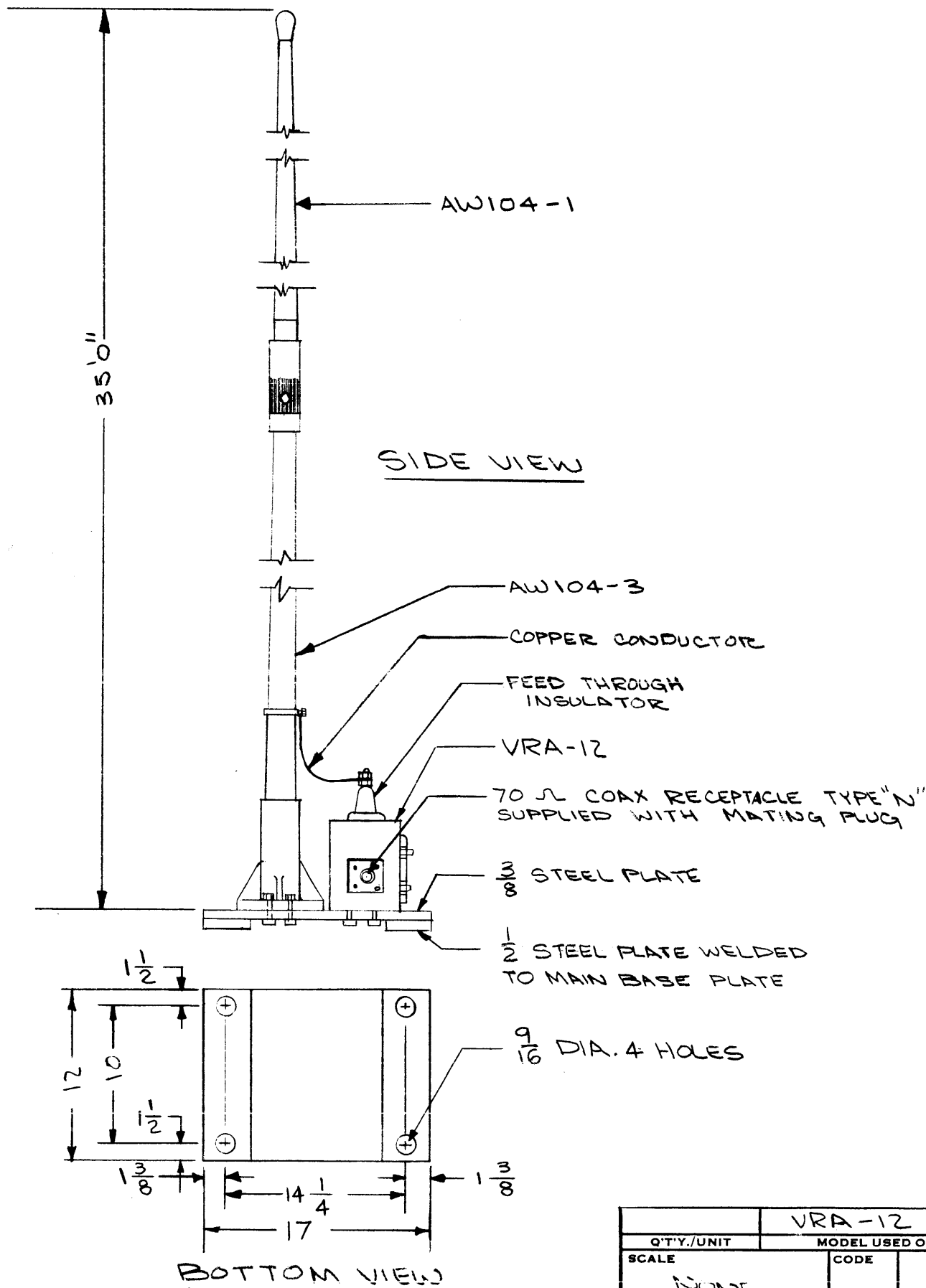


| | | | | | | | | | | | | | | | | | | | | | | | | | | | | | | | | |
|-------------|-----------|-------------|---|----------------|-----------|---------|-----------|----------------|--------|------------|---------|-----|----------|---------|--|--|--|-------------|--|------|--|--|--|--|------------|--|------|--|--|--|--|--|
| REQ'D. | ITEM | PART NUMBER | DESCRIPTION | SYMBOL | | | | | | | | | | | | | | | | | | | | | | | | | | | | |
| | ZETENA | | LIST OF MATERIAL | | | | | | | | | | | | | | | | | | | | | | | | | | | | | |
| | MATERIAL | | THE TECHNICAL MATERIEL CORP. MAMARONECK, NEW YORK | | | | | | | | | | | | | | | | | | | | | | | | | | | | | |
| | FINISH | | CONTROL PANEL, TRANSMITTER | | | | | | | | | | | | | | | | | | | | | | | | | | | | | |
| | | | <table border="1"> <tr> <td>DRAWN</td> <td>H. AUSTIN</td> <td>DATE</td> <td>3-10-65</td> <td>FINAL APPROVAL</td> <td>DATE</td> <td>4/28/65</td> </tr> <tr> <td>CHECKED</td> <td>JCB</td> <td>DATE</td> <td>4/27/65</td> <td></td> <td></td> <td></td> </tr> <tr> <td>ELECT. DES.</td> <td></td> <td>DATE</td> <td></td> <td></td> <td></td> <td></td> </tr> <tr> <td>MECH. DES.</td> <td></td> <td>DATE</td> <td></td> <td></td> <td></td> <td></td> </tr> </table> | DRAWN | H. AUSTIN | DATE | 3-10-65 | FINAL APPROVAL | DATE | 4/28/65 | CHECKED | JCB | DATE | 4/27/65 | | | | ELECT. DES. | | DATE | | | | | MECH. DES. | | DATE | | | | | |
| DRAWN | H. AUSTIN | DATE | 3-10-65 | FINAL APPROVAL | DATE | 4/28/65 | | | | | | | | | | | | | | | | | | | | | | | | | | |
| CHECKED | JCB | DATE | 4/27/65 | | | | | | | | | | | | | | | | | | | | | | | | | | | | | |
| ELECT. DES. | | DATE | | | | | | | | | | | | | | | | | | | | | | | | | | | | | | |
| MECH. DES. | | DATE | | | | | | | | | | | | | | | | | | | | | | | | | | | | | | |
| | | | UNLESS OTHERWISE SPECIFIED DIMENSIONS ARE IN INCHES AND INCLUDE CHEMICALLY APPLIED OR PLATED FINISHES. | | | | | | | | | | | | | | | | | | | | | | | | | | | | | |
| | | | <table border="1"> <tr> <td>DECIMALS</td> <td></td> </tr> <tr> <td>X ± .05</td> <td>FRACTIONS</td> </tr> <tr> <td>XX ± .01</td> <td>± 1/64</td> </tr> <tr> <td>XXX ± .005</td> <td>ANGLES</td> </tr> <tr> <td></td> <td>± 0° 30'</td> </tr> </table> | DECIMALS | | X ± .05 | FRACTIONS | XX ± .01 | ± 1/64 | XXX ± .005 | ANGLES | | ± 0° 30' | | | | | | | | | | | | | | | | | | | |
| DECIMALS | | | | | | | | | | | | | | | | | | | | | | | | | | | | | | | | |
| X ± .05 | FRACTIONS | | | | | | | | | | | | | | | | | | | | | | | | | | | | | | | |
| XX ± .01 | ± 1/64 | | | | | | | | | | | | | | | | | | | | | | | | | | | | | | | |
| XXX ± .005 | ANGLES | | | | | | | | | | | | | | | | | | | | | | | | | | | | | | | |
| | ± 0° 30' | | | | | | | | | | | | | | | | | | | | | | | | | | | | | | | |
| | | | TOLERANCES | | | | | | | | | | | | | | | | | | | | | | | | | | | | | |

| | | | |
|-----------|-------|---------------|-----------|
| QTY./UNIT | SCALE | MODEL USED ON | ASSY. NO. |
| 6 | | LRM-1 | |
| | | CODE | |

NOTES

THE CONTENTS OF THIS DRAWING ARE THE EXCLUSIVE PROPERTY OF THE TECHNICAL MATERIEL CORP. ITS UNAUTHORIZED USE OR REPRODUCTION IN WHOLE OR IN PART IS STRICTLY FORBIDDEN.



SIDE VIEW

BOTTOM VIEW

NOTES

| | | | | |
|---|--|---------------|--|------------|
| QTY./UNIT | | VRA-12 | | ASS'Y. NO. |
| SCALE | | MODEL USED ON | | |
| NONE | | CODE | | |
| THE CONTENTS OF THIS DRAWING ARE THE EXCLUSIVE PROPERTY OF THE TECHNICAL MATERIEL CORP. ITS UNAUTHORIZED USE OR REPRODUCTION IN WHOLE OR IN PART IS STRICTLY FORBIDDEN. | | | | |

ID347

REVISIONS

| SYM | DESCRIPTION | DATE | E.M.N. NO. | DRAFT | CHKD | APPD |
|-----|--|---------|------------|--------|--------------------|--------------------|
| Ø | ORIGINAL RELEASE FOR PRODUCTION | 8/27/65 | Ø | RVV | | |
| A | FREQUENCY RESPONSE WAS 100 kc/s - 25 mc/s. SYSTEM RESPONSE NOTE CHANGED. | 3-16-67 | 17982 | L.A.K. | <i>[Signature]</i> | <i>[Signature]</i> |

WIDEBAND RECEIVING WHIP ANTENNA SYSTEM

THE ANTENNA SYSTEM IS TO CONSIST OF A 35 FOOT FIBERGLASS WHIP WITH A COUPLING TRANSFORMER SO DESIGNED AS TO MATCH THE CHARACTERISTIC IMPEDANCE OF THE WHIP ANTENNA.

- FREQUENCY RANGE - 15 kc/s - 300 KCS
- PATTERN - OMNI-DIRECTIONAL
- SYSTEM RESPONSE - OVER THE FREQUENCY RANGE THE MATCHING TRANSFORMER WHEN TERMINATED IN A 70 OHM LOAD SHALL PROVIDE A GAIN OF 6 db OVER THE SAME WHIP WHEN CONNECTED DIRECTLY TO A 70 OHM LOAD.

- OUTPUT TERMINATION - 70 OHMS NOMINAL
- POWER RATING - NOT LESS THAN 30 WATTS
- WIND AND ICE LOADING - CAPABLE OF WITHSTANDING 85 m.p.h. WITH 1/2" RADIAL ICE LOADING.
- WEATHERPROOFING - SEALED AGAINST ENTRY OF SNOW, RAIN, OR INSECTS.

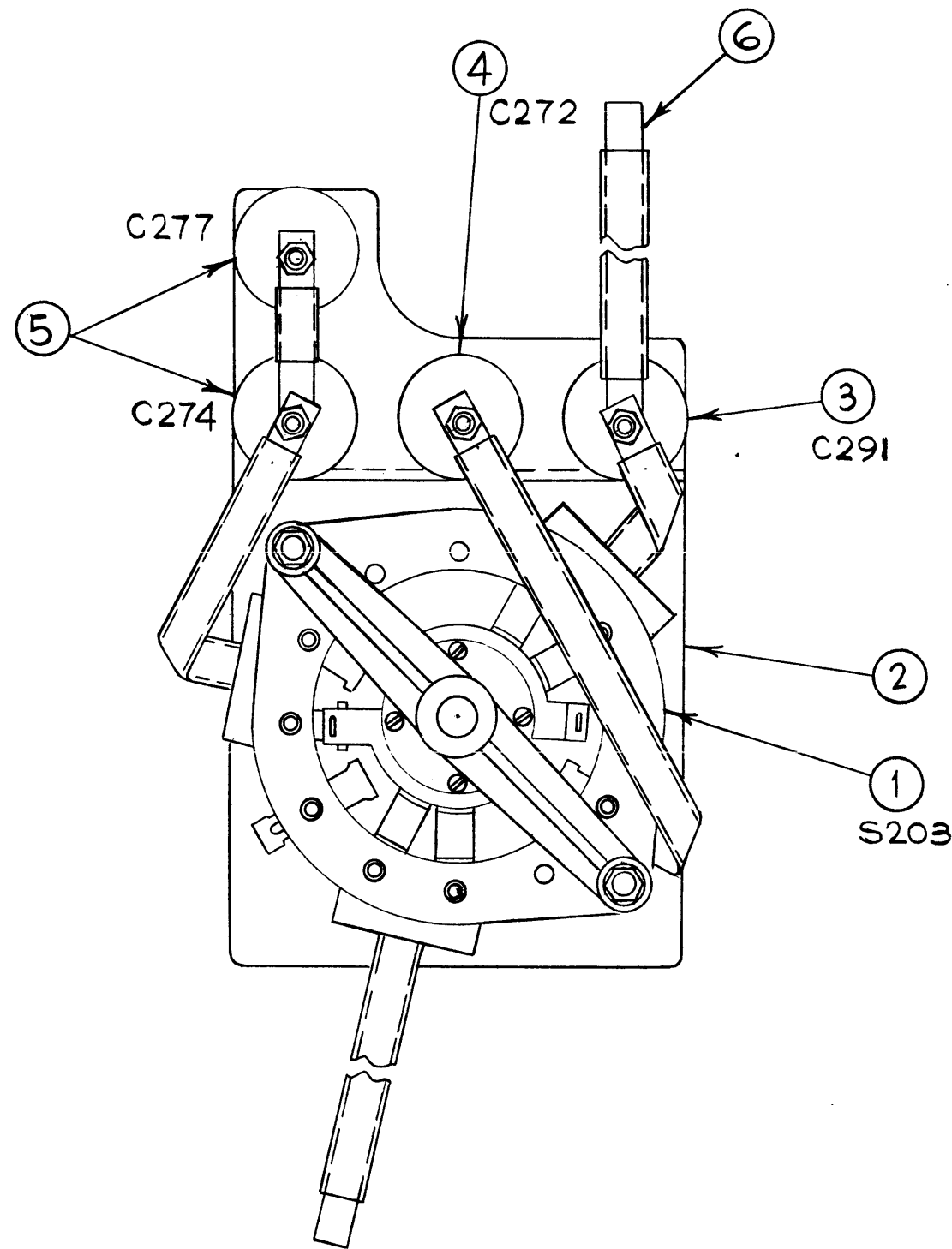
WHIP ANTENNA CONSTRUCTION - SELF SUPPORTING VERTICAL, 35 FOOT FIBERGLASS TWO SECTION.

LIGHTNING PROTECTION - A DC PATH TO GROUND FOR ANTENNA STATIC DISCHARGE PLUS GAS FILLED LIGHTNING ARRESTORS.

MATERIALS - ALL MATERIALS TO BE GUARANTEED AGAINST CORROSIVE DETERIORATION UNDER SEA-COAST CLIMATE CONDITIONS FOR A PERIOD OF 5 YRS.

WEIGHT OF FIBERGLASS WHIP - NOT TO EXCEED 65 LBS.

| REQ'D. | ITEM | PART NUMBER | DESCRIPTION | SYMBOL |
|---|------|--|-----------------|--------------------------------------|
| LIST OF MATERIAL | | | | |
| MATERIAL | | THE TECHNICAL MATERIEL CORP. MAMARONECK, NEW YORK | | |
| FINISH | | TITLE 35' WIDEBAND RECEIVING WHIP ANTENNA SYSTEM | | |
| UNLESS OTHERWISE SPECIFIED DIMENSIONS ARE IN INCHES AND INCLUDE CHEMICALLY APPLIED OR PLATED FINISHES | | DRAWN CANZA | DATE 8-26-65 | FINAL APPROVAL <i>[Signature]</i> |
| DECIMALS .X ± .05 .XX ± .01 .XXX ± .005 | | CHECKED <i>[Signature]</i> | DATE 8/26/65 | DATE 8/27/65 |
| FRACTIONS ± 1/64 ANGLES ± 0° 30' | | ELECT. DES. | DATE | |
| TOLERANCES | | MECH. DES. | DATE | |
| | | | SHEET | REV. LTR. |



ID 349

| REVISIONS | | | | | | |
|-----------|---------------------------------|--------|------------|-------|------|------|
| SYM | DESCRIPTION | DATE | E.M.N. NO. | DRAFT | CHKD | APPD |
| Ø | ORIGINAL RELEASE FOR PRODUCTION | 9/8/69 | Ø | | | |

| REQ'D. | ITEM | PART NUMBER | DESCRIPTION | SYMBOL |
|--------|------|-------------|------------------|--------------------------|
| | 6 | MS 203 | LEAD, CONNECTING | |
| | 2 | 5 | CX102K501M | CAPACITOR, FIXED |
| | 1 | 4 | CX102K102M | ↓ ↓ |
| | 1 | 3 | CX102K301M | CAPACITOR, FIXED |
| | 1 | 2 | MS4754 | BRACKET, MTG., LOAD CAP. |
| | 1 | 1 | AS101 | IPA LOAD SWITCH ASS'Y. |

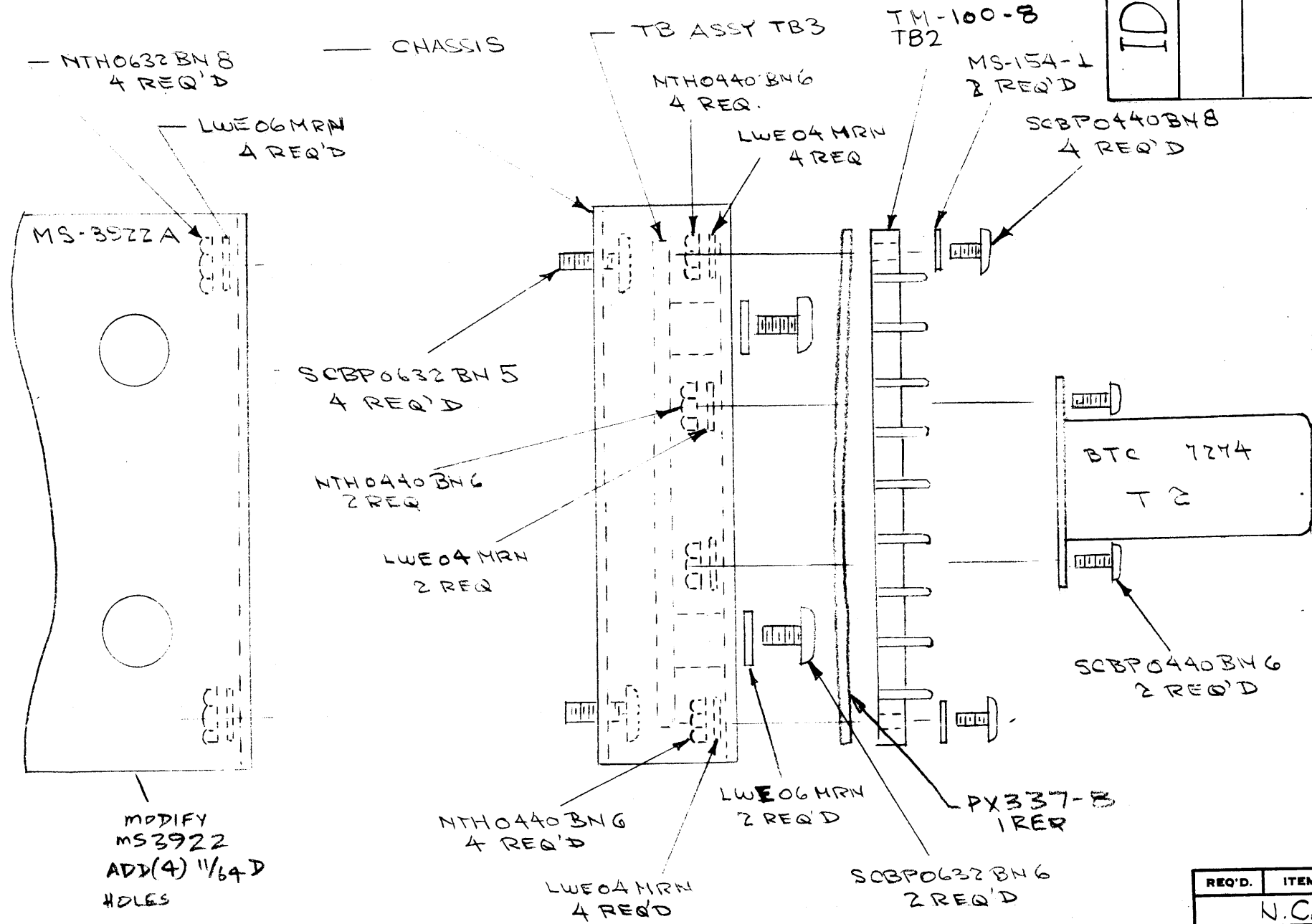
| | | | |
|---|--|---|--|
| BUDETTI | | LIST OF MATERIAL | |
| MATERIAL | | THE TECHNICAL MATERIEL CORP. MAMARONECK, NEW YORK | |
| FINISH | | TITLE INSTALLATION, LOAD CAPACITOR | |
| UNLESS OTHERWISE SPECIFIED DIMENSIONS ARE IN INCHES AND INCLUDE CHEMICALLY APPLIED OR PLATED FINISHES | | DRAWN H. AUSTIN CHECKED <i>[Signature]</i> ELECT. DES. <i>[Signature]</i> MECH. DES. | DATE 9-21-65 DATE 10/5/65 DATE DATE |
| DECIMALS .X ± .05 .XX ± .01 .XXX ± .005 | | FRACTIONS ± 1/64 ANGLES ± 0° 30' | FINAL APPROVAL <i>[Signature]</i> DATE 9/8/69 ID 349 SHEET REV. LTR. |

| | | |
|---|---------------|------------|
| 1 | REF-2 | |
| Q'TY./UNIT | MODEL USED ON | ASS'Y. NO. |
| SCALE | CODE | |
| THE CONTENTS OF THIS DRAWING ARE THE EXCLUSIVE PROPERTY OF THE TECHNICAL MATERIEL CORP. ITS UNAUTHORIZED USE OR REPRODUCTION IN WHOLE OR IN PART IS STRICTLY FORBIDDEN. | | |

NOTES

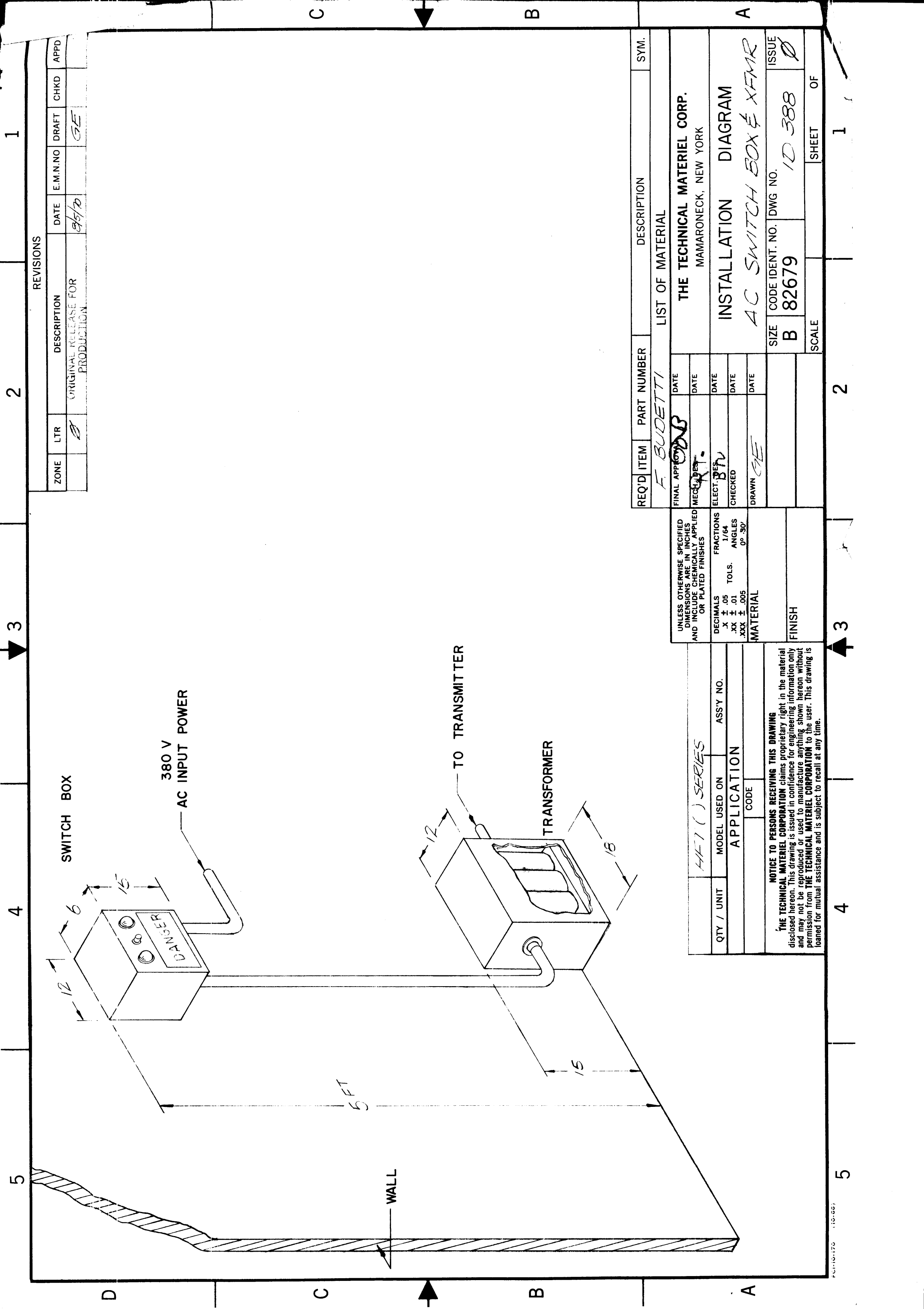
| REVISIONS | | | | | |
|-----------|---------------------------------|---------|------------|-------|------|
| SYM | DESCRIPTION | DATE | E.M.N. NO. | DRAFT | CHKD |
| Ø | ORIGINAL RELEASE FOR PRODUCTION | 2-23-66 | | JC | Ø |

ID355



| REQ'D. | ITEM | PART NUMBER | DESCRIPTION | SYMBOL |
|---|------|-------------|--|--------|
| N. CARTER LIST OF MATERIAL | | | | |
| MATERIAL | | | THE TECHNICAL MATERIEL CORP. MAMARONECK, NEW YORK | |
| FINISH | | | TITLE INSTALLATION, XFMR, CHASSIS | |
| UNLESS OTHERWISE SPECIFIED DIMENSIONS ARE IN INCHES AND INCLUDE CHEMICALLY APPLIED OR PLATED FINISHES | | | DRAWN | DATE |
| | | | CHECKED | DATE |
| DECIMALS .X ± .05 .XX ± .01 .XXX ± .005 | | | ELECT. DES. | DATE |
| | | | MECH. DES. | DATE |
| TOLERANCES | | | FINAL APPROVAL | DATE |
| FRACTIONS ± 1/64 ANGLES ± 0° 30' | | | ID355 | Ø |
| | | | | SHEET |
| | | | W/L 28 | 2/23 |

| | | | | | |
|---|--|------|------------|---------------|------------|
| NOTES | | | AZ102-2 | | |
| | | | Q'TY./UNIT | MODEL USED ON | ASS'Y. NO. |
| SCALE | | CODE | | | |
| THE CONTENTS OF THIS DRAWING ARE THE EXCLUSIVE PROPERTY OF THE TECHNICAL MATERIEL CORP. ITS UNAUTHORIZED USE OR REPRODUCTION IN WHOLE OR IN PART IS STRICTLY FORBIDDEN. | | | | | |



| REVISIONS | | | | | | | |
|-----------|-----|---------------------------------|--------|----------|-------|------|------|
| ZONE | LTR | DESCRIPTION | DATE | E.M.N.NO | DRAFT | CHKD | APPD |
| | | ORIGINAL RELEASE FOR PRODUCTION | 8/5/70 | | GE | | |

| REQ'D ITEM | PART NUMBER | DESCRIPTION | SYM. |
|---|-------------|-------------|------|
| F. BUDETTI | | | |
| FINAL APPROV | | DATE | |
| MECH. DES. | | DATE | |
| ELECT. DES. | | DATE | |
| CHECKED | | DATE | |
| DRAWN | | DATE | |
| UNLESS OTHERWISE SPECIFIED DIMENSIONS ARE IN INCHES AND INCLUDE CHEMICALLY APPLIED OR PLATED FINISHES | | | |
| DECIMALS | FRACTIONS | | |
| .X ± .05 | 1/64 | | |
| .XX ± .01 | TOLS. | | |
| .XXX ± .005 | ANGLES | | |
| | 0°-30' | | |
| MATERIAL | | | |
| FINISH | | | |

| QTY / UNIT | MODEL USED ON | ASSY NO. |
|--|---------------|----------|
| | APPLICATION | |
| | CODE | |
| <p>NOTICE TO PERSONS RECEIVING THIS DRAWING</p> <p>THE TECHNICAL MATERIEL CORPORATION claims proprietary right in the material disclosed hereon. This drawing is issued in confidence for engineering information only and may not be reproduced or used to manufacture anything shown hereon without permission from THE TECHNICAL MATERIEL CORPORATION to the user. This drawing is loaned for mutual assistance and is subject to recall at any time.</p> | | |

| REQ'D ITEM | PART NUMBER | DESCRIPTION | SYM. |
|------------------------------|-----------------|-------------|-------|
| LIST OF MATERIAL | | | |
| THE TECHNICAL MATERIEL CORP. | | | |
| MAMARONECK, NEW YORK | | | |
| INSTALLATION DIAGRAM | | | |
| AC SWITCH BOX & XFMR | | | |
| SIZE | CODE IDENT. NO. | DWG NO. | ISSUE |
| B | 82679 | 10 388 | Ø |
| SCALE | SHEET | | OF |
| | 1 | | 1 |