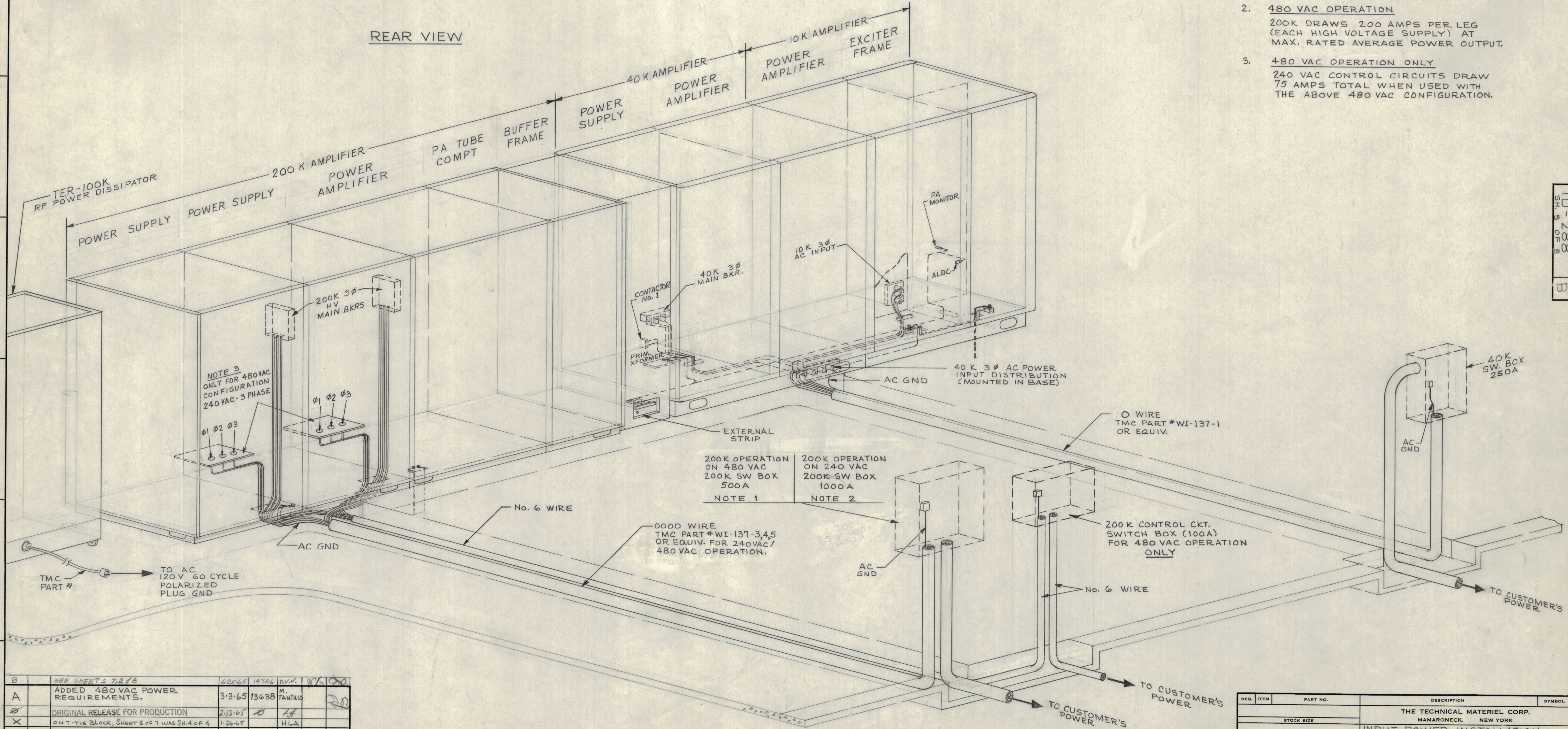


**INPUT POWER REQUIREMENTS**  
 240V 3 $\phi$  60 CYCLES 190 A Per  $\phi$  (40K AMPLIFIER)  
 240V 3 $\phi$  60 CYCLES 800A Per  $\phi$  (200K AMPLIFIER)  
 120V 1 $\phi$  60 CYCLES 15A (TER-100K)  
 AC GROUND  $\emptyset$  WIRE

- NOTES:**
- 240 VAC OPERATION**  
200K DRAWS 390 AMPS PER LEG (EACH HIGH VOLTAGE SUPPLY) AT MAX. RATED AVERAGE POWER OUTPUT.
  - 480 VAC OPERATION**  
200K DRAWS 200 AMPS PER LEG (EACH HIGH VOLTAGE SUPPLY) AT MAX. RATED AVERAGE POWER OUTPUT.
  - 480 VAC OPERATION ONLY**  
240 VAC CONTROL CIRCUITS DRAW 75 AMPS TOTAL WHEN USED WITH THE ABOVE 480 VAC CONFIGURATION.



B	SEE SHEETS 7,2,4,8	62565	19346	D.V.V.	0/15	0/10
A	ADDED 480 VAC POWER REQUIREMENTS.	3-3-65	13638	M. TANTILIO		
	ORIGINAL RELEASE FOR PRODUCTION	2/13/65		L.F.		
X	ON TITLE BLOCK, SHEET 5 OF 7 WAS SH.4 OF 4	1-26-65		H.L.A.		
SYM	ZONE	DESCRIPTION	DATE	CH. NO.	DRAFTS	CHECKER
UNLESS OTHERWISE SPECIFIED:			SCALE			
DIMENSIONS ARE IN INCHES			MAXIMUM ALLOWABLE TOLERANCES HAVE BEEN DETERMINED AND ANY DEVIATIONS WILL BE CAUSE FOR REJECTION. REMOVE ALL BURRS & SHARP EDGES			
TOLERANCES ON FRACTIONS $\pm 1/64$			DECIMALS $\pm .005$		ANGLES $\pm 1/2^\circ$	

REQ. PER UNIT	MODEL	SECTION	ASS'Y. NO.	DATE
	GPT-200K			4-17-63
USED ON				

REQ. ITEM	PART NO.	DESCRIPTION	SYMBOL
THE TECHNICAL MATERIEL CORP. MAMARONECK, NEW YORK			
INPUT POWER INSTALLATION, GPT-200K (AN/FRT-62)			
M.J.TANTILIO 4/17/63 RAC			
DRAWN	CHECKED	FINAL APPROVAL	
		ID-288	
FINISH & SPEC. NO.		ELEC. DES. APP.	MECH. DES. APP.
		SHEET 5 OF 8	

ID-288  
SHEET 5 OF 8