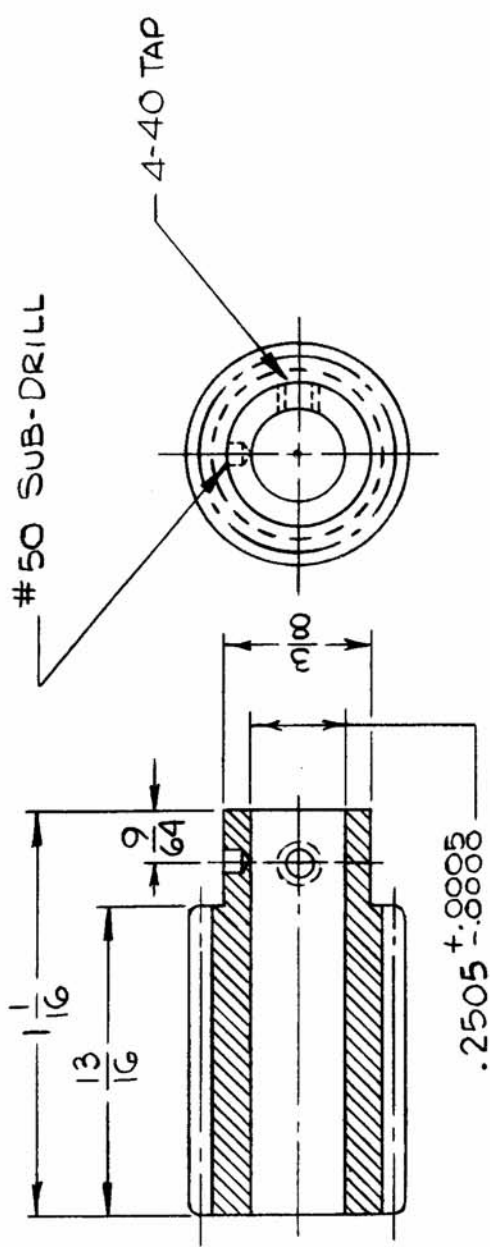


REQ. PER UNIT	USED ON	GR227 Ø
MODEL	ABBY. NO.	DATE
GPT-10KLF	A 4095	11-16-65



GEAR DATA	
PITCH	24
PITCH DIA.	.500
PRESSURE ANGLE	25°
FOUR TH'D - RIGHT HAND	

NOTE - TO MESH WITH GR226.

REQ. ITEM	PART NO.	BUDETTI	DESCRIPTION	SYMBOL
	4		THE TECHNICAL MATERIEL CORP. MAMARONECK. NEW YORK	
	STOCK SIZE		WORM GEAR	
	MATERIAL			
	# 303	H. AUSTIN	CHECKED	FINAL APPROVAL
	TYPE & TEMPER	DRAWN		
	HEAT TREAT. SPEC.			
	S104 PASSIVATE			GR227 Ø
	FINISH & SPEC. NO.		MECH. DES. APP.	
				M/L 38 2/2

DATE	CH. NO.	DRAFTS	CHECKER	ENG. APP.
2-2-66	Ø	JK	JK	
2-1-66	M	JK	JK	
DESCRIPTION	SCALE NOT TO SCALE			
UNLESS OTHERWISE SPECIFIED DIMENSIONS ARE IN INCHES AND INCLUDE CHEMICALLY APPLIED OR PLATED FINISHES				
TOLERANCES	CODE C S401-15			
DECIMALS	FRACTIONS			
.X ± .05	± 1/64			
.XX ± .01	ANGLES			
.XXX ± .005	± 0° 30'			