

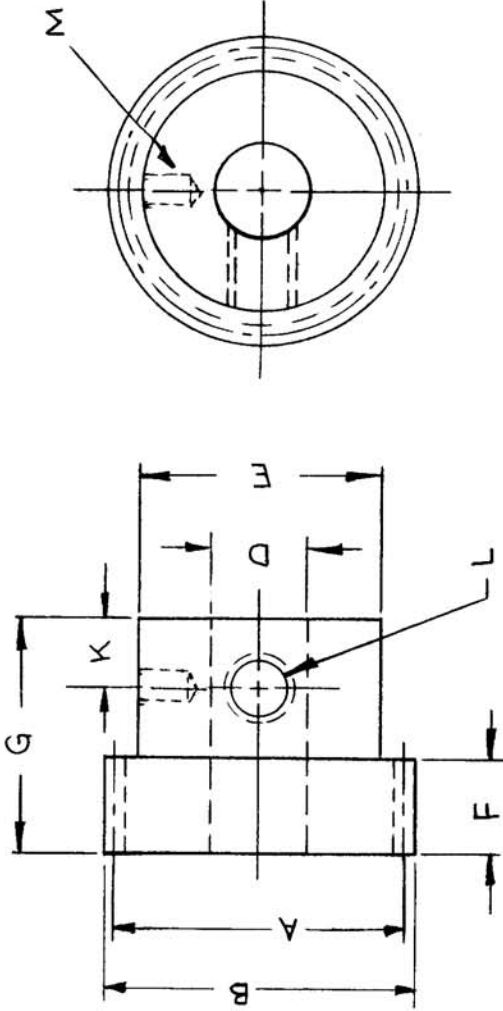
NOTE:

ALL GEARS ARE PREC. 1 UNLESS OTHERWISE SPECIFIED.

REQ. PER UNIT	1
MODEL	AFCR
USED ON ASS'Y. NO.	
DATE	3-29-65

GR221

A



TMC P/N	NO. OF TEETH	A (RD)	B (O.D.)	D (DIA)	E	F	G	K	L	M (SUB DRILL)
GR221	24	.3750	.406	.1248 ^{+0.0005}	.312	.125	.312	.09	2-56	.029 DRILL
GR221-2	44	.6875	.7188	.2498 ^{+0.0005}	.500	.125	.250	.062	2-56	#53 DRILL
GR221-3	36	.5625	.5938	.1248 ^{+0.0005}	.312	.125	.281	.062	2-56	.029 DRILL

REQ. ITEM	PART NO.	DESCRIPTION	SYMBOL
		Pose	
		THE TECHNICAL MATERIEL CORP. MAMARONECK. NEW YORK	
		GEAR, SPUR	
		64 PITCH, 20° PITCH PRESSURE ANGLE	
		H. AUSTIN	
		DRAWN	
		CHECKED	
		FINAL APPROVAL	
		STAINLESS STEEL	
		MATERIAL	
		303	
		TYPE & TEMPER	
		HEAT TREAT. SPEC.	
		S 104 PASSIVATED	
		FINISH & SPEC. NO.	
		SCALE	
		12-29-66	
		5-5-65	
		DATE	
		CH. NO.	
		DRAFTS	
		CHECKER	
		ENG. APP.	
		RME	
		4 L.	
		DESCRIPTION	
		UNLESS OTHERWISE SPECIFIED	
		DIMENSIONS ARE IN INCHES AND INCLUDE	
		CHEMICALLY APPLIED OR PLATED FINISHES	
		FRACTIONS	
		± 1/64	
		ANGLES,	
		± 0° 30'	
		DECIMALS	
		.X ± .05	
		.XX ± .01	
		.XXX ± .005	
		CODE	
		S401-374	
		GP 28-24	
		TOLERANCES	
		C	
		FINISH & SPEC. NO.	
		GR221	
		A	