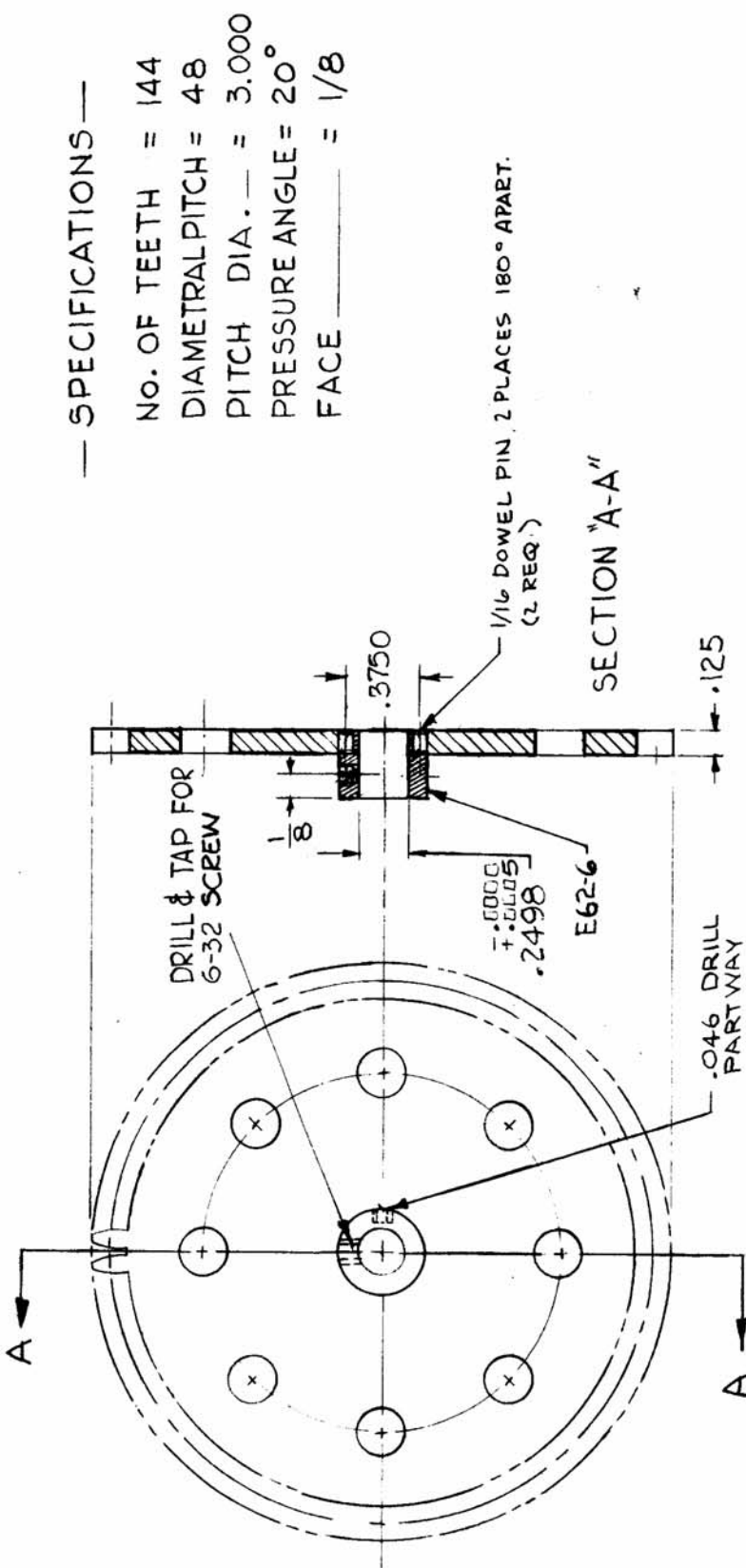


THE CONTENTS OF THIS DRAWING ARE THE EXCLUSIVE PROPERTY OF THE TECHNICAL MATERIEL CORP. ITS UNAUTHORIZED USE OR REPRODUCTION IN WHOLE OR IN PART IS STRICTLY FORBIDDEN.		USED ON		GR-176		B	
REQ. PER UNIT	MODEL	ASSY. NO.	DATE				
1	HR-1		7-26-62				



— SPECIFICATIONS —

NO. OF TEETH = 144

DIAMETRAL PITCH = 48

PITCH DIA. = 3.000

PRESSURE ANGLE = 20°

FACE = 1/8

(CAT. No 521-144-EG2 MODIFIED PER TMC)

REQ. ITEM	PART NO.	DESCRIPTION	SYMBOL
	KRUY	THE TECHNICAL MATERIEL CORP. MAMARONECK, NEW YORK	
		GEAR SPUR, W/HUB	
		STAINLESS STEEL	
	303		
		TYPE & TEMPER	
		HEAT TREAT. SPEC.	
	PASSIVATE S-104		
		FINISH & SPEC. NO.	
		ELEC. DES. APP.	
		MECH. DES. APP.	
		DRAWN	
		CHECKED	
		FINAL APPROVAL	
			GR-176
			B

DATE	CH. NO.	DRAFTS	CHECKER	ENG. APP.
1-8-63	7936			
14-66	1684			
9-14-66				
SCALE: S 401-196				
UNLESS OTHERWISE SPECIFIED: DIMENSIONS ARE IN INCHES TOLERANCES ON FRAC. ± 1/64 DEC. ± .005 ANGLES ± 1/20				
MAXIMUM ALLOWABLE TOLERANCES HAVE BEEN DETERMINED AND ANY DEVIATIONS WILL BE CAUSE FOR REJECTION. REMOVE ALL BURRS AND SHARP EDGES				