

THE CONTENTS OF THIS DRAWING ARE THE EXCLUSIVE PROPERTY OF THE TECHNICAL MATERIEL CORP. ITS UNAUTHORIZED USE OR REPRODUCTION IN WHOLE OR IN PART IS STRICTLY FORBIDDEN.

REQ. PER UNIT

2

USED ON

MODEL

GPR-92

DATE

6-14-62

GR-172

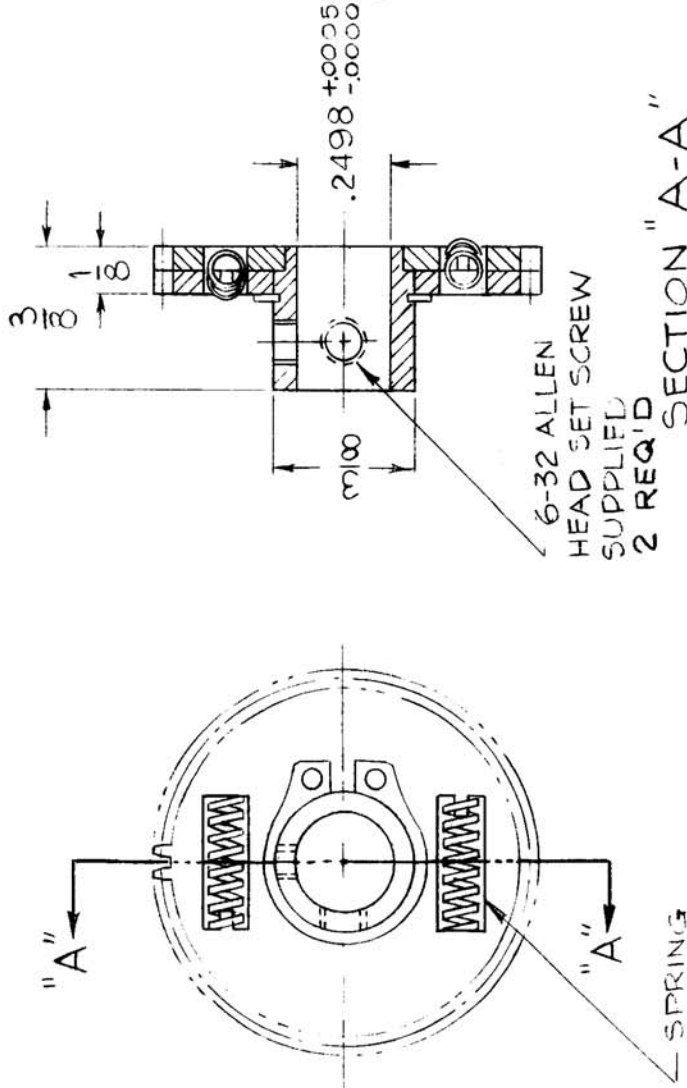
A

~ SPECIFICATIONS ~

NO. OF TEETH = 48
 DIAMETRAL PITCH = 48
 PITCH DIA. = 1.000
 PRESSURE ANGLE = 20°
 FACE = $\frac{1}{8}$

NOTES:

- HUB, STAINLESS STEEL PASSIVATE S104.
- GEAR, 24ST ALUM ALLOY ANODIZE.



REQ. ITEM	PART NO.	STRUMER DESCRIPTION	SYMBOL
		THE TECHNICAL MATERIEL CORP. MAMARONECK, NEW YORK	
	SEE NOTE 1 & 2	GEAR, ANTI-BACKLASH	
		MATERIAL	
		V.R.R. <i>JMA</i>	<i>BP</i>
		DRAWN	FINAL APPROVAL
		CHECKED	
		<i>JMA</i>	
		MECH. DES. APP.	
		FINISH & SPEC. NO.	GR-172
			A

SYM	DESCRIPTION	DATE	CH. NO.	DRAFTS	CHECKER	ENG. APP.
A	#6-32 WAS 4-40	9-23-63	9984	G.D.I	<i>JMY</i>	<i>JMA</i>

UNLESS OTHERWISE SPECIFIED:
 DIMENSIONS ARE IN INCHES
 TOLERANCES ON
 FRAC. ± 1/64 DEC. ± .005 ANGLES ± 1/2°

SCALE: S401-193 (ACCB-48)
 MAXIMUM ALLOWABLE TOLERANCES HAVE BEEN DETERMINED AND ANY DEVIATIONS WILL BE CAUSE FOR REJECTION.
 REMOVE ALL BURRS AND SHARP EDGES