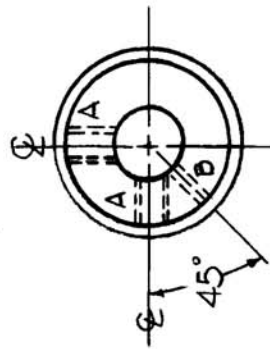
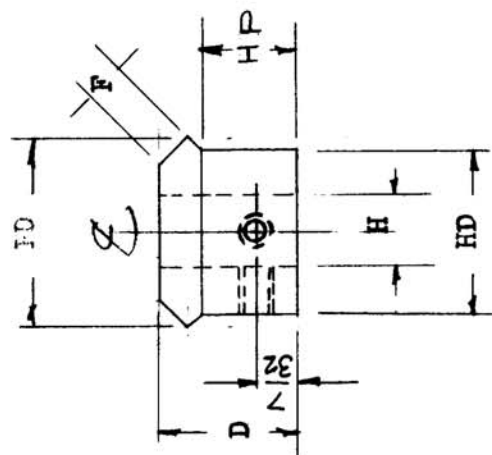


REQ. PER UNIT 1	MODEL OPT-10K	USED ON ASSY. NO.	DATE	GR-145	B
--------------------	------------------	-------------------	------	--------	---

A - TAP 8-32 2 Req.
 B - #52(.0635) DR. 1 Req.



- P.D. PITCH DIAMETER 1.000
- F - FACE .19
- D - DIMENSION 47/64
- HD HUB DIA. 7/8
- HP - HUB PROJECT 1/2
- H - HOLE 3/8
- MD - DIMENSION 1-1/16

REF: BOSTON GEAR #L-124Y

REQ. ITEM	PART NO.	DESCRIPTION	SYMBOL
	STEEL	THE TECHNICAL MATERIEL CORP.	
	STOCK SIZE	MAMARONECK, NEW YORK	
	Brass	MITER GEAR	
	MATERIAL		
	TYPE & TEMPER	DRAWN	CHECKED
	HEAT TREAT. SPEC.	1021110	
	chrome Plate .0003		
	FINISH & SPEC. NO.	ELEC. DES. APP. MECH. DES. APP.	

ISSUE ITEM: B 1 DIM CHG 9/21/59 1317
 A 1 2A Holes @ B Hole Added 6/8/59 J.C.B. J.C.B.
 DATE: 9/21/59 1317
 CH. NO. DRAFTS CHECKER ENG. APP.
 SCALE: MAXIMUM ALLOWABLE TOLERANCES HAVE BEEN DETERMINED AND ANY DEVIATIONS WILL BE CAUSE FOR REJECTION. REMOVE ALL BURRS AND SHARP EDGES

DEC. DIM. ±
 FRAC. DIM. ±
 ANGULAR DIM. ±