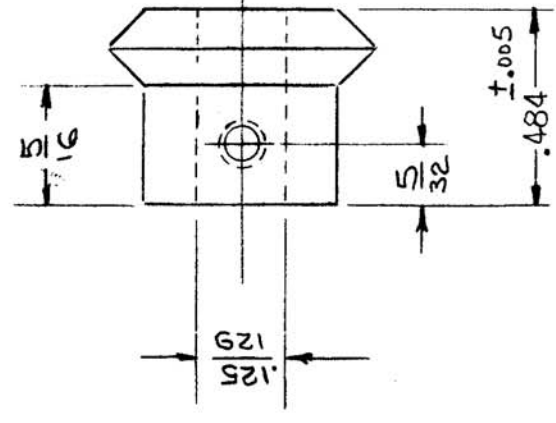


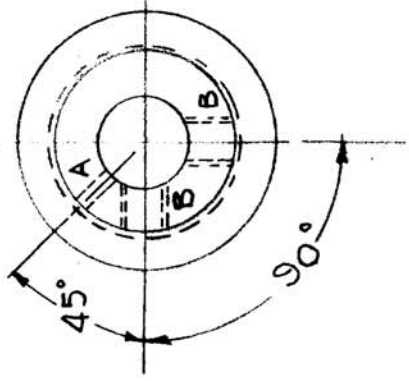
UNIT	QTY	UNIT	QTY
1	1	1	1
2	5	10	50

GR-139 E

A ~ #52 (.0635) DR - 1 Req.
 B ~ 4-40 TAP - 2 Req.



Pressure Angle — 20°
 Pitch DIA. — .600
 Pitch — 20
 Teeth — 12
 Face — .12
 Hole — .125
 Hub Proj. — .516
 Commercial - CL. 3 TOL.



ISSUE ITEM	CHANGED FROM	DATE	CH. N.	DRAFTS	CHECKER	ERG. APP.	REG. ITEM	PART NO.	DESCRIPTION	SYMB L
E 1	(2) "B" HOLES WERE	1-19-63	8036		Hole					
D 2	B-32 TAP	11-15-62	1644							
C 1	ON SPECS. HOLE WAS 1/A	9/21/59	1317							
B 1	DIM. WAS (.067) D. HOLE	6/8/59			J.C.B.					
A 1	0 "A" Hole added	3/24/59			Hole					
	3-401-15 (L-98Y)									
	DELETED									
	CHANGED FROM									
	TOLERANCES									
	SCALE:									
	MAXIMUM ALL WABLE TOLERANCES HAVE									
	BEEN DETERMINED AND ANY DEVIATIONS									
	WILL BE CAUSE FOR REJECTI N.									
	REMOVE ALL BURRS AND SHARP EDGES									
DEC. DIM. ±										
FRAC. DIM. ±										
ANGULAR DIM. ±										
	FINISH & SPEC. NO.									
	Chrome Plate.0003									
	TYPE & TEMPER									
	MACHINING									
	FREE MATERIAL									
	BRASS									
	STOCK SIZE									
	THE TECHNICAL MATERIEL CORP.									
	MAMARONECK, NEW YORK									
	GEAR, MITER									
	DRAWN									
	CHECKED									
	FINAL APPROVAL									
	GR-139 E									