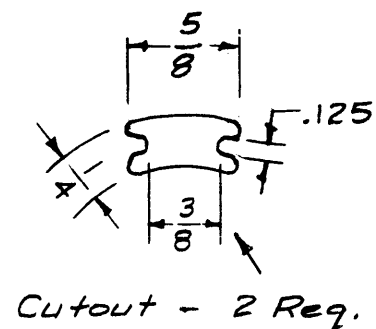
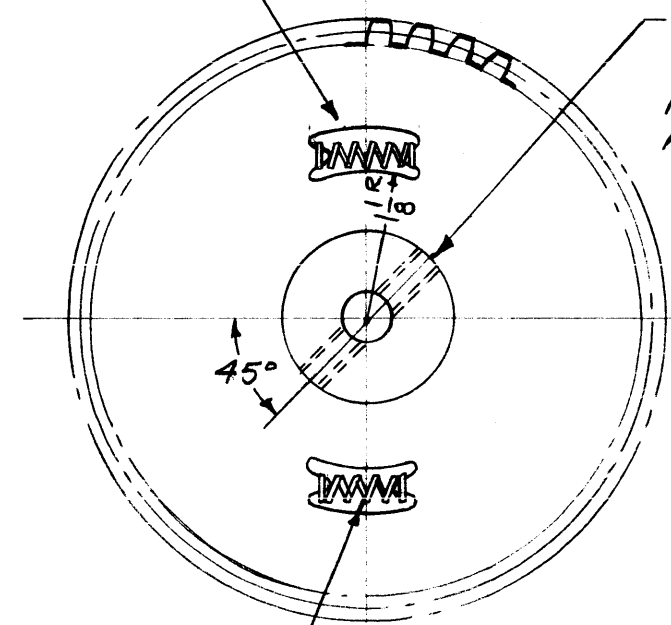


GR-135

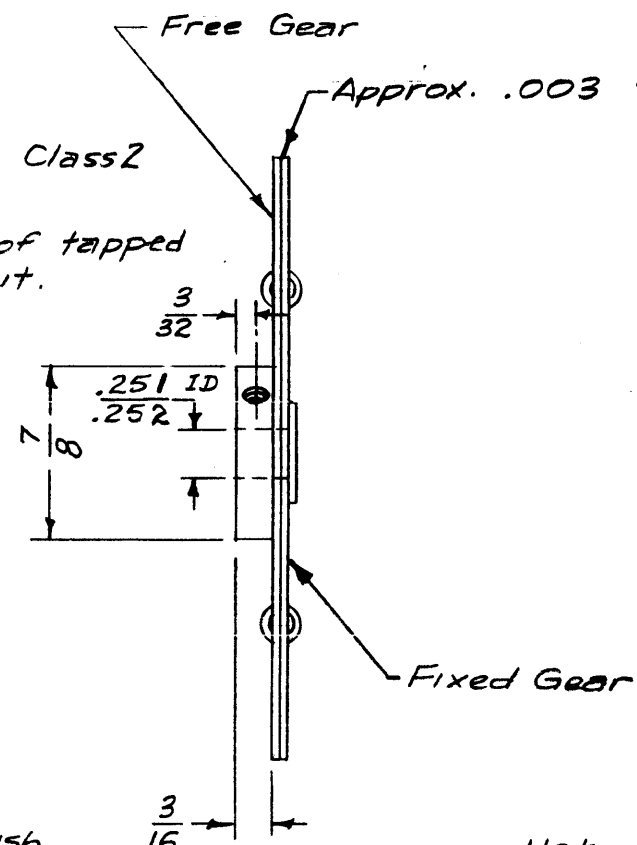


Cutout - 2 Req.



Dr. & Tap 6-32 Class 2
2 Req.
Note relation of tapped holes to cutout.

Spring suitable to prevent backlash.
(2 Req.) Spring must not bind.
Use TMC SP-122



Approx. .003 spacing between gears.

Pitch Dia. — 3.000"
Pitch — 48
No. of Teeth — 144
Pressure Angle — 14 1/2°
Comm. Class 3 Tol.
Type - Anti-backlash

Note: Lubricate lightly between gears.

NOTICE TO PERSONS RECEIVING THIS DRAWING

THE TECHNICAL MATERIEL CORPORATION claims proprietary right in the material disclosed hereon. This drawing is issued in confidence for engineering information only and may not be reproduced or used to manufacture anything shown hereon without permission from THE TECHNICAL MATERIEL CORPORATION to the user. This drawing is loaned for mutual assistance and is subject to recall at any time.

Property of:

THE TECHNICAL MATERIEL CORPORATION
MAMARONECK, NEW YORK

Ref. - N. J. Gear Works

ISSUE	ITEM	CHANGED FROM	DATE	CH. NO.	DRAFTS	CHECKER	ENG. APP.
B	1	FINISH WAS YELLOW ANODIZE.	12-29-64	13185	2.F.	@	[Signature]
A	1	Comp. Rev.	12/1/57	1	16	[Signature]	[Signature]

TOLERANCES		SCALE:	2-805
DEC. DIM. ±		MAXIMUM ALLOWABLE TOLERANCES HAVE BEEN DETERMINED AND ANY DEVIATIONS WILL BE CAUSE FOR REJECTION.	
FRAC. DIM. ± 1/64		REMOVE ALL BURRS AND SHARP EDGES	
ANGULAR DIM. ±			

1	SBE-3	AP-100	A-1517	11-30-59
1	SBE-142			7-23-57
REQ. PER UNIT	MODEL	PROJECT NO.	ASS'Y. NO.	DATE
				USED ON

REQ. ITEM	PART NO.	DESCRIPTION	SYMBOL
.032 thk (each gear)		THE TECHNICAL MATERIEL CORP. MAMARONECK, NEW YORK	
Aluminum		GEAR, SPLIT, 3" P.D.	
		SBE-1	
245 T3		16	[Signature]
TYPE & TEMPER	HEAT TREAT. SPEC.	DRAWN	CHECKED
S404 YELLOW IRIDITE		[Signature]	[Signature]
FINISH & SPEC. NO.	ELEC. DES. APP.	MECH. DES. APP.	GR-135 B