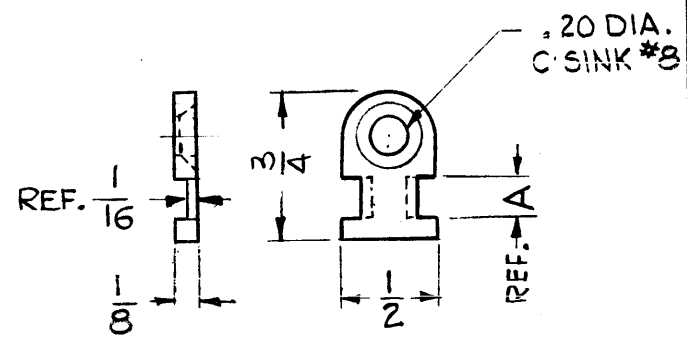


| CHART 1      |           |                  |                      |           |
|--------------|-----------|------------------|----------------------|-----------|
| TMC PART NO. | MFGR. NO. | STRAP WIDTH MAX. | DIMENSION "A" (REF.) | PICTORIAL |
| CU-151 -1    | TC-102    | .20              | 7/32                 | 1         |

| CHART 2 |                      |
|---------|----------------------|
| CODE    | COLOR TO MIL-STD-104 |
| 0       | BLACK                |
| 1       | BROWN                |
| 2       | RED                  |
| 3       | ORANGE               |
| 4       | YELLOW               |
| 5       | GREEN                |
| 6       | BLUE                 |
| 7       | PURPLE               |
| 8       | GRAY                 |
| 9       | NATURAL (WH)         |

| REVISIONS                               |             |      |            |       |           |
|---|-------------|------|------------|-------|-----------|
| SYM                                     | DESCRIPTION | DATE | E.M.N. NO. | DRAFT | CHKD APPD |
| <u>SPECIFICATIONS</u>                   |             |      |            |       |           |
| 1 - TEMPERATURE RANGE: -65° TO + 350°F. |             |      |            |       |           |
| 2 - MELTING POINT: 480°F.               |             |      |            |       |           |
| 3 - MATERIAL: NYLON                     |             |      |            |       |           |
| <u>NOTES</u>                            |             |      |            |       |           |
| 1. USED WITH CU-142                     |             |      |            |       |           |



- PICTORIAL 1 -

PURCHASING INFORMATION: MFGRS. NO. WILL BE AS FOLLOWS

TC - 102 - 4  
 BASIC NUMBER (SEE CHART 1)      COLOR (SEE CHART 2)  
 OMIT IF NATURAL WHITE IS REQD.

TMC PART NO. SHALL BE IN THE FOLLOWING FORM:

CU-151 -1 - 9  
 BASIC TMC NO. AND STYLE (SEE CHART 1)      COLOR (SEE CHART 2)

| REQ'D.  | ITEM | PART NUMBER | DESCRIPTION  | SYMBOL   |
|---|------|-------------|--|--|
| LIST OF MATERIAL  |      |             |  |  |
| MATERIAL  |      |             | THE TECHNICAL MATERIEL CORP.<br>MAMARONECK, NEW YORK   |  |
| FINISH  |      |             | TITLE<br>RETAINER, CABLE STRAP   |  |
| UNLESS OTHERWISE SPECIFIED DIMENSIONS ARE IN INCHES AND INCLUDE CHEMICALLY APPLIED OR PLATED FINISHES |      |             | DRAWN G.D.L.      DATE 10-17-63<br>CHECKED <i>Jude</i> DATE 11-5-63<br>ELECT. DES. <i>JC</i> DATE<br>MECH. DES. <i>JC</i> DATE 11-7-63 | FINAL APPROVAL <i>BP</i> DATE<br>SHEET <b>CU-151</b> REV. LTR. |

NOTES

| Q'TY./UNIT | MODEL USED ON | ASS'Y. NO. |
|------------|---------------|------------|
| SCALE 1:1  | CODE C        | S-401-35   |

THE CONTENTS OF THIS DRAWING ARE THE EXCLUSIVE PROPERTY OF THE TECHNICAL MATERIEL CORP. ITS UNAUTHORIZED USE OR REPRODUCTION IN WHOLE OR IN PART IS STRICTLY FORBIDDEN.