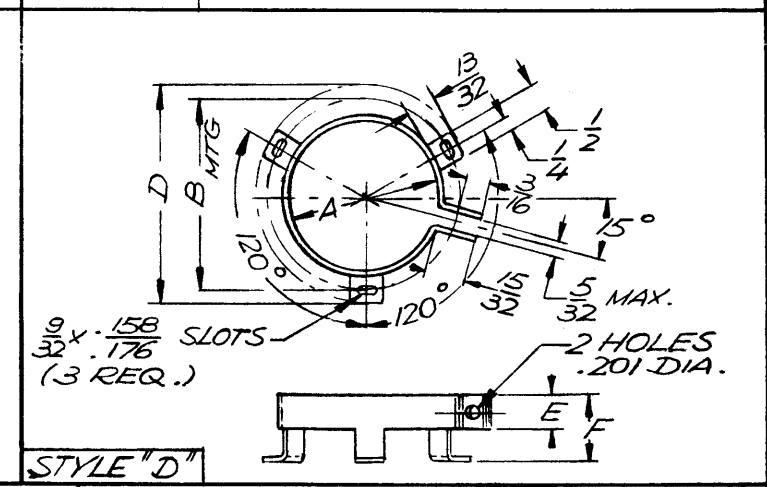
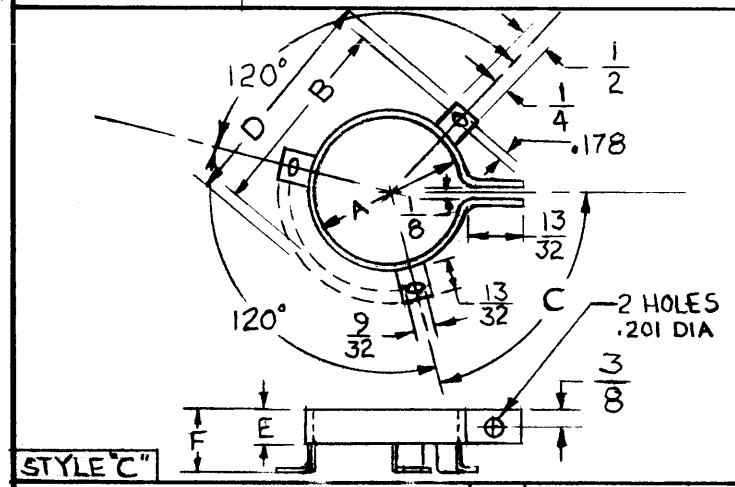
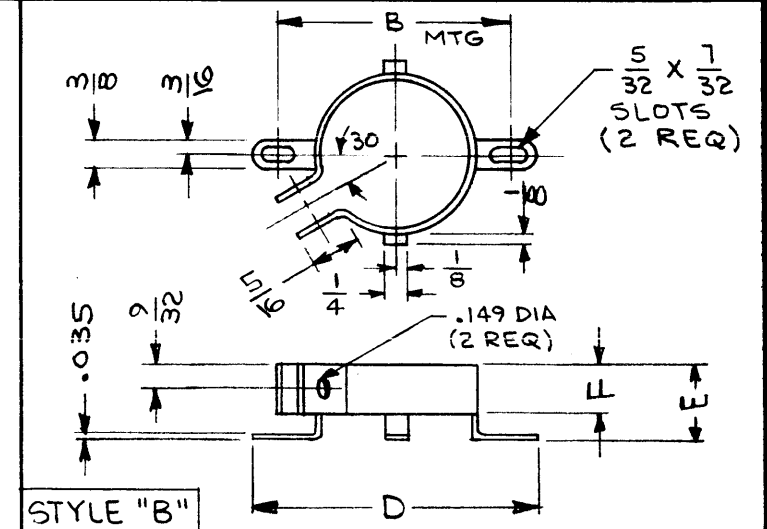
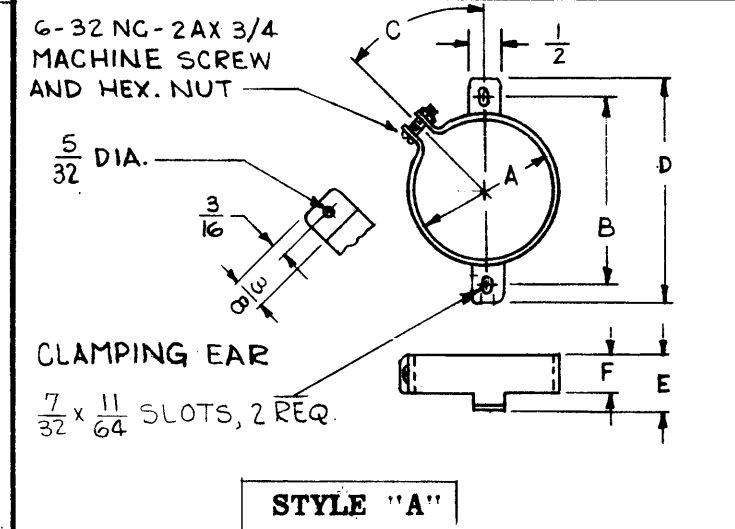


T.M.C. PART NUMBER	MFRS. REF.	MFRS. PART NO.	DIMENSIONS						USED TO MOUNT NOMINAL CAN DIA.	REF. T.M.C. PART NO.	
			A	B	C	D	E	F			STYLE
CU-145-A1	S	15	1-13/16	2-3/16	45°	2-5/8	3/4	9/16	A	1-3/4	CE-112-1
CU-145-B1	B	4586-97A	1-3/8	1-25/32	+	2-7/32	3/4	9/16	B	1-3/8	CE-117-1
CU-145-C1	B	CMC-32	2"	2 1/2	75°	2-7/8	3/4	1 1/8	C	2 1/16	CE 112-9
CU-145-C2		VR10	2 1/2	3	75°	3-5/16	3/4	1 1/8	C	2 1/2	—
CU-145-D1		VR12	3	3 7/16		3-13/16	3/4	1 1/8	D	3	—

REVISIONS						
SYM	DESCRIPTION	DATE	E.M.N. NO.	DRAFT	CHKD	APPD.
A	STYLE (B), CU-145-B1 ADDED; MFGS REF B ADDED	2/23/63	10599			
B	STYLE (C), CU-145-C1 ADDED	10.6.64	12548			
C	CLERICAL CHANGE	11.17.64	—			
D	CLERICAL CHANGE	8-9-65	—			
E	CU-145-C2, CU-145-D1 & PICT. STYLE "D" ADDED	12/23/65	19129			



MFRS. REFERENCE:	S 5401-34
	B 5401-49

**SPECIFICATIONS**

- MATERIAL: STEEL, .030 TO .040 THICK.
- FINISH: CADMIUM PLATE.
- HARDWARE: SCREW AND NUT SUPPLIED.
  - A. MATERIAL: BRASS
  - B. FINISH: CADMIUM PLATE
  - C. SCREW HEAD: ROUND, BINDER OR PAN

**NOTES**

THE CONTENTS OF THIS DRAWING ARE THE EXCLUSIVE PROPERTY OF THE TECHNICAL MATERIEL CORP. ITS UNAUTHORIZED USE OR REPRODUCTION IN WHOLE OR IN PART IS STRICTLY FORBIDDEN.

REQ'D.	ITEM	PART NUMBER	DESCRIPTION	SYMBOL
<b>STRUMER LIST OF MATERIAL</b>				
MATERIAL			<b>THE TECHNICAL MATERIEL CORP. MAMARONECK, NEW YORK</b>	
SEE SPECIFICATIONS				
FINISH			<b>RETAINER, CAPACITOR</b>	
SEE SPECIFICATIONS				
Q'TY./UNIT	MODEL USED ON	ASS'Y. NO.	UNLESS OTHERWISE SPECIFIED DIMENSIONS ARE IN INCHES AND INCLUDE CHEMICALLY APPLIED OR PLATED FINISHES	
SCALE	CODE		DECIMALS	FRACTIONS
			.X ± .05	± 1/64
			.XX ± .01	ANGLES
			.XXX ± .005	± 0°

DRAWN	DATE	FINAL APPROVAL	DATE
<i>G. Sencen</i>	1-15-63	<i>[Signature]</i>	
CHECKED	DATE		
<i>[Signature]</i>	1-17-63		
ELECT. DES.	DATE		
<i>[Signature]</i>	1-24-63		
MECH. DES.	DATE		
<i>[Signature]</i>	1-23-63		

CU-145

E