

THE CONTENTS OF THIS DRAWING ARE THE EXCLUSIVE PROPERTY OF THE TECHNICAL MATERIEL CORP. ITS UNAUTHORIZED USE OR REPRODUCTION IN WHOLE OR IN PART IS STRICTLY FORBIDDEN.

REQ. PER UNIT
 MODEL
 USED ON
 ASSY. NO.
 DATE

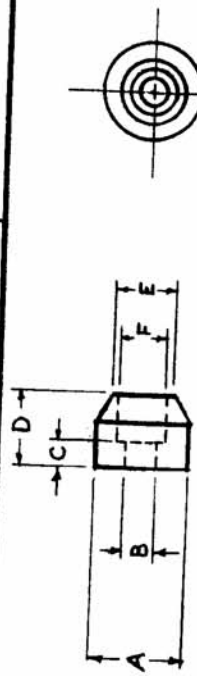
CU-139

B

TMC PART NO.	FOR HANDLE DIAMETER	A	B	C	D	E	F	MATERIAL	MFG. NO.
CU-139-1	1/4	1/2	3/16	±.004	1/4	11/32	±.002	Brass	6446
CU-139-2	5/16	9/16	7/32	.062	1/4	13/32	.259	Brass	6441
CU-139-3	3/8	5/8	1/4	.093	3/8	15/32	.382	Brass	6444
CU-139-4	5/32	1/4	7/64	.047	1/8	13/64	.161	Brass	1952-2
CU-139-5	5/16	9/16	7/32	-.062	1/4	13/32	.320	ALUMAL	

FINISH CHART

TMC FINISH CODE	ADD THE FOLLOWING TO M.E.S. PART NO.	FINISH
N	-4	Nickel Plate Polished
B	-6	Black Oxide
A		BLACK ANODIZED



TMC Part No. Shall Be In The Following Form:

CU-139-1 B
 Basic TMC No. & Size | Finish Code

Reference: AMATOM

REQ. ITEM	PART NO.	DESCRIPTION	SYMBOL
		THE TECHNICAL MATERIEL CORP. MAMARONECK, NEW YORK	
		FERRULE, HANDLE	
		MATERIAL	
		TYPE & TEMPER	
		HEAT TREAT. SPEC.	
		CHECKED	
		DRAWN	
		FINAL APPROVAL	
		FINISH & SPEC. NO.	
		ELEC. DES. APP.	
		MECH. DES. APP.	

UNLESS OTHERWISE SPECIFIED:
 DIMENSIONS ARE IN INCHES
 TOLERANCES ON
 FRAC. ± 1/64 DEC. ± .005 ANGLES ± 1/20

SCALE:
 MAXIMUM ALLOWABLE TOLERANCES HAVE BEEN DETERMINED AND ANY DEVIATIONS WILL BE CAUSE FOR REJECTION.
 REMOVE ALL BURRS AND SHARP EDGES