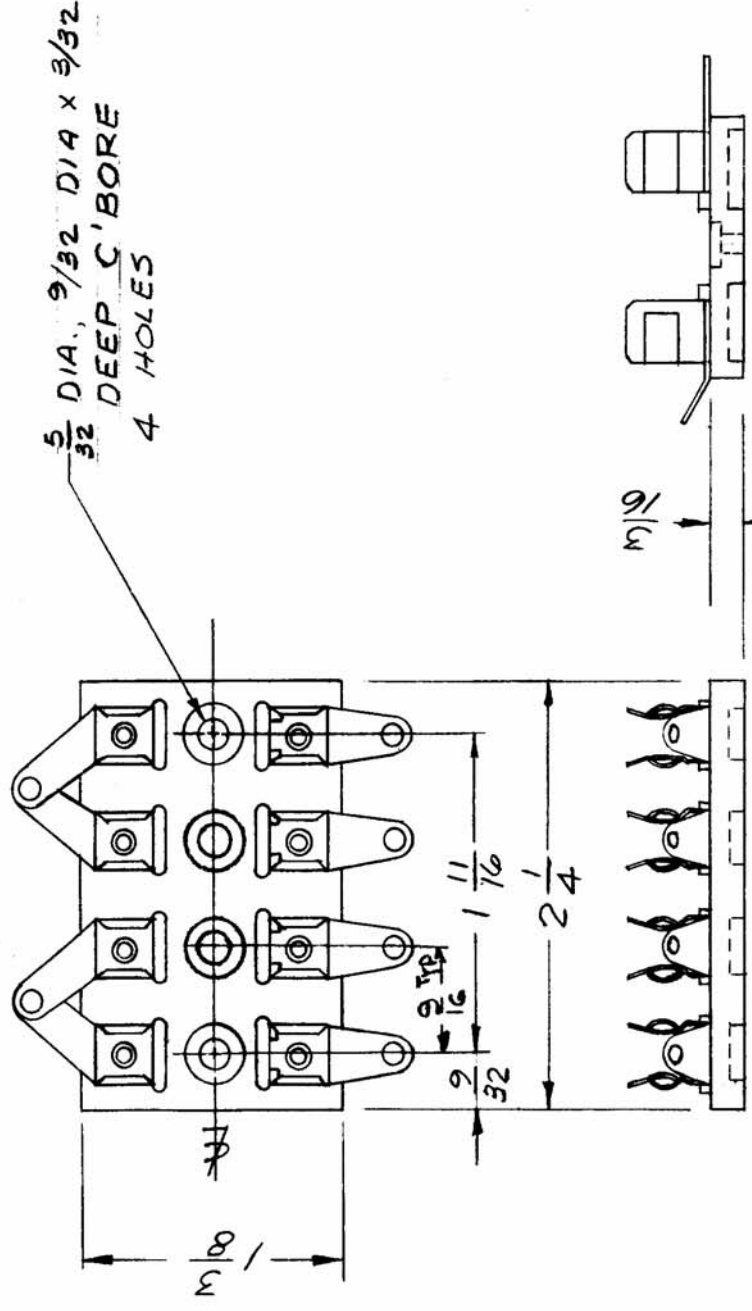


CUSTOMER USE

THE CONTENTS OF THIS DRAWING ARE THE EXCLUSIVE PROPERTY OF THE TECHNICAL MATERIEL CORP. ITS UNAUTHORIZED USE OR REPRODUCTION IN WHOLE OR IN PART IS STRICTLY FORBIDDEN.

REQ. PER UNIT	1
MODEL	GPR-92
USED ON ASSY. NO.	
DATE	10-4-61

CU-138 B



REF: MS-3030

REQ. ITEM	PART NO.	DESCRIPTION	SYMBOL
		THE TECHNICAL MATERIEL CORP. MAMARONECK, NEW YORK	
		BLOCK, MOUNTING, POLARIZED FOR RECTIFIERS	
		WA	BP
		DRAWN	CHECKED
		MP	MP
		ELEC. DES. APP. MECH. DES. APP.	
		FINISH & SPEC. NO.	CU-138 B
		TYPE & TEMPER	HEAT TREAT. SPEC.
		CHECKER	ENG. APP.
		DATE	CH. NO.
		7-25-62	7542
		7-25-62	6934
		SCALE: 5/16-14/32	699079
		UNLESS OTHERWISE SPECIFIED: DIMENSIONS ARE IN INCHES TOLERANCES ON FRAC. ± 1/64 DEC. ± .005 ANGLES ± 1/2°	
		MAXIMUM ALLOWABLE TOLERANCES HAVE BEEN DETERMINED AND ANY DEVIATIONS WILL BE CAUSE FOR REJECTION. REMOVE ALL BURRS AND SHARP EDGES	
		OBsolete NOTE DELETED	
		REPLACED BY A-3047	