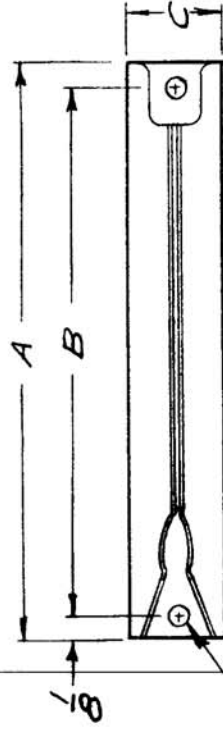


ISSUE	ITEM	CHANGED FROM	DATE	CN. NO.	DRAFTS	CHECKER	ENG. APP.	REQ.	ITEM	PART NO.	DESCRIPTION	SYMBOL
B		REDRAWN	13/12/65		RD	RS	(Signature)					

PART NO	A	B	C	VENDOR'S NO
CU10012 - 1	2 1/2	2 1/4	1/2	17B - 5 - 3
CU10012 - 2	3	2 3/4	1/2	17B - 6 - 3



.098 (+.003 - .001)
2 HOLES

MARK ON REAR TMC PART NO.
W/LATEST REVISION LETTER

NOTE:
MOUNT WITH RIVET EY10004

VENDOR: S401-254

AMC 20	020/65	A10376/10374	18-10-65	DATE	.010	STOCK SIZE	TMC (Canada) LIMITED OTTAWA ONTARIO
MODEL	PROJECT NO.	ASS'Y. NO.	USED ON	DATE	BERYLLIUM COPPER	MATERIAL	RETAINER
						WEIGHT PER PC.	P.C. BOARD
						TYPE & TEMPER	None
						ELEC. DES. APP.	MECH. DES. APP.
						CHECKED	FINAL APPROVAL
							CU10012 B

IF IT IS FOUND DESIRABLE TO CHANGE ANY TOLERANCE OR OTHER DETAIL SPECIFIED ON THIS DRAWING NOTIFY THE PURCHASER PROMPTLY.

SCALE NTS

DIMENSIONS IN INCHES
UNLESS OTHERWISE SPECIFIED
DRILL, PUNCH, COMMERCIAL STOCK
SIZES AND MANUFACTURERS
TOLERANCES ARE NOT INCLUDED.

TOLERANCES

DEC. DIM. ±
FRAC. DIM. ± 1/64
ANGULAR DIM ±