

A
CM-110

In accordance w/Mil-C-5/5 CM35 Case

Capacitance Range: 16,000 to 40,000

Temperature Range: -55°C to +130°C

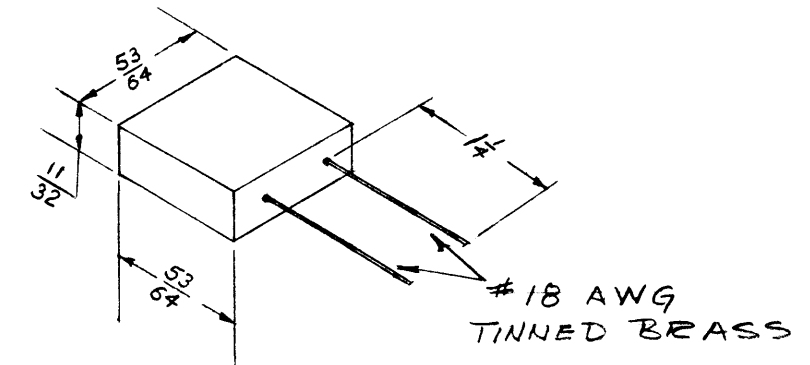
Standard Tolerance: $\pm 5\%$ for characteristic "C" or better.
 $\pm 20\%$ for characteristic "B"

CAP MMFDS.	SUPER MICADON TYPE: 1 AD	WVDC
16,000	LAD5S16	500
18,000	LAD5S18	
20,000	LAD5S2	
22,000	LAD5S22	
24,000	LAD5S24	
27,000	LAD5S27	
30,000	LAD5S3	500
33,000	LAD3S33	300
36,000	LAD3S36	
39,000	LAD3S39	
40,000	LAD3S40	

CHARACTERISTICS DESCRIPTION		
CHARACTERISTIC	TEMPERATURE COEFFICIENT PARTS PER MILLION PER °C.	CAPACITANCE DRIFT
B	Not specified	Not specified
C	-200 to +200	± 0.5 per cent
D	-100 to +100	± 0.3 per cent
E	-20 to +100	$\pm (0.1 \text{ per cent} + 0.1 \text{ mmf.})$
F	0 to +70	$\pm (0.05 \text{ per cent} + 0.1 \text{ mmf.})$

TOLERANCE	
E	$\pm 0.5\%$
F	$\pm 1\%$
G	$\pm 2\%$
J	$\pm 5\%$
K	$\pm 10\%$
M	$\pm 20\%$

STANDARD DRAWING

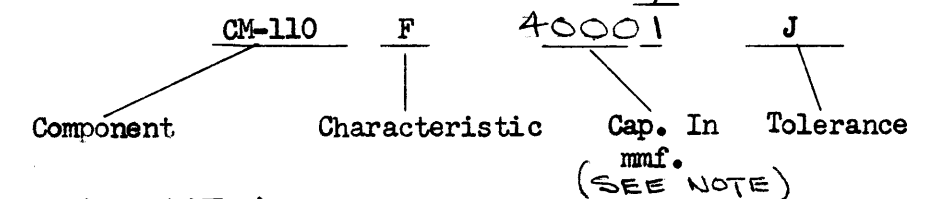


Capacitors can be supplied in closer characteristics than "F" (.0 - +70 PPM/°C) such as:

0 to +40 PPM/°C
-20 to +20 PPM/°C

and with a negative coefficient -40 to 0 PPM/°C, or to your specific requirements.

Type Designation shall be in following form:
5th DIGIT INDICATES # ZEROS



CAPACITANCE NOTE:

1. CAPACITANCE TO BE SPECIFIED TO 4 DIGITS.
2. 5th DIGIT IS ADDED TO INDICATE NO. OF ZEROS
3. WHERE DECIMAL POINT IS INCLUDED (BY R) 5th DIGIT IS OMITTED
4. SEE EXAMPLES ABOVE.

EXAMPLES
16,000 = 16001
16,500 = 16501

NOTE TO PURCHASERS RELATIVE TO THIS DRAWING

THE TECHNICAL MATERIEL CORPORATION claims proprietary right in the material disclosed hereon. This drawing is issued in confidence for engineering information only and may not be reproduced or used to manufacture anything shown hereon without permission from THE TECHNICAL MATERIEL CORPORATION to the user. This drawing is loaned for mutual assistance and is subject to recall at any time.

Property of:
THE TECHNICAL MATERIEL CORPORATION
MAMARONECK, NEW YORK

Ref: Cornell-Dubilier (Super-Micadon Type 1 AD

REQ. ITEM	PART NO.	DESCRIPTION	SYMBOL
		THE TECHNICAL MATERIEL CORP. MAMARONECK, NEW YORK	
	STOCK SIZE		
	MATERIAL	Capacitor, fixed Mica	
	TYPE & TEMPER	SC. 26, 57	
	HEAT TREAT. SPEC.	DRAWN A.N.D.	CHECKED A.J.J.
	FINISH & SPEC. NO.	ELEC. DES. APP.	MECH. DES. APP.
		CM-110	A

ISSUE ITEM	CHANGED FROM	DATE	CH. NO.	DRAFTS	CHECKER	ENG. APP.
A 1	Capacitance Note & Example Clarified	4/8/58	1		JAD	AJJ
TOLERANCES		SCALE:				
DEC. DIM. \pm		MAXIMUM ALLOWABLE TOLERANCES HAVE BEEN DETERMINED AND ANY DEVIATIONS WILL BE CAUSE FOR REJECTION. REMOVE ALL BURRS AND SHARP EDGES				
FRAC. DIM. \pm						
ANGULAR DIM. \pm						

REQ. PER UNIT	MODEL	PROJECT NO.	ASS'Y. NO.	DATE