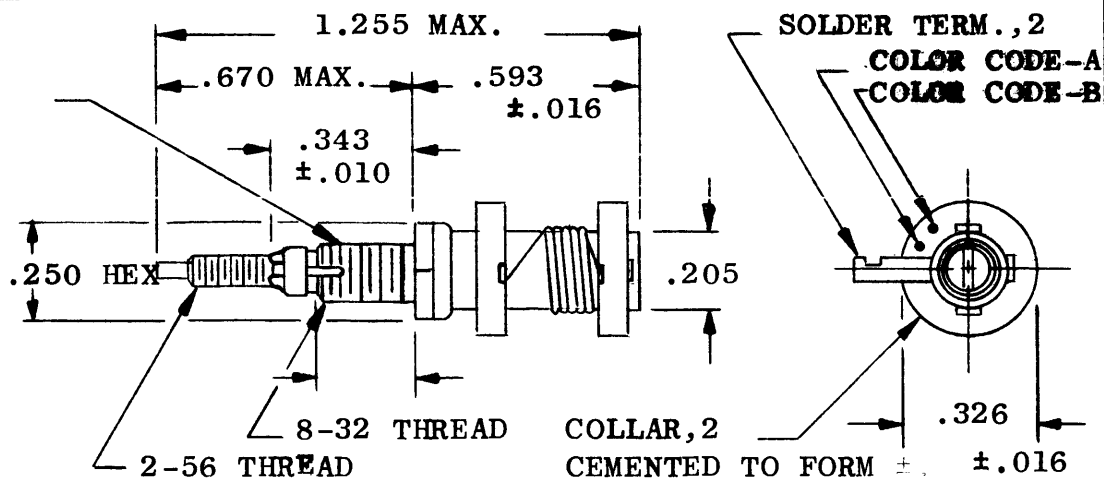
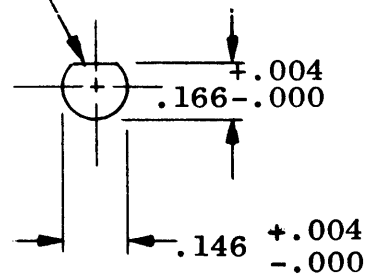


RECOMMENDED "D"
PUNCHING FOR
MOUNTING

FLAT



CL337 A

REVISIONS

SYM	DESCRIPTION	DATE	E.M.N. NO.	DRAFT	CHKD	APPD
O	ORIGINAL RELEASE FOR PRODUCTION	5/13/64	#	JL	@	JK
A	ON CHART: BASIC CORE MAT'L WAS "CARBONYL J (GRN)"	9.24.64	12451	WB	@	Will

TMC PART NUMBER	MFR. PART NUMBER	COLOR CODE		INDUCTANCE RANGE		MIN. Q AT INDUCTANCE		MAX. DC RES.	NO. OF LUGS PER COLLAR	TOTAL NO. OF LUGS	TEST FREQ.	WIRE SIZE	APPROX. NO. OF TURNS	DC CURRENT MA	SRF MIN. MC	BASIC CORE MATERIAL
		A	B	MIN.	MAX.	MIN.	MAX.									
CL-337-1	3338-8	GRAY		.87μH	1.3μH	75	65	.084	1	2	25 MC	28	14	635	190	CARBONYL J (BLU)

NOTE:
MOUNTING HARDWARE SUPPLIED UNASSEMBLED:
INTERNAL TOOTH LOCKWASHER
MOUNTING HEX NUT

Q'TY./UNIT		MODEL USED ON		ASS'Y. NO.
SCALE #		CODE C	S401-167	
THE CONTENTS OF THIS DRAWING ARE THE EXCLUSIVE PROPERTY OF THE TECHNICAL MATERIEL CORP. ITS UNAUTHORIZED USE OR REPRODUCTION IN WHOLE OR IN PART IS STRICTLY FORBIDDEN.				

NOTES

REQ'D.	ITEM	PART NUMBER	DESCRIPTION	SYMBOL
GELLMAN LIST OF MATERIAL				
MATERIAL		THE TECHNICAL MATERIEL CORP. MAMARONECK, NEW YORK		
FINISH		TITLE COIL, R.F., TUNED		
UNLESS OTHERWISE SPECIFIED DIMENSIONS ARE IN INCHES AND INCLUDE CHEMICALLY APPLIED OR PLATED FINISHES		DRAWN J. LESHINSKI	DATE 5/4/64	FINAL APPROVAL RAC
		CHECKED	DATE 5-13-64	
		ELECT. DES.	DATE	CL337 A
		MECH. DES.	DATE	SHEET
				REV. LTR.