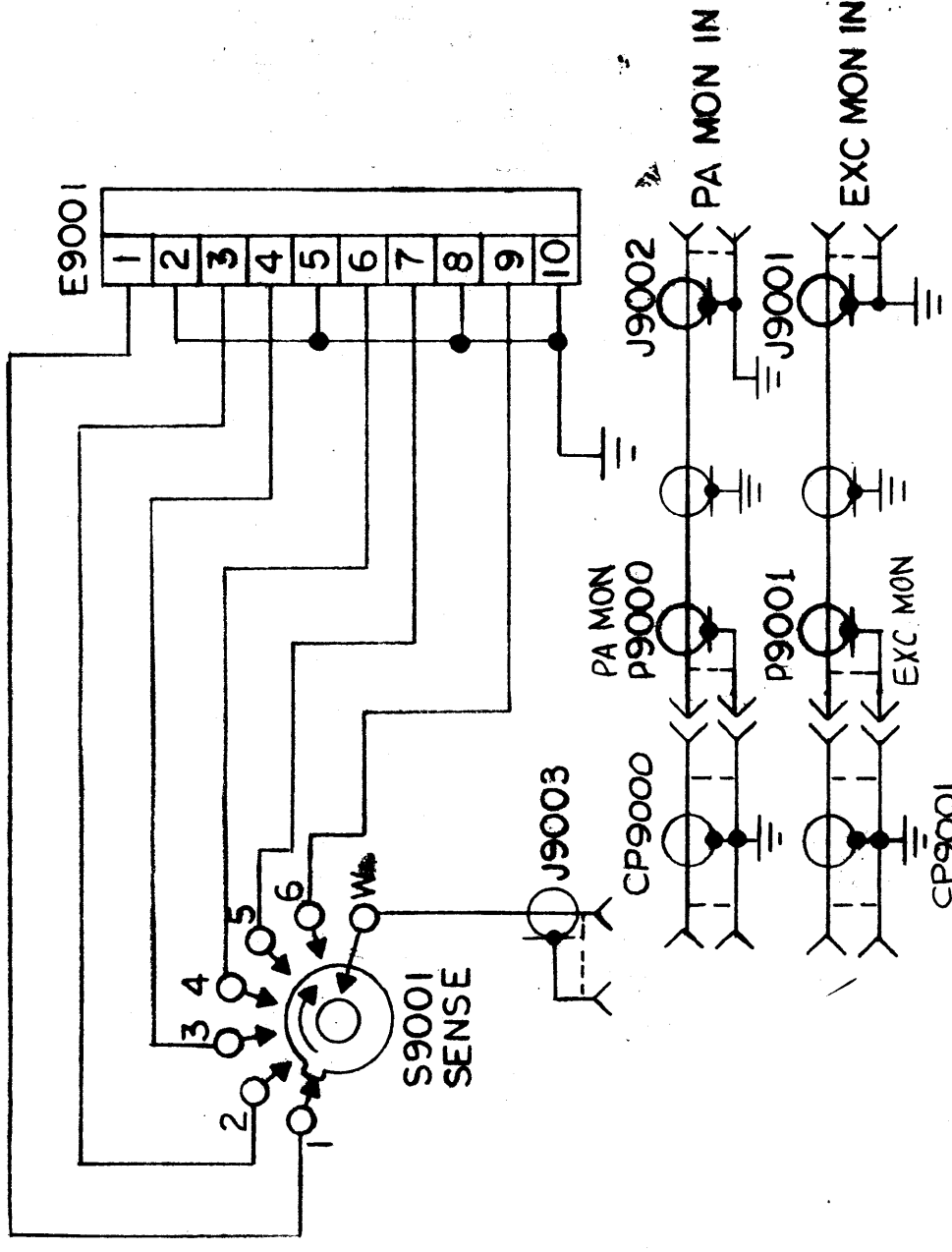
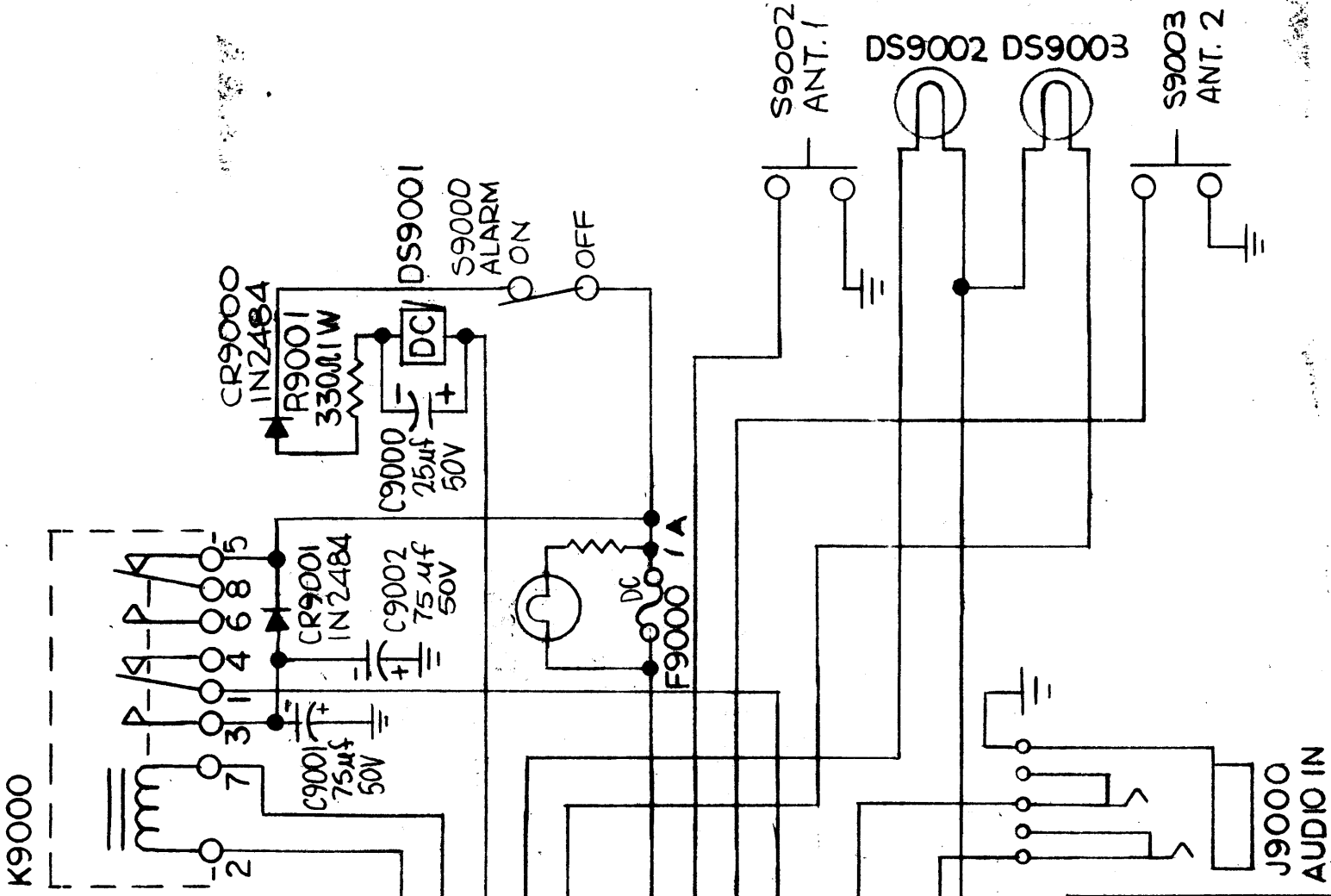


MISSING SYMBOLS	
DS9000	
R9000	

E9000	
1	Ø 2 230V SWITCHED
2	Ø 3 230V ALARM
3	ANT IND 1
4	ANT IND 2
5	5VAC
6	26.5VDC
7	ANT SW 1
8	ANT SW 2
9	COIL COAX SW
10	GRD
11	AUDIO
12	AUDIO
13	AUDIO
14	

S9001 SENSE FUNCTION	
1	100MW TRIG
2	2ND AMPL TUNE
3	2ND AMPL PLATE TRIG
4	PA TUNE
5	PA PLATE TRIG
6	PA LOAD



REVISIONS				
SYM	DESCRIPTION	DATE	E.M.N. NO.	DRAFT
X	EXP RELEASE	9-1-66	X	JBC
X1	J9003 WAS J9005, CP9000-CP9001 ADDED, P9000-P9001 WERE J9003-J9004	10-4-66	X1	JBC
X2	C9001, 9002, CR9001 ADDED MISSING SYM. ADDED	12-13-66	X2	JBC
Ø	ORIGINAL RELEASE FOR PRODUCTION	12/30/66	Ø	RME
A	SHIELD SYMBOL ADDED J9001 & J9002.	3-7-67	17926	L.A.K.

CR 1206

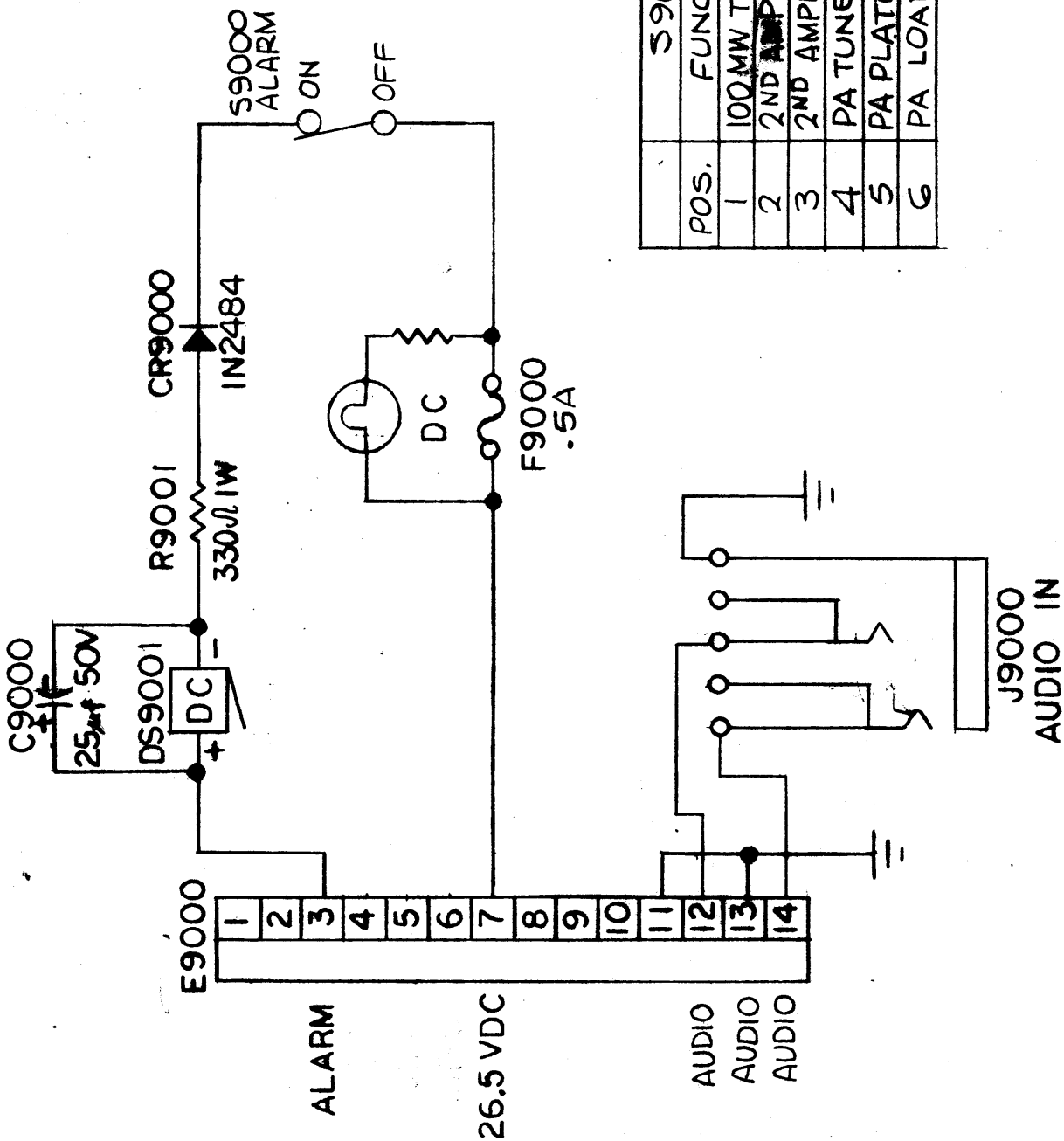
REQD.	ITEM	PART NUMBER	DESCRIPTION	SYMBOL
F BUDETTI				
LIST OF MATERIAL				
THE TECHNICAL MATERIEL CORP. MAMARONECK, NEW YORK				
TITLE SCHEMATIC, MONITOR PANEL				
DRAWN JBC		DATE 5-1-66	DATE 5-1-66	DATE 5-1-66
CHECKED		DATE	DATE	DATE
ELE. T. DES. JBC		DATE	DATE	DATE
MECH. DES. JBC		DATE	DATE	DATE
M/L JBC		DATE 12/30/66	DATE	DATE
UNLESS OTHERWISE SPECIFIED DIMENSIONS ARE IN INCHES AND INCLUDE CHEMICALLY APPLIED OR PLATED FINISHES		FRACTIONS X ± .01 XX ± .01 XXX ± .005		
TOLERANCES		± 1/64 ANGLES ± 0 .30'		

NOTES

THE CONTENTS OF THIS DRAWING ARE THE EXCLUSIVE PROPERTY OF THE TECHNICAL MATERIEL CORP. ITS UNAUTHORIZED USE OR REPRODUCTION IN WHOLE OR IN PART IS STRICTLY FORBIDDEN.

QTY./UNIT	MODEL USED ON	ASBY. NO.
SCALE	AX646	

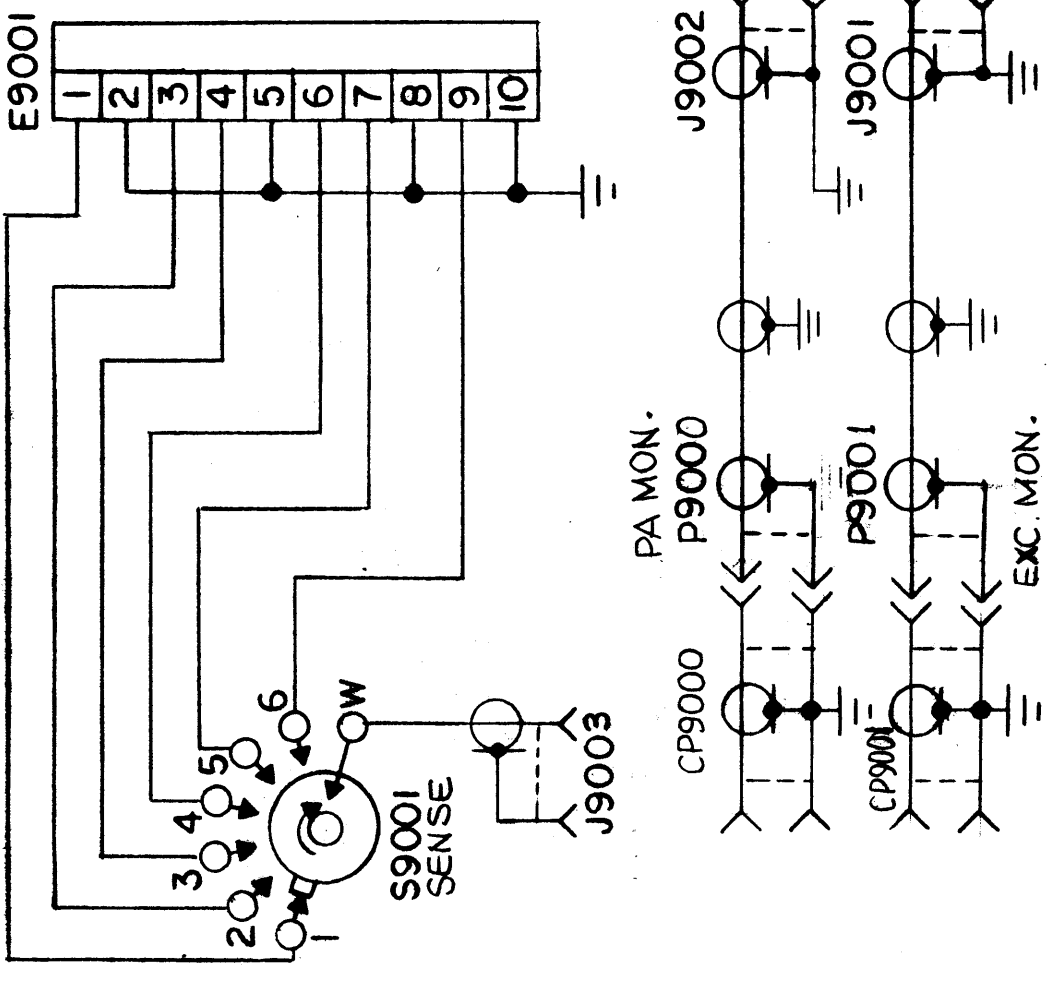
MISSING SYMBOLS	
DS9000	
R9000	



POS.	S9001 SENSE FUNCTION
1	100 MW TRIG
2	2ND AMPL TUNE
3	2ND AMPL PLATE TRIG
4	PA TUNE
5	PA PLATE TRIG
6	PA LOAD

REVISIONS			
SYM	DESCRIPTION	DATE	EM.N. NO.
X	EXP RELEASE	9-2-66	X
X1	J9003 WAS J9005, CP9004, CP9001 ADDED, P9000-P9001 WERE J9003, J9004	10-4-66	X1
X2	DS9000, R9000 DEL.	12-13-66	X2
Ø	ORIGINAL RELEASE FOR PRODUCTION	12-30-66	Ø
A	SHIELD SYMBOL ADDED J9001 & J9002	3-7-67	17926

CK 1207



REQ'D.	ITEM	PART NUMBER	DESCRIPTION	SYMBOL
F BUDETTI				
LIST OF MATERIAL				
THE TECHNICAL MATERIEL CORP. MAMARONECK, NEW YORK				
TITLE SCHEMATIC, MONITOR PANEL				
DRAWN JBC		DATE 9-2-66	FINAL APPROVED <i>[Signature]</i>	REV. NO. A
CHECKED JBC		DATE		
ELECT. DES. <i>[Signature]</i>		DATE		
MECH. DES. <i>[Signature]</i>		DATE		
M/L <i>[Signature]</i>		DATE 1/4/67	SHEET	
			CK 1207	
				REPROVAL NO. 4404

NOTES

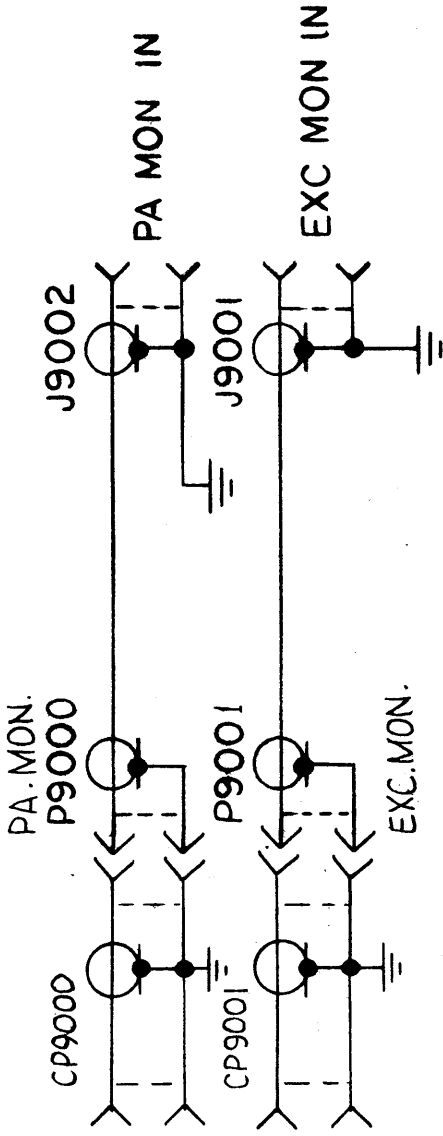
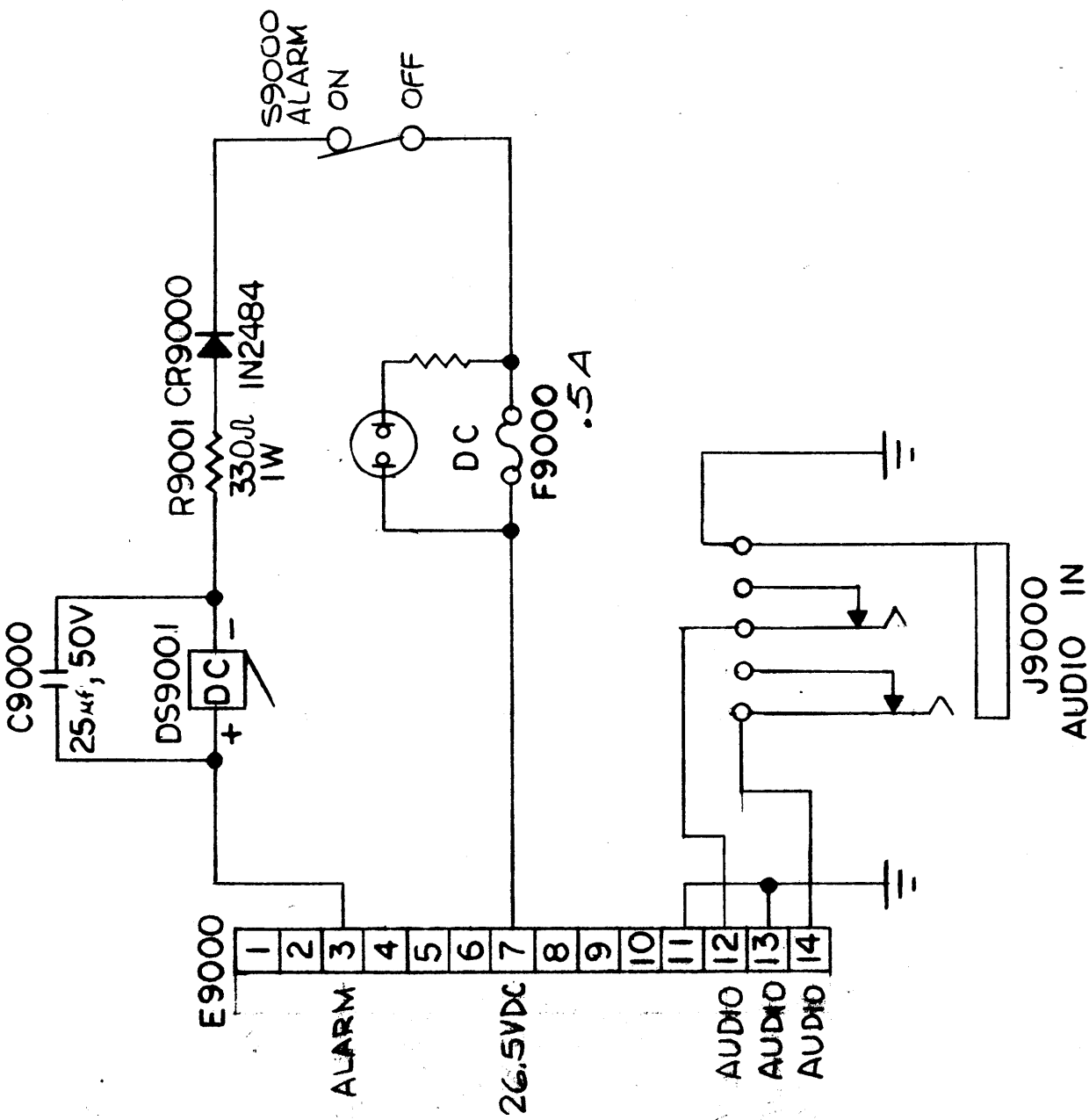
THE CONTENTS OF THIS DRAWING ARE THE EXCLUSIVE PROPERTY OF THE TECHNICAL MATERIEL CORP. ITS UNAUTHORIZED USE OR REPRODUCTION IN WHOLE OR IN PART IS STRICTLY FORBIDDEN.

QTY./UNIT	SCALE	MODEL USED ON	ASBY. NO.
1		AX633	

REVISIONS

SYM	DESCRIPTION	DATE	E.M.N. NO.	DRAFT	CHKD	APPD
X	EXP. RELEASE	9-3-64	X	JBC	JBC	MA
X1	P9000, P9001 WERE J9003, J9004, CP9000 - CP9001 ADDED.	10-4-66	X1	JBC	JBC	MA
X2	DC 9000 & R9000 DELETED FROM F9000	1-17-67	X2	JBC	JBC	MA
X3	GRD ADDED ON J9001 & J9002	2-21-67	X3	JBC	JBC	MA
Ø	ORIGINAL RELEASE FOR PRODUCTION	4/23/67	Ø	CV	CV	MA
A	.5A TO F9000 ADDED	12/27/69	19138	K44	JBC	FB

CK1208



NOTES

THE CONTENTS OF THIS DRAWING ARE THE EXCLUSIVE PROPERTY OF THE TECHNICAL MATERIEL CORP. ITS UNAUTHORIZED USE OR REPRODUCTION IN WHOLE OR IN PART IS STRICTLY FORBIDDEN.

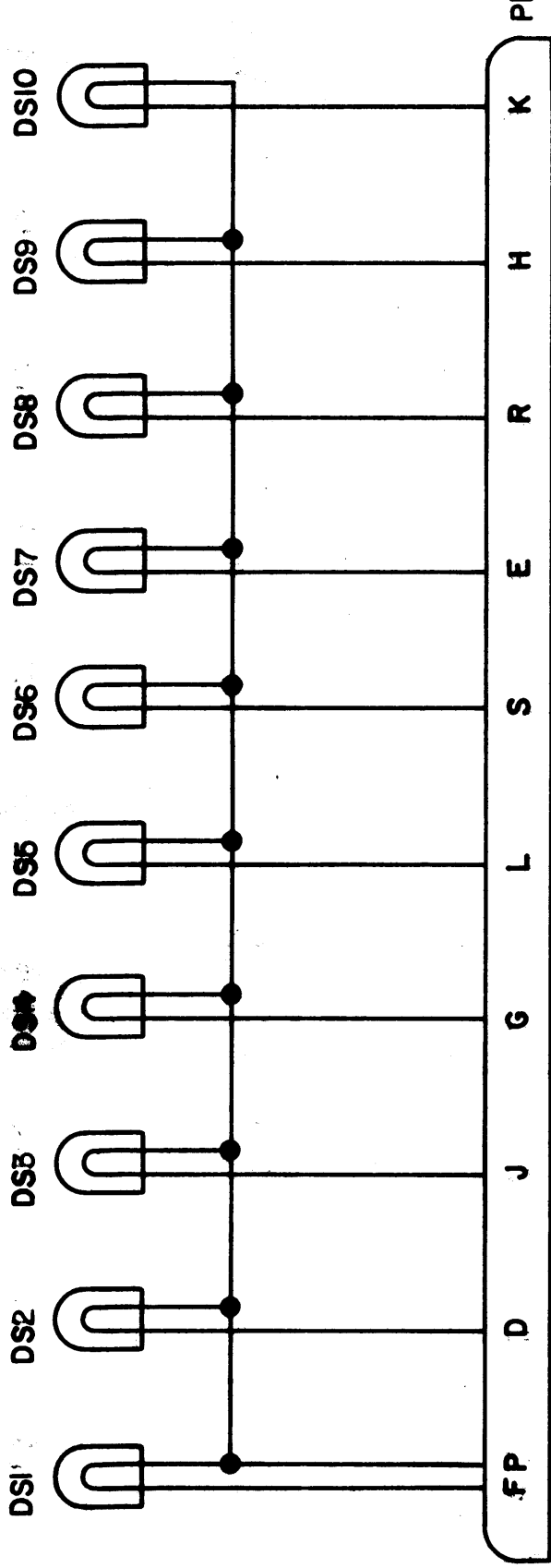
QTY./UNIT	SCALE	MODEL USED ON	ASBY. NO.
1		AX647	

REQ'D.	ITEM	PART NUMBER	DESCRIPTION	SYMBOL
	F BUDETTI		LIST OF MATERIAL	
	MATERIAL		THE TECHNICAL MATERIEL CORP. MAMARONECK, NEW YORK	
	FINISH		TITLE SCHEMATIC, MONITOR PANEL	
			DRAWN JBC	DATE 9-1-66
			CHECKED	DATE
			ELECT. DES.	DATE
			MECH. DES.	DATE
			CK1208	SHEET

M/L JBC

SYN	DESCRIPTION	DATE	E.M.N. NO.	DRAFT	CHKD	APPO
X1	DELETED DSIII THRU DSIII, MODEL WAS RSSA-16	6-23-67		L.A.K		
X2	SYMBOL #'S WERE 100 SERIES	9-14-67		E.N.J.		
X3	PI SYM WAS P101	10/30/67	#	J.H.		
X4	PIN NOS OF PI CHANGED	5/23/69	X4	G.F.		
Ø	ORIGINAL RELEASE FOR PRODUCTION	9/18/69		CU		

CK1213



SYMBOLS	
LAST	MISSING
DSIII	
PI	

QTY./UNIT	SCALE	MODEL USED ON	ASSY. NO.
		RSSA-10	
		CODE	
THE CONTENTS OF THIS DRAWING ARE THE EXCLUSIVE PROPERTY OF THE TECHNICAL MATERIEL CORP. ITS UNAUTHORIZED USE OR REPRODUCTION IN WHOLE OR IN PART IS STRICTLY FORBIDDEN.			

NOTES

5-2

7470

REQ'D.	ITEM	PART NUMBER	DESCRIPTION	SYMBOL
EATON				
LIST OF MATERIAL				
MATERIAL				
FINISH				
UNLESS OTHERWISE SPECIFIED DIMENSIONS ARE IN INCHES AND INCLUDE CHEMICALLY APPLIED OR PLATED FINISHES				
DECIMALS				DATE
± 0.05				9-22-68
± 0.01				DATE
± 0.005				DATE
FRACTIONS				DATE
± 1/64				DATE
ANGLES				DATE
± 0 30'				DATE
TOLERANCES				DATE
				DATE
				DATE
				DATE
				DATE

THE TECHNICAL MATERIEL CORP.
MAMARONECK, NEW YORK

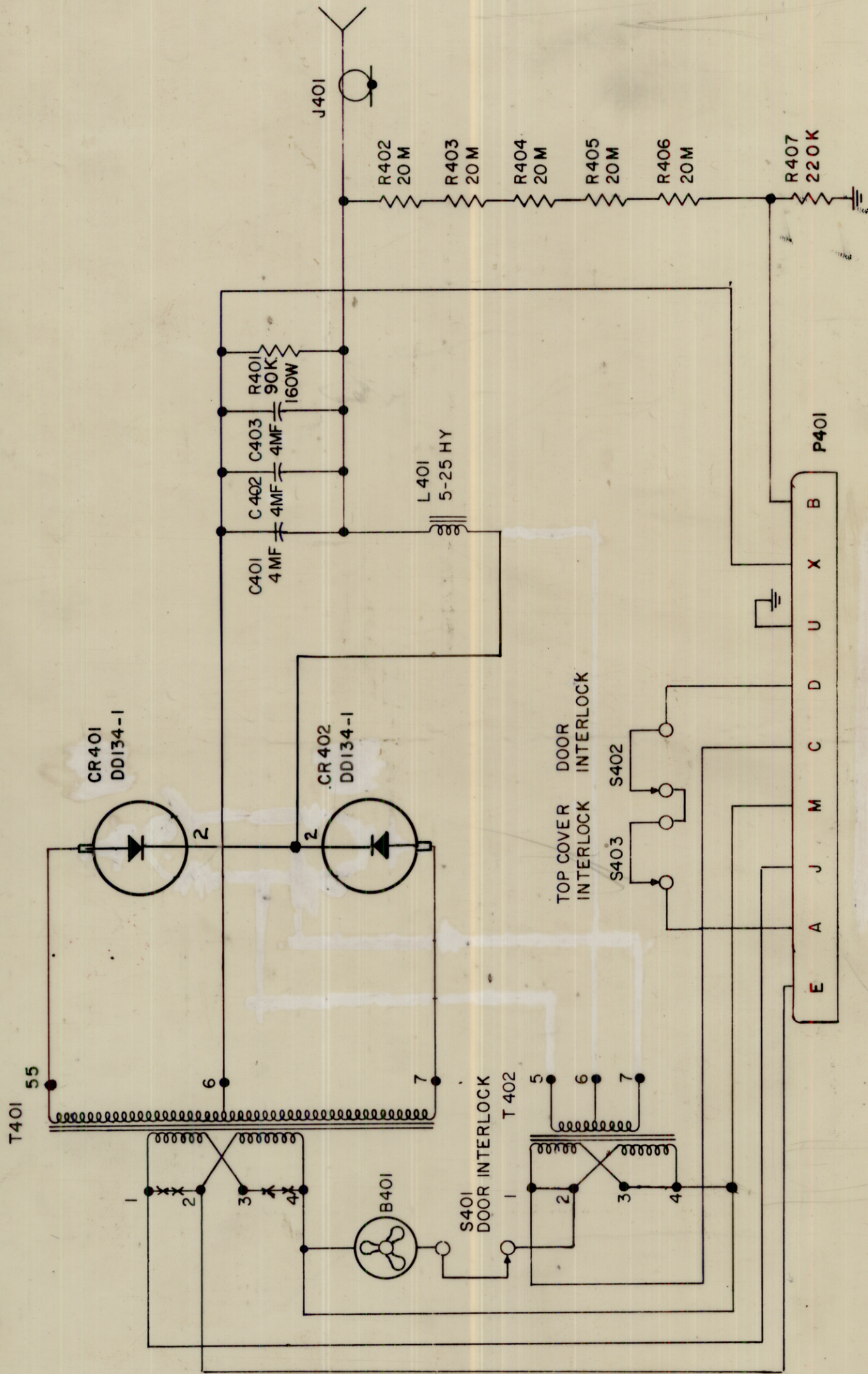
SCHEMATIC, DIAGRAM (RSSA-10)

CK1213

CK1222

LAST SYMBOLS

- B 401
- C 403
- J 401
- L 401
- R 407
- S 403
- T 401
- CR 402
- P 401



FOR 230V OPERATION REMOVE
JUMPERS MARKED *** AND
CONNECT TERMINALS 2 8 3
AT T401.

REQ. ITEM	PART NO.	DESCRIPTION	SYMBOL
		THE TECHNICAL MATERIEL CORP. MAMARONECK, NEW YORK	
		SCHEMATIC DIAGRAM	
		KIT 261	
		DRAWN <i>J. Miller</i>	CHECKED <i>AM Hay</i>
		TYPE & TEMPER	HEAT TREAT. SPEC.
		FINISH & SPEC. NO.	ELEC. DES. APP. MECH. DES. APP.
			ML 974
			CK1222
			A

REQ. PER UNIT	MODEL	PROJECT NO.	ASSY. NO.	DATE
	KIT 261			10-28-66

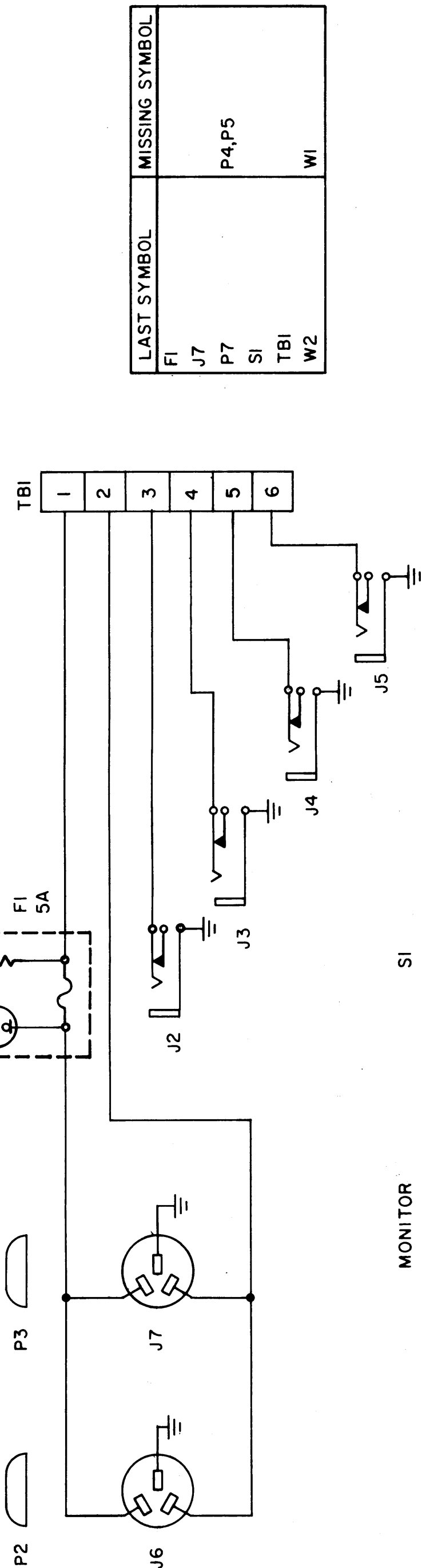
ISSUE ITEM	CHANGED FROM	DATE	CH. NO.	DRAFTS	CHECKER	ENG. APP.
A	ON C401, C402 & C403 4 MF WAS 4	11/25/68	19099	X	<i>FB</i>	<i>FB</i>
Ø	ORIGINAL RELEASE	11/8/66	Ø			
X	EXPERIMENTAL RELEASE	10/20/66	X	RME		

SCALE:

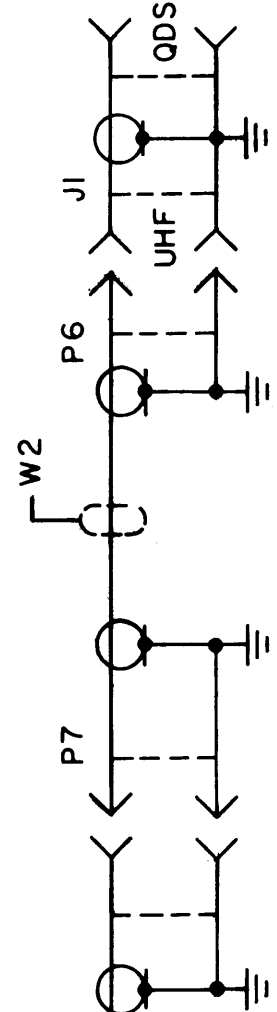
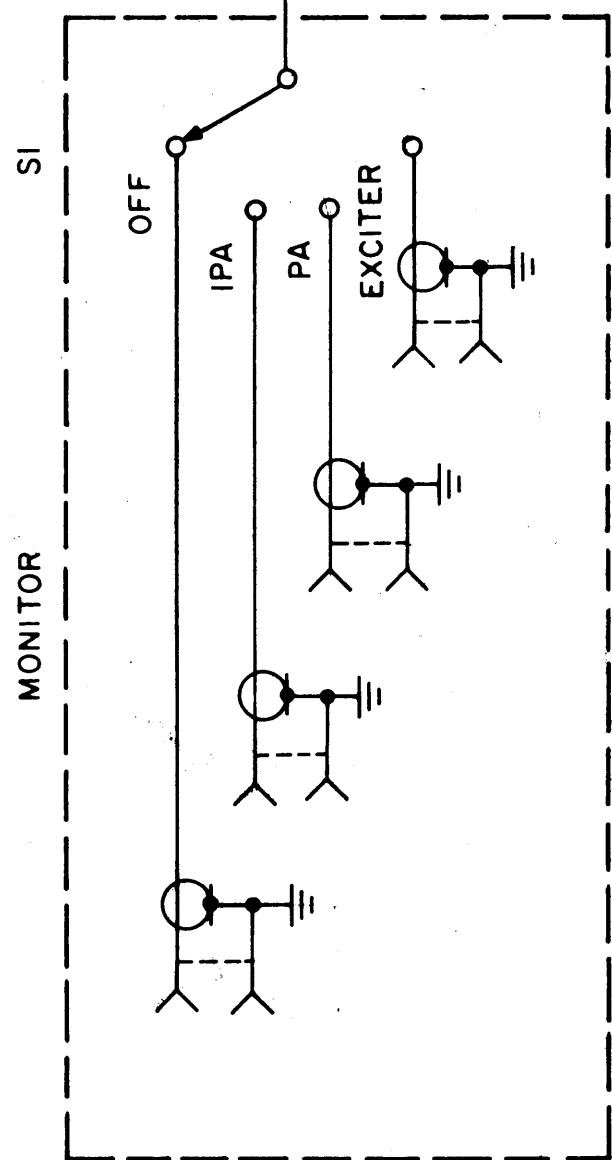
MAXIMUM ALLOWABLE TOLERANCES HAVE BEEN DETERMINED AND ANY DEVIATIONS WILL BE CAUSE FOR REJECTION. REMOVE ALL BURRS AND SHARP EDGES

REVISIONS				
ZONE	LTR	DESCRIPTION	DATE	E.M.N.NO
	X	EXPERIMENTAL RELEASE	4-27-67	
	Ø	ORIG RELEASE FOR PROD	7/28/67	Ø

APPD
CHKD
DRAFT
L.A.K.
CV



LAST SYMBOL	MISSING SYMBOL
FI	
J7	
P7	P4,P5
SI	
TBI	
W2	WI



LOOSE ITEM

REQ'D ITEM	PART NUMBER	DESCRIPTION	SYM.
F. BUDETTI		LIST OF MATERIAL	

THE TECHNICAL MATERIEL CORP.
MAMARONECK, NEW YORK

SCHEMATIC DIAGRAM

UNLESS OTHERWISE SPECIFIED DIMENSIONS ARE IN INCHES AND INCLUDE CHEMICALLY APPLIED OR PLATED FINISHES	DECIMALS	FRACTIONS
.X ± .05	TOLS.	1/64
.XX ± .01	ANGLES	0°-30'
.XXX ± .005		

QTY / UNIT	MODEL USED ON	ASS'Y NO.
	APP-15	
APPLICATION		
CODE		

DATE	DATE	DATE	DATE
7/28/67			
			4-27-67

ELECT. DES.
CHECKED
DRAWN L. KOLIBABEK
M/L QA

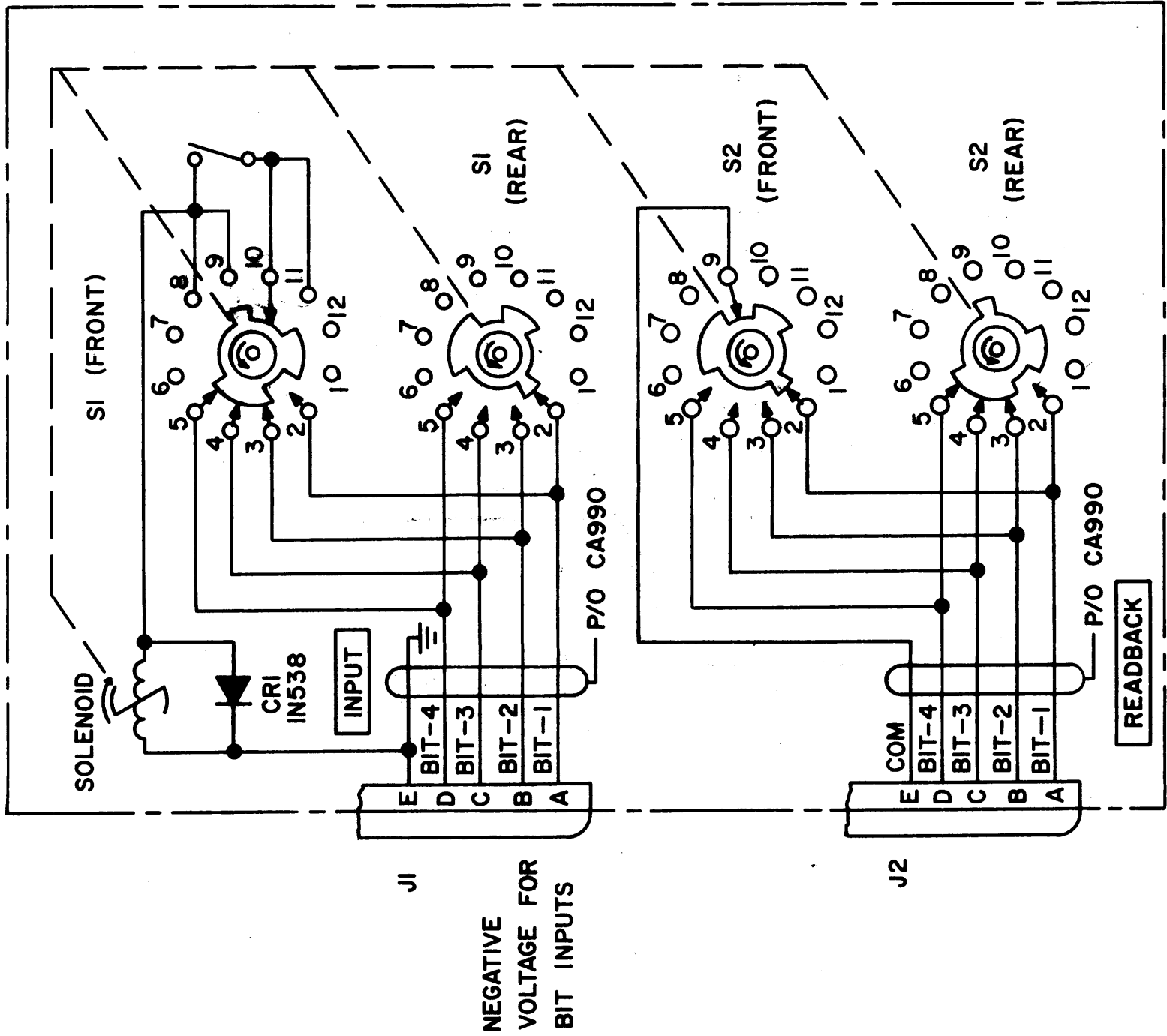
FINISH

SIZE	CODE IDENT. NO.	DWG NO.	ISSUE
B	82679	CK1241	Ø

REVISIONS

SYM	DESCRIPTION	DATE	E.M.N. NO.	DRAFT	CHKD	APPD
X1	REVERSED DIRECTION OF NO. SERIES ON SWITCHES & RELOC WAFER 1 POS. C.I.C.W.	3-2-67		RME		
Ø	ORIGINAL RELEASE FOR PRODUCTION	3-2-67		RME		

Ø CK1246



QTY./UNIT	SCALE	SMEC-1	AX541-3
MODEL USED ON	CODE		ASSY. NO.

THE CONTENTS OF THIS DRAWING ARE THE EXCLUSIVE PROPERTY OF THE TECHNICAL MATERIEL CORP. ITS UNAUTHORIZED USE OR REPRODUCTION IN WHOLE OR IN PART IS STRICTLY FORBIDDEN.

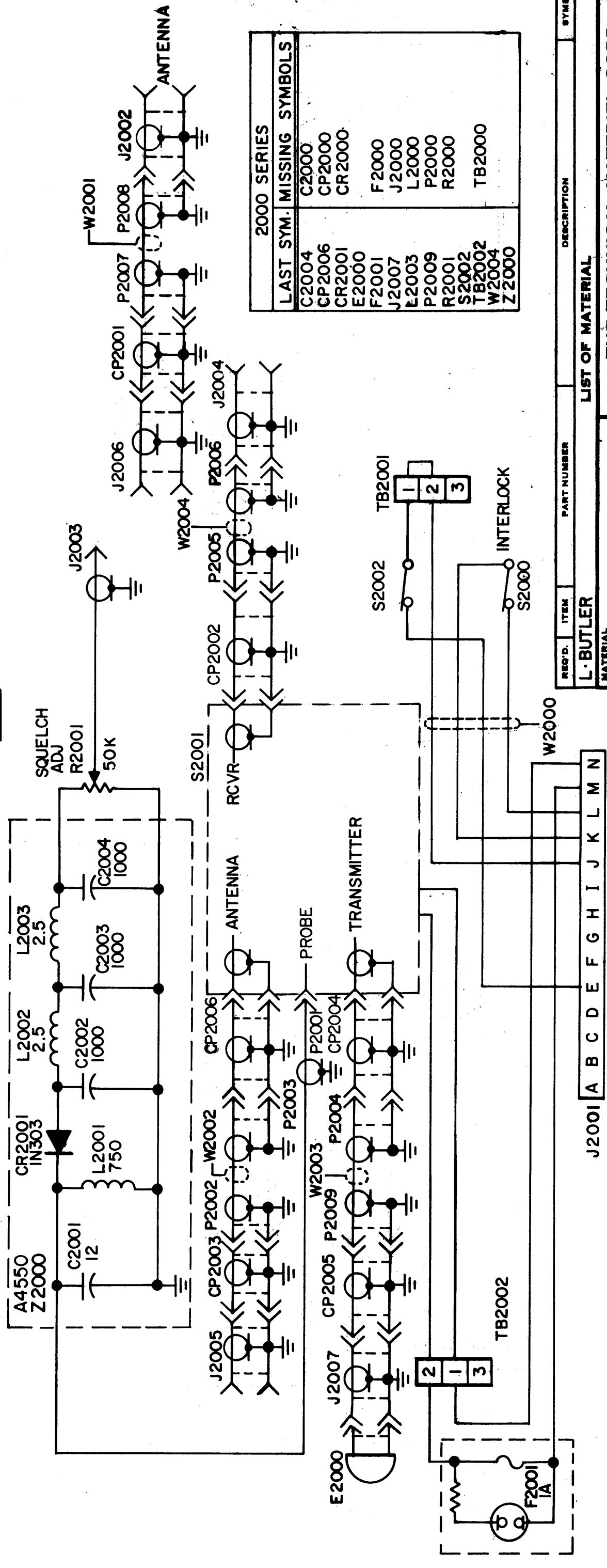
NOTES

REQ'D.	ITEM	PART NUMBER	DESCRIPTION	SYMBOL
LIST OF MATERIAL				
MATERIAL				
FINISH				
UNLESS OTHERWISE SPECIFIED DIMENSIONS ARE IN INCHES AND INCLUDE CHEMICALLY APPLIED OR PLATED FINISHES				
DECIMALS				
.X ± .05				
.XX ± .01				
.XXX ± .005				
FRACTIONS				
± 1/64				
ANGLES				
± 0° 30'				
DRAWN WHW				
CHECKED <i>[Signature]</i>				
DATE 11-23-66				
FINAL APPROVAL <i>[Signature]</i>				
DATE 3/2/67				
TITLE				
DIAGRAM, SCHEMATIC				
THE TECHNICAL MATERIEL CORP.				
MAMARONECK, NEW YORK				
REV. LTR.				
Ø				
CK1246				
SHEET				

CR1258

REVISIONS

SYM	DESCRIPTION	DATE	E.M.N. NO.	DRAFT	CHKD	APPD
X	EXP. RELEASE	2-14-67	X	HA		
X1	LIFEDATED	5-19-67	X1	NEW		
Ø	ORIG. RELEASE FOR PRODUCTION	5-22-67	Ø	RG		
A	UPDATED	6-29-67	18297	L.A.K.		



2000 SERIES

LAST SYM.	MISSING SYMBOLS
C2004	C2000
CP2006	CP2000
CR2001	CR2000
E2000	F2000
F2001	J2000
J2007	L2000
L2003	P2000
P2009	R2000
R2001	TB2002
S2002	W2000
TB2002	Z2000
W2004	
Z2000	

LIST OF MATERIAL

REQ'D.	ITEM	PART NUMBER	DESCRIPTION	SYMBOL
			L. BUTLER	
			MATERIAL	
			FINISH	

THE TECHNICAL MATERIEL CORP.
MAMARONECK, NEW YORK

DIAGRAM, SCHEMATIC

DRAWN H. AUSTIN	DATE 2-10-67	FINAL APPROV. [Signature]	DATE [Blank]
CHECKED [Signature]	DATE [Blank]	ELECT. DES. [Signature]	DATE 5-19-67
Mech. Des. [Signature]	DATE [Blank]	SHEET CKI258	
			REV. LVL. A

UNLESS OTHERWISE SPECIFIED:
ALL CAPACITORS ARE IN $\mu\mu\text{f}$

NOTES

THE CONTENTS OF THIS DRAWING ARE THE EXCLUSIVE PROPERTY OF THE TECHNICAL MATERIEL CORP. ITS UNAUTHORIZED USE OR REPRODUCTION IN WHOLE OR IN PART IS STRICTLY FORBIDDEN.

QTY./UNIT	KIT-318-1	MODEL USED ON	AX-650-1
SCALE		CODE	
		ASBY. NO.	

MIL CA

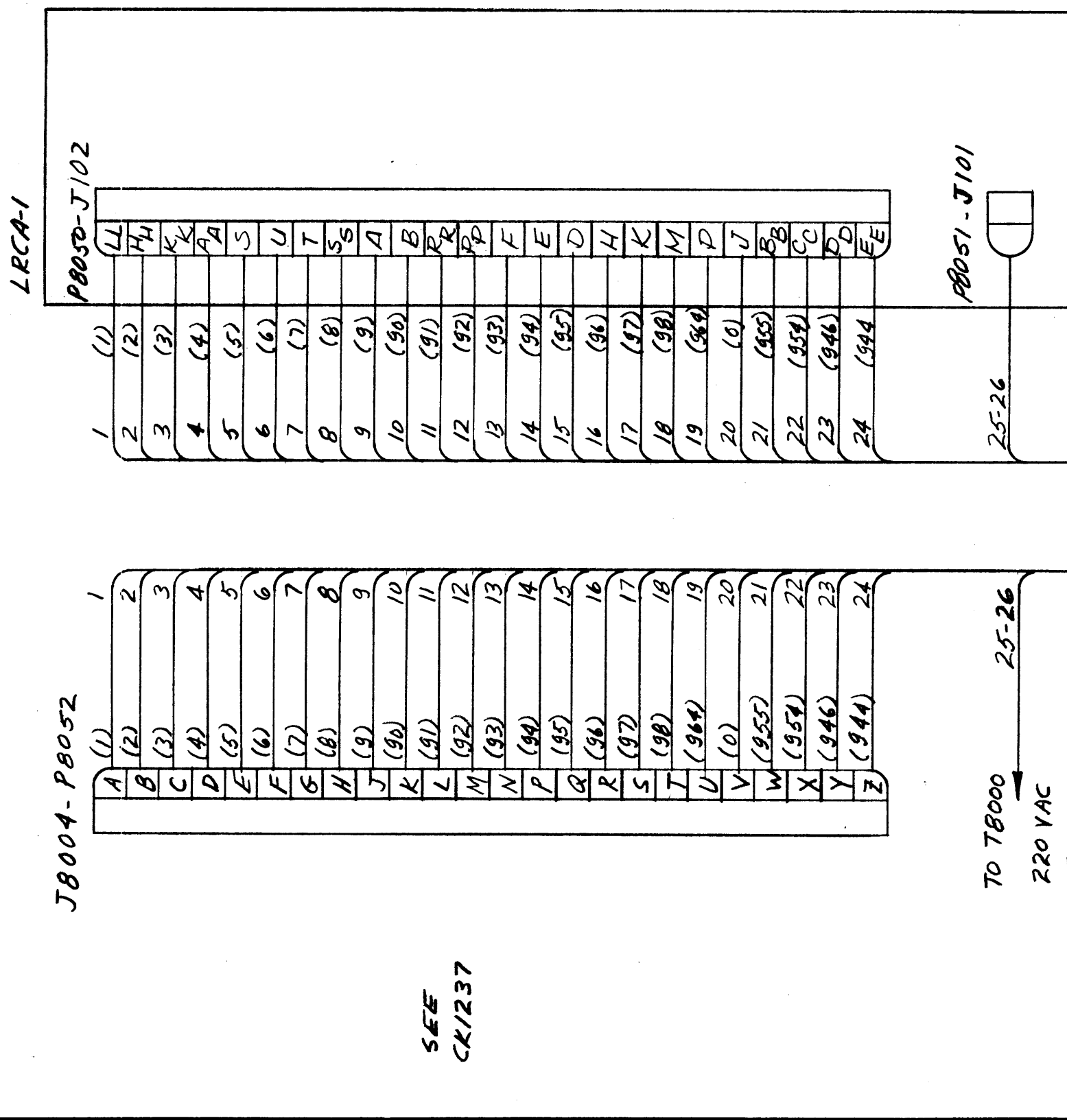
REPROVAL NO. 45CH

35282

REVISIONS

SYM	DESCRIPTION	DATE	E.M.N. NO.	DRAFT	CHKD	APPD
X	EXP. RELEASE	12-8-66				
Ø	ORIGINAL RELEASE FOR PRODUCTION	3-21-67		RME		
A	RE-NUMBER PINS ON P8050-J102 OF LRCA-1	11/17/72 20936		EE	Ø	Ø

CR1260



SEE
CR1237

TO 78000
220 VAC
TAPS

NUMBERS IN PARENTHESES
ARE COLORS.

NOTES

REQ'D.	ITEM	PART NUMBER	DESCRIPTION	SYMBOL
	BURETTI		LIST OF MATERIAL	
			THE TECHNICAL MATERIEL CORP. MAMARONECK, NEW YORK	
			TITLE DIAGRAM WIRING	
			DRAWN CHECKED	DATE DATE
			ELECT. DES. MECH. DES.	DATE DATE
			M/L	1-31-67

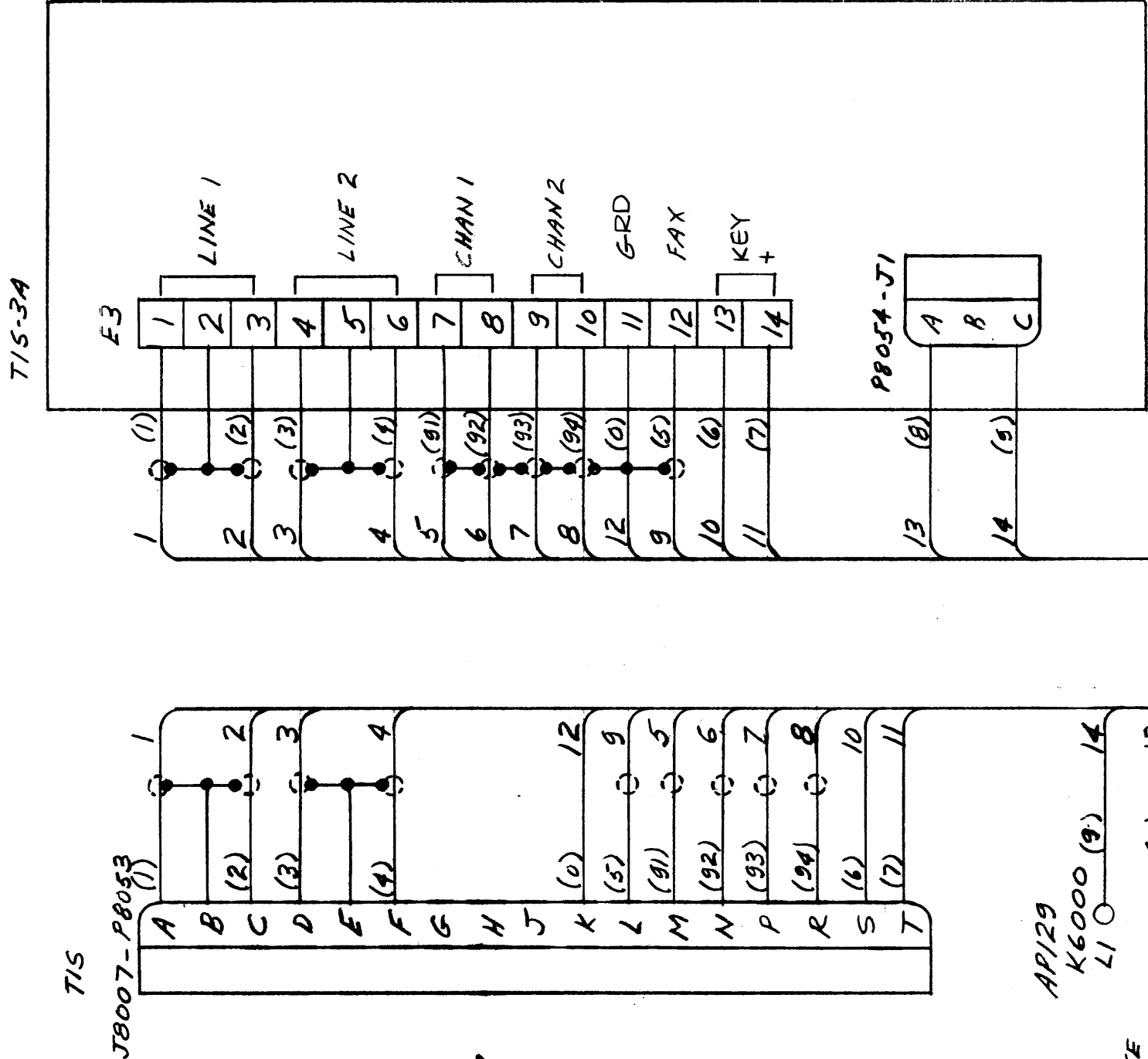
QTY./UNIT	SCALE	MODEL USED ON	ASBY. NO.
1		RAK110-26	
		CODE	S401-451
			S401-
			S401-

THE CONTENTS OF THIS DRAWING ARE THE EXCLUSIVE PROPERTY OF THE TECHNICAL MATERIEL CORP. ITS UNAUTHORIZED USE OR REPRODUCTION IN WHOLE OR IN PART IS STRICTLY FORBIDDEN.

REVISIONS

SYM	DESCRIPTION	DATE	E.M.N. NO.	DRAFT	CHKD	APPD
X	EXP. RELEASE	12-8-66				M
XI	CHG 17.5, 6.2, 8 ON P8053	1-30-67	XI			
Ø	ORIGINAL RELEASE FOR PRODUCTION	3-20-67		L.P.K.		

Ø CK1261



TIS
JB007-P8053
SEE
CK1237

API29
K6000 (9) 14
L1
SEE
CK1046 120 (8) 13
CA1293

REQ'D.	ITEM	PART NUMBER	DESCRIPTION	SYMBOL
F.	BUDETTI		LIST OF MATERIAL	
			THE TECHNICAL MATERIEL CORP. MAMARONECK, NEW YORK	
FINISH				
TITLE DIAGRAM WIRING				
DRAWN		DATE	DATE	DATE
CHECKED		6 Dec 66		3/20/67
ELECT. DES.				
MECH. DES.		1-21-67		
M/L		1-21-67		
SHEET		CK1261		
REV. LTR.				

Q'TY./UNIT	MODEL USED ON	ASSY. NO.
SCALE	CODE	
1	RAK 110-2N	

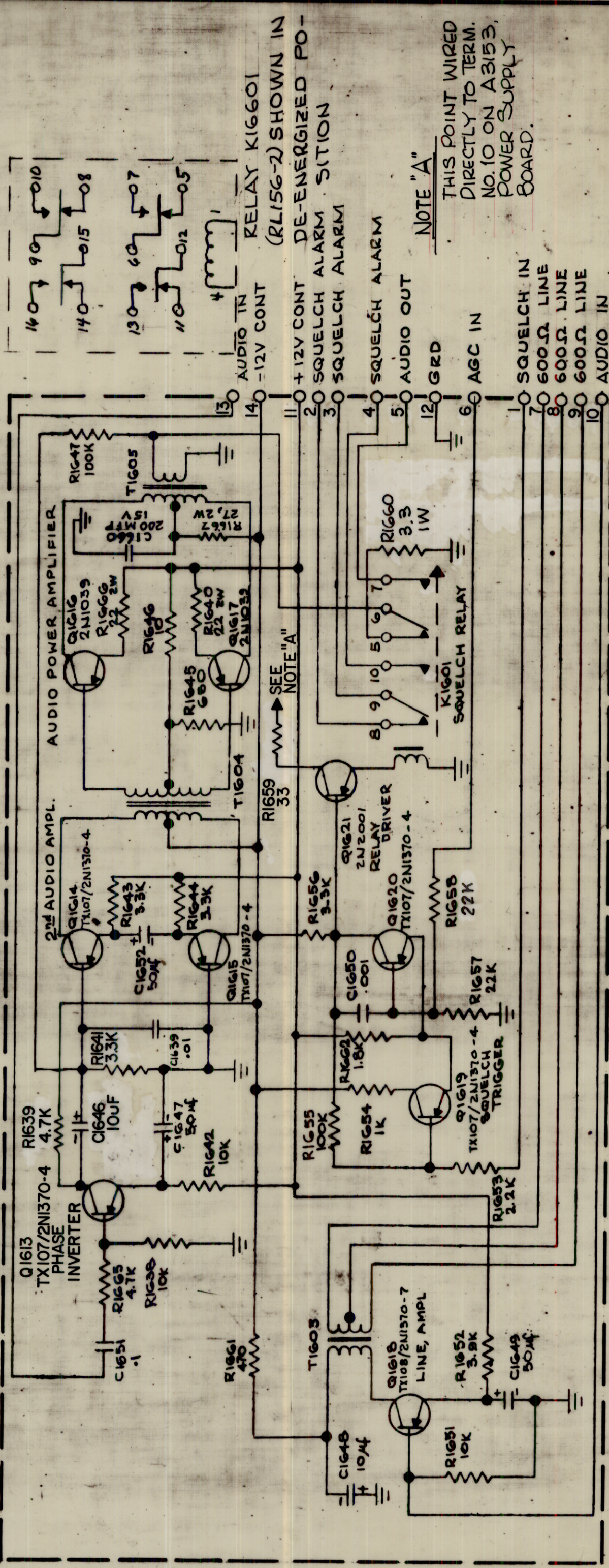
THE CONTENTS OF THIS DRAWING ARE THE EXCLUSIVE PROPERTY OF THE TECHNICAL MATERIEL CORP. ITS UNAUTHORIZED USE OR REPRODUCTION IN WHOLE OR IN PART IS STRICTLY FORBIDDEN.

NOTES

REVISIONS

REV.	DATE	S.M.N. NO.	DRAFT	CHKD	APPD
X	12-22-66		H.L.A.		
0	1-18-67		L.A.K.		
A	9-19-67	18508	H.G.		EFH/10

CK1273



QTY./UNIT	SCALE	STR-1Y	MODEL USED ON	CODE	ASBY. NO.

MATERIAL	FINISH	UNLESS OTHERWISE SPECIFIED DIMENSIONS ARE IN INCHES AND INCLUDE CHEMICALLY APPLIED OR PLATED FINISHES	DECIMALS I ± .08 II ± .01 III ± .005	TOLERANCES	FRACTIONS ± 1/64 ANGLES ± 9° 30'
POSE					

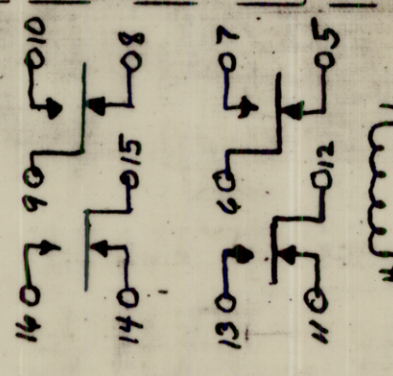
DESCRIPTION	SYMBOL
LIST OF MATERIAL	
THE TECHNICAL MATERIEL CORP. MAMARONECK, NEW YORK	
DIAGRAM, SCHEMATIC AUDIO BOARD - A3190	
DRAWN BY: H. AUSTIN	
CHECKED: H.L.A.	
ELECT. DES.:	
MECH. DES.:	
DATE: 12-22-66	
DATE: 1-12-67	
DATE: 1-16-67	
DATE: 1-16-67	
CK1273	
A	

NOTES

THE CONTENTS OF THIS DRAWING ARE THE EXCLUSIVE PROPERTY OF THE TECHNICAL MATERIEL CORP. ITS UNAUTHORIZED USE OR REPRODUCTION IN WHOLE OR IN PART IS STRICTLY FORBIDDEN.

NOTE "A"

THIS POINT WIRED DIRECTLY TO TERM. NO. 10 ON A3153, POWER SUPPLY BOARD.



AUDIO IN -12V CONT RELAY K16601 (RL156-2) SHOWN IN DE-ENERGIZED POSITION

+12V CONT SQUELCH ALARM SITION

SQUELCH ALARM

SQUELCH ALARM

AUDIO OUT

120 GRD

60 AGC IN

SQUELCH IN

600Ω LINE

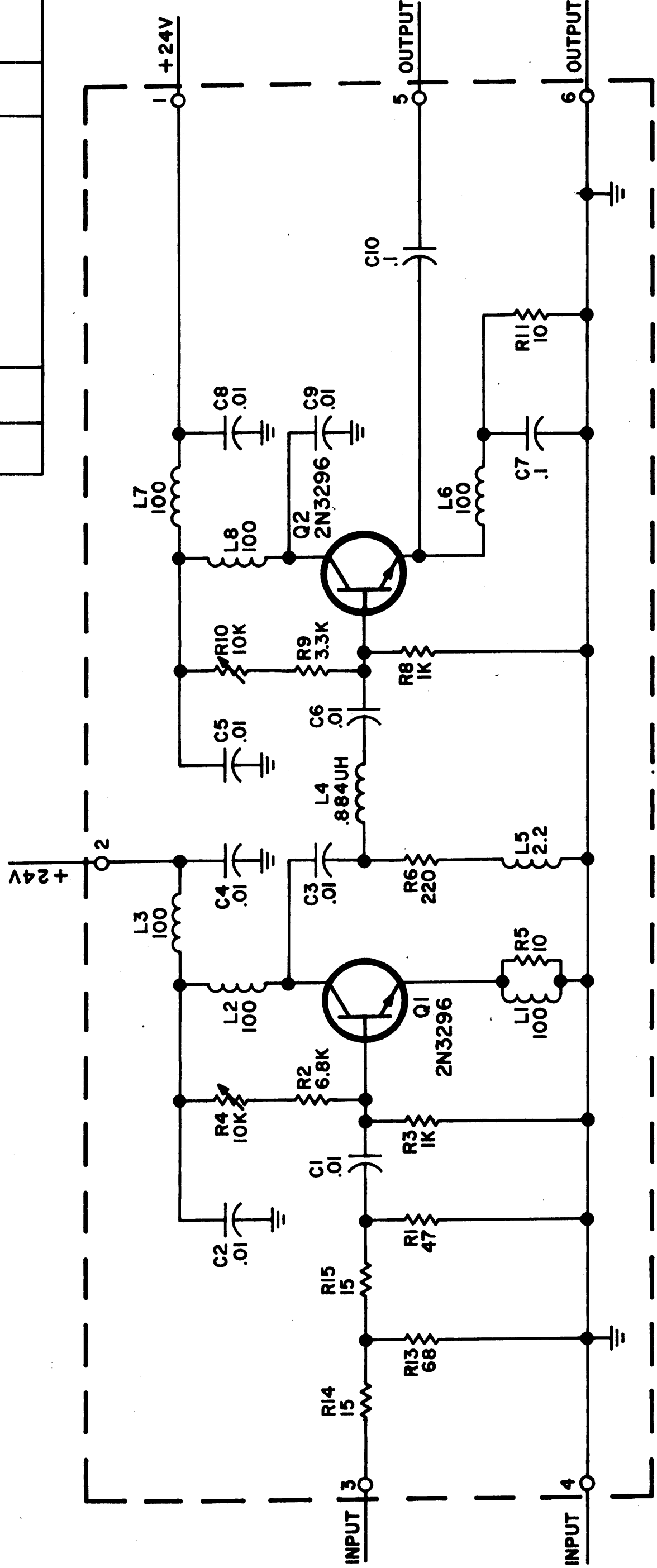
600Ω LINE

600Ω LINE

AUDIO IN

1 2 3 4 5

ZONE	LTR	DESCRIPTION	DATE	E.M.N. NO	DRAFT	CHKD	APPD
	X1	R7 DELETED	1-17-67	44	LHD		
	X2	R12 DELETED	2-2-67	42	LAK		
	Ø	ORG. RELEASE FOR PROJ 3/16/67			LAK		



UNLESS OTHERWISE SPECIFIED

ALL RESISTANCE VALUES ARE IN OHMS, 1/2 WATT.

ALL CAPACITANCE VALUES ARE IN MICROFARAD.

ALL INDUCTANCE VALUES ARE IN MICROHENRIES.

SYMBOLS	MISSING
LAST	R7 R12
C10 L8 Q2 R15	

REF: PC349

REQ'D ITEM	PART NUMBER	DESCRIPTION	SYM.
POSE			
LIST OF MATERIAL			
THE TECHNICAL MATERIEL CORP. MAMARONECK, NEW YORK			
DIAGRAM, SCHEMATIC LINEAR PWR AMPL BD			
DATE	DATE	DATE	DATE
2/13/67		1-17-67	
ELECT. DES.		DATE	
CHECKED		DATE	
DRAWN		DATE	
WHW		1-5-67	
SIZE	CODE IDENT. NO.	DWG NO.	ISSUE
B	82679	CKI275	Ø
SCALE	SHEET	OF	
	1	1	

QTY / UNIT	MODEL USED ON	ASS'Y NO.
	A4543	A4543
APPLICATION		
CODE		
MATERIAL		
FINISH		

NOTICE TO PERSONS RECEIVING THIS DRAWING
THE TECHNICAL MATERIEL CORPORATION claims proprietary right in the material disclosed hereon. This drawing is issued in confidence for engineering information only and may not be reproduced or used to manufacture anything shown hereon without permission from THE TECHNICAL MATERIEL CORPORATION to the user. This drawing is loaned for mutual assistance and is subject to recall at any time.

1 2 3 4 5

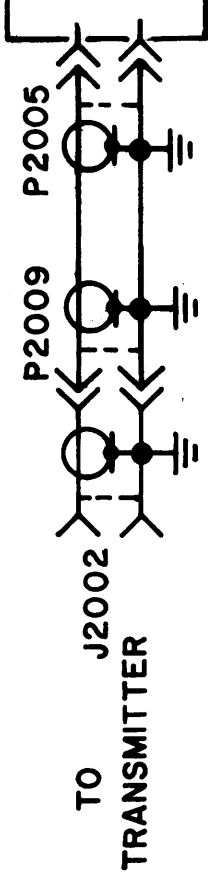
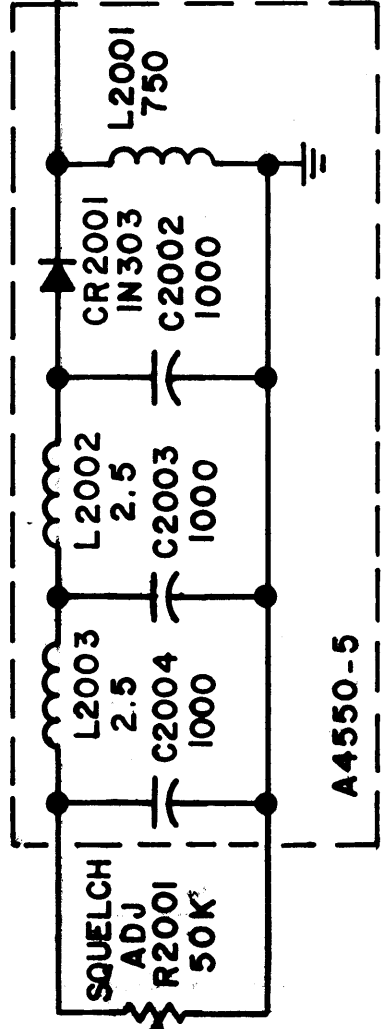
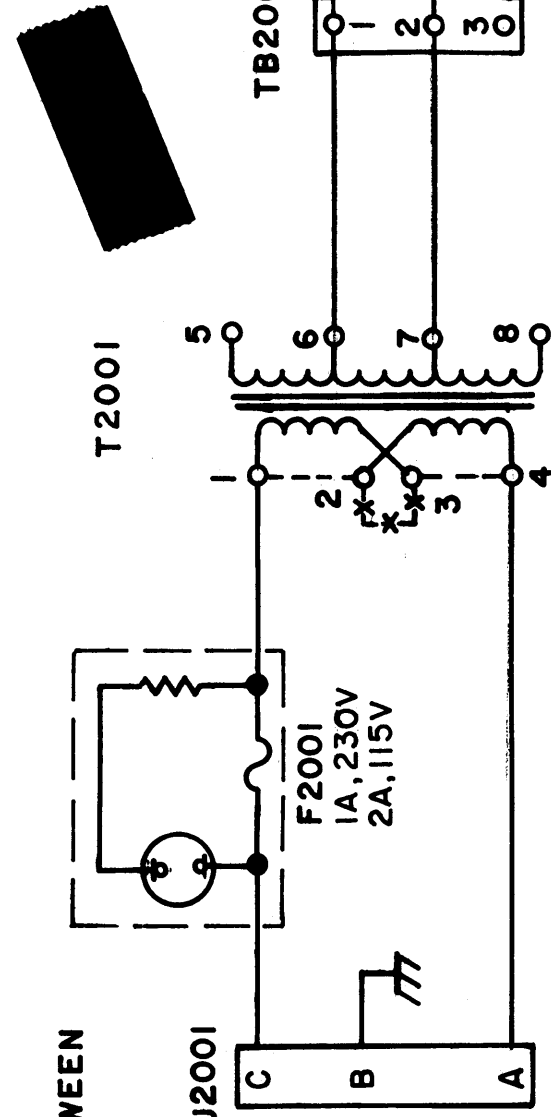
NOTE -

FOR 230V OPERATION OF T2001
 REMOVE JUMPERS MARKED --- BETWEEN
 TERMINALS 1 & 2 & 3 & 4.
 FOR 115V OPERATION
 ADD JUMPER MARKED -X-X-
 BETWEEN TERMINALS 2 & 3

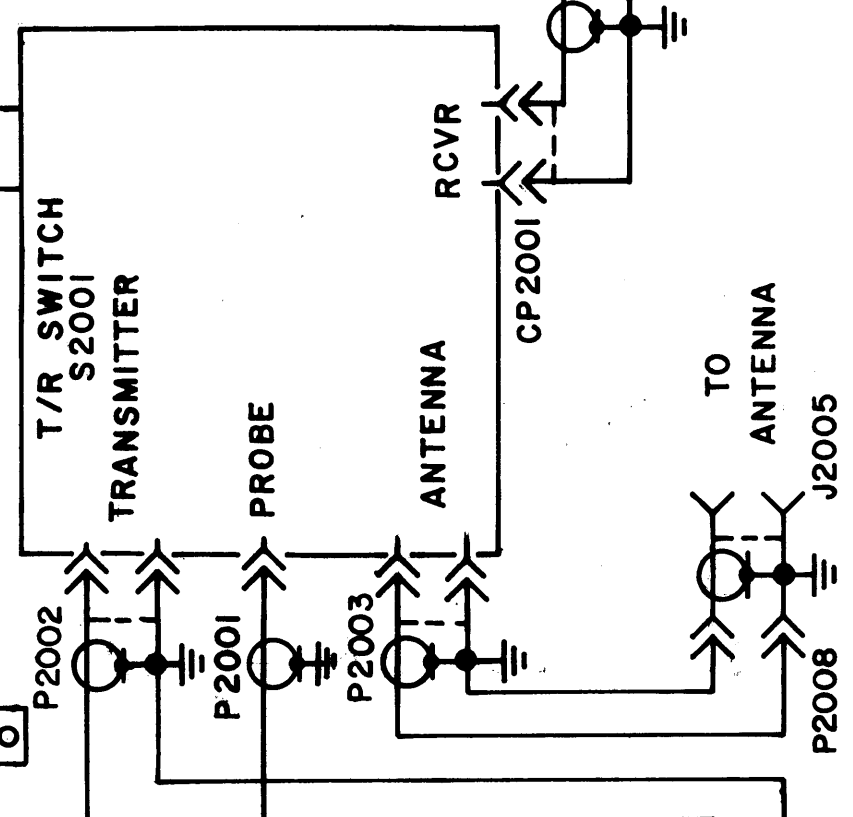
115/230V
 50/60~

ZONE	LTR	DESCRIPTION	DATE	E.M.N.O	DRAFT	CHKD	APPD
	X	EXP. RELEASE	1-16-67		GDL		
	X1	NOTE CLARIFIED	2-17-67		GDL		
		ORIG RELEASE FOR PROD	3/31/67		CV		
	A	J2002, P2007, P2008, P2009, P2006, P2003 RELOCATED	4/20/67		WFW		
	B	J2006 P/O CU-2 ADDED	5-24-67	18232	L.A.K.		

REVISIONS



UNLESS OTHERWISE SPECIFIED
 ALL RESISTOR VALUES ARE IN OHMS
 ALL CAPACITOR VALUES ARE IN MICRO-MICROFARADS
 ALL INDUCTOR VALUES ARE IN
 MICROHENRIES



DIRECTIONAL COUPLER

REQ'D ITEM	PART NUMBER	DESCRIPTION	SYM.
	CU-2		
	J2006		
	P/O CU-2		
	AX 650-2		

NOTICE TO PERSONS RECEIVING THIS DRAWING
 THE TECHNICAL MATERIEL CORPORATION claims proprietary right in the material
 disclosed hereon. This drawing is issued in confidence for engineering information only
 and may not be reproduced or used to manufacture anything shown hereon without
 permission from THE TECHNICAL MATERIEL CORPORATION to the user. This drawing is
 loaned for mutual assistance and is subject to recall at any time.

FINAL	MECH. DES.	ELECT. DES.	CHECKED	DRAWN	DATE	DATE	DATE	DATE	DATE
					3/30/67	3/30/67	3/30/67	3/30/67	3/30/67

UNLESS OTHERWISE SPECIFIED DIMENSIONS ARE IN INCHES AND INCLUDE CHEMICALLY APPLIED OR PLATED FINISHES	DECIMALS	FRACTIONS
.X ± .05	1/64	
.XX ± .01		
.XXX ± .005		

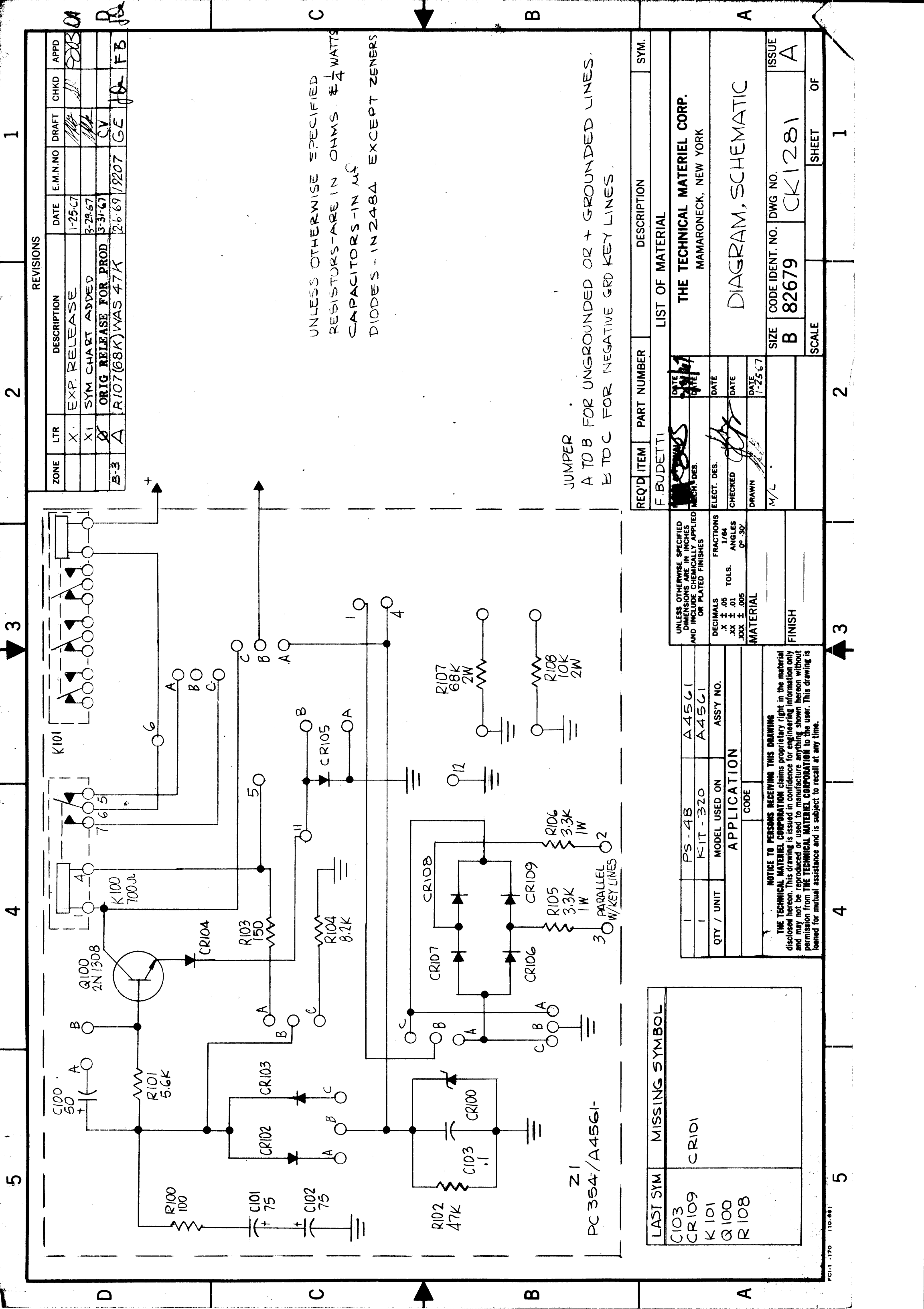
QTY / UNIT	MODEL USED ON	ASSY NO.
	APPLICATION	

REQUIREMENT	DESCRIPTION
LIST OF MATERIAL	THE TECHNICAL MATERIEL CORP. MAMARONECK, NEW YORK

SIZE	CODE IDENT. NO.	DWG NO.	ISSUE
B	82679	CK1276	B

SCALE	SHEET	OF
	1	1

DIAGRAM, SCHEMATIC



UNLESS OTHERWISE SPECIFIED
RESISTORS-ARE IN OHMS & 1/4 WATTS
CAPACITORS-IN MF
DIODES-IN 2A8A EXCEPT ZENERS

JUMPER
A TO B FOR UNGROUNDED OR + GROUNDED LINES.
B TO C FOR NEGATIVE GRD KEY LINES.

REQ'D ITEM	PART NUMBER	DESCRIPTION	SYM.
F. BUDETTI			
LIST OF MATERIAL			
THE TECHNICAL MATERIEL CORP. MAMARONECK, NEW YORK			
DIAGRAM, SCHEMATIC			
SIZE	CODE IDENT. NO.	DWG NO.	ISSUE
B	82679	CK1281	A
SCALE	SHEET	OF	
	1	1	

ZONE	LTR	DESCRIPTION	DATE	E.M.N. NO	DRAFT	CHKD	APPD
	X	EXP. RELEASE	1-25-67				
	X1	SYM CHART ADDED	3-29-67				
	A	ORIG RELEASE FOR PROD	3-31-67				
B-3	A	R107(68K) WAS 47K	2-6-69	19207	GE	DA	FB

UNLESS OTHERWISE SPECIFIED DIMENSIONS ARE IN INCHES AND INCLUDE CHEMICALLY APPLIED OR PLATED FINISHES	DECIMALS .X ± .05 .XX ± .01 .XXX ± .005	FRACTIONS 1/84	ANGLES 0°-30°
MATERIAL			
FINISH			
PS-4B	A4561		
KIT-320	A4561		
QTY / UNIT	MODEL USED ON	ASS'Y NO.	
	APPLICATION		
NOTICE TO PERSONS RECEIVING THIS DRAWING THE TECHNICAL MATERIEL CORPORATION claims proprietary right in the material disclosed hereon. This drawing is issued in confidence for engineering information only and may not be reproduced or used to manufacture anything shown hereon without permission from THE TECHNICAL MATERIEL CORPORATION to the user. This drawing is loaned for mutual assistance and is subject to recall at any time.			

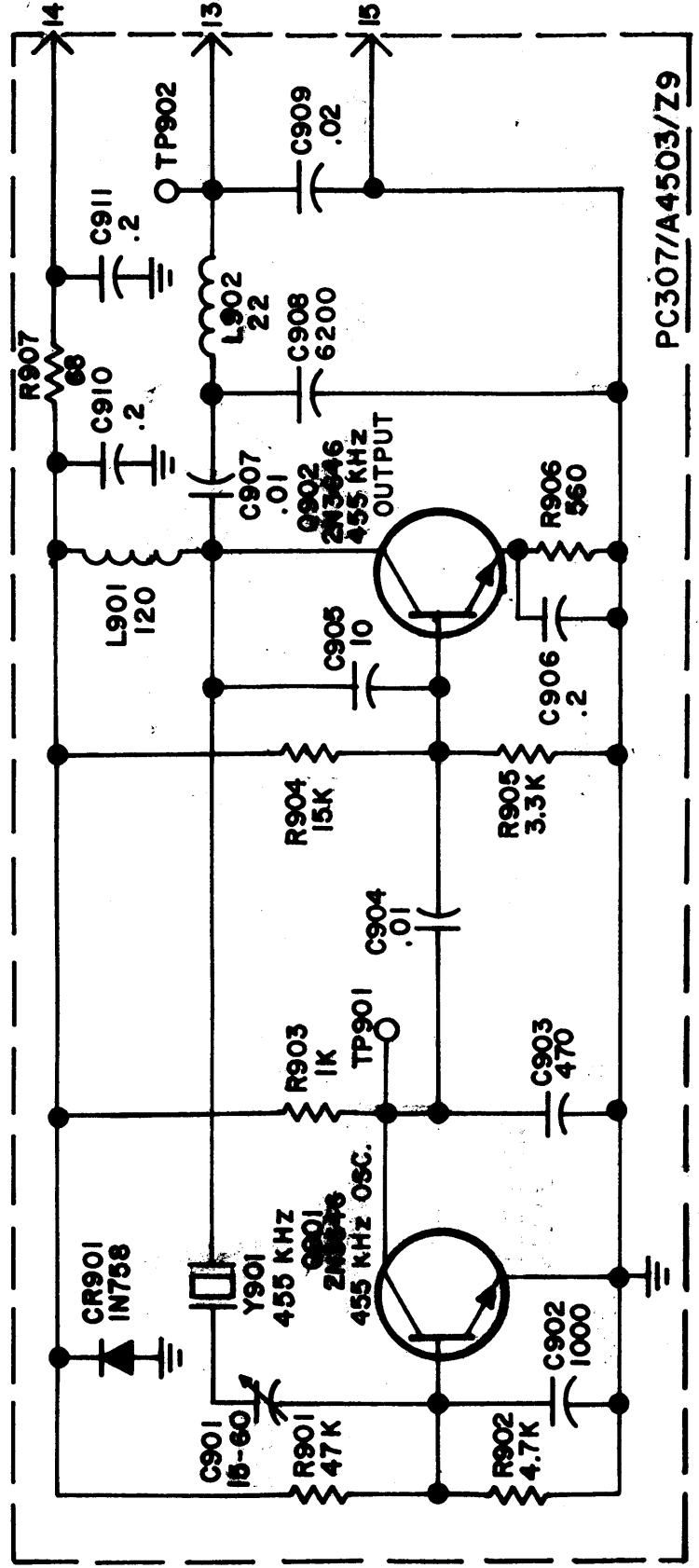
LAST SYM	MISSING SYMBOL
C103	CR101
CR109	
K101	
Q100	
R108	

Z1
PC 354/A4561-

REVISIONS

SYN	DESCRIPTION	DATE	E.M.N. NO.	DRAFT	CHKD	APPD
X	EXPERIMENTAL RELEASE	1-30-67				
X1	V107 DELETED. C902 CB WERE 10%. C909 WAS 7000 + 3%. R901 & 2 WERE FEEDBACK OSC. CAP NOTE - REVISED. A4503 & PC307 ADDED TO BD	2/28/67		LHU		
Ø	ORIG. RELEASE FOR PROD.	5/2/68		R.G.		

CK1282



LAST SYMBOLS
C911
CR901
L902
Q902
R907
TP902
Y901

- UNLESS OTHERWISE SPECIFIED**
- 1- ALL RESISTANCE VALUES ARE IN OHMS, 1/4 W.
 - 2- ALL CAPACITANCE VALUES: DECIMALS ARE IN MICROFARADS, WHOLE NUMBERS ARE IN MICROMICROFARADS.
 - 3- ALL INDUCTANCE VALUES ARE IN MICROHENRIES.

REF: PC307/A4503

REQ'D.	ITEM	PART NUMBER	DESCRIPTION	SYMBOL
LIST OF MATERIAL				
O · POSE				
MATERIAL				
FINISH				
UNLESS OTHERWISE SPECIFIED DIMENSIONS ARE IN INCHES AND INCLUDE CHEMICALLY APPLIED OR PLATED FINISHES				
DECIMALS ± .01				
FRACTIONS ± 1/64				
TOLERANCES ANGLES ± .01				
± 0 .30/				

THE TECHNICAL MATERIEL CORP.
MAMARONECK, NEW YORK

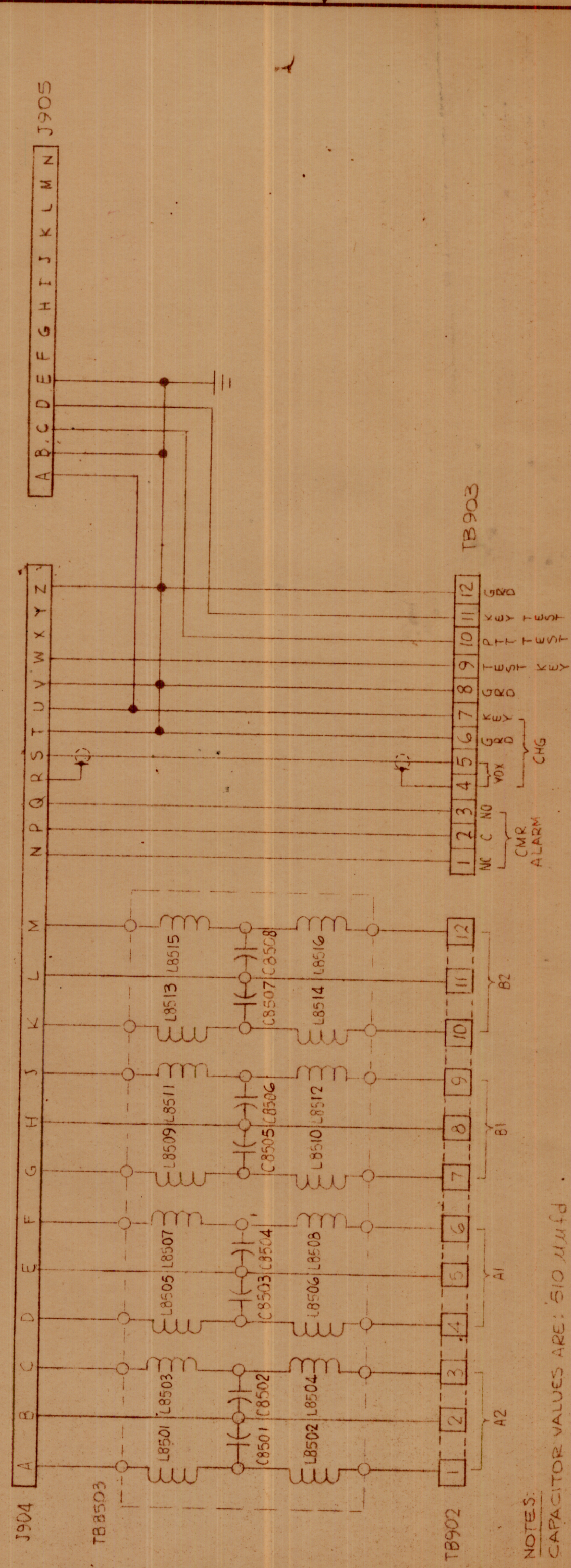
DIAGRAM, SCHEMATIC

QTY./UNIT	SCALE	MODEL USED ON	ASBY. NO.
1		VOX-7	A4503
THE CONTENTS OF THIS DRAWING ARE THE EXCLUSIVE PROPERTY OF THE TECHNICAL MATERIEL CORP. ITS UNAUTHORIZED USE OR REPRODUCTION IN WHOLE OR IN PART IS STRICTLY FORBIDDEN.			

NOTES

DATE	FINAL APPROVAL	DATE
1-30-67	H. AUSTIN	1-30-67
DATE	CHECKED	DATE
2/28/67	J.R.D.	2/28/67
DATE	ELECT. DES.	DATE
5/2/68	Enger	5/2/68
DATE	MECH. DES.	DATE

ZONE	LTR	DESCRIPTION	DATE	E.M.N.NO	DRAFT	CHKD	APPD
	X	EXP RELEASE	2-1-67				
	Ø	ORIG RELEASE FOR PROD	4-6-67	Ø			



NOTES:
 CAPACITOR VALUES ARE: 510 mufd
 COIL VALUES ARE: 10 mh

REQ'D ITEM	PART NUMBER	DESCRIPTION	SYM.
F. BUDETTI			
LIST OF MATERIAL			
THE TECHNICAL MATERIEL CORP. MAMARONECK, NEW YORK			
DIAGRAM, SCHEMATIC			
SIZE	CODE IDENT. NO.	DWG NO.	ISSUE
B	82679	CK 1286	Ø
SCALE	SHEET		OF
	1		1

UNLESS OTHERWISE SPECIFIED DIMENSIONS ARE IN INCHES AND INCLUDE CHEMICALLY APPLIED OR PLATED FINISHES	FRACTIONS	DECIMALS	TOLS.	ANGLES
	1/64	X ± .05		1/64
		.XX ± .01		0° 30'
		.XXX ± .005		
MATERIAL				
FINISH				

QTY / UNIT	MODEL USED ON	ASS'Y NO.
1	SBT-1KPA2	AF108
1	SBT-1KPA1	AF108
APPLICATION		
CODE		

NOTICE TO PERSONS RECEIVING THIS DRAWING
 THE TECHNICAL MATERIEL CORPORATION claims proprietary right in the material disclosed hereon. This drawing is issued in confidence for engineering information only and may not be reproduced or used to manufacture anything shown hereon without permission from THE TECHNICAL MATERIEL CORPORATION to the user. This drawing is loaned for mutual assistance and is subject to recall at any time.