

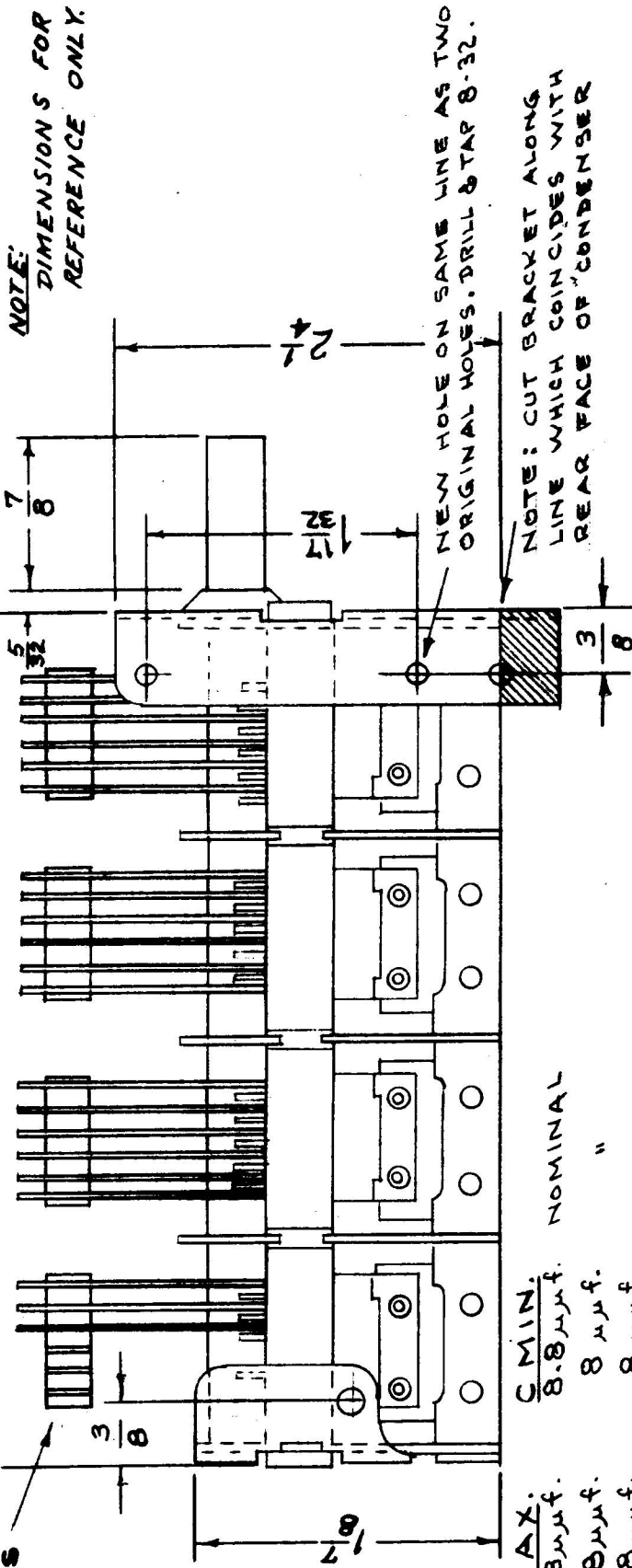
IF IT IS FOUND DESIRABLE TO CHANGE ANY TOLERANCE OR OTHER DETAIL SPECIFIED ON THIS DRAWING NOTIFY THE PURCHASER PROMPTLY.

MAXIMUM ALLOWABLE TOLERANCES HAVE BEEN DETERMINED AND DEVIATIONS WILL BE CAUSE FOR REJECTION. REMOVE ALL BURRS AND SHARP EDGES

REMOVE LAST THREE ROTOR PLATES

USED ON MODEL PROJECT NO. ASSY. NO. DATE  
VOX 101 A-599 6-7-57

C225-D C225-C C225-B C225-A



- C MAX. 228 μf. 8.8 μf. NOMINAL
- C225-A: 208 μf. 8 μf.
- C225-B: 208 μf. 8 μf.
- C225-C: 208 μf. 8 μf.
- C225-D: 106 μf. 6 μf.

ALL SPLIT PLATES TO BE LEFT FLAT (IN THE UNADJUSTED STATE)

REF: RADIO CONDENSER CORP. NO. 8/9090

REQ. ITEM	PART NO.	DESCRIPTION	SYMBOL
#		THE TECHNICAL MATERIEL CORP.	
#		MAMARONECK, NEW YORK	
MATERIAL	WEIGHT PER PC.	CAPACITOR, VARIABLE	
#	#	AIR TUNING	
TYPE & TEMPER		CDD 2-11-54	WSE
#		ELEC. DES. APP.	ATT
HEAT TREAT. SPEC.		ELEC. DES. APP.	MECH. DES. APP.
#		FINAL APPROVAL	WSE
FINISH & SPEC. NO.		SUPERCEDES	CB-100 C
		AEM 078-A	

ISSUE ITEM	CHANGED FROM	DATE	CN. NO.	DRAFTS CHECKER	ENG. APP.
1	DIMENSIONS ADDED	2-28-50	3	P.B.	J.A.V. WSE
	REDRAWN, NO CHANGE	2-11-54		C.D.D.	WSE

TOLERANCES  
DEC. DIM. ±  
FRAC. DIM. ±  
ANGULAR DIM. ±

DRILL, PUNCH, COMMERCIAL STOCK SIZES AND MANUFACTURERS TOLERANCES ARE NOT INCLUDED.