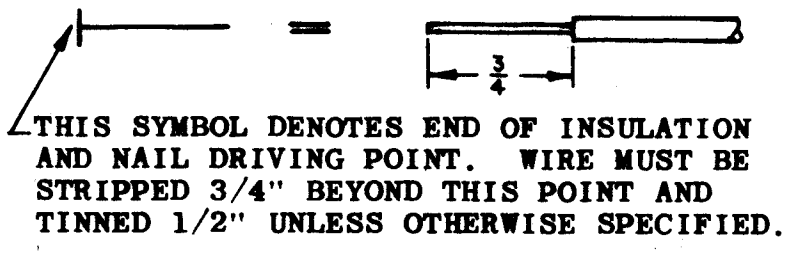
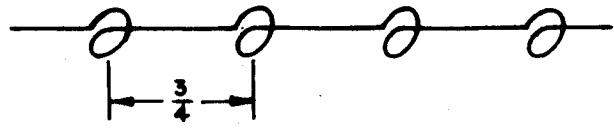


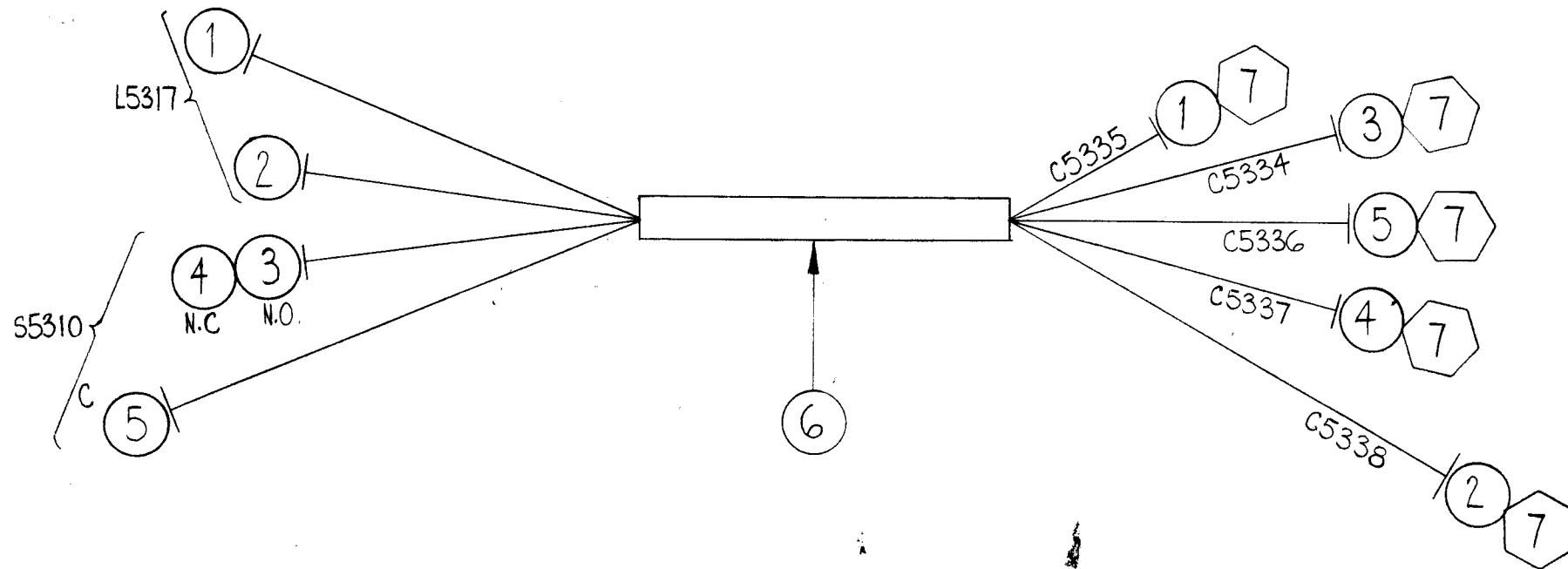
CA-817

THE CONTENTS OF THIS DRAWING ARE THE EXCLUSIVE PROPERTY OF THE TECHNICAL MATERIEL CORP. ITS UNAUTHORIZED USE OR REPRODUCTION IN WHOLE OR IN PART IS STRICTLY FORBIDDEN.

WIRES SHOULD BE PLACED IN CABLE IN NUMERICAL SEQUENCE AS THEY APPEAR IN ITEM COLUMN. SPACE LACING APPROXIMATELY 3/4" APART.



THIS SYMBOL DENOTES END OF INSULATION AND NAIL DRIVING POINT. WIRE MUST BE STRIPPED 3/4" BEYOND THIS POINT AND TINNED 1/2" UNLESS OTHERWISE SPECIFIED.



~SYMBOL DENOTES~
 ○ ITEM NOS.
 ⬡ LUGS

	9	CD-101-1-MW	CORD LACING	BLACK
	8	BS-100	SOLDER, SOFT	
	7	TE-156-32947	SOLDERLESS, TERMINAL	
0'-2"	6	PX-100-1-263	SLEEVING, INSULATION	BLACK
0'-7"	5	MWC18(16)B5	CABLE, INSULATED FIBERGLASS	GREEN
0'-6"	4	MWC20(7)B91		WH/BRN
0'-6"	3	MWC18(16)B90		WH/BLK
0'-7"	2	MWC20(7)B95		WH/GRN
0'-6"	1	MWC20(7)B96	CABLE, INSULATED FIBERGLASS	WH/BLUE

REQ. ITEM	PART NO.	F. BUDETTI	DESCRIPTION	SYMBOL
THE TECHNICAL MATERIEL CORP. MAMARONECK, NEW YORK				
CABLE ASS'Y, OUTPUT BANDSWITCH JUMPER				
MATERIAL				
		W.A. FRANCO	QA QCB	RDJ 4-7-64
TYPE & TEMPER	HEAT TREAT. SPEC.	DRAWN	CHECKED	FINAL APPROVAL
		RDJ	RDJ	CA-817
FINISH & SPEC. NO.		ELEC. DES. APP.	MECH. DES. APP.	○

○ ORIGINAL RELEASE FOR PRODUCTION	4/6/64					
SYM	DESCRIPTION	DATE	CH. NO.	DRAFTS	CHECKER	ENG. APP.
UNLESS OTHERWISE SPECIFIED: A		SCALE: FULL				
DIMENSIONS ARE IN INCHES		MAXIMUM ALLOWABLE TOLERANCES HAVE BEEN DETERMINED AND ANY DEVIATIONS WILL BE CAUSE FOR REJECTION.				
TOLERANCES ON FRACTIONS ± 1/64		DECIMALS ± .005				
		ANGLES ± 1/2°				
		REMOVE ALL BURRS AND SHARP EDGES				
1	GPT-200K	AS-124	A-2682	9-9-63		
REQ. PER UNIT	MODEL	SECTION	ASSY. NO.	DATE	USED ON	