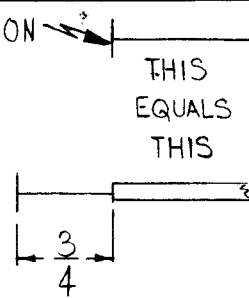
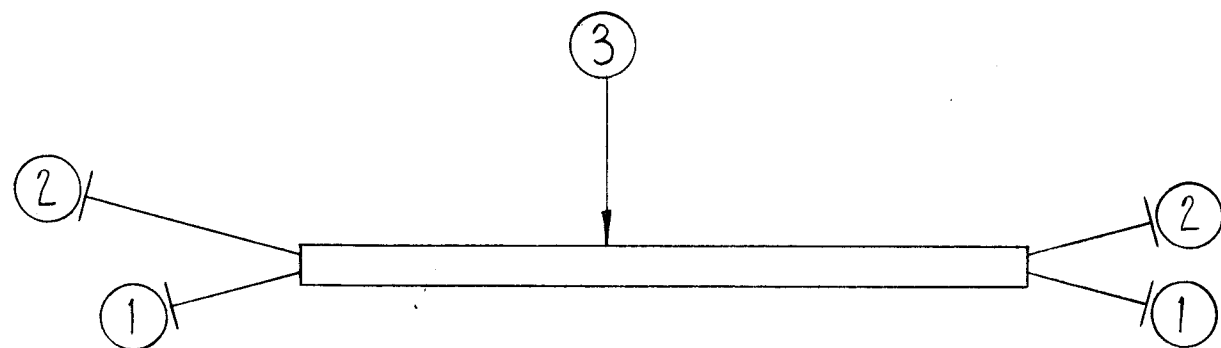
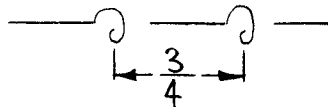


CA-784 0

THIS SYMBOL DENOTES END OF INSULATION & NAIL DRIVING POINT. WIRE MUST BE STRIPPED 3/4" BEYOND THIS POINT & TINNED 1/2" UNLESS OTHERWISE SPECIFIED.



WIRES SHOULD BE PLACED IN CABLE IN NUMERICAL SEQUENCE AS THEY APPEAR IN ITEM COLUMN. SPACE LACING APPROX. 3/4" APART.



~ SYMBOL NOTES ~

○ DENOTES ITEM NOS.

○	ORIGINAL RELEASE FOR PRODUCTION	4-24-64							
A	REDRAWN & REVISED								
SYM	DESCRIPTION	DATE	CH. NO.	DRAFTS	CHECKER	ENG. APP.			
UNLESS OTHERWISE SPECIFIED:		SCALE:							
DIMENSIONS ARE IN INCHES		MAXIMUM ALLOWABLE TOLERANCES HAVE BEEN DETERMINED AND ANY DEVIATIONS WILL BE CAUSE FOR REJECTION.							
DIMENSIONS ON		REMOVE ALL BURRS AND SHARP EDGES							
FRACTIONS ± 1/64									
DECIMALS ± .005									
ANGLES ± 1/2°									
CODE A									

1	GPT-200K	AR-148		5-6-63
1	GPT-200K	AR-139		5-6-63
REQ. PER UNIT	MODEL	SECTION	ASS'Y. NO.	DATE
USED ON				

5	BS-100	SOLDER, SOFT	
4	CD-101-1-MW	CORD LACING	BLACK
3	PX-100-1-294	SLEEVING, INSULATION	BLACK
2	MWC 18(16)B92	CABLE, INSULATED, FIBERGLASS	WH/RED
1	MWC 18(16)B96	CABLE, INSULATED, FIBERGLASS	WH/BLUE

REQ. ITEM	PART NO.	F. BUDETTI	DESCRIPTION	SYMBOL
		THE TECHNICAL MATERIEL CORP. MAMARONECK, NEW YORK		
STOCK SIZE		CABLE ASSY., GRID OVLD RELAY B-		
MATERIAL		(RELAY A & B)		
		W.A. FRANCO	<i>W.A.</i>	<i>RAC</i>
TYPE & TEMPER	HEAT TREAT. SPEC.	DRAWN	CHECKER	FINAL APPROVAL
		<i>W.B.B.</i>	<i>S.D.</i>	CA-784
FINISH & SPEC. NO.		ELEC. DES. APP.	MECH. DES. APP.	0