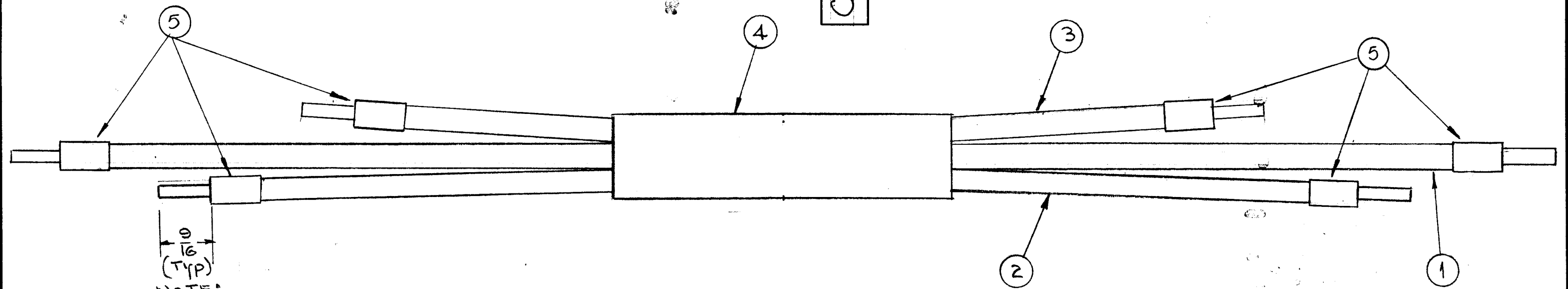


CA 683 B

REVISIONS

SYM	DESCRIPTION	DATE	E.M.N. NO.	DRAFT	CHKD	APPD
A	ONBUILDUP ITEM # 4 WAS PX-100-1-750	9-20-63	9982	HA	SRG	[Signature]
B	ITEM 5 ADDED	9-17-64	12386	SRG	[Signature]	[Signature]



NOTE:  
STRIP & TIN ALL  
CABLE ENDS AS SHOWN

NOTICE TO PERSONS RECEIVING THIS DRAWING

THE TECHNICAL MATERIEL CORPORATION claims proprietary right in the material disclosed hereon. This drawing is issued in confidence for engineering information only and may not be reproduced or used to manufacture anything shown hereon without permission from THE TECHNICAL MATERIEL CORPORATION to the user. This drawing is loaned for mutual assistance and is subject to recall at any time.

Property of:  
THE TECHNICAL MATERIEL CORPORATION  
MAMARONECK, NEW YORK

REQ'D.	ITEM	PART NUMBER	DESCRIPTION	SYMBOL
3"	5	PX 830-4-1	SLEEVING, SHRINK 1/2" LONG	
3 1/2	4	PX 100-1-625	SLEEVING, INSULATION	
10	3	HWC6(127)B9	CABLE, INSULATED	
13	2	HWC6(127)B92	"	
16	1	HWC6(127)B90	"	

BUDETTI		LIST OF MATERIAL	
MATERIAL		THE TECHNICAL MATERIEL CORP. MAMARONECK, NEW YORK	
FINISH		TITLE CABLE ASSEMBLY, ELECTRICAL CONTACTOR JUMPER	
UNLESS OTHERWISE SPECIFIED DIMENSIONS ARE IN INCHES AND INCLUDE CHEMICALLY APPLIED OR PLATED FINISHES		DRAWN GDL	DATE 3-1-62
DECIMALS .X ± .05 .XX ± .01 .XXX ± .005		CHECKED [Signature]	DATE 4-3-62
FRACTIONS ± 1/64 ANGLES ± 0° 30'		ELECT. DES. [Signature]	DATE
TOLERANCES		MECH. DES.	DATE
		FINAL APPROVAL [Signature]	
		DATE	
		CA 683 B	
		SHEET	
		REV. LTR.	

1	GPT-10K	3-1-62
Q'TY./UNIT	MODEL USED ON	ASS'Y. NO.
SCALE	CODE	

NOTES

THE CONTENTS OF THIS DRAWING ARE THE EXCLUSIVE PROPERTY OF THE TECHNICAL MATERIEL CORP. ITS UNAUTHORIZED USE OR REPRODUCTION IN WHOLE OR IN PART IS STRICTLY FORBIDDEN.