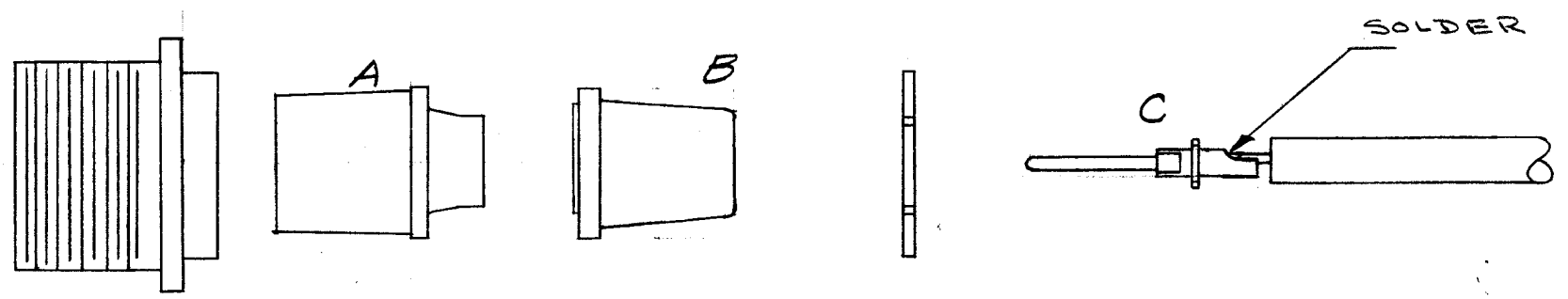
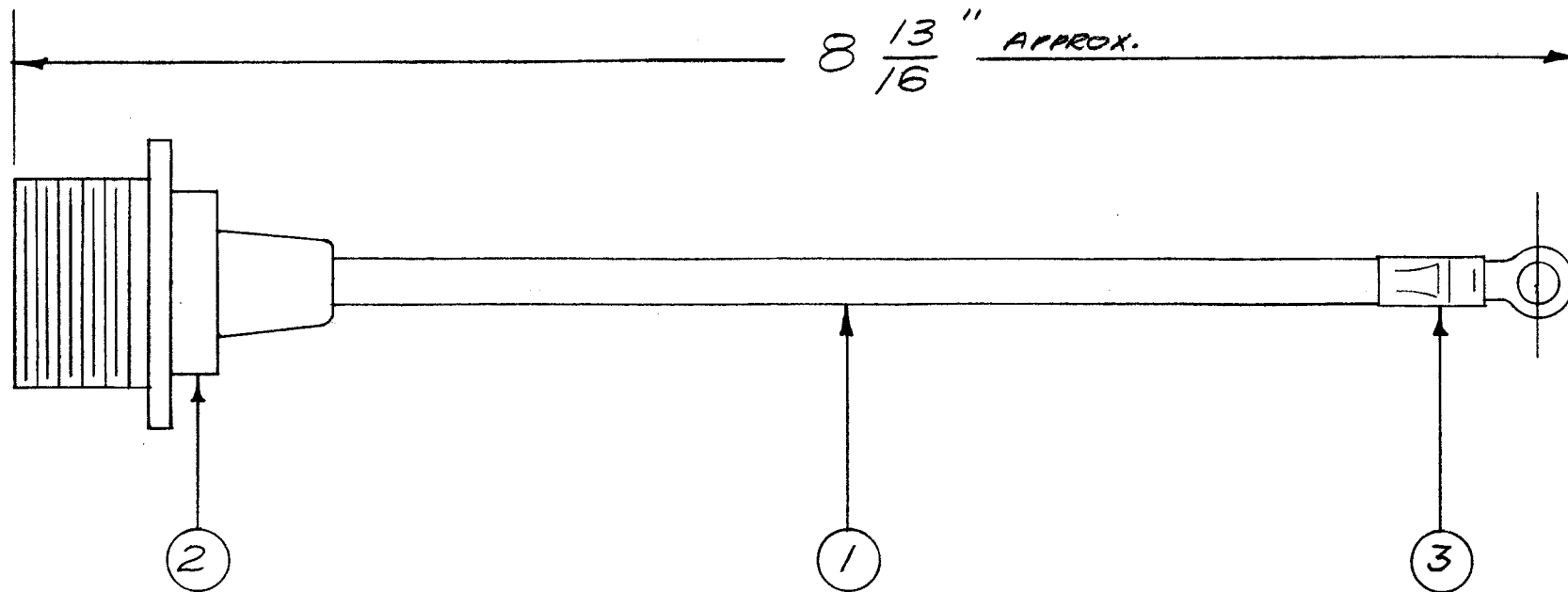


CA-321 B



WIRING DETAIL

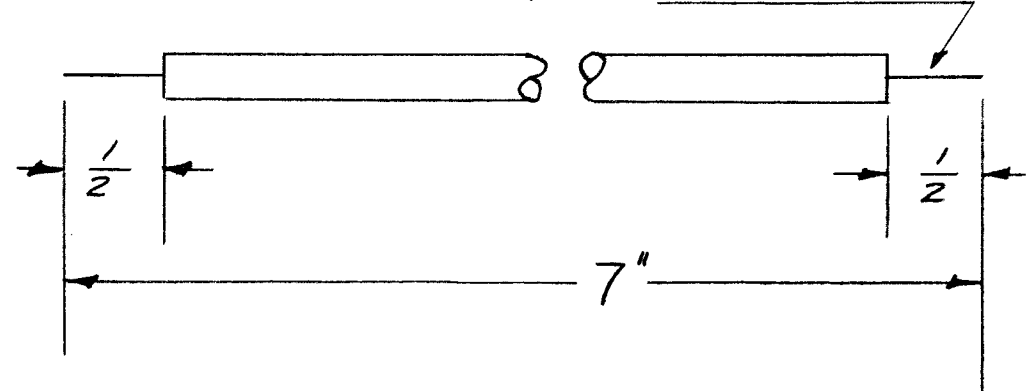
NOTE THAT AFTER PIN C HAS BEEN INSERTED IN SECTIONS A & B, IT MUST BE TURNED TO LOCK INTO SECTION A.

NOTICE TO PERSONS RECEIVING THIS DRAWING

THE TECHNICAL MATERIEL CORPORATION claims proprietary right in the material disclosed hereon. This drawing is issued in confidence for engineering information only and may not be reproduced or used to manufacture anything shown hereon without permission from THE TECHNICAL MATERIEL CORPORATION to the user. This drawing is loaned for mutual assistance and is subject to recall at any time.

Property of:  
THE TECHNICAL MATERIEL CORPORATION  
MAMARONECK, NEW YORK

STRIP & TIN BOTH ENDS



REQ. ITEM	PART NO.	DESCRIPTION	SYMBOL
X 4	BS-100	SOLDER, SOFT	
1 3	TE-155-34171	TERMINAL, SOLDERLESS	
1 2	MS3102A-1B-16P	CONNECTOR	J303
6 1/2 1	W1-126-1	WIRE, SINGLE COND.	RED
//		THE TECHNICAL MATERIEL CORP. MAMARONECK, NEW YORK	
//		LEAD, ELECTRICAL	
//		RTF - F/P METER BOX	
//		46 11-26-56	JAWD
//		H. J. J.	
//		CA-321 B	

ISSUE	ITEM	CHANGED FROM	DATE	CH. NO.	DRAFTS	CHECKER	ENG. APP.
B	1	DIM. 7" WAS 6 1/2"	8.26.64	12172	WB	JAWD	JAWD
A	1	ITEM 3 WAS TE-155-34170	5957	1	SC.	JAWD	JAWD

TOLERANCES		SCALE:	
DEC. DIM. ±		MAXIMUM ALLOWABLE TOLERANCES HAVE BEEN DETERMINED AND ANY DEVIATIONS WILL BE CAUSE FOR REJECTION. REMOVE ALL BURRS AND SHARP EDGES	
FRAC. DIM. ± 1/32			
ANGULAR DIM. ±			

REQ. PER UNIT	MODEL	PROJECT NO.	ASS'Y. NO.	DATE
1	RTF-2	F/P		11-19-58
1	RTF			11-26-56

USED ON