

5

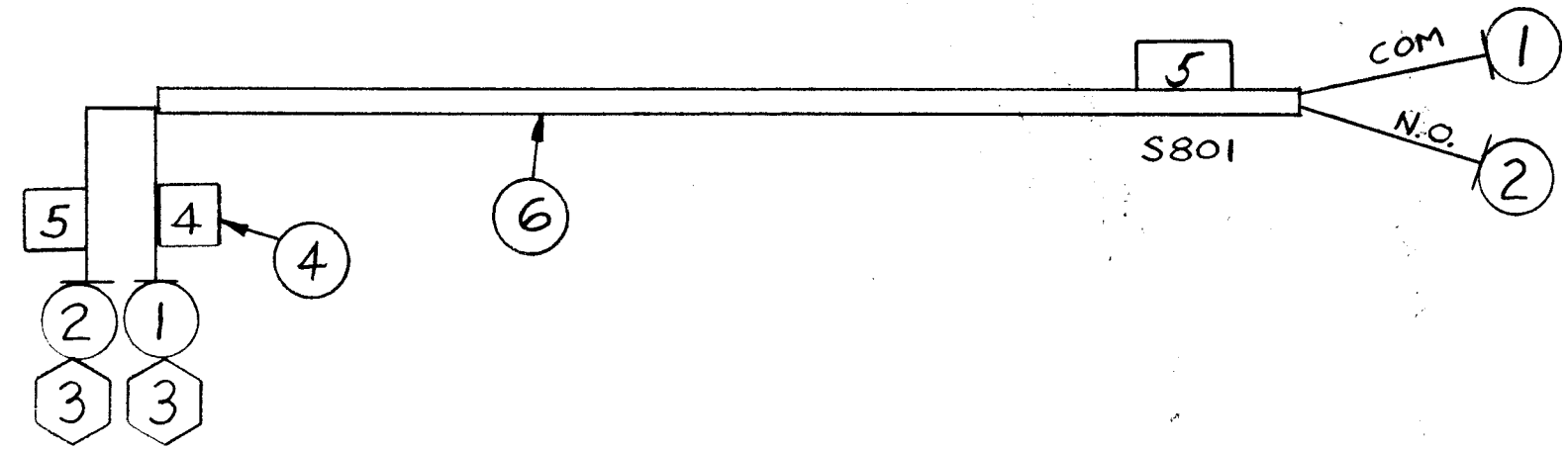
4

3

2

1

REVISIONS						
ZONE	LTR	DESCRIPTION	DATE	E.M.N.NO	DRAFT	CHKD APPD
	Ø	ORIG RELEASE FOR PROD	4/27/70		CV	
	A	IT. Z WENT TO N.C.	1 FEB 73	21004	<i>[Signature]</i>	<i>[Signature]</i>



REQ'D	ITEM	PART NUMBER	DESCRIPTION	SYM.
	8	CD101-1M W	CORD, NYLON, LACING	
	7	BS100	SOLDER, TIN ALLOY	
	6	PX100-1-166	INS, SLVG, BLK	
1	5	LA107-11-SB01	SLV, MKR, CBL	
2	4	LA101	BAND, MKR, CABLE	
2	3	TE120-2	TERM, LUG, SPADE	
	2	MWC20(7)U90	B801 TERM5 SB01-N.O.	
	1	MWC20(7)U9	B801 TERM4 SB01-COM	

BUDETT 1 LIST OF MATERIAL

FINAL APPROVAL <i>[Signature]</i>	DATE 28 APR 70	THE TECHNICAL MATERIEL CORP. MAMARONECK, NEW YORK <h1>CABLE, AIR SWITCH</h1>			
MECH. DES.	DATE				
ELECT. DES. <i>[Signature]</i>	DATE 28 APR 70				
CHECKED	DATE				
DRAWN <i>[Signature]</i>	DATE 9 Feb 70	SIZE B	CODE IDENT. NO. 82679	DWG NO. CA1565	ISSUE A
MATERIAL		SCALE		SHEET OF	
FINISH					

1	PALA-10K	AP148
QTY / UNIT	MODEL USED ON	ASS'Y NO.
APPLICATION		
CODE		
<p>NOTICE TO PERSONS RECEIVING THIS DRAWING THE TECHNICAL MATERIEL CORPORATION claims proprietary right in the material disclosed hereon. This drawing is issued in confidence for engineering information only and may not be reproduced or used to manufacture anything shown hereon without permission from THE TECHNICAL MATERIEL CORPORATION to the user. This drawing is loaned for mutual assistance and is subject to recall at any time.</p>		

UNLESS OTHERWISE SPECIFIED DIMENSIONS ARE IN INCHES AND INCLUDE CHEMICALLY APPLIED OR PLATED FINISHES

DECIMALS .X ± .05 .XX ± .01 .XXX ± .005

FRACTIONS 1/64 ANGLES 0° -30'

TOLS.