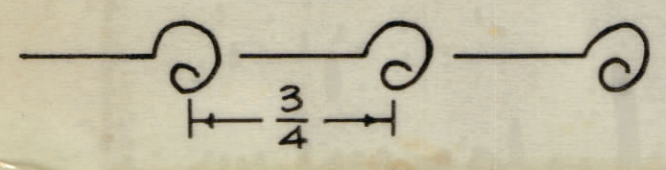


UNLESS OTHERWISE SPECIFIED WIRES SHOULD BE PLACED IN CABLE IN NUMERICAL SEQ. AS THEY APPEAR IN ITEM COLUMN BY CATEGORY.

1. ALL R.F. CABLES
2. ALL SHIELDED CABLES
3. ALL OTHERS
SPACE LACING APPROXIMATELY 3/4" APART.

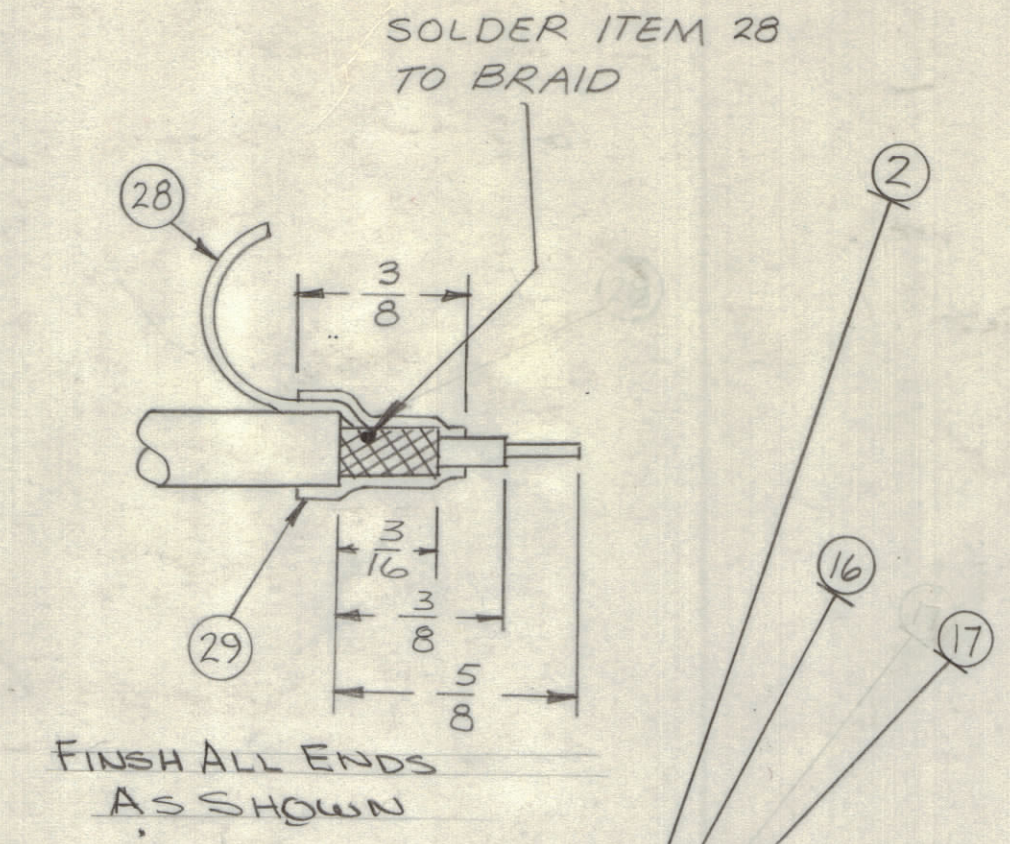
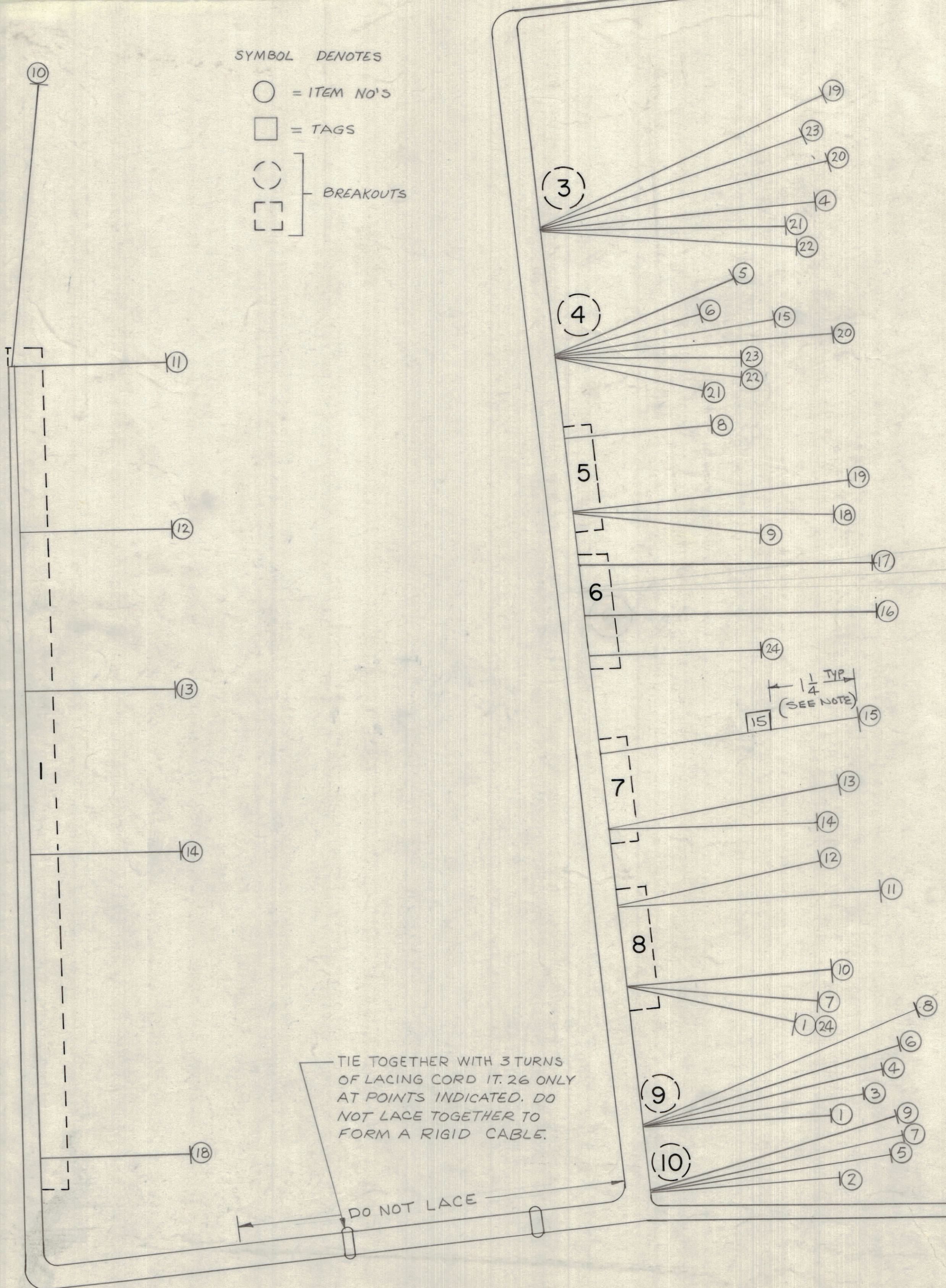


THIS SYMBOL DENOTES END OF INSULATION AND NAIL DRIVING POINT. WIRE MUST BE STRIPPED 3/4" BEYOND THIS POINT AND TINNED 1/2" UNLESS OTHERWISE SPECIFIED.

SYMBOL DENOTES

- = ITEM NO'S
- = TAGS
- ⊖ (circle with dash) = BREAKOUTS
- ⊞ (square with dash) = BREAKOUTS

REVISIONS						
ZONE	LTR	DESCRIPTION	DATE	E.M.N.NO	DRAFT	CHKD APPD
	X	EXP. RELEASE	9.27.68	11	H.S.	
		ORIG. RELEASE FOR PROD.	10.6.68		R.G.	



LABEL NOTE
ATTACH LABELS (LA101-) TO BOTH ENDS OF EACH WIRE (1/4 FROM END, TYP).

TIE TOGETHER WITH 3 TURNS OF LACING CORD IT. 26 ONLY AT POINTS INDICATED. DO NOT LACE TOGETHER TO FORM A RIGID CABLE.

DO NOT LACE

1	VOXC)-7	
QTY / UNIT	MODEL USED ON	ASS'Y NO.
APPLICATION		
CODE		

NOTICE TO PERSONS RECEIVING THIS DRAWING
THE TECHNICAL MATERIEL CORPORATION claims proprietary right in the material disclosed herein. This drawing is issued in confidence for engineering information only and may not be reproduced or used to manufacture anything shown hereon without permission from THE TECHNICAL MATERIEL CORPORATION to the user. This drawing is loaned for mutual assistance and is subject to recall at any time.

UNLESS OTHERWISE SPECIFIED DIMENSIONS ARE IN INCHES AND INCLUDE CHEMICALLY APPLIED OR PLATED FINISHES		FINAL APPROVAL <i>[Signature]</i>	DATE
TOLERANCES ON		ELECT. DES. <i>[Signature]</i>	DATE
DECIMALS .X ± .05 .XX ± .01 .XXX ± .005	FRACTIONS ± 1/64 ANGLES ± 0° -30'	CHECKED <i>[Signature]</i>	DATE 10/4/68
MATERIAL		DRAWN <i>[Signature]</i>	DATE 9.26.68
FINISH			

QTY. REQ.	ITEM	PART NO.	DESCRIPTION	SYMBOL
LIST OF MATERIAL				
THE TECHNICAL MATERIEL CORP. MAMARONECK, NEW YORK				
WIRING HARNESS BRANCHED				
SIZE	CODE IDENT. NO.	DWG NO.	ISSUE	
D	82679	CA 1438	Ø	
SCALE				SHEET OF

REQ	ITEM	PART NUMBER	BREAKOUT		DESTINATION OR DESCRIPTION	
			FROM	TO	FROM	TO
1		RG174/U	8	9	J101 SHIELD	PIN 3 B
2			10	11	J101 SHIELD	A
3			2	9	J101 SHIELD	B
4			3	9	J101 SHIELD	5
5			4	10	J101 SHIELD	E
6			4	9	J101 SHIELD	8
7			8	10	J101 SHIELD	J
8			5	9	J101 SHIELD	L
9			5	10	J101 SHIELD	K
10			1	8	S101A FRONT SHIELD	11
11			1	8	S102A FRONT SHIELD	10
12			1	8	S103A FRONT SHIELD	N
13			1	7	S104A FRONT SHIELD	K
14			1	7	S105A FRONT SHIELD	1
15			4	7	J106 SHIELD	13
16			6	11	J117 SHIELD	12
17			6	11	J118 SHIELD	GRD
18			1	5	J110 SHIELD	GRD
19			3	5	J110 SHIELD	N
20			3	4	J111 SHIELD	S
21			3	4	J111 SHIELD	R
22			3	4	J111 SHIELD	15
23			3	4	J111 SHIELD	14
24		RG174/U	6	8	J104 SHIELD	15
25		LA101			TABLE #1 THRU #24	1
26		CD101-1MW			CORD, NYLON LACING	GRD
						GRD
						R
						S
						N
						12
						10
						12
						11
						13
						L
						H
						B
						PIN A

