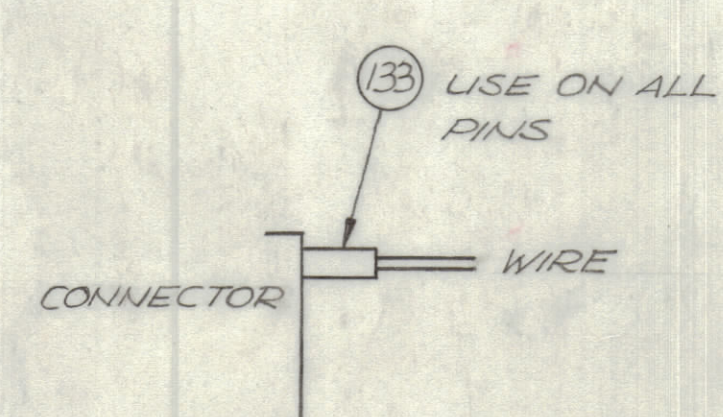
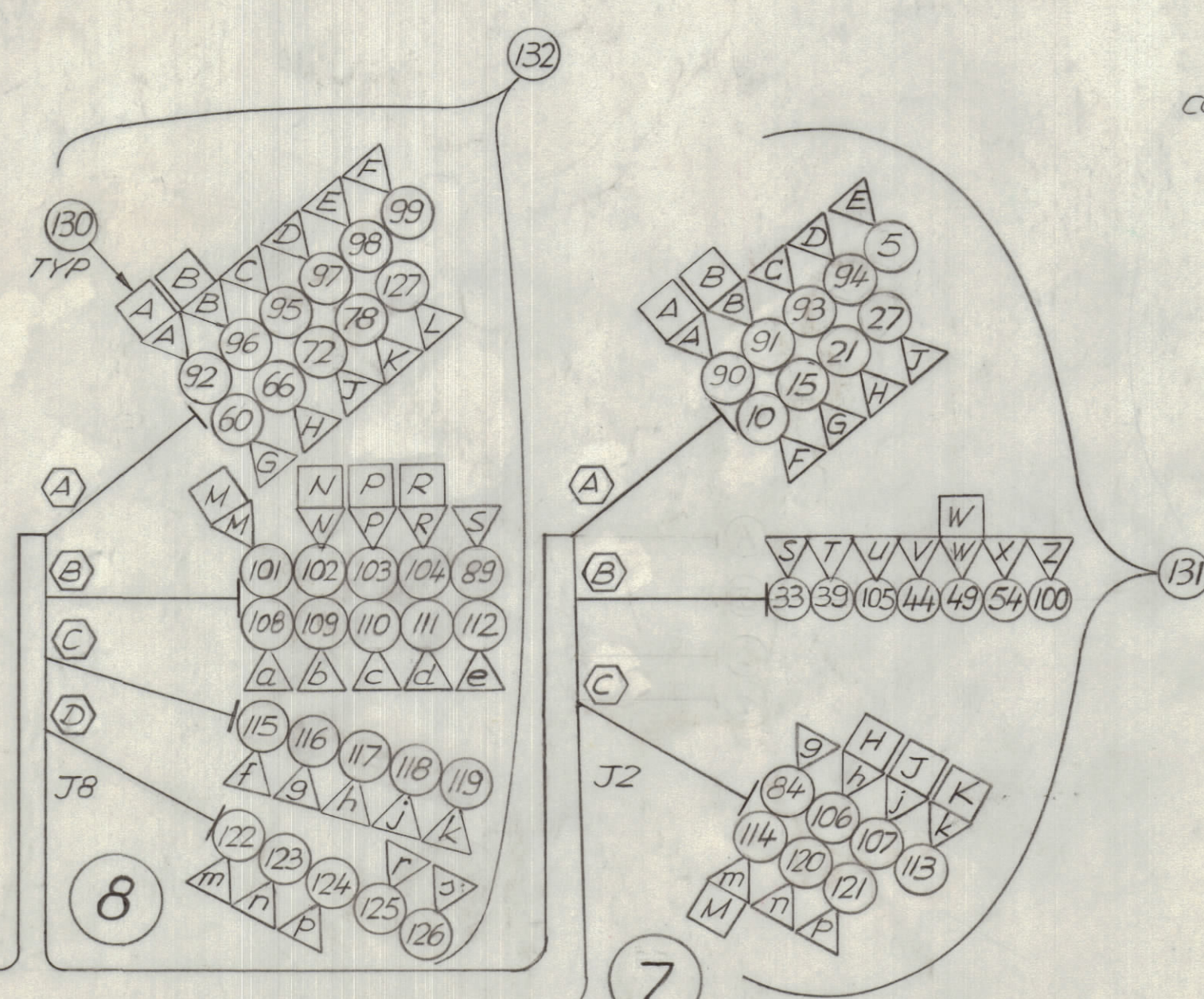
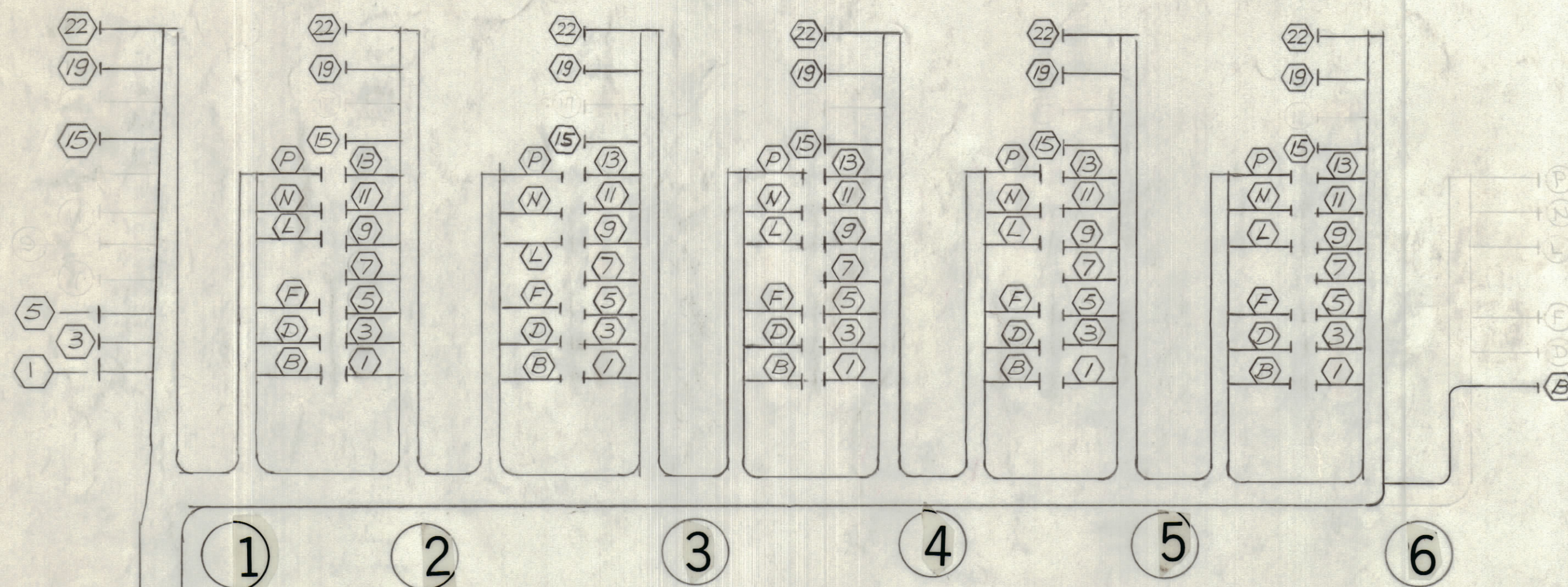


REVISIONS						
ZONE	LTR	DESCRIPTION	DATE	E.M.N.NO	DRAFT	CHKD APPD
X		EXP RELEASE	1-30-65			
XI		REV. & CLARIFIED	12/65			
Ø		ORIGINAL RELEASE FOR PRODUCTION	1-28-67		R.G.	



- SYMBOL DENOTES
- ITEM NO'S
 - ⬡ DETAILED BREAKOUT LOCATIONS
 - } STATION BREAKOUTS
 - MARKERS
 - △ PIN NO'S

THIS SYMBOL DENOTES END OF INSULATION AND NAIL DRIVING POINT. WIRE MUST BE STRIPPED 3/4" BEYOND THIS POINT AND TINNED 1/2" UNLESS OTHERWISE SPECIFIED.

UNLESS OTHERWISE SPECIFIED WIRES SHOULD BE PLACED IN CABLE IN NUMERICAL SEQUENCE AS THEY APPEAR IN ITEM COLUMN BY CATEGORY.

- ALL R.F. CABLES
- ALL SHIELDED CABLES
- ALL OTHERS

SPACE LACING APPROXIMATELY 3/4" APART.

1	HFSR-4	BMA-236
QTY / UNIT	MODEL USED ON	ASS'Y NO.
APPLICATION		
CODE	401-451	
NOTICE TO PERSONS RECEIVING THIS DRAWING		
THE TECHNICAL MATERIEL CORPORATION claims proprietary right in the material disclosed hereon. This drawing is issued in confidence for engineering information only and may not be reproduced or used to manufacture anything shown hereon without permission from THE TECHNICAL MATERIEL CORPORATION to the user. This drawing is loaned for mutual assistance and is subject to recall at any time.		

QTY. REQ.	ITEM	PART NO.	DESCRIPTION	SYMBOL
LIST OF MATERIAL				
FINAL APPROVAL			HOGAN	
MECH. DES.			DATE	
ELECT. DES.			DATE 28 JAN 69	
CHECKED			DATE 1-30-68	
DRAWN			DATE 1-30-68	
MATERIAL			SIZE CODE IDENT. NO. DWG. NO.	
FINISH			D 82679 CA1417	
SCALE 1:1			SHEET OF	

THE TECHNICAL MATERIEL CORP.
MAMARONECK, NEW YORK

WIRING HARNESS, BRANCHED
(AUTOMATION) CABLES

B CA1417 Ø

A

REQ ITEM	PART NUMBER	BREAKOUT		DESTINATION OR DESCRIPTION	
		FROM	TO	FROM	TO
1	LWC26(7)U7	6-9	5-9	XA14 PIN 9	XA15 PIN 9
2		5-9	4-9	XA15 PIN 9	XA16 PIN 9
3		4-9	3-9	XA16 PIN 9	XA17 PIN 9
4		3-9	2-9	XA17 PIN 9	XA18 PIN 9
5		2-9	7-A	XA18 PIN 9	J2 PIN E
6		6-7	5-7	XA14 PIN 8	XA15 PIN 8
7		5-7	4-7	XA15 PIN 8	XA16 PIN 8
8		4-7	3-7	XA16 PIN 8	XA17 PIN 8
9		3-7	2-7	XA17 PIN 8	XA18 PIN 8
10		2-7	7-A	XA18 PIN 8	J2 PIN F
11		6-7	5-7	XA14 PIN 7	XA15 PIN 7
12		5-7	4-7	XA15 PIN 7	XA16 PIN 7
13		4-7	3-7	XA16 PIN 7	XA17 PIN 7
14		3-7	2-7	XA17 PIN 7	XA18 PIN 7
15		2-7	7-A	XA18 PIN 7	J2 PIN G
16		6-5	5-5	XA14 PIN 6	XA15 PIN 6
17		5-5	4-5	XA15 PIN 6	XA16 PIN 6
18		4-5	3-5	XA16 PIN 6	XA17 PIN 6
19		3-5	2-5	XA17 PIN 6	XA18 PIN 6
20		2-5	1-5	XA18 PIN 6	XA19 PIN 6
21		1-5	7-A	XA19 PIN 6	J2 PIN H
22		6-5	5-5	XA14 PIN 5	XA15 PIN 5
23		5-5	4-5	XA15 PIN 5	XA16 PIN 5
24		4-5	3-5	XA16 PIN 5	XA17 PIN 5
25		3-5	2-5	XA17 PIN 5	XA18 PIN 5
26		2-5	1-5	XA18 PIN 5	XA19 PIN 5
27		1-5	7-A	XA19 PIN 5	J2 PIN J
28		6-3	5-3	XA14 PIN 4	XA15 PIN 4
29		5-3	4-3	XA15 PIN 4	XA16 PIN 4
30		4-3	3-3	XA16 PIN 4	XA17 PIN 4
31		3-3	2-3	XA17 PIN 4	XA18 PIN 4
32		2-3	1-3	XA18 PIN 4	XA19 PIN 4
33		1-3	7-B	XA19 PIN 4	J2 PIN S
34		6-3	5-3	XA14 PIN 3	XA15 PIN 3
35		5-3	4-3	XA15 PIN 3	XA16 PIN 3
36		4-3	3-3	XA16 PIN 3	XA17 PIN 3
37		3-3	2-3	XA17 PIN 3	XA18 PIN 3
38		2-3	1-3	XA18 PIN 3	XA19 PIN 3
39	LWC26(7)U1	1-3	7-B	XA19 PIN 3	J2 PIN T

REQ	ITEM	PART NUMBER	BREAKOUT		DESTINATION OR DESCRIPTION	
			FROM	TO	FROM	TO
40		LWC26(7)U8	6-11	5-11	XA14 PIN11	XA15 PIN11
41		8	5-11	4-11	XA15 PIN11	XA16 PIN11
42		8	4-11	3-11	XA16 PIN11	XA17 PIN11
43		8	3-11	2-11	XA17 PIN11	XA18 PIN11
44		8	2-11	7-B	XA18 PIN11	J2 PIN V
45		98	6-13	5-13	XA14 PIN13	XA15 PIN13
46		98	5-13	4-13	XA15 PIN13	XA16 PIN13
47		98	4-13	3-13	XA16 PIN13	XA17 PIN13
48		98	3-13	2-13	XA17 PIN13	XA18 PIN13
49		98	2-13	7-B	XA18 PIN13	J2 PIN W
50		9	6-13	5-13	XA14 PIN12	XA15 PIN12
51		9	5-13	4-13	XA15 PIN12	XA16 PIN12
52		9	4-13	3-13	XA16 PIN12	XA17 PIN12
53		9	3-13	2-13	XA17 PIN12	XA18 PIN12
54		9	2-13	7-B	XA18 PIN12	J2 PIN X
55		93	6-15	5-15	XA14 PIN16	XA15 PIN16
56		93	5-15	4-15	XA15 PIN16	XA16 PIN16
57		93	4-15	3-15	XA16 PIN16	XA17 PIN16
58		93	3-15	2-15	XA17 PIN16	XA18 PIN16
59		93	2-15	1-15	XA18 PIN16	XA19 PIN16
60		93	1-15	8-A	XA19 PIN16	J8 PIN G
61		94	6-19	5-19	XA14 PIN18	XA15 PIN18
62		94	5-19	4-19	XA15 PIN18	XA16 PIN18
63		94	4-19	3-19	XA16 PIN18	XA17 PIN18
64		94	3-19	2-19	XA17 PIN18	XA18 PIN18
65		94	2-19	1-19	XA18 PIN18	XA19 PIN18
66		94	1-19	8-A	XA19 PIN18	J8 PIN H
67		95	6-19	5-19	XA14 PIN19	XA15 PIN19
68		95	5-19	4-19	XA15 PIN19	XA16 PIN19
69		95	4-19	3-19	XA16 PIN19	XA17 PIN19
70		95	3-19	2-19	XA17 PIN19	XA18 PIN19
71		95	2-19	1-19	XA18 PIN19	XA19 PIN19
72		95	1-19	8-A	XA19 PIN19	J8 PIN J
73		92	6-15	5-15	XA14 PIN15	XA15 PIN15
74		92	5-15	4-15	XA15 PIN15	XA16 PIN15
75		92	4-15	3-15	XA16 PIN15	XA17 PIN15
76		92	3-15	2-15	XA17 PIN15	XA18 PIN15
77		92	2-15	1-15	XA18 PIN15	XA19 PIN15
78		LWC26(7)U92	1-15	8-A	XA19 PIN15	J8 PIN K

REQ	ITEM	PART NUMBER	BREAKOUT		DESTINATION OR DESCRIPTION	
			FROM	TO	FROM	TO
	79	MWC24(7)9	6-22	5-22	XA14 PIN 22	XA15 PIN 22
	80	↕	5-22	4-22	XA15 PIN 22	XA16 PIN 22
	81	↕	4-22	3-22	XA16 PIN 22	XA17 PIN 22
	82	↕	3-22	2-22	XA17 PIN 22	XA18 PIN 22
	83	↕	2-22	1-22	XA18 PIN 22	XA19 PIN 22
	84	MWC24(7)9	1-22	7-C	XA19 PIN 22	J2 PIN 9
	85	LWC26(7)96	5-D	4-D	XA15 PIND	XA16 PIND
	86	↕	4-D	3-D	XA16 PIND	XA17 PIND
	87	↕	3-D	2-D	XA17 PIND	XA18 PIND
	88	↕	2-D	1-D	XA18 PIND	XA19 PIND
	89	↕	1-D	8-B	XA19 PIND	J8 PINS
	90	LWC26(7)U0	6-1	7-A	XA14 PIN 1	J2 PIN A
	91	MWC24(7)98	6-22	7-A	XA14 PIN 21	J2 PIN B
	92	LWC26(7)U90	6-B	8-A	XA14 PIN B	J8 PIN A
	93	LWC26(7)U0	5-1	7-A	XA15 PIN 1	J2 PIN C
	94	MWC24(7)U98	5-22	7-A	XA15 PIN 21	J2 PIN D
	95	LWC26(7)U2	5-P	8-A	XA15 PIN P	J8 PIN C
	96	↕	5-B	8-A	XA15 PIN B	J8 PIN B
	97	↕	5-L	8-A	XA15 PIN L	J8 PIN D
	98	↕	5-F	8-A	XA15 PIN F	J8 PIN E
	99	LWC26(7)U97	5-N	8-A	XA15 PIN N	J8 PIN F
	100	MWC24(7)U98	4-22	7-B	XA16 PIN 21	J2 PIN Z
	101	LWC26(7)U2	4-P	8-B	XA16 PIN P	J8 PIN M
	102	↕	4-L	8-B	XA16 PIN L	J8 PIN N
	103	↕	4-F	8-B	XA16 PIN F	J8 PIN P
	104	↕	4-N	8-B	XA16 PIN N	J8 PIN R
	105	↕	4-1	7-B	XA16 PIN 1	J2 PIN U
	106	LWC26(7)U0	3-1	7-C	XA17 PIN 1	J2 PIN h
	107	MWC24(7)U98	3-22	7-C	XA17 PIN 21	J2 PIN j
	108	LWC26(7)U90	3-B	8-B	XA17 PIN B	J8 PIN a
	109	↕	3-P	8-B	XA17 PIN P	J8 PIN b
	110	↕	3-L	8-B	XA17 PIN L	J8 PIN c
	111	↕	3-F	8-B	XA17 PIN F	J8 PIN d
	112	↕	3-N	8-B	XA17 PIN N	J8 PIN e
	113	LWC26(7)U0	2-1	7-C	XA18 PIN 1	J2 PIN k
	114	MWC24(7)U98	2-22	7-C	XA18 PIN 21	J2 PIN m
	115	LWC26(7)U90	2-B	8-C	XA18 PIN B	J8 PIN f
	116	↕	2-P	8-C	XA18 PIN P	J8 PIN g
	117	LWC26(7)U3	2-L	8-C	XA18 PIN L	J8 PIN h

REQ	ITEM	PART NUMBER	BREAKOUT		DESTINATION OR DESCRIPTION	
			FROM	TO	FROM	TO
	118	LWC26(7)04	2-F	8-C	XA18 PIN F	J8 PIN J
	119	↕ 97 ↕ LWC26(7)00	2-N	8-C	XA18 PIN N	J8 PIN K
	120	MWC24(7)098	1-1	7-C	XA19 PIN I	J2 PIN N
	121	LWC26(7)090	1-22	7-C	XA19 PIN 21	J2 PIN P
	122	↕ 2 ↕ LWC26(7)090	1-B	8-D	XA19 PIN B	J8 PIN M
	123	↕ 3 ↕ LWC26(7)090	1-P	8-D	XA19 PIN P	J8 PIN N
	124	↕ 4 ↕ LWC26(7)090	1-L	8-D	XA19 PIN L	J8 PIN P
	125	↕ 97 ↕ LWC26(7)090	1-F	8-D	XA19 PIN F	J8 PIN R
	126	CD101-1MW	1-N	8-D	XA19 PIN N	J8 PIN S
	127	BS100	4-B	8-A	XA16 PIN B	J8 PIN Z
	128	LA101			CORD, NYLON CACING	
	129	MS3102A28-21S			SOLDER, TIN ALLOY	
/3	130	MS3102A28-21P			BAND, MARKER, CBL	
1	131	PX100-1-106			CONN., RECP, FML 37/C	J2
1	132				CONN., RECP, ML 37/C	J8
1	133				INS., SLVG, BLK.	