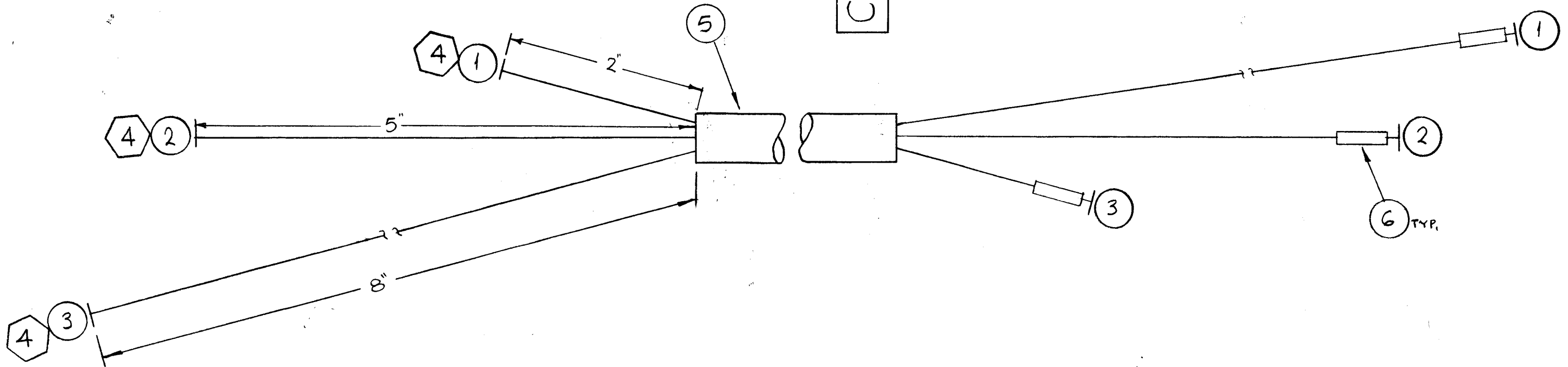


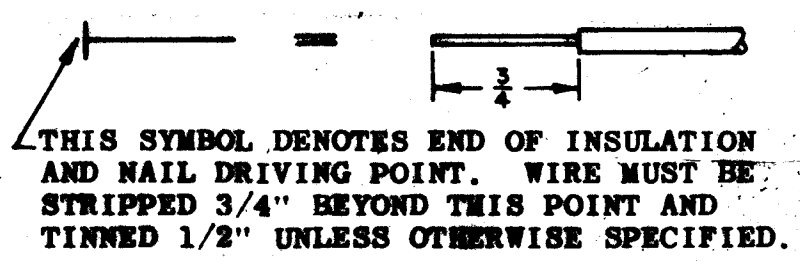
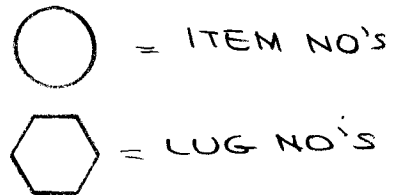
CA1195

REVISIONS

SYM	DESCRIPTION	DATE	E.M.N. NO.	DRAFT	CHKD	APPD
Ø	ORIGINAL RELEASE FOR PRODUCTION	3-14-66	Ø	HLA		
A	IT 1 THRU 3 WERE 50", IT 5 WAS 40"	1-12-67	17671	WHW		



SYMBOL - DENOTES



NOTES

1	GPT-40K	
Q'TY./UNIT	MODEL USED ON	ASS'Y. NO.
SCALE	CODE	
	A	

THE CONTENTS OF THIS DRAWING ARE THE EXCLUSIVE PROPERTY OF THE TECHNICAL MATERIEL CORP. ITS UNAUTHORIZED USE OR REPRODUCTION IN WHOLE OR IN PART IS STRICTLY FORBIDDEN.

REQ'D.	ITEM	PART NUMBER	DESCRIPTION	SYMBOL
X	7	BS100	SOLDER, TIN ALLOY	
1/2"	6	PX 830-500-3	INS. SLUG, SHRINK	
50"	5	PX100-1-1.250	INS. SLUG, ELECT.	
3	4	TE 197-0-50	TERM. LUG INS.	
60"	3	WI 137-1	WIRE, ELECT, INS. HV.	
60"	2	WI 137-1	WIRE, ELECT, INS. HV.	
60"	1	WI 137-1	WIRE, ELECT, INS. HV.	

F. BUDETTI LIST OF MATERIAL

MATERIAL

FINISH

UNLESS OTHERWISE SPECIFIED DIMENSIONS ARE IN INCHES AND INCLUDE CHEMICALLY APPLIED OR PLATED FINISHES

DECIMALS .X ± .05 .XX ± .01 .XXX ± .005

FRACTIONS ± 1/64 ANGLES ± 0° 30'

TOLERANCES

THE TECHNICAL MATERIEL CORP. MAMARONECK, NEW YORK

CABLE, ASSY, ELECTRICAL

DRAWN

CHECKED

ELECT. DES.

MECH. DES.

DATE 11-22-65

DATE 3-14-66

DATE 3-14-66

FINAL APPROVAL

DATE 3/14/66

CA1195

A

SHEET

REV. LTR.