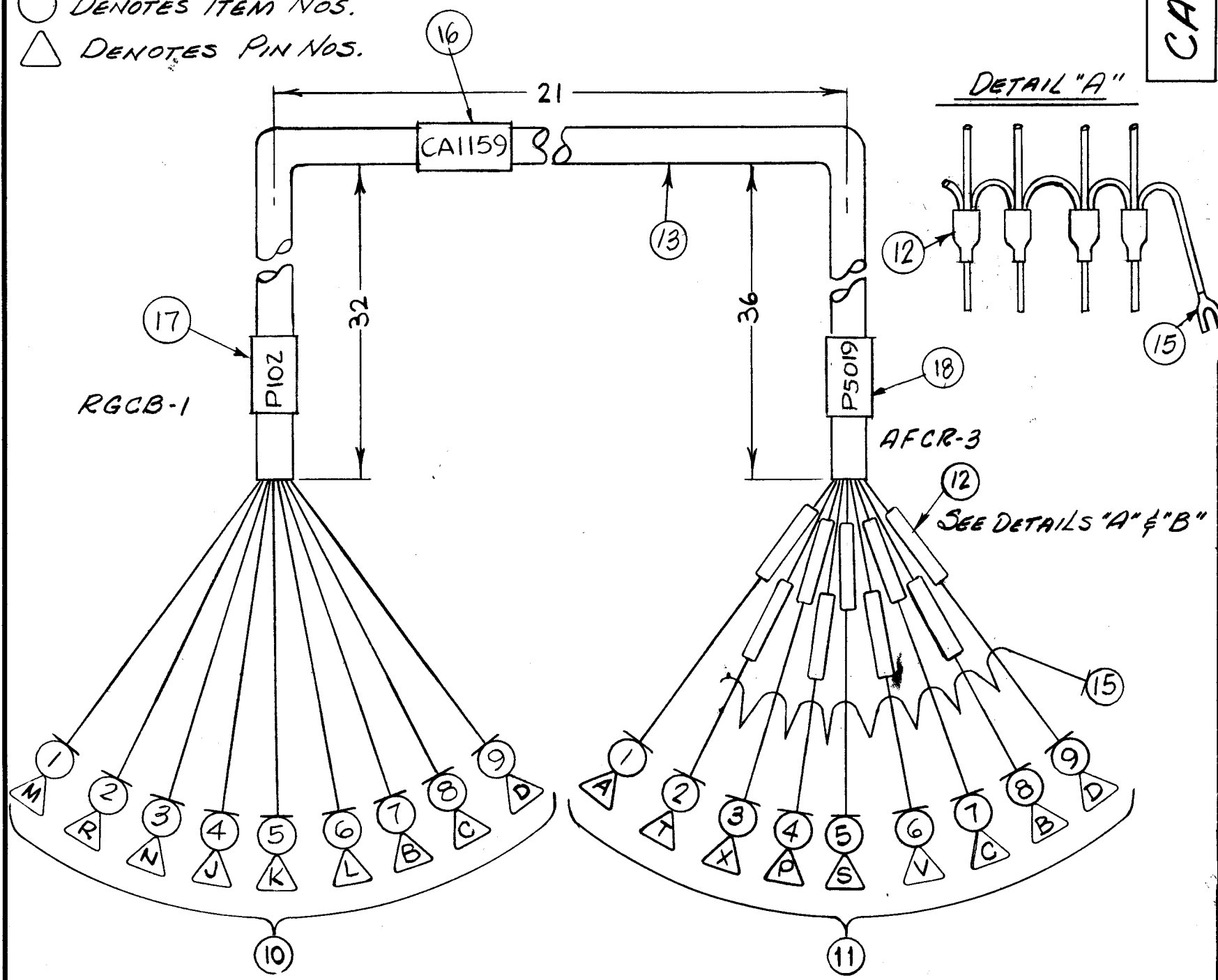


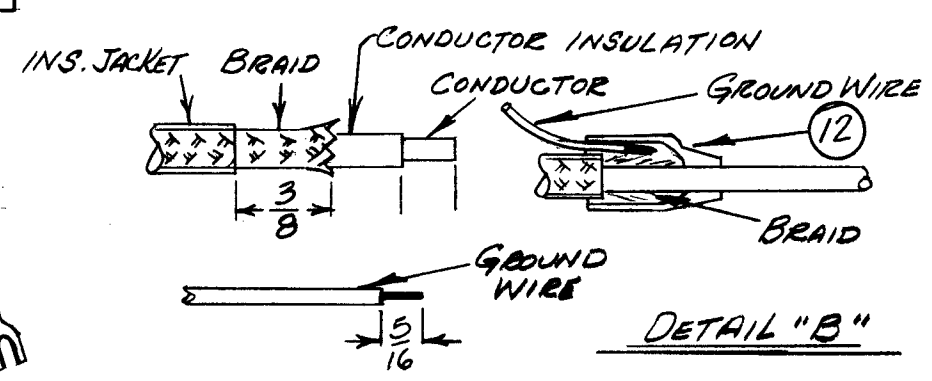
THIS SYMBOL DENOTES END OF INSULATION AND NAIL DRIVING POINT. WIRE MUST BE STRIPPED 3/4" BEYOND THIS POINT AND TINNED 1/2" UNLESS OTHERWISE SPECIFIED.

○ DENOTES ITEM NOS.
 △ DENOTES PIN NOS.



CA1159

REVISIONS					
SYM	DESCRIPTION	DATE	E.M.N. NO.	DRAFT	CHKD APPD
X1	ITEMS 16, 17, 18 ADDED	7-23-65	X1	G.D.C.	
Ø	ORIGINAL RELEASE FOR PRODUCTION	7/14/65	Ø	H.V.F.	



1	18	LA107-23-P5019	SLEEVE, MARKER CABLE, SPLIT	
1	17	LA107-23-P102	SLEEVE, MARKER CABLE, SPLIT	
1	16	LA107-23-CA1159	SLEEVE, MARKER CABLE, SPLIT	
1	15	TE120-2	TERM., LUG-SPADE	
X	14	B5100	SOLDER, SOFT, TIN ALLOY	
X	13	PX100-1-438	INSULATION, SLEEVING	
9	12	CU159-1	FERRULE, INS, COAX. CBLE	
1	11	PL212-4	CONNECTOR, PLUG, FEMALE	
1	10	PL212-1	CONNECTOR, PLUG, MALE	
9		MWC20(7)SJB	CABLE, SP, SHLD/JKT	
8				
7				
6				
5				
4				
3				
2		MWC20(7)S1	CABLE, SP, SHLD/JKT	
1		MWC20(7)UO	WIRE, ELEC, INSULATED	

REQ'D.	ITEM	PART NUMBER	DESCRIPTION	SYMBOL
EATON LIST OF MATERIAL				
MATERIAL			THE TECHNICAL MATERIEL CORP. MAMARONECK, NEW YORK	
FINISH			CABLE, ASS'Y. S/P	
UNLESS OTHERWISE SPECIFIED DIMENSIONS ARE IN INCHES AND INCLUDE CHEMICALLY APPLIED OR PLATED FINISHES			DRAWN H. AUSTIN CHECKED J.C.B. ELECT. DES. J.C.B. MECH. DES. J.C.B.	DATE 7-12-65 DATE 7-15-65 DATE DATE
DECIMALS .X ± .05 .XX ± .01 .XXX ± .005			FRACTIONS ± 1/64 ANGLES ± 0° 30'	FINAL APPROVAL DATE 10/13/65 SHEET REV. LTR.

NOTES

Q'TY./UNIT		MODEL USED ON		ASS'Y. NO.
		DDR-5BR		
SCALE		CODE		
THE CONTENTS OF THIS DRAWING ARE THE EXCLUSIVE PROPERTY OF THE TECHNICAL MATERIEL CORP. ITS UNAUTHORIZED USE OR REPRODUCTION IN WHOLE OR IN PART IS STRICTLY FORBIDDEN.				