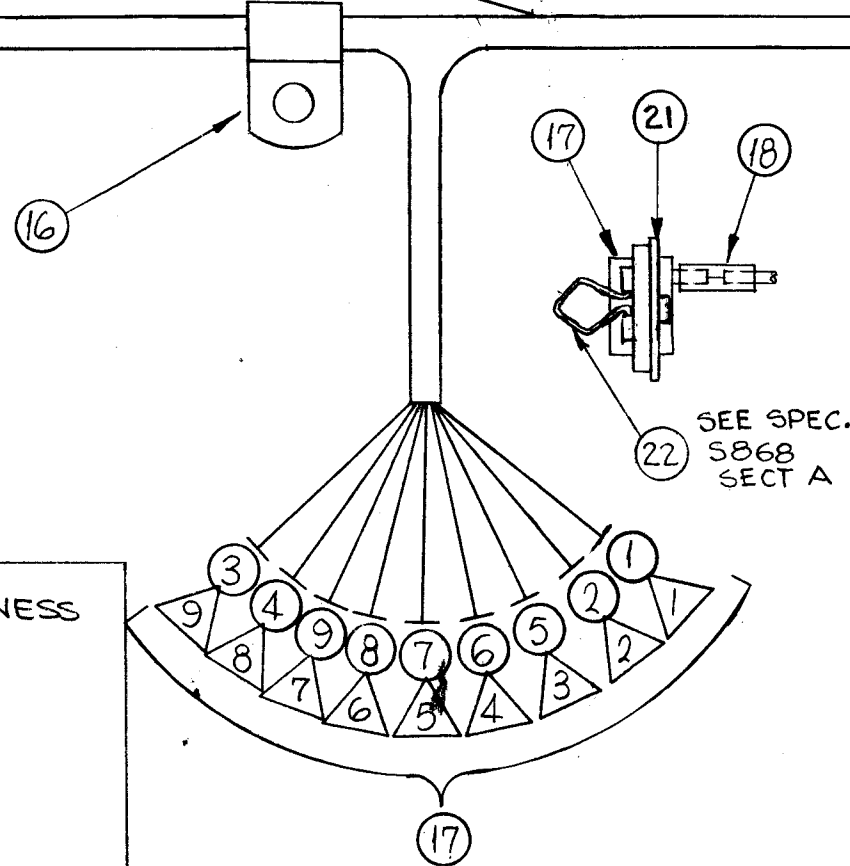
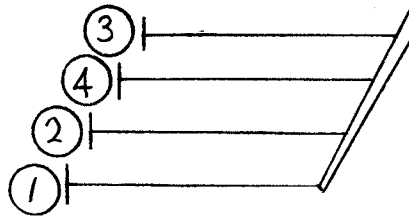
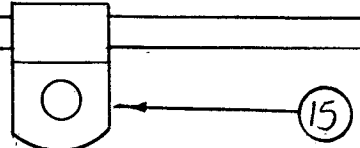
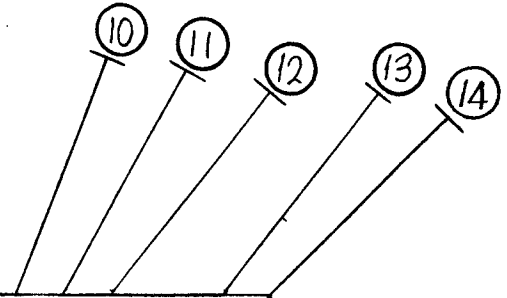
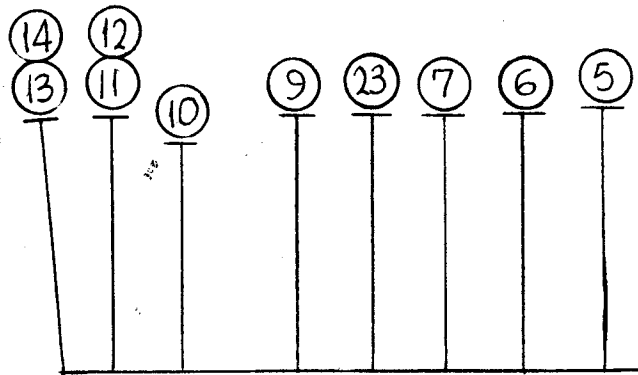


CA1131

REVISIONS

SYM	DESCRIPTION	DATE	E.M.N. NO.	DRAFT	CHKD	APPD
X1	ITEM 21 ADDED	6-11-65	X1	G.D.L	CA	
X2	ITEM 22 ADDED	6-28-65	X2	G.D.L		
X3	ITEM 17 WAS JJ313-4	7-7-65	X3	G.D.L	CA	
X4	FROM TO, REVISED, IT. 23 ADDED, 8 RE LOCATED, IT. 10-14 COLOR REV IT. 5-9 WER LWC 26,	8-2-65	X4			
Ø	ORIGINAL RELEASE FOR PRODUCTION	3-14-66	Ø	H.L.A		

THIS SYMBOL DENOTES END OF INSULATION AND NAIL DRIVING POINT. WIRE MUST BE STRIPPED 3/4" BEYOND THIS POINT AND TINNED 1/2" UNLESS OTHERWISE SPECIFIED.

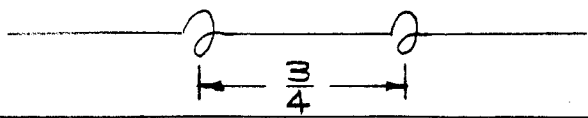


	23	LWC 22(7)U4	L926 OR L940	C937 OR C938
1	22	FS 125-1	RETAINER, CONNECTOR	
1	21	MS 4518-1	PLATE, MTG CONNECTOR	
X	20	BS100	SOLDER TIN ALLOY	
X	19	CD101-1MW	CORD LACING	
X	18	PX830-16-1	SHRINK TUBING	
1	17	JJ310-4	PLUG, CONNECTOR	
1	16	CU102-2	CLAMP LOOP	
1	15	CU102-1	CLAMP LOOP	
	14	LWC26(7)U93	L930 or L944	TERM. #1
	13	U95	L931 or L945	#2
	12	U7	L932 or L946	#3
	11	U90	L933 or L947	#4
	10	LWC26(7)U97	L934 or L948	TERM. #5
	9	MWC22(7)U9	L927 or L941	J908 OR J909 PIN 7
	8	U94	C937 or C938	6
	7	U0	L925 or L939	5
	6	U5	L924 or L938	4
	5	MWC22(7)U2	L923 or L937	3
	4	LWC26(7)U8	L928 or L942	8
	3	U3	L929 or L943	9
	2	U6	L922 or L936	2
	1	LWC26(7)U1	L921 or L935	J908 OR J909 PIN 1

ALL WIRES SHOULD BE PLACED IN HARNESS AS THEY APPEAR IN ITEM COLUMN BY CATEGORY.

- 1~ ALL RF CABLES
- 2~ ALL SHIELDED CABLES
- 3~ ALL OTHERS

SPACE LACING APPROX. 3/4" APART.



SYMBOL - DENOTES  
 ○ = ITEM NO'S  
 △ = PIN NO'S

NOTES

1	TST ( ) 10K	
1	TST ( ) 10K	
Q'TY./UNIT	MODEL USED ON	ASS'Y. NO.
SCALE 1:1	CODE A	

THE CONTENTS OF THIS DRAWING ARE THE EXCLUSIVE PROPERTY OF THE TECHNICAL MATERIEL CORP. ITS UNAUTHORIZED USE OR REPRODUCTION IN WHOLE OR IN PART IS STRICTLY FORBIDDEN.

REQ'D. ITEM PART NUMBER		FROM	TO
F. BUDETTI LIST OF MATERIAL			
MATERIAL		THE TECHNICAL MATERIEL CORP. MAMARONECK, NEW YORK	
FINISH		TITLE CABLE, GEAR BOX	
UNLESS OTHERWISE SPECIFIED DIMENSIONS ARE IN INCHES AND INCLUDE CHEMICALLY APPLIED OR PLATED FINISHES		DRAWN <b>SRG</b> DATE 5-11-65 CHECKED <b>CB</b> DATE 3-2-66 ELECT. DES. <b>BA</b> DATE 3-14-66 MECH. DES. DATE	FINAL APPROVAL <b>[Signature]</b> DATE 3/14/66 CA1131 SHEET
DECIMALS .X ± .05 .XX ± .01 .XXX ± .005	TOLERANCES ± 1/64 ANGLES ± 0° 30'	REV. LTR.	REV. LTR.