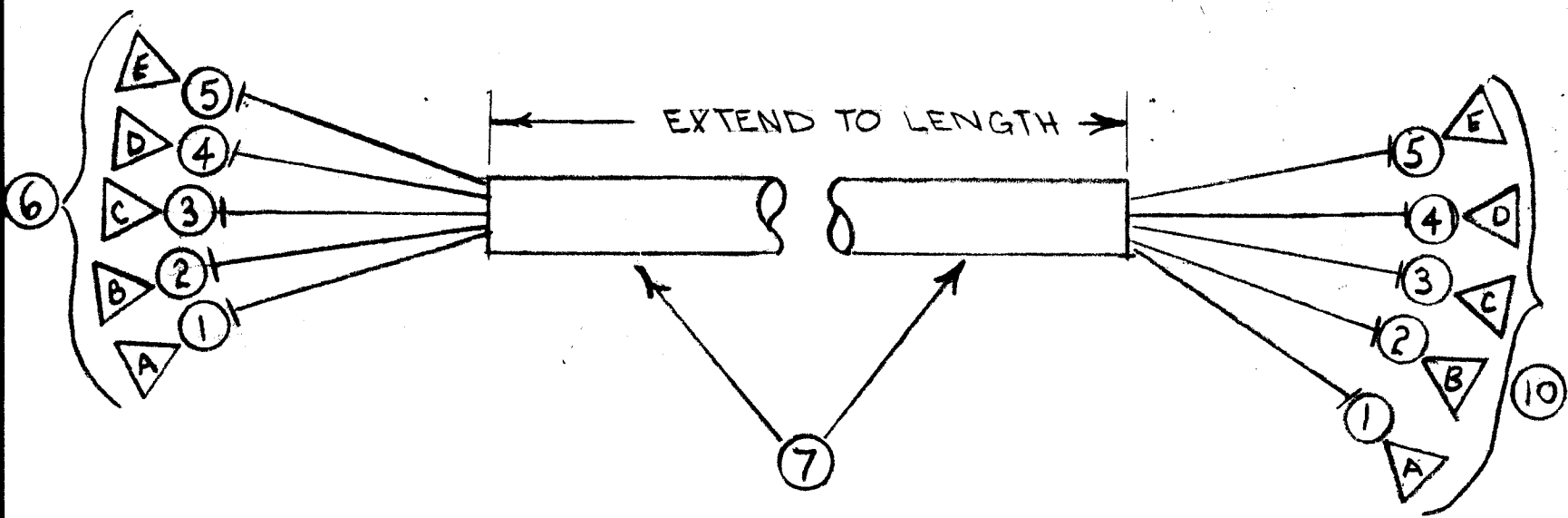


CA1093 B

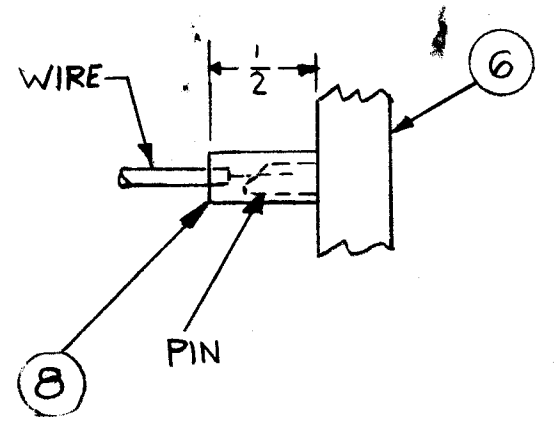
REVISIONS

SYM	DESCRIPTION	DATE	E.M.N. NO.	DRAFT	CHKD	APPD
Ø	ORIGINAL RELEASE FOR PRODUCTION	4/27	Ø	H/B		
A	IT. 8, 9, 10 ADDED, IT. 1 THRU 5 WAS WI-140-BN 22	5/14/65	14063	CVL	JL	JEP
B	IT. 6 WAS 1S IT. 10 WAS 1P	7/14/65	14499	X.V.V.	JEP	JEP



CA1093  
BASIC NO.

9.00  
LENGTH DESIRED  
EXPRESS IN INCHES TO  
TWO DECIMAL PLACES



REQ'D.	ITEM	PART NUMBER	DESCRIPTION	SYMBOL
1	10	PL247-2P	CONNECTOR, PLUG MALE 11/C	
x	9	BS100	SOLDER, TIN ALY	
5	8	PX830-14-1	SLEEVING, INSULATION, SHANK	BLK
9	7	PX-100-1-133	SLEEVING, INSULATED	
1	6	PL247-2S	CONNECTOR, FEMALE 11/C	
	5	WI-140-B-22N-0	WIRE, ELEC., INS. BLACK	
	4			BLUE
	3			GREEN
	2			YELLOW
	1	WI-140-B-22N-3	WIRE, ELEC., INS. ORANGE	

EATON (EBERT) LIST OF MATERIAL

MATERIAL: THE TECHNICAL MATERIEL CORP.  
MAMARONECK, NEW YORK

FINISH: WIRING, HARNESS, BRANCHED

UNLESS OTHERWISE SPECIFIED  
DIMENSIONS ARE IN INCHES AND INCLUDE  
CHEMICALLY APPLIED OR PLATED FINISHES

DECIMALS: .X ± .05, .XX ± .01, .XXX ± .005  
FRACTIONS: ± 1/64, ± 0° 30'

TOLERANCES

DRAWN: [Signature] DATE: 4/20/65  
CHECKED: [Signature] DATE: [Blank]  
ELECT. DES. DATE: 4-20-65  
MECH. DES. DATE: 4-20-65

FINAL APPROVAL: [Signature] DATE: 4/20/65

CA1093 B

SHEET: [Blank]

REV. LTR. [Blank]

1	HAER-1	
QTY./UNIT	MODEL USED ON	ASS'Y. NO.
SCALE: A	CODE: A	

NOTES

THE CONTENTS OF THIS DRAWING ARE THE EXCLUSIVE PROPERTY OF THE TECHNICAL MATERIEL CORP. ITS UNAUTHORIZED USE OR REPRODUCTION IN WHOLE OR IN PART IS STRICTLY FORBIDDEN.