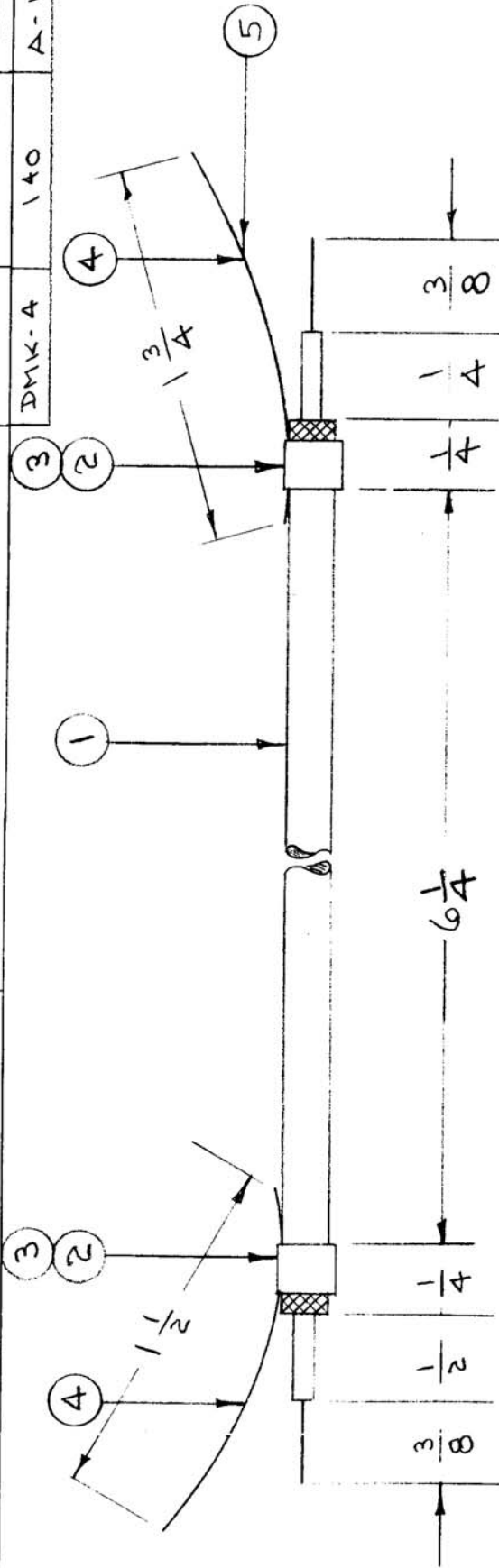


IF IT IS FOUND DESIRABLE TO CHANGE ANY TOLERANCE OR OTHER DETAIL SPECIFIED ON THIS DRAWING NOTIFY THE PURCHASER PROMPTLY.

MAXIMUM ALLOWABLE TOLERANCES HAVE BEEN DETERMINED AND DEVIATIONS WILL BE CAUSE FOR REJECTION. REMOVE ALL BURRS AND SHARP EDGES



USED ON

MODEL	PROJECT NO.	ASSY. NO.	DATE
DMK-4	140	A-155	5-28-53

CA-172 B

REQ. ITEM	PART NO.	DESCRIPTION	SYMBOL
1/4"	PX-10A-1-085	INSULATION, SLEEVING (BLK.)	
3/4"	WL-103-1	SHIELD, FLEXIBLE	
2	CU-101-4	FERRULE (OUTER)	
2	CU-101-3	FERRULE (INNER)	
8/4"	RG 59/U	CABLE	

THE TECHNICAL MATERIEL CORP. MAMARONECK, NEW YORK	
SWITCH CABLE ASS'Y	
IFO	
C.D.D. 5/28/53	
DRAWN H.A.P.	ELEC. DES. APP.
CHECKED	MECH. DES. APP.
FINAL APPROVAL	
CA-172 B	

B 2	6 1/4 WAS	6 3/4	7/8/54	2	WALDE	WALDE
A 1	IFO ADDED	CR-46	7/15/54	1	WALDE	WALDE
ISSUE ITEM	CHANGED FROM	DATE	CN. NO.	DRAFTS	CHECKER	ENG. APP.
TOLERANCES						
SCALE						
DRILL, PUNCH, COMMERCIAL STOCK SIZES AND MANUFACTURERS TOLERANCES ARE NOT INCLUDED.						
ALL DEC. DIM. ±						
OTHERS FRAC. DIM. ±						
ANGULAR DIM. ±						