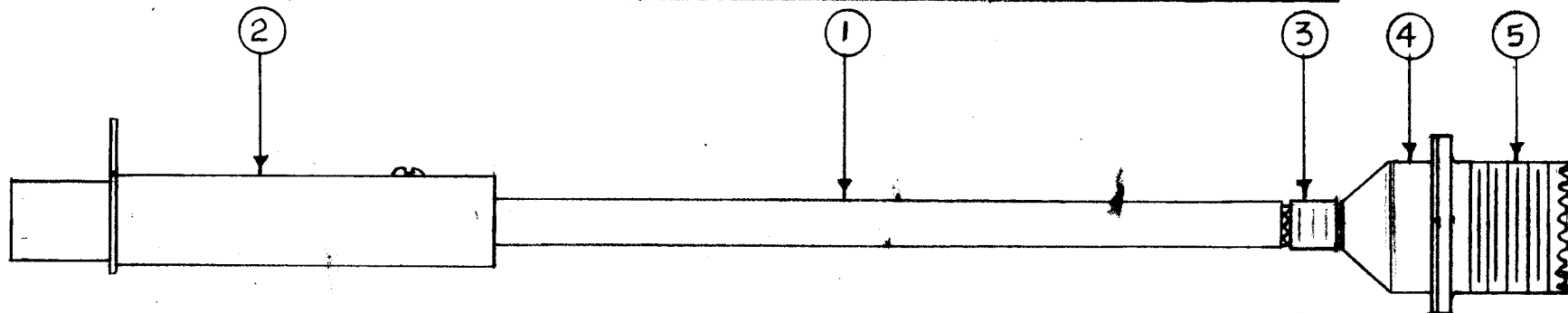
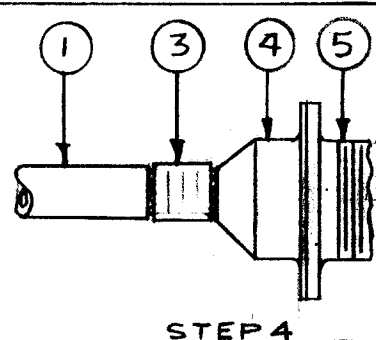
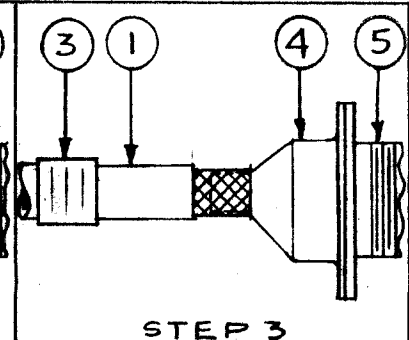
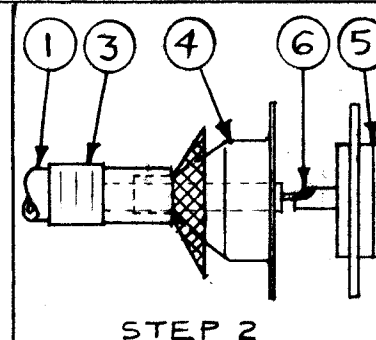
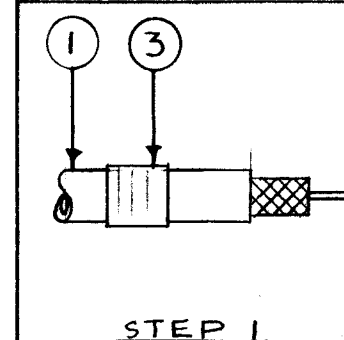
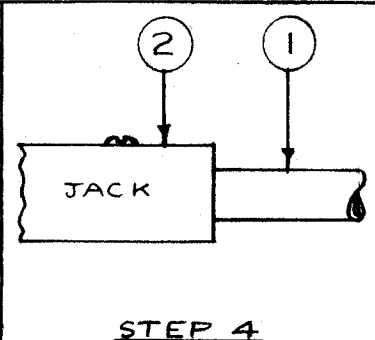
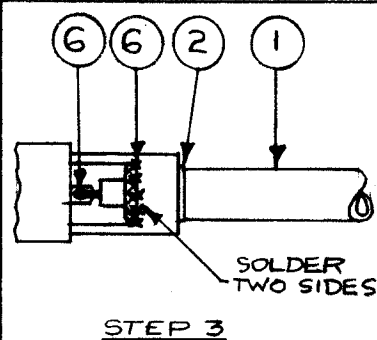
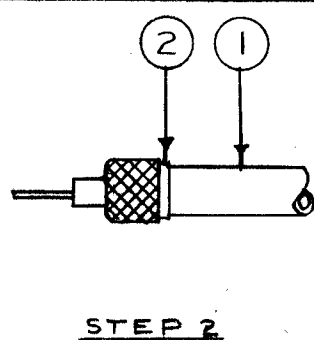
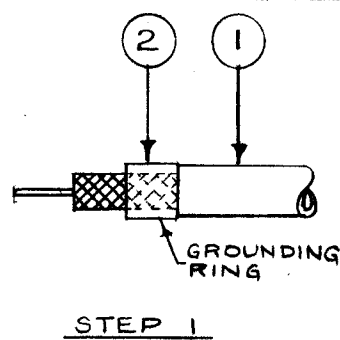
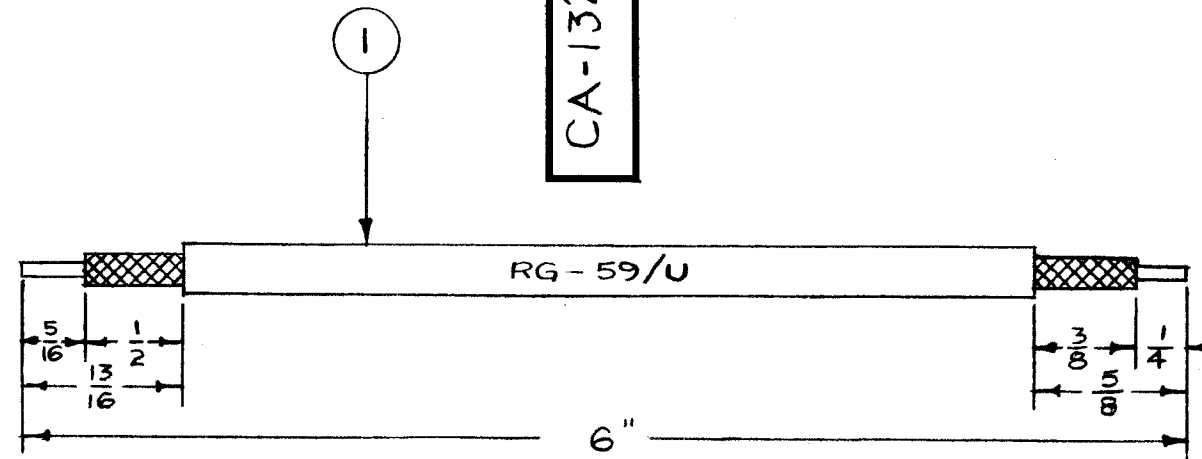


IF IT IS FOUND DESIRABLE TO CHANGE ANY TOLERANCE OR OTHER DETAIL SPECIFIED ON THIS DRAWING NOTIFY THE PURCHASER PROMPTLY.

MAXIMUM ALLOWABLE TOLERANCES HAVE BEEN DETERMINED AND DEVIATIONS WILL BE CAUSE FOR REJECTION. REMOVE ALL BURRS AND SHARP EDGES

CA-132 A



NOTICE TO PERSONS RECEIVING THIS DRAWING

THE TECHNICAL MATERIEL CORPORATION claims proprietary right in the material disclosed hereon. This drawing is issued in confidence for engineering information only and may not be reproduced or used to manufacture anything shown hereon without permission from THE TECHNICAL MATERIEL CORPORATION to the user. This drawing is loaned for mutual assistance and is subject to recall at any time.

Property of:

THE TECHNICAL MATERIEL CORPORATION
MAMARONECK, NEW YORK

X	6	BS-100	SOLDER, SOFT	
1	5	SO-239	RECEPTACLE	
1	4	UG-177/U	HOOD-RECEPTACLE	
1	3	CU-101-4	FERRULE, COAXIAL CABLE	
1	2	JJ-117	JACK, VIDEO	
6"	1	RG-59/U	CABLE, RF.	
REQ.	ITEM	PART NO.	DESCRIPTION	SYMBOL
//			THE TECHNICAL MATERIEL CORP.	
STOCK SIZE			MAMARONECK, NEW YORK	
//			CABLE, VIDEO JACK	
MATERIAL			WEIGHT PER PC.	
//			16 1/13/52	
TYPE & TEMPER			DRAWN	
//			ELEC. DES. APP.	
HEAT TREAT. SPEC.			MECH. DES. APP.	
//			CHECKED	
FINISH & SPEC. NO.			FINAL APPROVAL	
			M.H.S.	
			CA-132	
			A	

A	1	REDRAWN	1/15/52	1	16		
ISSUE	ITEM	CHANGED FROM	DATE	CN. NO.	DRAFTS	CHECKER	ENG. APP.
TOLERANCES			SCALE: //				
ALL OTHERS		DEC. DIM. ± FRAC. DIM. ± ANGULAR DIM. ±	DRILL, PUNCH, COMMERCIAL STOCK SIZES AND MANUFACTURERS TOLERANCES ARE NOT INCLUDED.				
EPP		162	A-251	11/14/52			
MODEL		PROJECT NO.	ASS'Y. NO.	DATE			
USED ON							