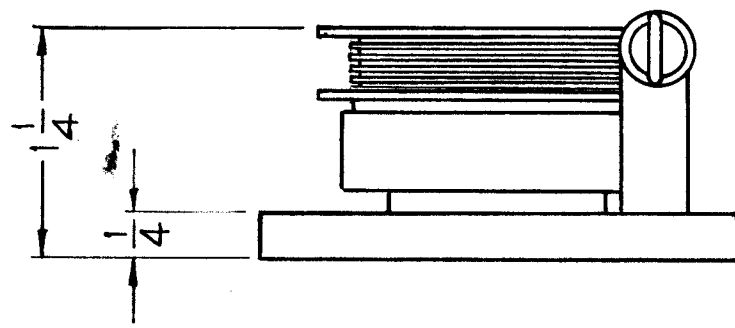
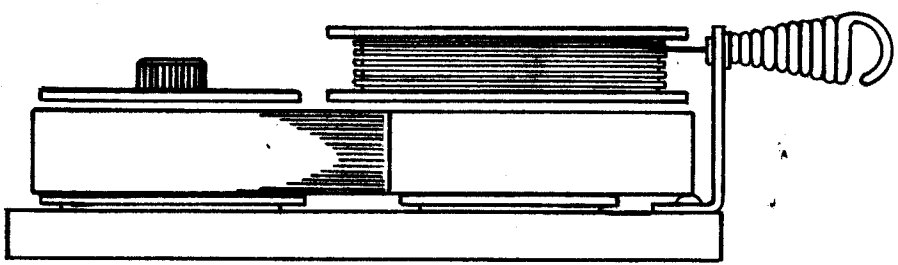
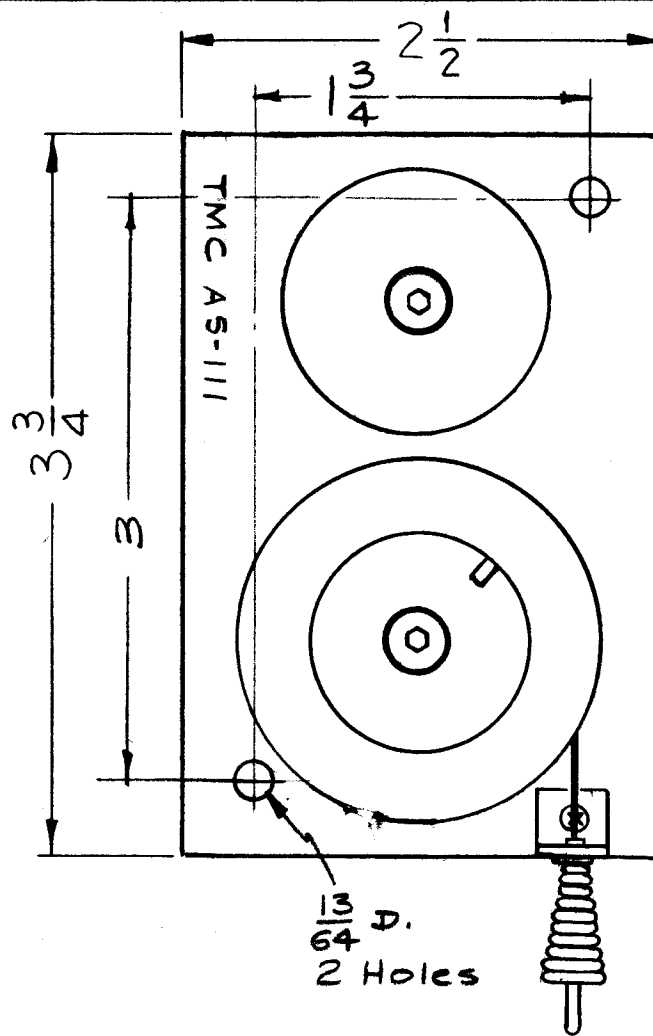


AS-111



TORQUE--.75 LB. /IN  
 CABLE LOAD--1 LB.  
 NO. OF ROTATIONS--12  
 CABLE LENGTH--72"  
 SPRING MATERIAL--STAINLESS STEEL  
 SPRING WIDTH--3/8"  
 SPRING THICKNESS--.005"  
 SPACE REQUIREMENTS--1-1/4" X 2-1/2" X 3-3/4"  
 BASE--1/4" THICK BLACK BAKELITE  
 ENDURANCE--(MIN. CYCLES)--7,500

ISSUE	ITEM	CHANGED FROM	DATE	CH. NO.	DRAFTS	CHECKER	ENG. APP.
TOLERANCES		SCALE:		NPL		2A1755	
DEC. DIM. ±		MAXIMUM ALLOWABLE TOLERANCES HAVE BEEN DETERMINED AND ANY DEVIATIONS WILL BE CAUSE FOR REJECTION: REMOVE ALL BURRS AND SHARP EDGES					
FRAC. DIM. ±							
ANGULAR DIM. ±							

1	AX-137	GPT-10K	9-8-59
REQ. PER UNIT	MODEL	PROJECT NO.	DATE
USED ON			

REQ. ITEM	PART NO.	DESCRIPTION	SYMBOL
		THE TECHNICAL MATERIEL CORP. MAMARONECK, NEW YORK	
STOCK SIZE		SPRING, RETRACTING	
MATERIAL			
TYPE & TEMPER		HEATTREAT. SPEC.	
DRAWN		CHECKED	FINAL APPROVAL
FINISH & SPEC. NO.		ELEC. DES. APP	MECH. DES. APP

J.C. Biele *JCB* *[Signature]*  
 AS-111