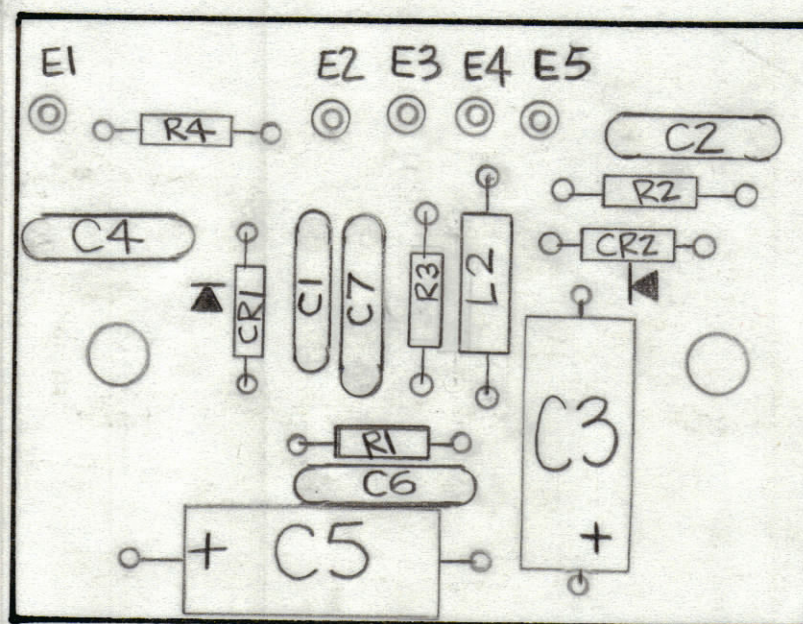


REVISIONS						
ZONE	LTR	DESCRIPTION	DATE	E.M.N.NO	DRAFT	CHKD APPD
	Ø	ORIGINAL RELEASE FOR PRODUCTION	5-13-77			W.B. *



CUT HERE GUARANTEED 11-73
ASSEMBLY NOTES

1. TO MOUNT COMPONENTS INSERT LEADS THROUGH HOLES.
2. CAUTION, WHEN APPLYING HEAT & SOLDER TO LEAD & FOIL.
3. CLEAN & INSPECT AS PER SPEC S676.
4. FOR ELECTRICAL COMPONENT PART NUMBERS REFER TO NPL A
5. USE SYMBOL NUMBERS FOR ASSY. REF.

(CK2132)
 Z103

QTY. REQ.	ITEM	PART NO.	DESCRIPTION	SYMBOL
X	Z	BS100	SOLDER TIN ALLOY	
1	1	PC750	PRINTED CIRCUIT BD	

LIST OF MATERIAL

UNLESS OTHERWISE SPECIFIED DIMENSIONS ARE IN INCHES AND INCLUDE CHEMICALLY APPLIED OR PLATED FINISHES	FINAL APPROVAL <i>[Signature]</i>	DATE 3/11/77
TOLERANCES ON DECIMALS .X ± .05 .XX ± .01 .XXX ± .005 FRACTIONS ± 1/64 ANGLES ± 0° -30'	MECH. DES. <i>[Signature]</i>	DATE
	ELECT. DES.	DATE
	CHECKED	DATE
	DRAWN <i>[Signature]</i>	DATE

THE TECHNICAL MATERIEL CORP. MAMARONECK, NEW YORK			
ASSY, ALDC			
SIZE	CODE IDENT.NO.	DWG NO.	ISSUE
C	82679	A5648	Ø
SCALE	SHEET		OF

1	TMAIKC	
QTY / UNIT	MODEL USED ON	ASS'Y NO.
APPLICATION		
CODE		
NOTICE TO PERSONS RECEIVING THIS DRAWING THE TECHNICAL MATERIEL CORPORATION claims proprietary right in the material disclosed hereon. This drawing is issued in confidence for engineering information only and may not be reproduced or used to manufacture anything shown hereon without permission from THE TECHNICAL MATERIEL CORPORATION to the user. This drawing is loaned for mutual assistance and is subject to recall at any time.		
MATERIAL		
FINISH		

A5648