

5

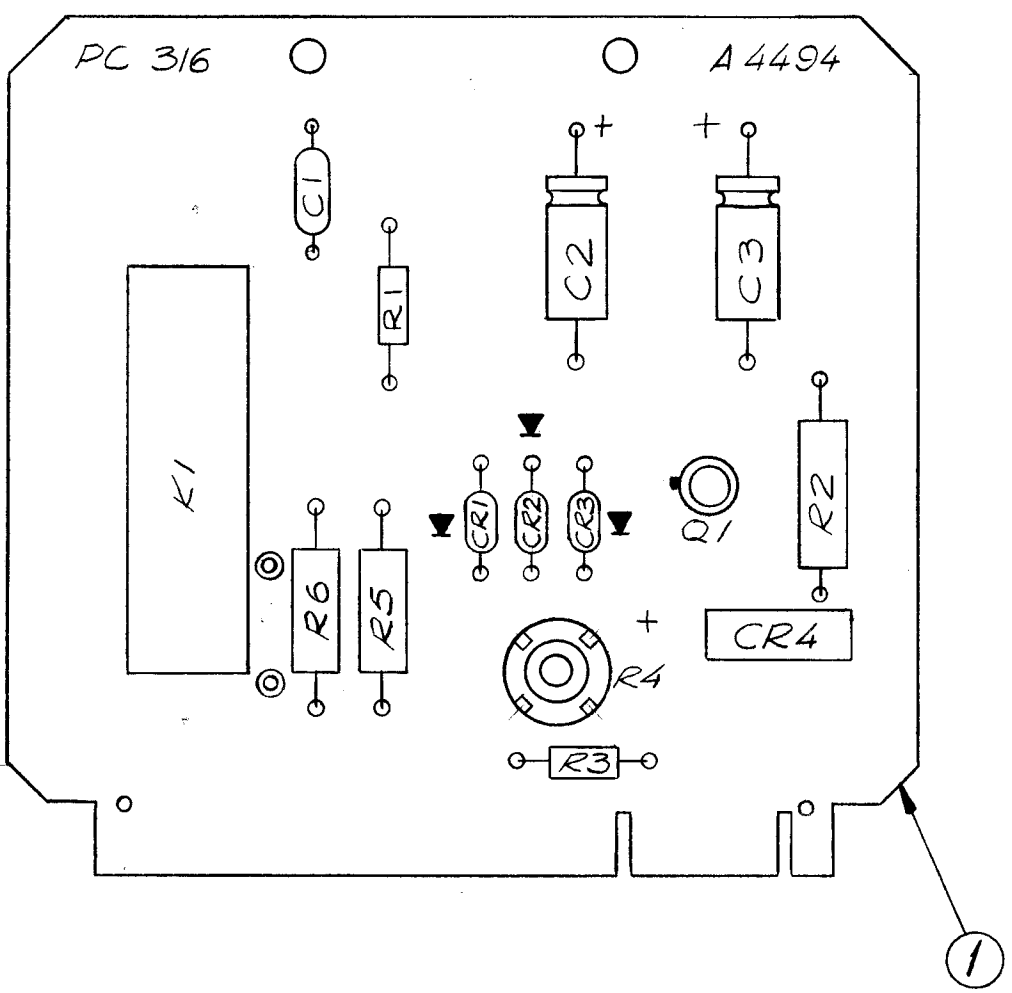
4

3

2

1

REVISIONS						
ZONE	LTR	DESCRIPTION	DATE	E.M.N.NO	DRAFT	CHKD APPD
	X	EXP RELEASE	6/25/69		GE	
	Ø	ORIGINAL RELEASE FOR PRODUCTION	8/12/69			



ASSEMBLY NOTES

1. TO MOUNT COMPONENTS INSERT LEAD THROUGH PLATED THRU-HOLES.
2. CAUTION: WHEN APPLYING HEAT AND SOLDER TO LEAD AND FOIL
3. CLEAN AND INSPECT AS PER TMC SPEC 5676.
4. FOR ELECTRICAL COMPONENT PART NUMBERS REFER TO NPL A4494
5. USE SYMBOL NUMBERS FOR ASSEMBLY REFERENCE.

8076
5-12

REQ'D	ITEM	PART NUMBER	DESCRIPTION	SYM.
X	2	BS 100	SOLDER, TIN	
1	1	PC 316	PRINTED CIRCUIT BOARD	

LIST OF MATERIAL

QTY / UNIT	MODEL USED ON	ASS'Y NO.
	RTIH-3,4	
APPLICATION		
CODE	S401-451	
A		

NOTICE TO PERSONS RECEIVING THIS DRAWING
 THE TECHNICAL MATERIEL CORPORATION claims proprietary right in the material disclosed hereon. This drawing is issued in confidence for engineering information only and may not be reproduced or used to manufacture anything shown hereon without permission from THE TECHNICAL MATERIEL CORPORATION to the user. This drawing is loaned for mutual assistance and is subject to recall at any time.

UNLESS OTHERWISE SPECIFIED DIMENSIONS ARE IN INCHES AND INCLUDE CHEMICALLY APPLIED OR PLATED FINISHES

DECIMALS: .X ± .05, .XX ± .01, .XXX ± .005
 FRACTIONS: 1/64
 TOLS. ANGLS: 0° -30'

MATERIAL
FINISH

FINAL APPROVAL: *S. De Marco* DATE: 8-11-69
 MECH. DES.: *R. Uzzo* DATE: 8-7-69
 ELECT. DES.:
 CHECKED: *[Signature]* DATE: 8/11/69
 DRAWN: *G. FANGEIST* DATE: 6/25/69

THE TECHNICAL MATERIEL CORP.
 MAMARONECK, NEW YORK

PC 316 ASSY. KEYS

SIZE	CODE IDENT. NO.	DWG NO.	ISSUE
B	82679	A 4494	Ø
SCALE	SHEET		OF
	1		