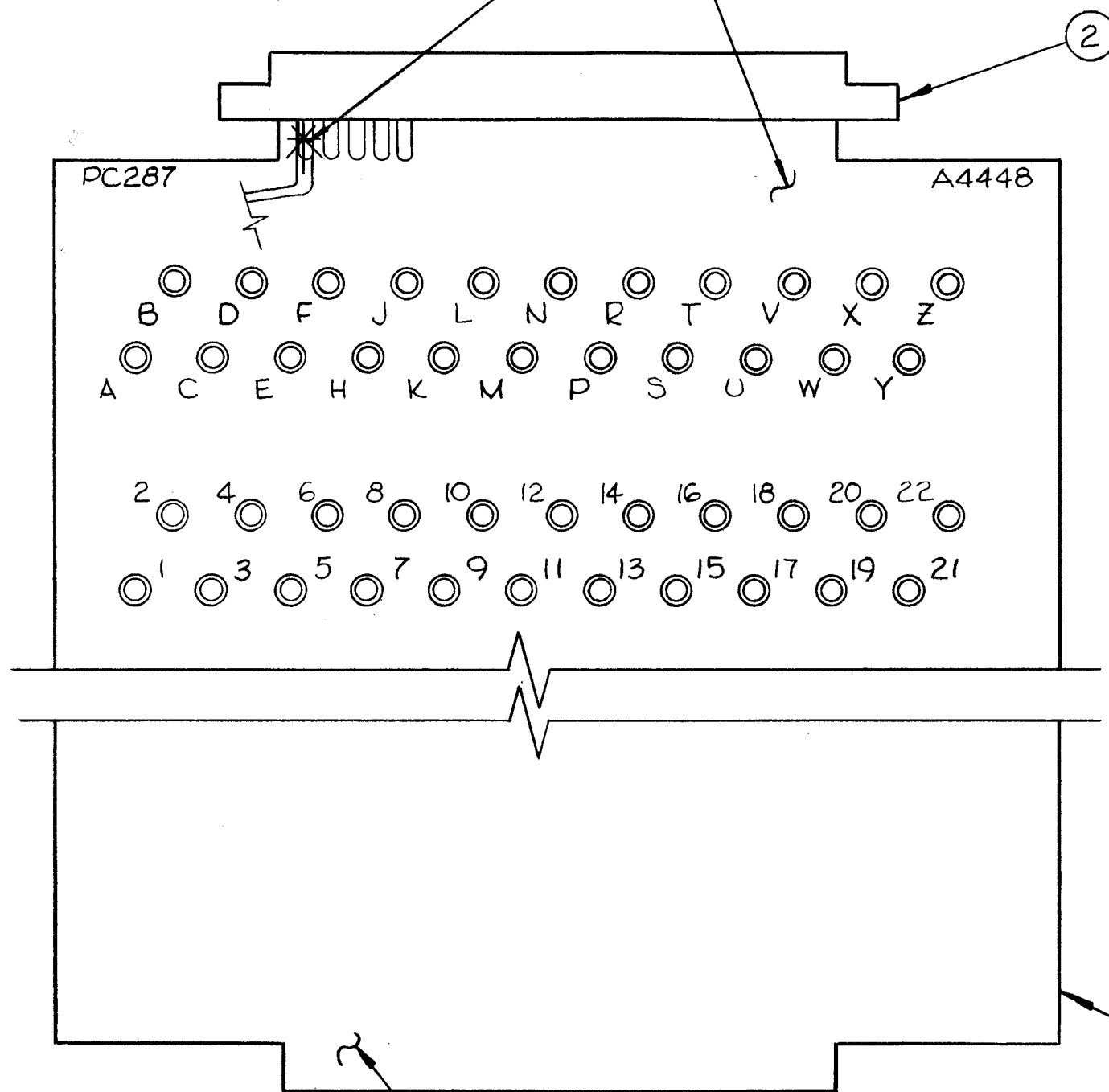


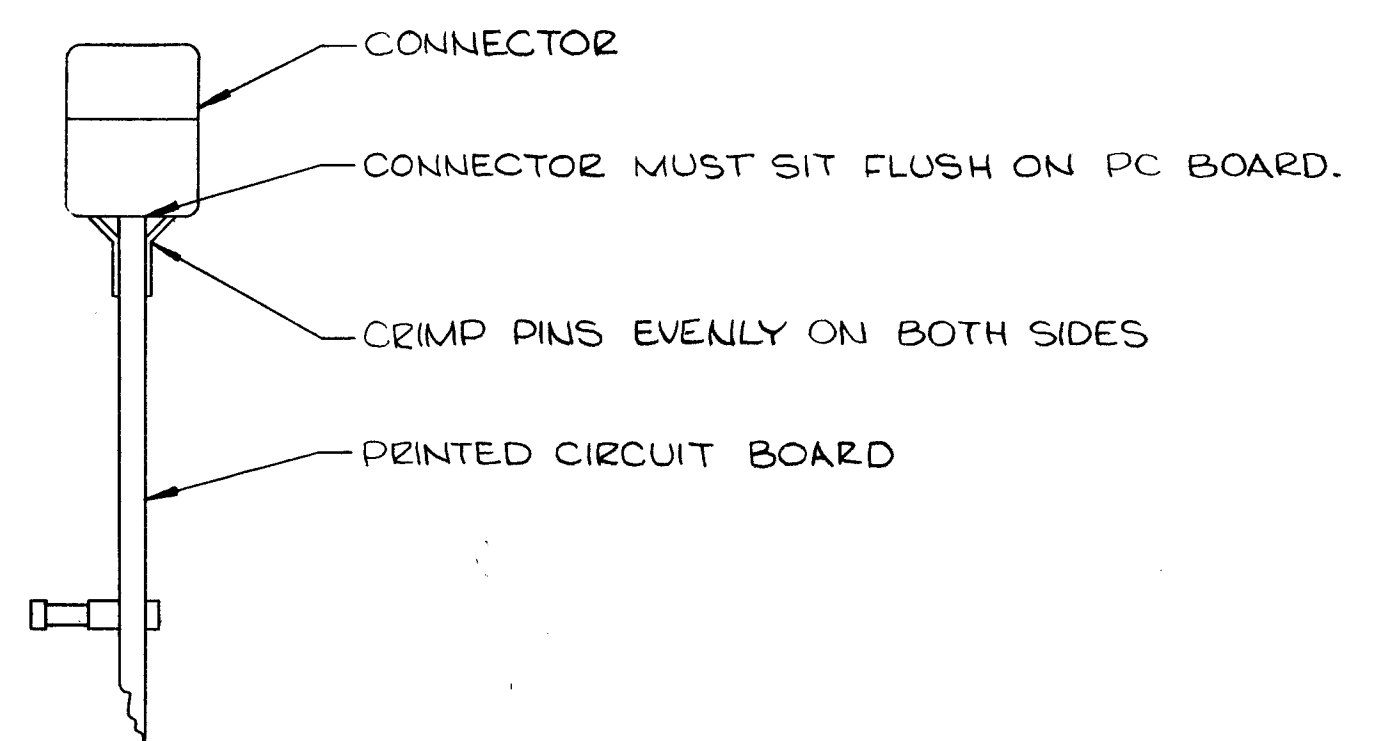
SOLDER AS SHOWN, BOTH SIDES TYPICAL ALL PINS

PINS WITH No'S MOUNT ON THIS SIDE OF PC BD



A4448

REVISIONS						
SYM	DESCRIPTION	DATE	E.M.N. NO.	DRAFT	CHKD	APPD
Ø	ORIGINAL RELEASE FOR PRODUCTION	7-13-66	Ø	G.D.L.		



CONNECTOR MTG DETAIL (SIDE VIEW)

COMPONENT SIDE

NOTES

	RTIH-1	
	LSCA-1	
	LRCA-1	
Q'TY./UNIT	MODEL USED ON	ASS'Y. NO.
SCALE 1/1	CODE	
THE CONTENTS OF THIS DRAWING ARE THE EXCLUSIVE PROPERTY OF THE TECHNICAL MATERIEL CORP. ITS UNAUTHORIZED USE OR REPRODUCTION IN WHOLE OR IN PART IS STRICTLY FORBIDDEN.		

REQ'D.	ITEM	PART NUMBER	DESCRIPTION	SYMBOL
	3	BS100	SOLDER, TIN ALLOY	
	1	2	JJ319-22DFE	CONNECTOR, RECPAGE
	1	1	PC287	PRINTED CIRCUIT BOARD

EATON		LIST OF MATERIAL	
MATERIAL	---	THE TECHNICAL MATERIEL CORP. MAMARONECK, NEW YORK	
FINISH	---	TITLE ASS'Y PRINTED CIRCUIT BD TEST CARD	
UNLESS OTHERWISE SPECIFIED DIMENSIONS ARE IN INCHES AND INCLUDE CHEMICALLY APPLIED OR PLATED FINISHES		DRAWN <i>WJW</i>	DATE 7-9-66
DECIMALS .X ± .05 .XX ± .01 .XXX ± .005		CHECKED <i>JCB</i>	DATE 7-13-66
FRACTIONS ± 1/64 ANGLES ± 0° 30'		ELECT. DES.	DATE
TOLERANCES		MECH. DES.	DATE
		FINAL APPROVAL <i>[Signature]</i>	
		DATE 7-13-66	
		SHEET A4448	
		REV. LTR. Ø	