

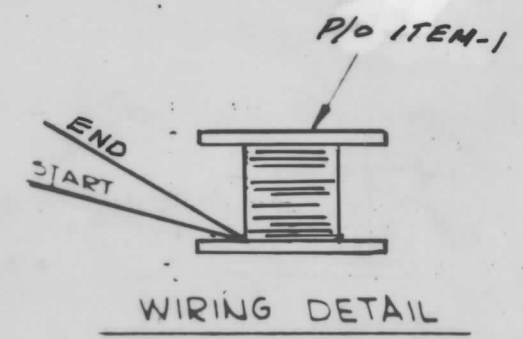
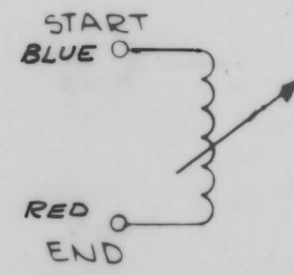
"Q" TEST FREQ.	"Q" MIN.	EXT. CAP. Q METER	NO. CODE	SYMBOL	INDUCTANCE
355 KC	70	2700 PF		L502	73UH + AND - 5UH

A 4424

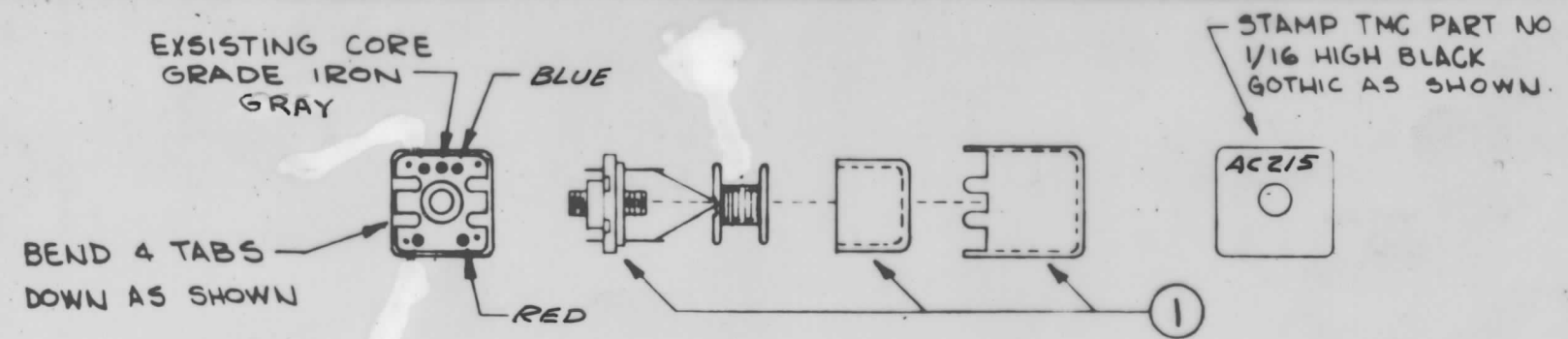
REVISIONS						
SYM	DESCRIPTION	DATE	EM N NO	DRAFT	CHKD	APPD
Ø	ORIGINAL RELEASE FOR PRODUCTION	2-16-66	Ø			<i>JL</i>

WINDING PROCEDURE

- WIND 72 TURNS OF ITEM 3 ON ITEM 2, STAKE WITH ITEM 4.
- BAKE COIL FOR 15 MIN. AT 150°F, REMOVE FROM OVEN AND COAT COIL WITH ITEM #5.
- COLOR CODE TERMINALS ON BASE AS SHOWN.
- STRIP AND TIN LEADS TO WITHIN 1/4" OF COIL.
- PLACE ITEM #2 OVER SLUG ON BASE, TAKING CARE TO POSITION NOTCHES ON RAISED PART OF BASE.
- SOLDER ALL LEADS TO PROPER COLOR-CODED TERMINALS ON BASE.
- ASSEMBLE AS PER ASSEMBLY DRAWING, PLACE IN CASE; BEND THE 4 TABS DOWN IN THE NOTCHES.
- DO NOT CUT OFF THE TWO LONG TABS.
-
- STAMP TMC PART NO. AS SHOWN ABOVE.
- TEST INDUCTANCE, AND Q AS SHOWN ABOVE.
- BAKE COMPLETED ASSEMBLY FOR ONE HOUR AT 212°F.
- REMOVE COMPLETED ASSEMBLY FROM OVEN AND ALLOW TO COOL TO ROOM TEMPERATURE.
- REPEAT STEP NO. 13.
-
- TUNE THE CORE INTO THE COIL TO REACH THE INDUCTANCE AS SHOWN ABOVE.
- TEST COIL WITH "Q" METER 260A (FOR "Q" ONLY).
- SET THE TEST FREQUENCY AS SHOWN ABOVE. AND SET THE (MULTIPLY "Q" X) TO 1.
- TUNE THE INDUCTANCE DIAL. TO REACH THE MAX. READING ON THE "Q" METER.



SCHEMATIC DIAGRAM



REQ D	ITEM	PART NUMBER	DESCRIPTION	SYMBOL
X	6	BS-100	SOLDER, SOFT	
X	5	GL-130	ADHESIVE, Q-DOPE	
X	4	GL-103	ADHESIVE, N-CEL	
X	3	WI-104 7/41 SNQS	WIRE ELECTRICAL, LITZ	
	2			
1	1	CI-136-1	CORE, ADJUSTABLE TUNING	

POSE - LIST OF MATERIAL

MATERIAL	THE TECHNICAL MATERIEL CORP. MAMARONECK, NEW YORK			
FINISH	TITLE AC215 COIL, R.F., ADJUSTABLE			
UNLESS OTHERWISE SPECIFIED DIMENSIONS ARE IN INCHES AND INCLUDE CHEMICALLY APPLIED OR PLATED FINISHES		DRAWN JL	DATE 2-20-66	FINAL APPROVAL <i>[Signature]</i>
		CHECKED <i>[Signature]</i>	DATE 2-16-66	DATE 2/16/66
		ELECT DES <i>[Signature]</i>	DATE 2/16-66	A 4424
		MECH. DES.	DATE	Ø
		SHEET		REV LTR

NOTES

1	CON-3	A4352
QTY/UNIT	MODEL USED ON	ASSY NO
SCALE	CODE	
THE CONTENTS OF THIS DRAWING ARE THE EXCLUSIVE PROPERTY OF THE TECHNICAL MATERIEL CORP. ITS UNAUTHORIZED USE OR REPRODUCTION IN WHOLE OR IN PART IS STRICTLY FORBIDDEN.		

DECIMALS	FRACTIONS
I ± .05	± 1/64
II ± .01	ANGLES
III ± .005	± 0° 30'